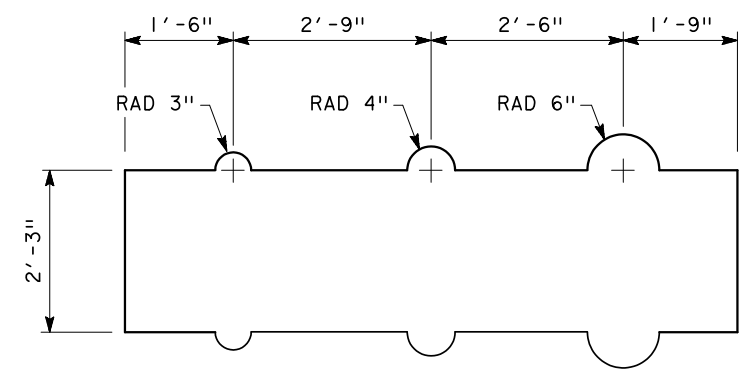


SECTION THRU EMBEDDED TRUSS



FORM LINER

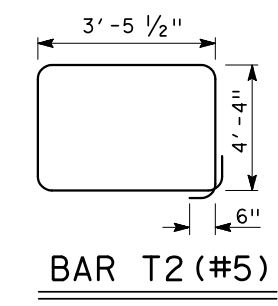
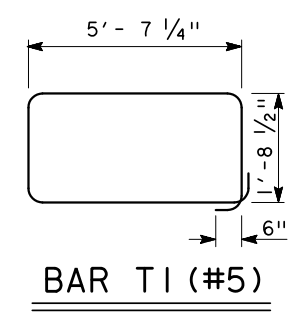
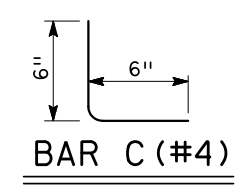
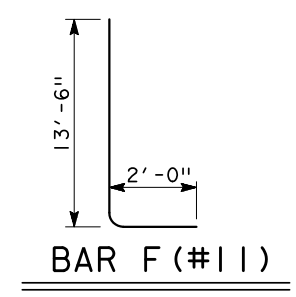


TABLE OF ESTIMATED COLUMN QUANTITIES (FOR ONE COLUMN) 4.5' x 4.5' TRUSS				
BARS	NO.	SIZE	LENGTH	WEIGHT
A	36	#11	29'-10"	5,548
C	55	#4	1'-0"	37
D	12	#11	12'-11"	824
D1	1	#4	29'-10"	20
D2	1	#4	24'-10"	17
F	36	#11	15'-6"	2,965
G	74	#4	3'-4 1/2"	167
K	6	#6	12'-11"	116
T1	74	#5	15'-7 1/2"	1,206
T2	27	#5	16'-7"	467
REINFORCING STEEL			LBS	11,200
TEMPORARY SPECIAL SHORING			SF	269
CL C CONC (SIGN FOOTING)			CY	9.8
CL C CONC (SIGN COLUMN)			CY	23.3
RIPRAP CONC (4 IN)			CY	1.0

① QUANTITIES SHOWN ARE BASED ON A SIGN COLUMN HEIGHT OF 30'. FOR EACH LINEAR FOOT VARIATION IN HEIGHT MAKE THE FOLLOWING ADJUSTMENTS:

BARS A LENGTH, 1'-0"
 REINFORCING STEEL, 227 LB
 CL C CONC (SIGN COLUMN), 0.76 CY.



CANTILEVER OVERHEAD SIGN STRUCTURE DETAILS VERTICAL SCHEME

COSS-VS

FILE#	STDN41.DGN	DN#	HOU	CK#	HOU	DW#	HOU	CK#	HOU
©TXDOT	AUGUST 2011	DISTRICT	FED REG	PROJECT NO.		SHEET			
REVISIONS		HOUSTON	6	COUNTY		CONTROL	SECT	JOB	HIGHWAY