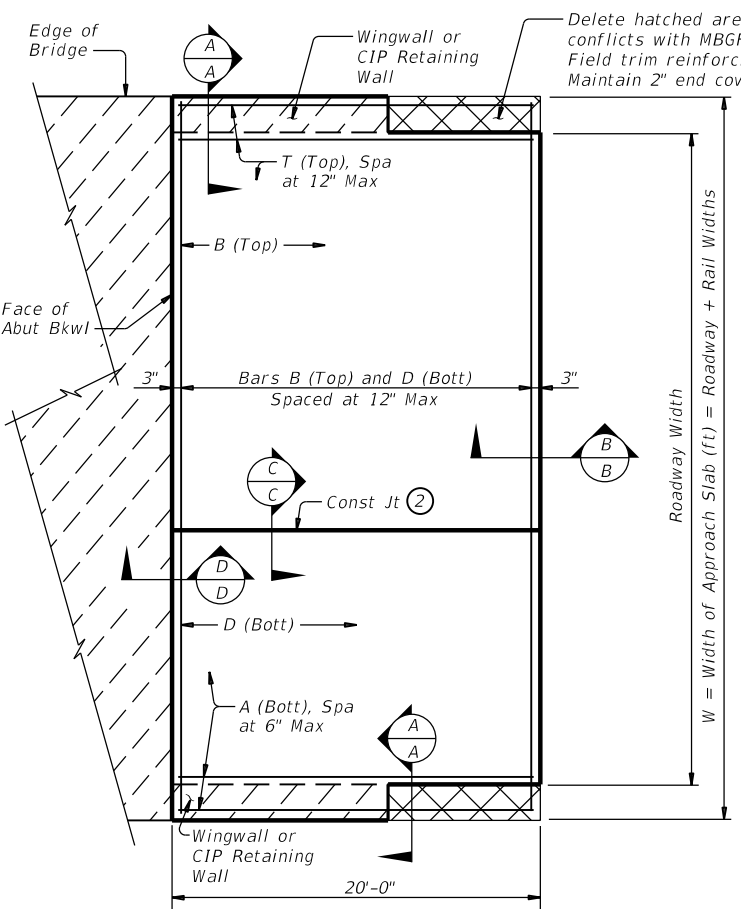
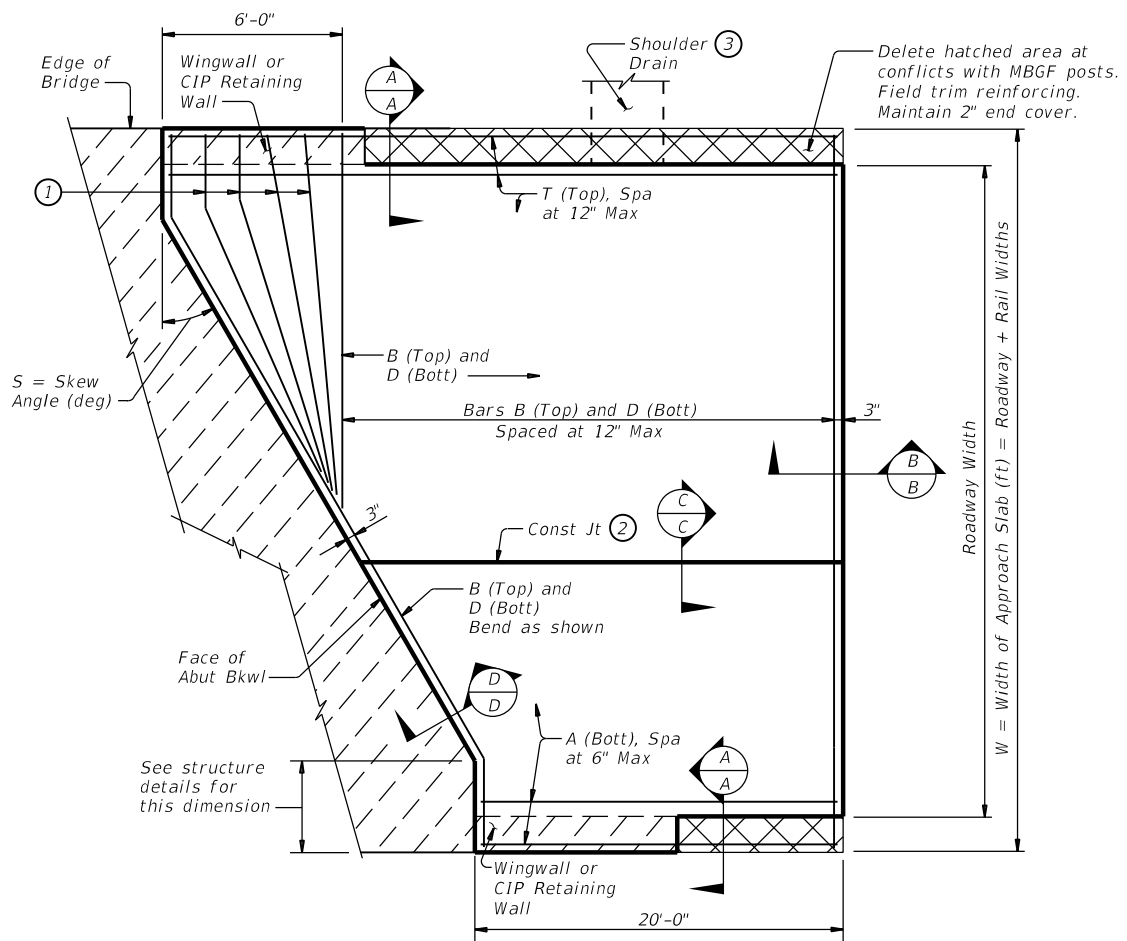


DISCLAIMER: The use of this standard is governed by the "Texas Engineering Practice Act". No warranty of any kind is made by TxDOT for any purpose whatsoever. TxDOT assumes no responsibility for the conversion of this standard to other formats or for incorrect results or damages resulting from its use.



**PLAN**  
(Showing Non-Skewed Approach Slab)



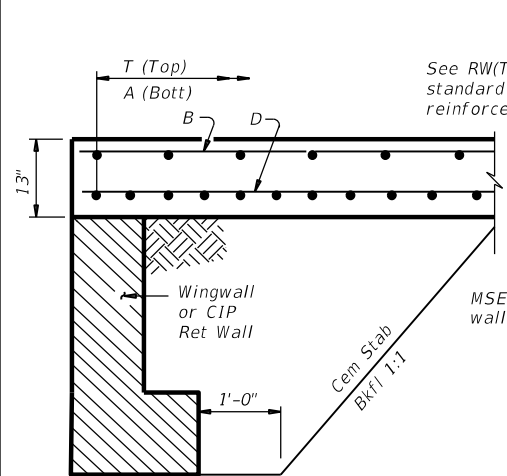
**PLAN**  
(Showing Skewed Approach Slab)

BAR TABLE	
BAR	SIZE
A	#8
B	#5
D	#5
T	#5

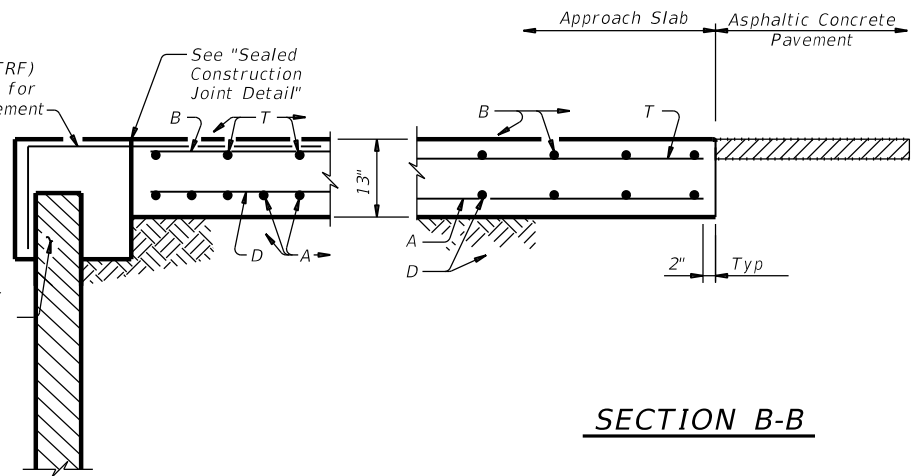
APPROXIMATE QUANTITIES ④	
Reinf steel weight = 8.5 Lbs/SF of Approach Slab	
Vol of Appr Slab Conc (CY) = 0.802W + 0.02W <sup>2</sup> Tan S (Includes Support Slab)	
W = Width of Approach Slab (ft) S = Skew Angle (deg)	

- ① Flare Bars B and D in this region (1'-6" Max Spa, 3" Min Spa). Minimum flared bar length = 2'-6". Bend bars as necessary.
- ② Provide longitudinal construction joints that align with longitudinal construction joints in the bridge slab with bridges built in stages. Other longitudinal construction joints must receive approval of the Engineer.
- ③ See details elsewhere in plans for shoulder drain location and details.
- ④ For Contractor's information only. Quantities are for one approach slab.
- ⑤ Multiple piece tie bars are acceptable at longitudinal construction joints provided minimum laps shown are achieved.
- ⑥ See details elsewhere in plans for required cross-slope.
- ⑦ Place in accordance with Item 438.

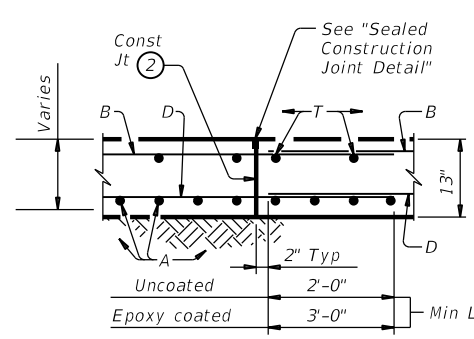
**GENERAL NOTES:**  
Construct approach slab in accordance with Item 422.  
Provide Class "S" concrete with a minimum compressive strength of 4,000 psi.  
Provide Grade 60 reinforcing steel.  
Provide longitudinal joints as shown on the "Longitudinal Saw Cut Joint Detail" at lane lines and shoulders when width between longitudinal construction joints or edges of approach slab exceeds 16 feet. Saw cut joints within 24 hours of concrete placement to a depth of 1 1/2" and seal in accordance with Item 438. Alternately, provide a controlled joint consisting of 1 1/2" vinyl or plastic joint former (Stress Cap, Zip Strip, Stress Lock, or equal as approved by the Engineer.)



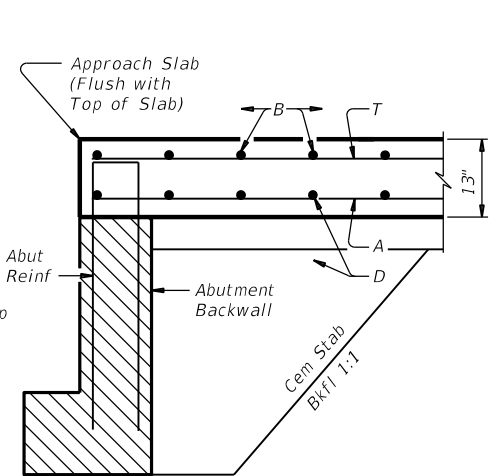
**SECTION A-A**



**SECTION B-B**



**SECTION C-C ⑤**



**SECTION D-D**

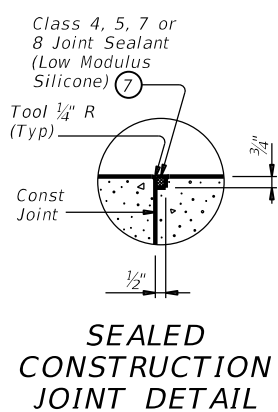
Cover dimensions are clear dimensions, unless noted otherwise.



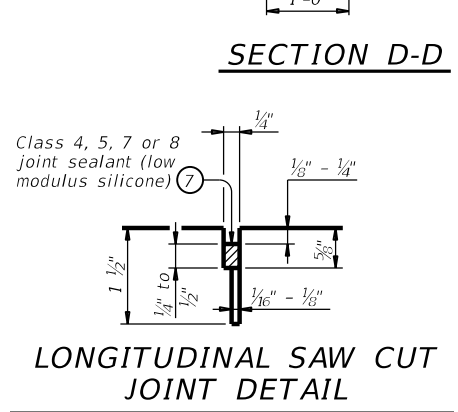
**BRIDGE APPROACH SLAB  
ASPHALTIC CONCRETE PAVEMENT**

**BAS-A-25 (HOU)**

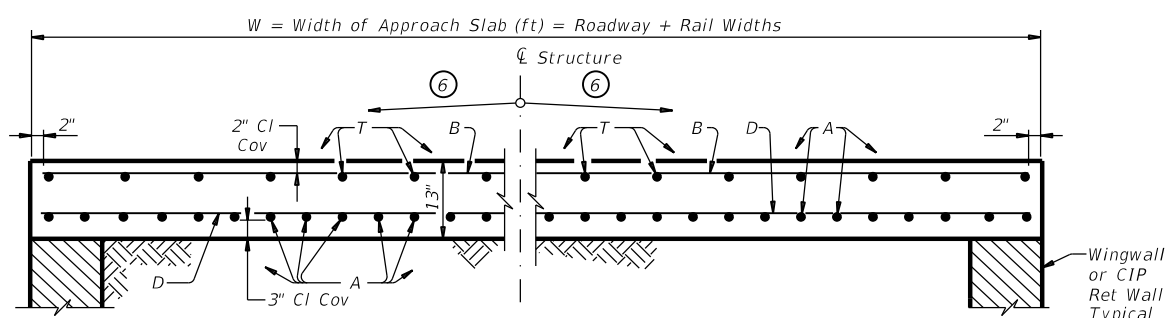
FILE: BAS-A-25(HOU).DGN	DN: TxDOT	CK: TxDOT	DW: TxDOT	CK: TxDOT
©TxDOT REVISIONS 04/2025: 2024 Spec. Update.	CONT	SECT	JOB	HIGHWAY
	DIST	COUNTY	SHEET NO.	



**SEALED CONSTRUCTION JOINT DETAIL**



**LONGITUDINAL SAW CUT JOINT DETAIL**



**TRANSVERSE SECTION**

DATE: FILE: