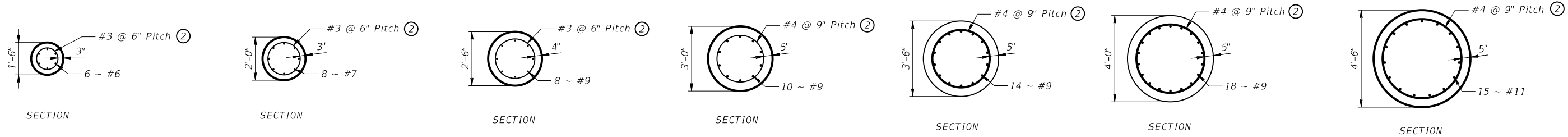


DISCLAIMER:
The use of this standard is governed by the "Texas Engineering Practice Act". No warranty of any kind is made by TxDOT for any purpose whatsoever. TxDOT assumes no responsibility for the conversion of this standard to other formats or for incorrect results or damages resulting from its use.



18" DRILLED SHAFT

Located at bridge abutment wingwalls.

24" DRILLED SHAFT

Located at prestressed concrete slab beam bridges.

30" DRILLED SHAFT

Located at bridge abutments or prestressed concrete slab beam bridges.

36" DRILLED SHAFT

Located at bridge abutments and select bridge bents.

42" DRILLED SHAFT

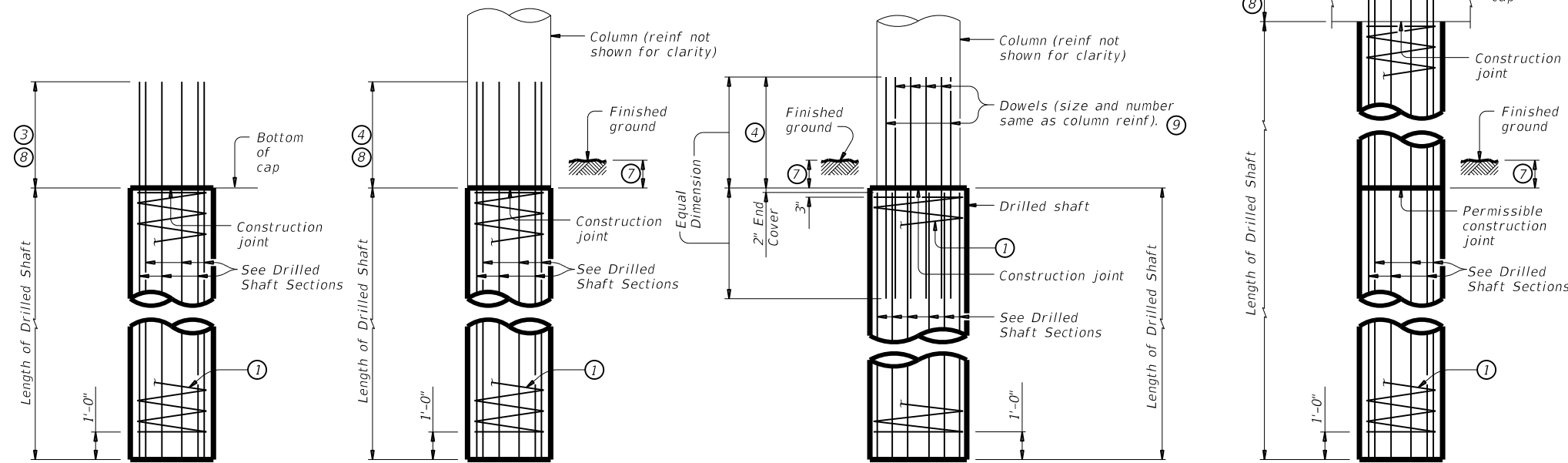
Located at bridge bents.

48" DRILLED SHAFT

Located at bridge bents.

54" DRILLED SHAFT

Located at bridge bents.



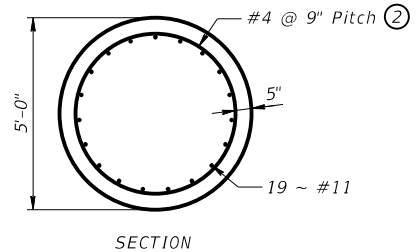
ABUTMENTS & WINGWALLS

**INTERIOR BENTS
DRILLED SHAFT DIA
EQUAL TO COLUMN DIA**

**INTERIOR BENTS
DRILLED SHAFT DIA
GREATER THAN COLUMN DIA**

**SHORT INTERIOR BENT
DRILLED SHAFT DETAIL**

DRILLED SHAFT ELEVATION DETAILS



60" DRILLED SHAFT

Located at bridge bents.

- ① Refer to drilled shaft section for spiral size and pitch.
- ② Provide one and half flat turns top and bottom.
- ③ Min extensions into support element
#6 Bars = 1'-11"
#7 Bars = 2'-0"
#9 Bars = 2'-3"
- ④ Min lap with column reinforcement
#7 Bars = 3'-3"
#9 Bars = 4'-3"
#11 Bars = 5'-3"
- ⑤ Min extensions into support element
#6 Bars = 1'-11"
#7 Bars = 2'-3"
#9 Bars = 2'-9"
- ⑥ Refer to bridge details for applicable locations. Drilled shafts may extend to the bottom of bent caps for "H" heights of 6 ft and less (as shown on the Bridge Layout), if approved. This option can only be used when the drilled shaft diameter equals the column diameter. Obtain approval of the forming method above the ground line prior to construction. No adjustments in payment will be made if this option is used.
- ⑦ 1'-0" Min, unless shown otherwise on plans.
2'-0" Min at water crossings, unless shown otherwise on plans.
- ⑧ Projecting reinforcing is to be included in unit price bid for drilled shafts.
- ⑨ Dowels are to be included in unit price bid for drilled shafts.

CONSTRUCTION NOTES:

See Bridge Layout and "Foundation Notes" or "Table of Foundation Quantities", if provided, for drilled shaft size, design load, and length required.

Use these drilled shaft details unless shown otherwise on bridge plans.

Refer to bridge details for anticipated locations of drilled shaft casing.

GENERAL NOTES:

Designed according to AASHTO LRFD Bridge Design Specifications.

These details have been modified for the Houston District to facilitate slurry displacement method of drilled shaft installation.

The details shown on this sheet are only applicable for multi-column or multi-drilled shaft bridge abutments and bents. These details are not applicable for retaining walls, sound walls, and sign structures. Drilled shaft details shown on this sheet may be referenced by engineer for footings on drilled shafts. Refer elsewhere in plans for footing details. Reinforcing details may require modification by Engineer of Record for certain loading conditions. Use drilled shaft details provided with bridge plans, when provided, or otherwise noted.

Drilled shaft details for drilled shafts exceeding 60" diameter are shown elsewhere in plans. Drilled shafts exceeding 30" diameter shall have a minimum of 5" clear cover and 1% minimum vertical reinforcing steel.

MATERIAL NOTES:

Provide Class SS Concrete ($f'c = 3,600$ psi), unless shown otherwise.
Provide Grade 60 reinforcing steel, unless shown otherwise.
Galvanize reinforcing if shown elsewhere in the plans.
Provide bar laps for drilled shaft reinforcing, where required, as follows:
Uncoated or galvanized (#6) ~ 2'-10"
Uncoated or galvanized (#7) ~ 3'-3"
Uncoated or galvanized (#9) ~ 4'-3"
Uncoated or galvanized (#11) ~ 5'-3"

Cover dimensions are clear dimensions, unless noted otherwise.
Reinforcing bar dimensions shown are out-to-out of bar.

HL93 LOADING

<p>STANDARD BRIDGE DRILLED SHAFT DETAILS HOUSTON DISTRICT</p>			
<p>BDS-25 (HOU)</p>			
FILE: BDS-25(HOU).DGN	DN: TxDOT	CK: TxDOT	DW: TxDOT
©TxDOT	APRIL 2025	CONTRACT	SECTION
<p>REVISIONS</p> <p>04/2025: 2024 Spec Update. added additional general note for reinforcing details.</p>		DIST	COUNTY
		SHEET NO.	

DATE:
FILE: