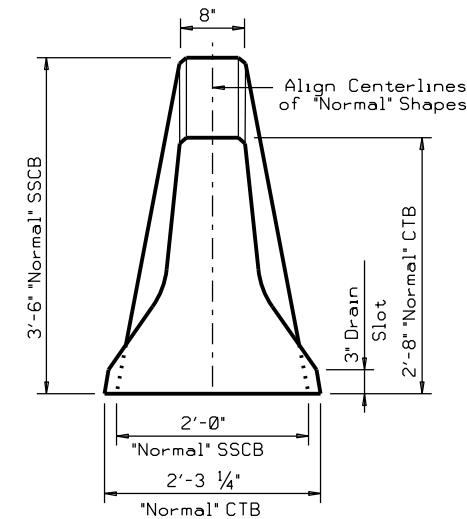
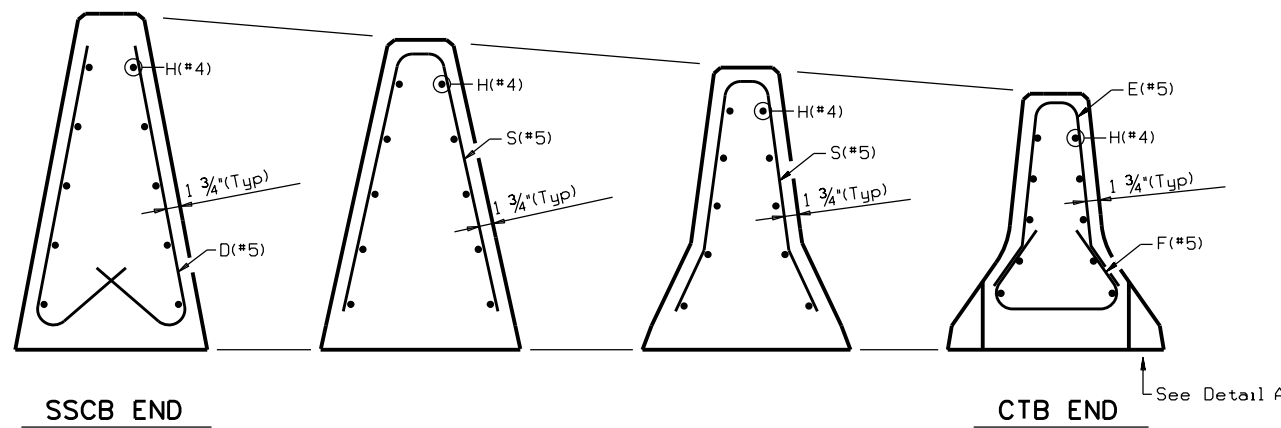
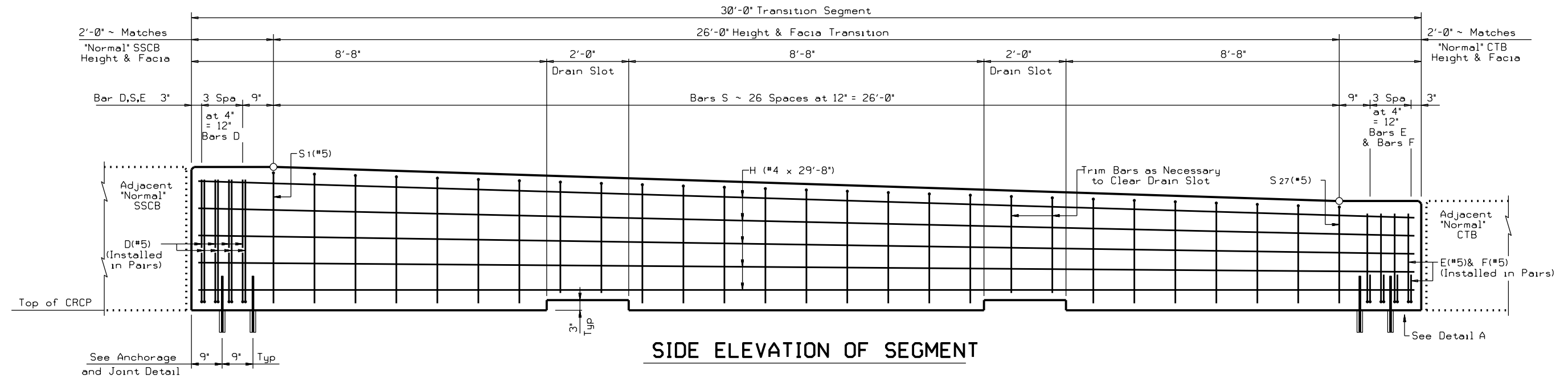


DISCLAIMER: The use of this standard is governed by the "Texas Engineering Practice Act". No warranty of any kind is made by TxDOT for any purpose whatsoever. TxDOT assumes no responsibility for the conversion of this standard to other formats or for incorrect results or damages resulting from its use.



**General Notes:**

This Concrete Safety Barrier Transition Segment has been evaluated and approved to be of equal strength to barriers with similar geometry, which have been crash tested to meet NCHRP Report 350 TL-3 criteria. This Transition may be used for design speeds of 50 mph and greater.

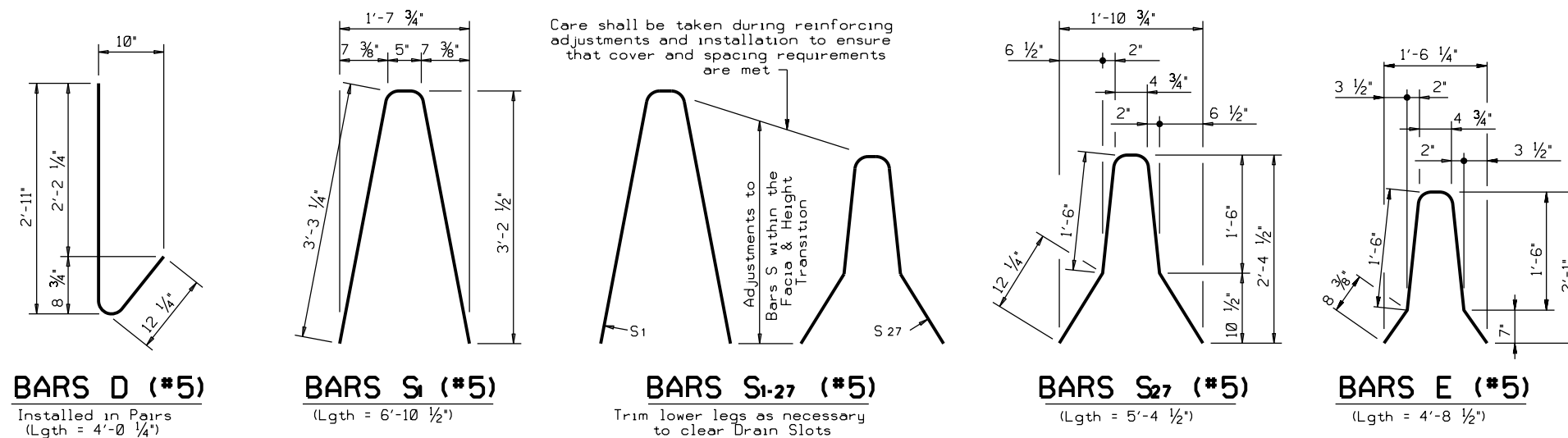
Reinforcing for the Transition Segment shall be Grade 60. All concrete shall be Class 'C'. Chamfer all exposed corners 3/4" x 3/4".

This Transition Segment is cast-in-place. The Transition Segment shall have end faces that are parallel to the adjacent "normal" Barriers.

Height and face profile of the Transition Segment shall be gradually changed, within the limits detailed, so as to match the height and profile of the adjacent "normal" Barriers. Adjust (bend and relocate) the reinforcing within the transition portion of the segment as necessary to conform to the altered barrier shape. Cover and minimum spacing requirements of the reinforcing shall not be violated.

See elsewhere in the plans for barrier dimensions and joint connection details not included herein.

**THIS SHEET MUST BE SIGNED, SEALED AND DATED FOR USE**



SHEET 1 OF 2



**BARRIER TRANSITION DETAILS (SSCB to CTB)**

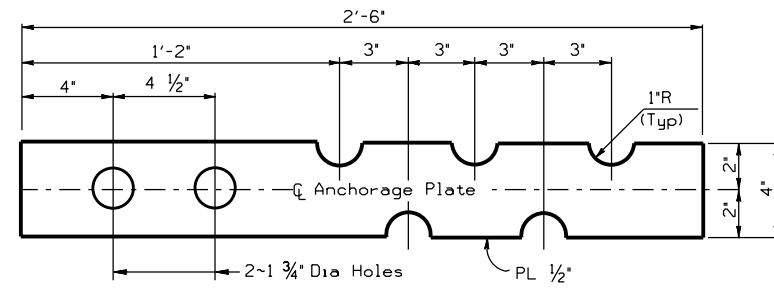
**BTD-25 (HOU)**

FILE: BTD-25 (HOU).dgn	DN: TXDOT	CK: TXDOT	DW: TXDOT	CK: TXDOT
© TXDOT February 2025	CONT	SECT	JOB	HIGHWAY
REVISIONS				
02-25-2024 Spec Updates	DIST	COUNTY	SHEET NO.	

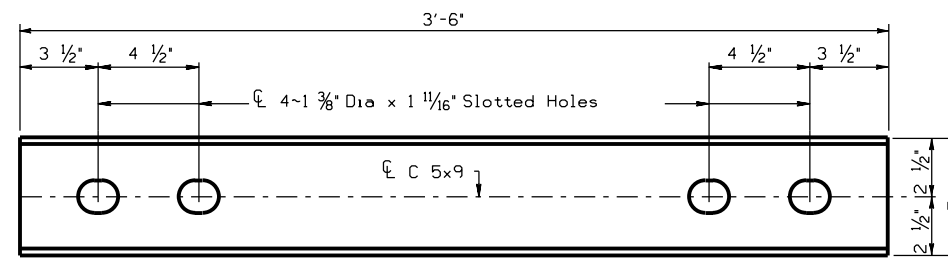
DATE: FILE:

DISCLAIMER: The use of this standard is governed by the "Texas Engineering Practice Act". No warranty of any kind is made by TxDOT for any purpose whatsoever. TxDOT assumes no responsibility for the conversion of this standard to other formats or for incorrect results or damages resulting from its use.

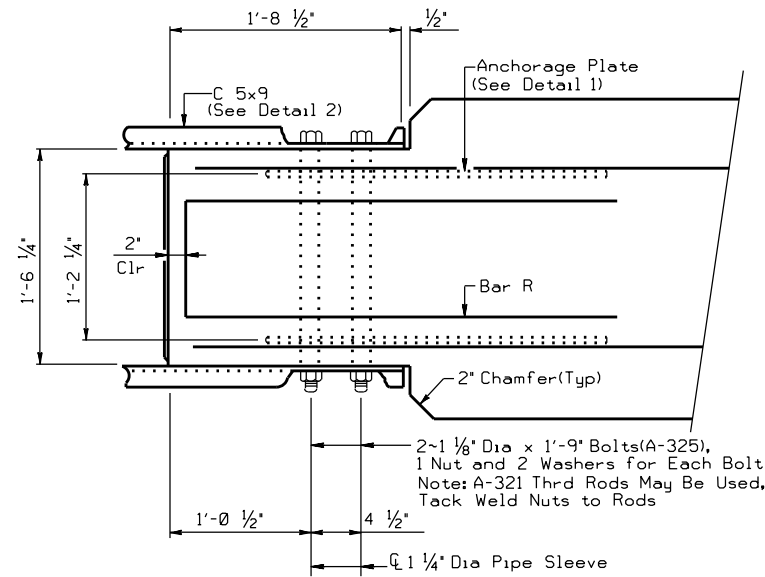
DATE:  
FILE:



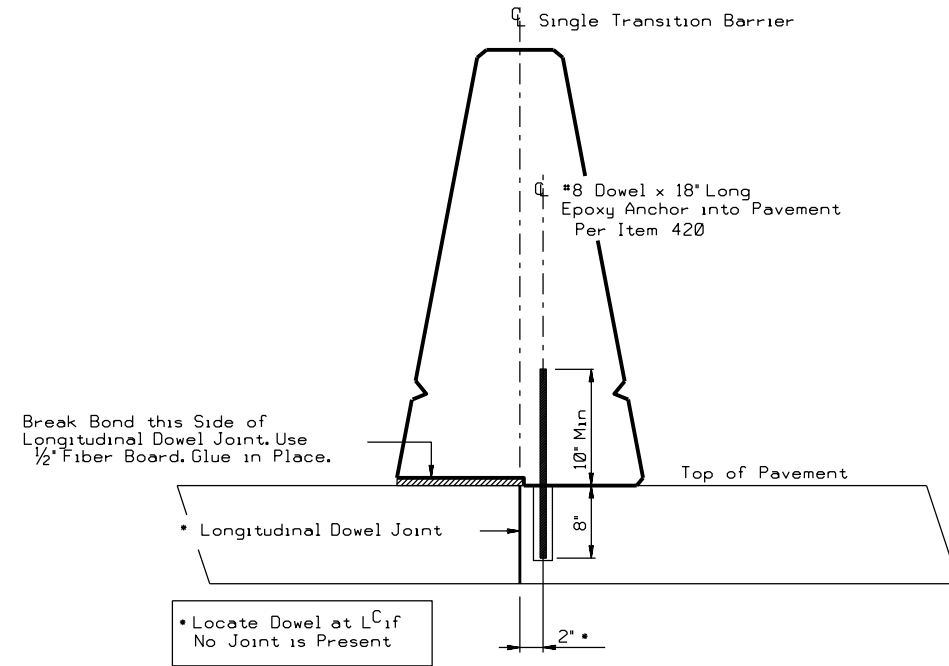
**DETAIL 1**



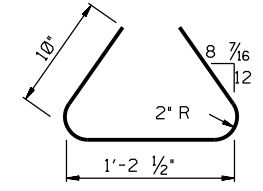
**DETAIL 2**



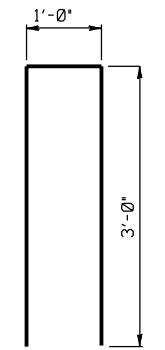
**PLAN**  
CTB END  
Showing Bolt Anchorage, Rebar & Block-out



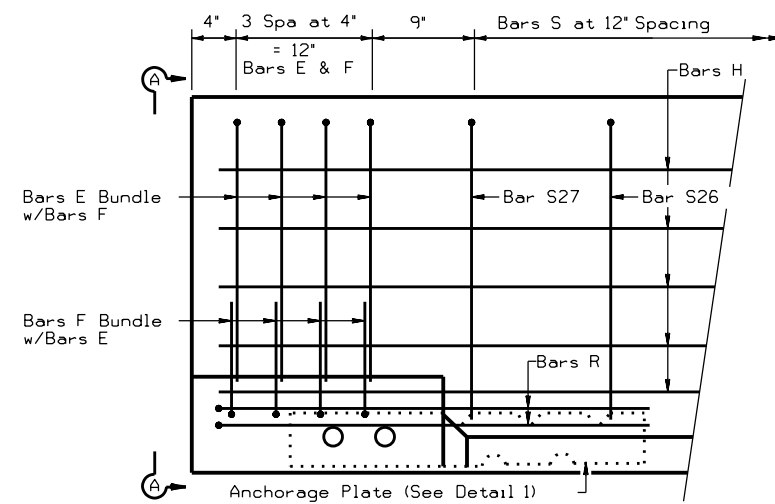
**ANCHORAGE AND JOINT DETAIL**



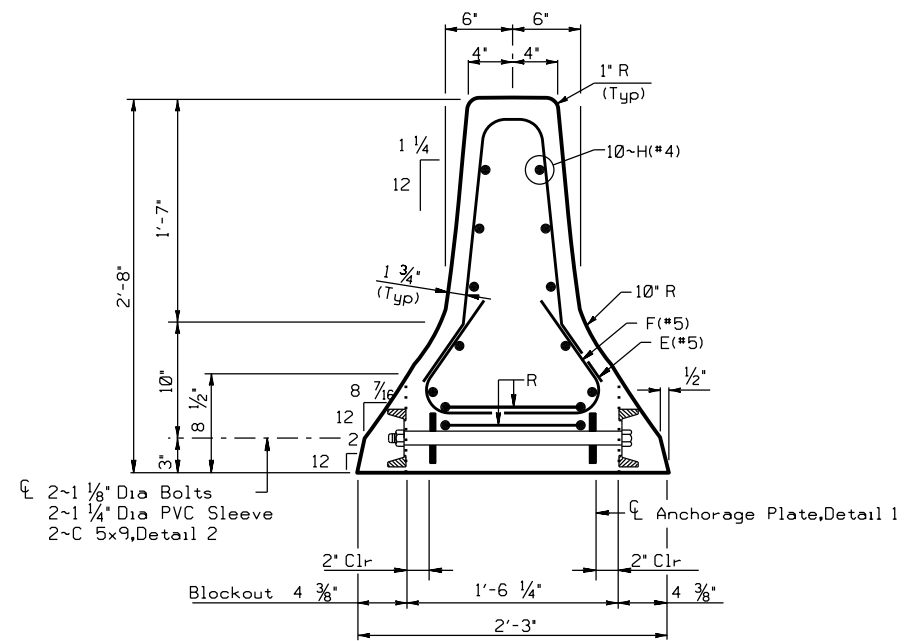
**BAR F**  
(\*5)



**BAR R**  
(\*6)



**ELEVATION**  
CTB END



**SECTION A-A**

APPROXIMATE QUANTITIES FOR A 30 FT. SECTION		
CONCRETE	CY	3.27
REINFORCING STEEL	LBS	390

Approximate Weight Per Foot is 442 Lbs. For Contractor's Information Only.  
R = Radius  
Dia = Diameter

**THIS SHEET MUST BE SIGNED, SEALED AND DATED FOR USE**

SHEET 2 OF 2



**BARRIER TRANSITION DETAILS (SSCB to CTB)**

**BTD-25 (HOU)**

FILE: BTD-25 (HOU).dgn	DN: TXDOT	CK: TXDOT	DW: TXDOT	CK: TXDOT
© TXDOT February 2025	CONT	SECT	JOB	HIGHWAY
REVISIONS				
02-25-2024 Spec Updates	DIST	COUNTY		SHEET NO.