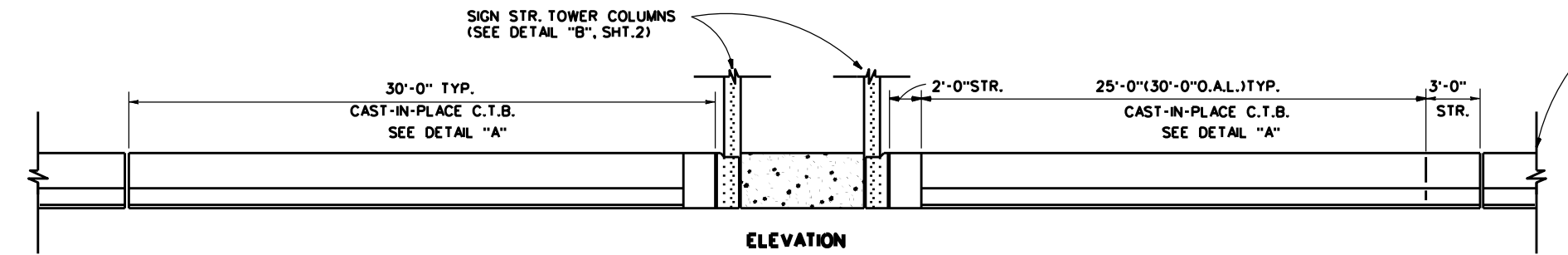
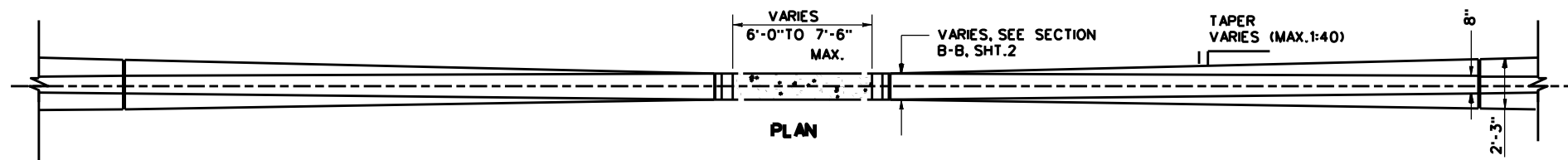
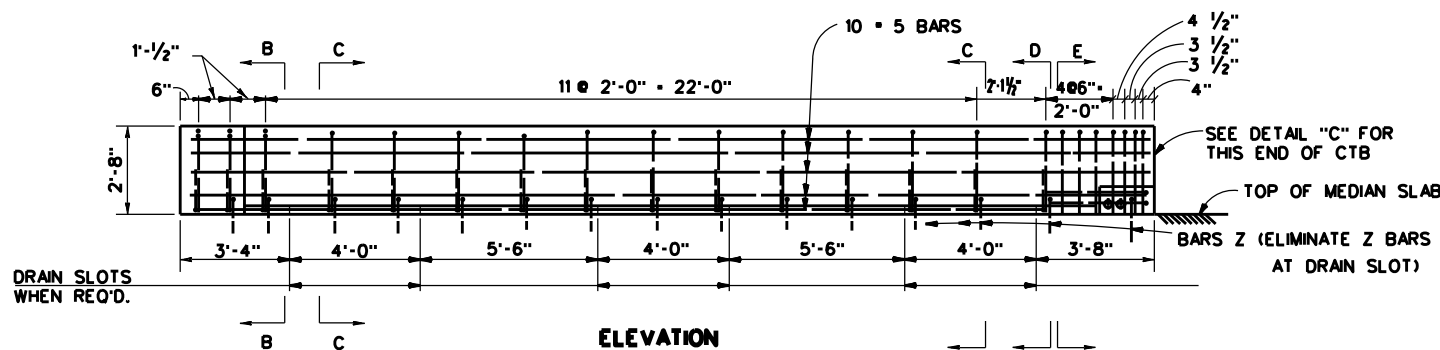
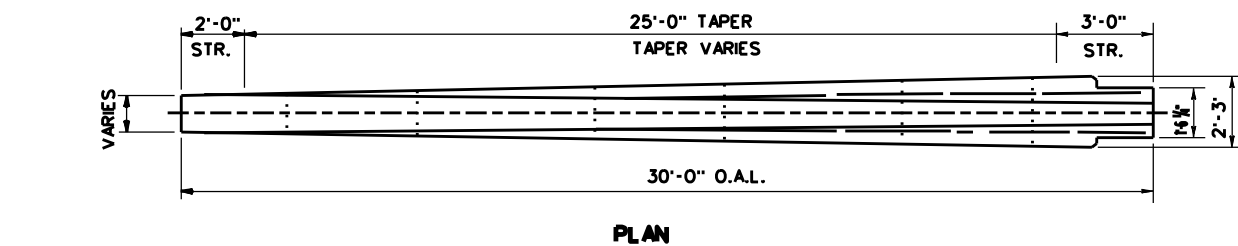


DISCLAIMER: The use of this standard is governed by the "Texas Engineering Practice Act". No warranty of any kind is made by TxDOT for any purpose whatsoever. TxDOT assumes no responsibility for the conversion of this standard to other formats or for incorrect results or damages resulting from its use.

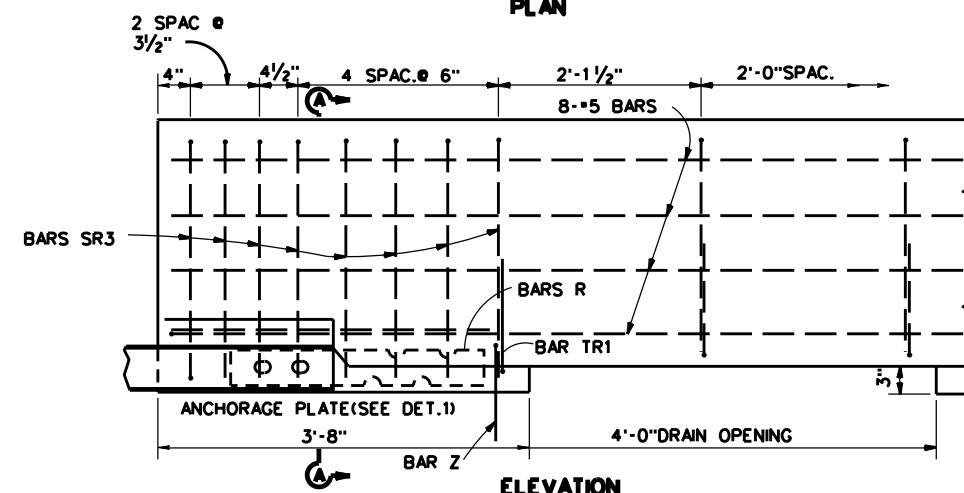
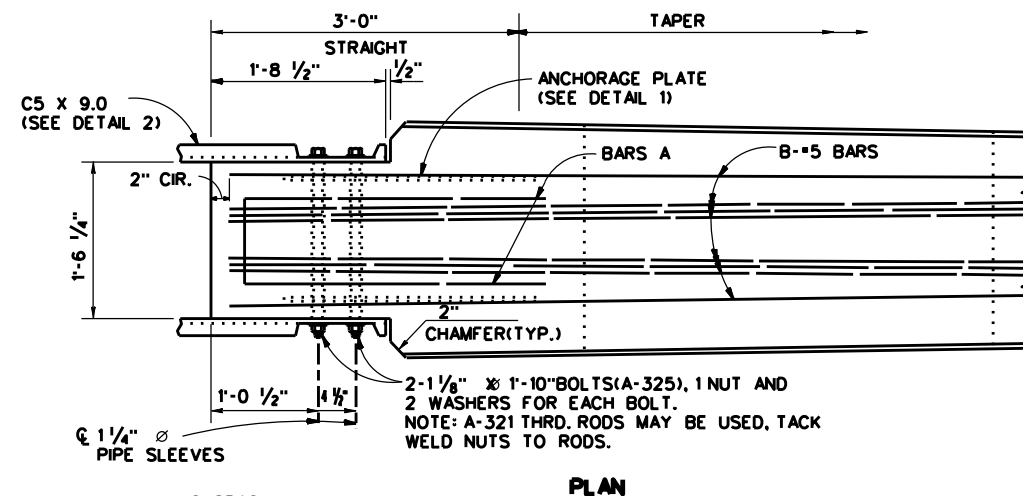
DATE:  
FILE:



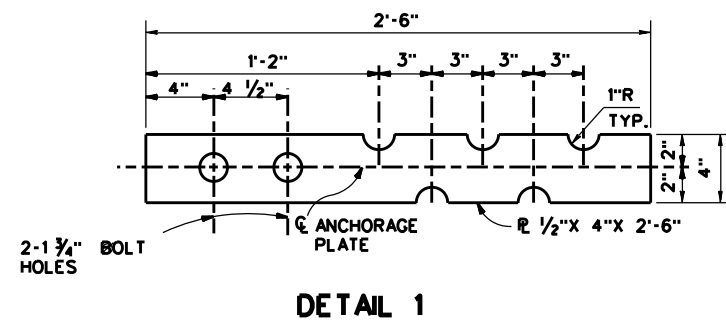
CTB WITH VERTICAL FACE AT SIGN STR.



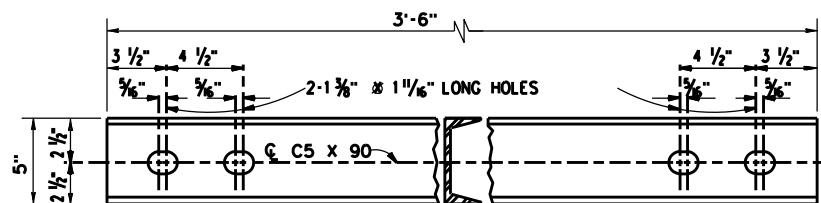
DETAIL "A"  
CAST-IN-PLACE CTB SECTION  
(TYPICAL BOTH SIDES OF SIGN STR. COLUMNS)



DETAIL "C"



DETAIL 1



DETAIL 2

NOTE:  
DRAINAGE OPENINGS IN THE BARRIER SHALL BE PROVIDED ONLY WHERE IT IS NECESSARY TO ACCOMMODATE A FLOW OF WATER THROUGH THE BARRIER. APPROVAL OF THE ENGINEER SHALL BE OBTAINED FOR LOCATION OF DRAINAGE OPENINGS. AT ALL OTHER LOCATIONS THE DRAINAGE OPENINGS SHALL BE OMITTED AND THE BARRIER CAST SOLID. WHERE DRAINAGE OPENINGS ARE REQUIRED, THERE SHALL BE THREE 4'-0" OPENINGS IN EACH 30' SECTION AS SHOWN.

GENERAL NOTES

1. CHANNEL SECTIONS AND ALL STEEL PLATES SHALL CONFORM TO ASTM DESIGNATION A36.
2. ALL CONCRETE SHALL BE CLASS A,C OR H.
3. ALL LONGITUDINAL REINFORCING STEEL SHALL BE GRADE 60. ALL VERTICAL REINFORCING STEEL SHALL BE GRADE 40.
4. EACH BARRIER SHALL BE DELIVERED WITH 2 CHANNEL SHAPES (C5 X 9.0) AND CONNECTING HARDWARE.
5. ALL C5 X 9.0 CHANNELS SHALL BE HOT-DIP GALVANIZED IN CONFORMANCE TO ASTM DESIGNATION A123. BOLTS, NUTS, AND WASHERS SHALL BE HOT-DIP GALVANIZED TO CONFORM TO ASTM DESIGNATION A153.



CONCRETE TRAFFIC BARRIER  
(ROADWAY CTB AT  
OVERHEAD SIGN BRIDGE  
TOWER CAST IN PLACE)

CTB(OSB-1)-24 (HOU)

FILE: CTB(OSB-1)-24 (HOU).dgn	DN: TXDOT	CK: TXDOT	DW: TXDOT	CK: TXDOT
© TXDOT December 2024	CONT	SECT	JOB	HIGHWAY
REVISIONS				
12-24	DIST	COUNTY		SHEET NO.