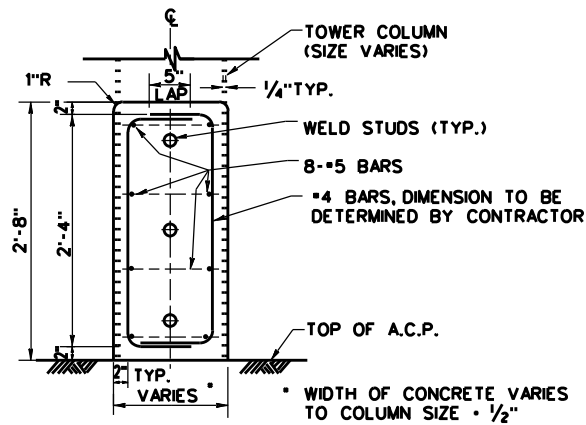
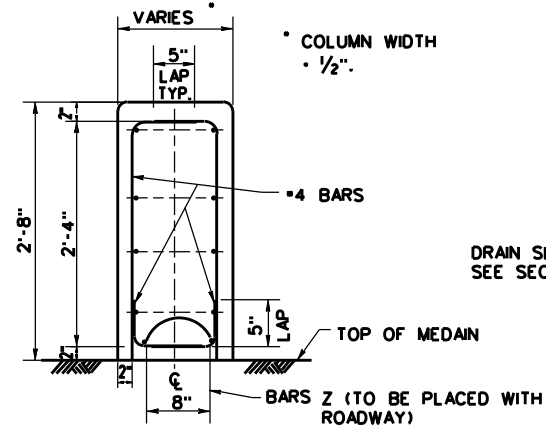


DISCLAIMER: The use of this standard is governed by the "Texas Engineering Practice Act". No warranty of any kind is made by TxDOT for any purpose whatsoever. TxDOT assumes no responsibility for the conversion of this standard to other formats or for incorrect results or damages resulting from its use.

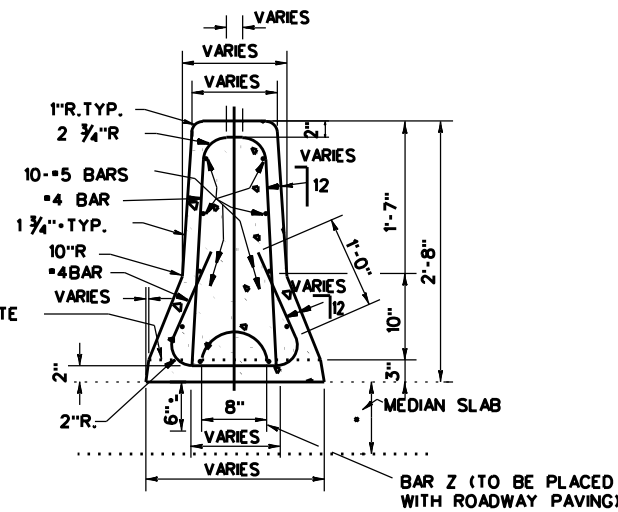
DATE: FILE:



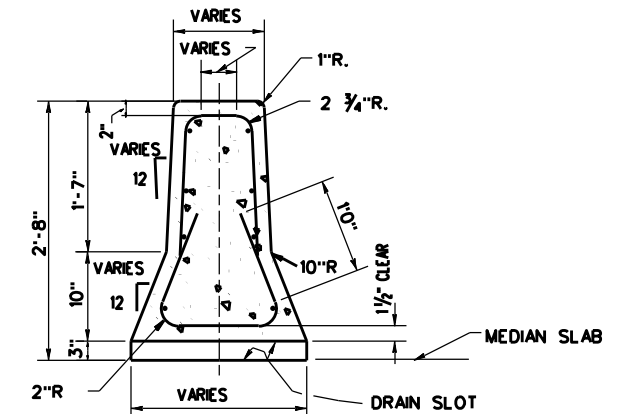
SECTION "A-A"



SECTION "B-B"

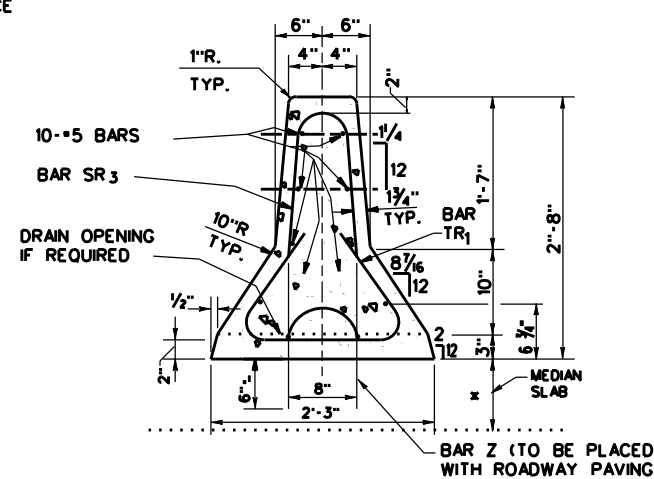


SECTION "C-C" TYPICAL SECTION

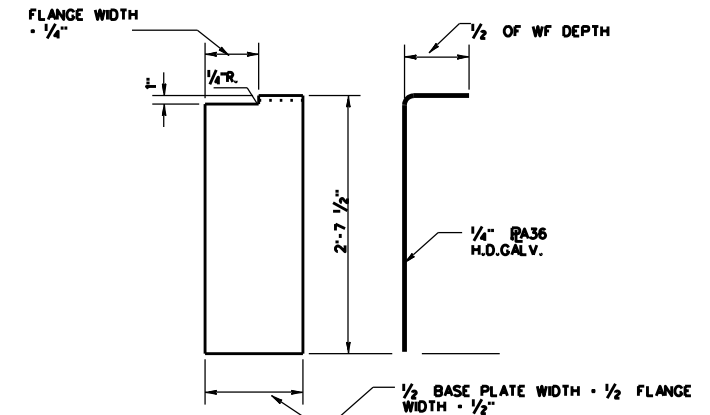
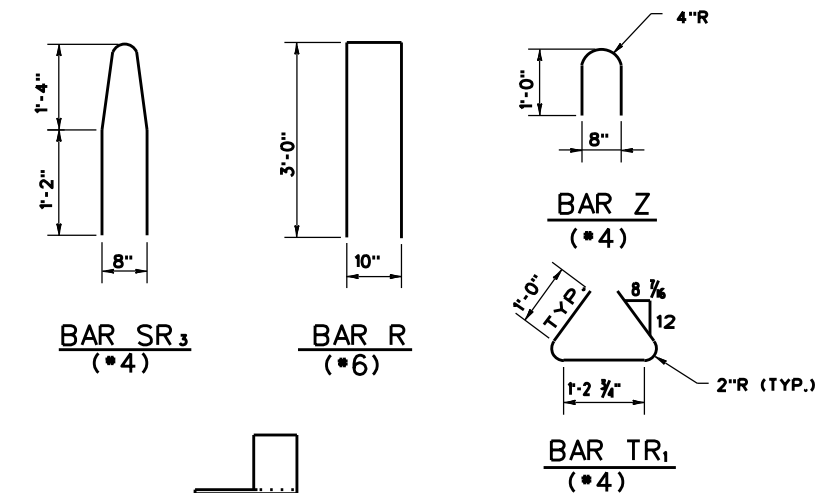


SECTION "C-C" ALTERNATE (AT DRAIN SLOTS, WHEN REQUIRED)

NOTE: RE-BAR DIMENSIONS FOR THESE SECTIONS TO BE DETERMINED BY CONTRACTOR.

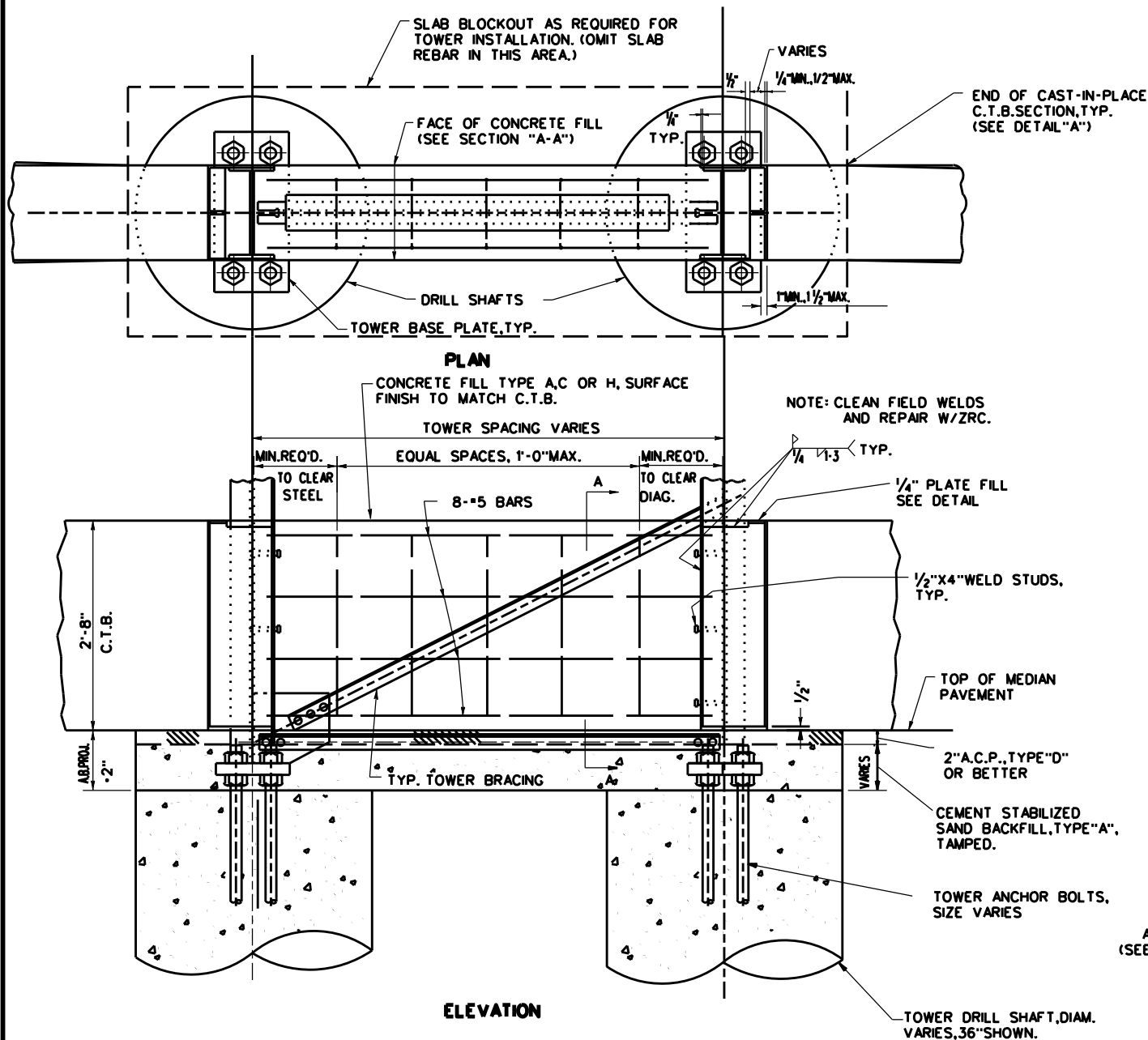


SECTION "D-D"

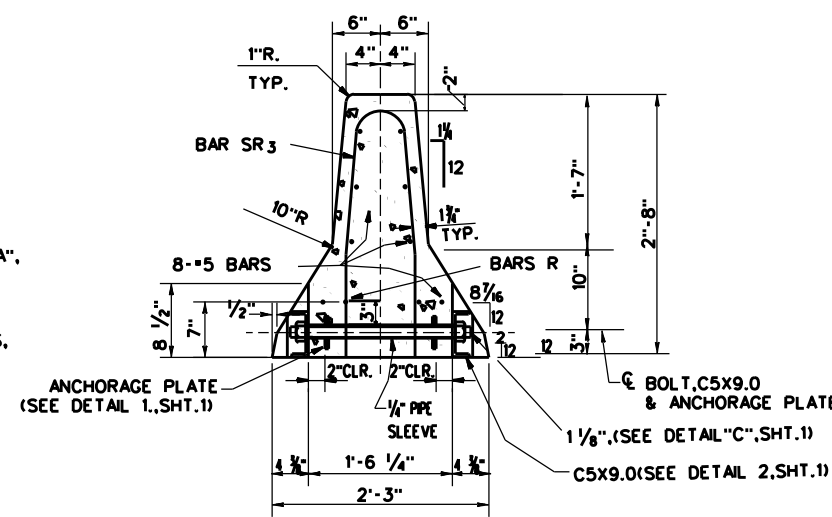


FILLER PLATE

(1) REQ'D. (2) THUS, (2) OPPOSITE



ELEVATION DETAIL "A" TOWER FOUNDATION DETAILS



SECTION "E-E"

Houston District Standard

Texas Department of Transportation

**CONCRETE TRAFFIC BARRIER (ROADWAY CTB AT OVERHEAD SIGN BRIDGE TOWER CAST IN PLACE)**

**CTB(OSB-2)-24 (HOU)**

FILE: CTB(OSB-2)-24 (HOU).dgn	DN: TXDOT	CK: TXDOT	DW: TXDOT	CK: TXDOT
© TXDOT December 2024	CONT	SECT	JOB	HIGHWAY
REVISIONS				
12-24	DIST	COUNTY	SHEET NO.	