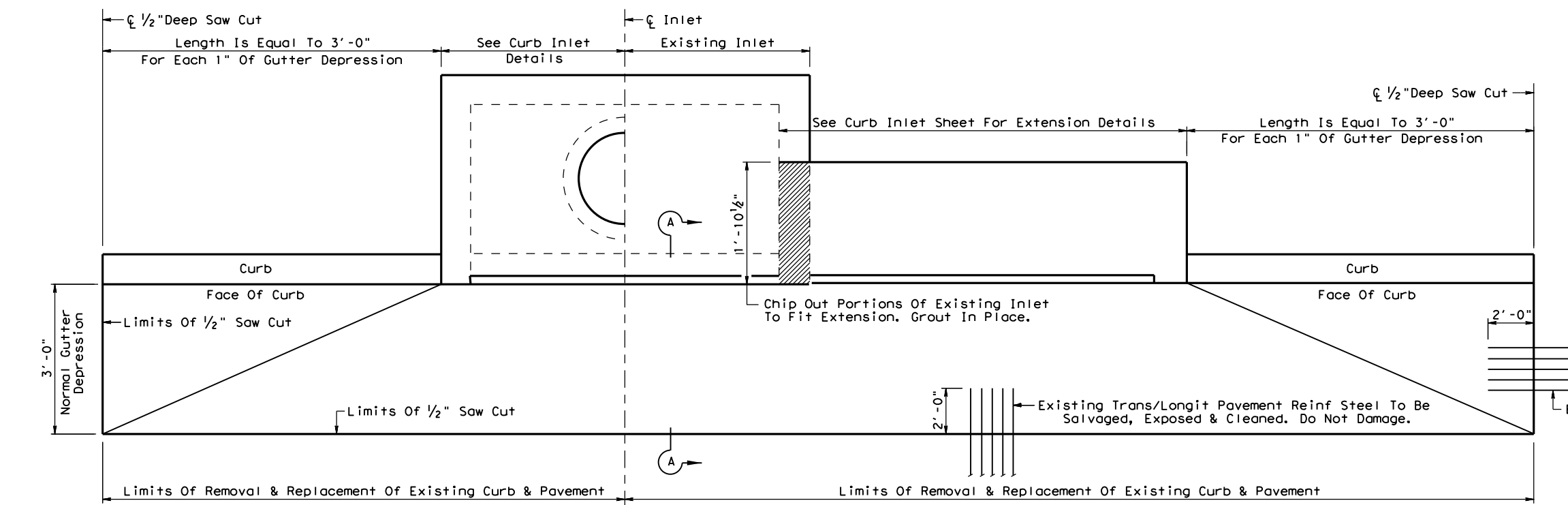


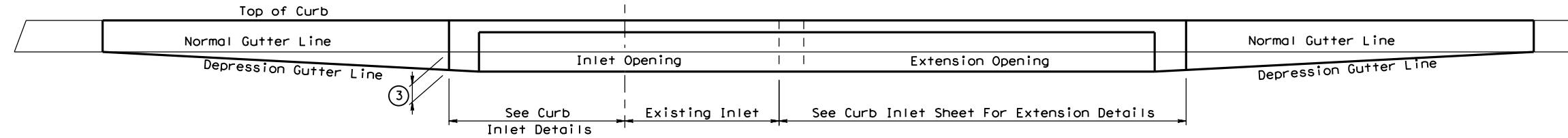
DISCLAIMER: This standard is governed by the "Texas Engineering Practice Act". No warranty of any kind is made by TxDOT for any purpose whatsoever. TxDOT assumes no responsibility for the conversion of this standard to other formats or for incorrect results or damages resulting from its use.

DATE:
FILE:



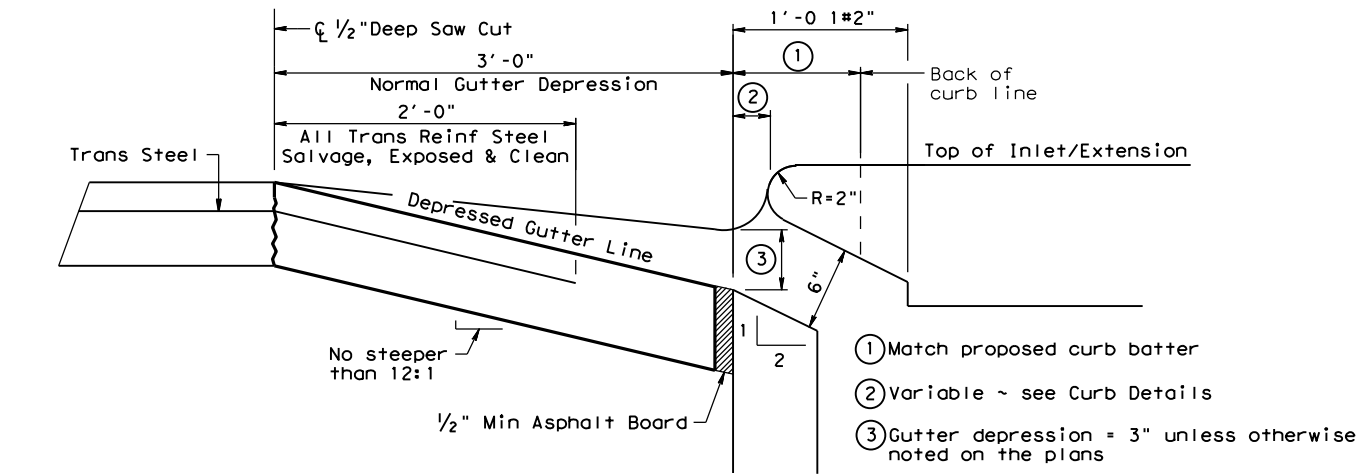
HALF PLAN
Showing New Inlet

HALF PLAN
Showing Inlet Extension To Existing Inlet



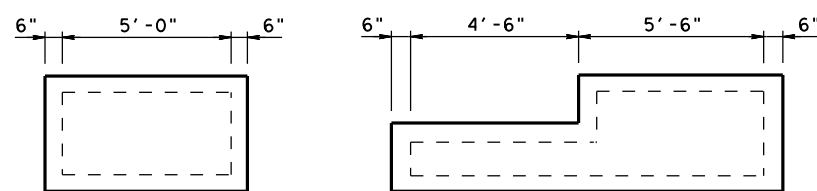
HALF ELEVATION
Showing New Inlet

HALF ELEVATION
Showing Inlet Extension To Existing Inlet



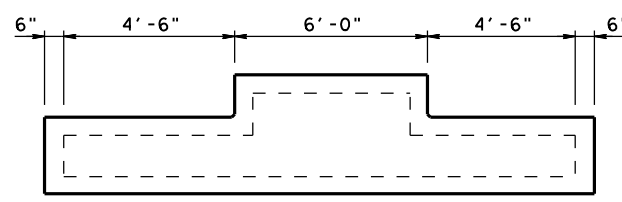
SECTION A-A

- ① Match proposed curb batter
- ② Variable ~ see Curb Details
- ③ Gutter depression = 3" unless otherwise noted on the plans



REGULAR INLET

INLET WITH ONE EXTENSION



INLET WITH TWO EXTENSIONS

PLAN OF INLET AND EXTENSIONS

GENERAL NOTES:
 Provide Class "C" Concrete (f'c=3,600psi Min)
 Provide 3/4" Chamfer On All Exposed Corners.
 Payment For Adding Proposed Inlets And Extensions At Existing Pavement Locations Will Be Made At The Unit Price Bid Which Will Also Include Compensation Of Removing Pavement, Curb, Base And Replacing Same As Directed By The Engineer.
 For Inlet Details See Details Curb Inlet Type "C".



DETAIL FOR ADDING EXTENSIONS AND CURB INLETS AT EXISTING PAVEMENT LOCATIONS

EXC-EPL-25 (HOU)

FILE: EXC-EPL-25 (HOU).DGN	DN: TXDOT	CK: TXDOT	DW: TXDOT	CK: TXDOT
© TXDOT May 2025	CONT	SECT	JOB	HIGHWAY
REVISIONS				
05/2025: 2024 Spec Updates	DIST	COUNTY	SHEET NO.	

R = Radius