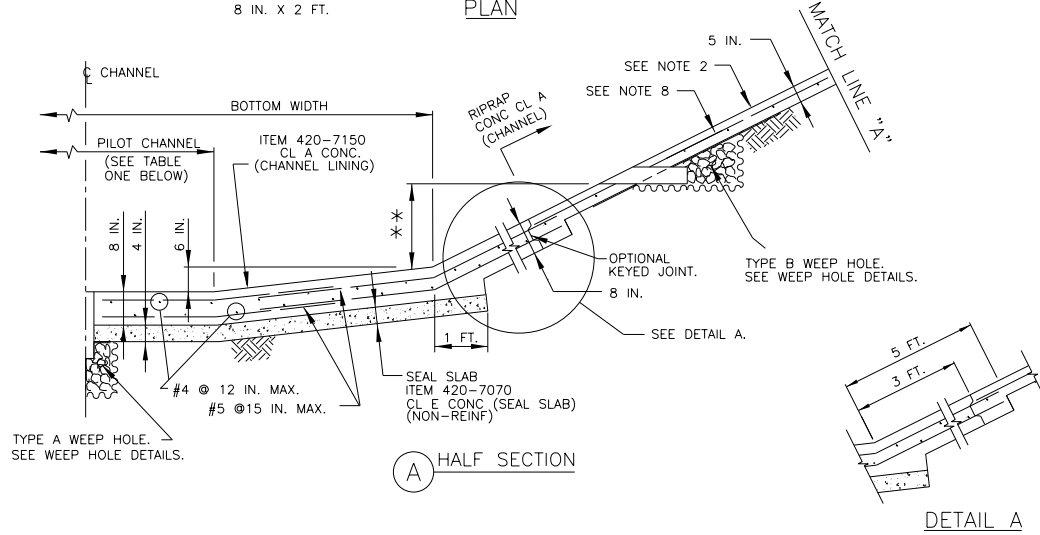
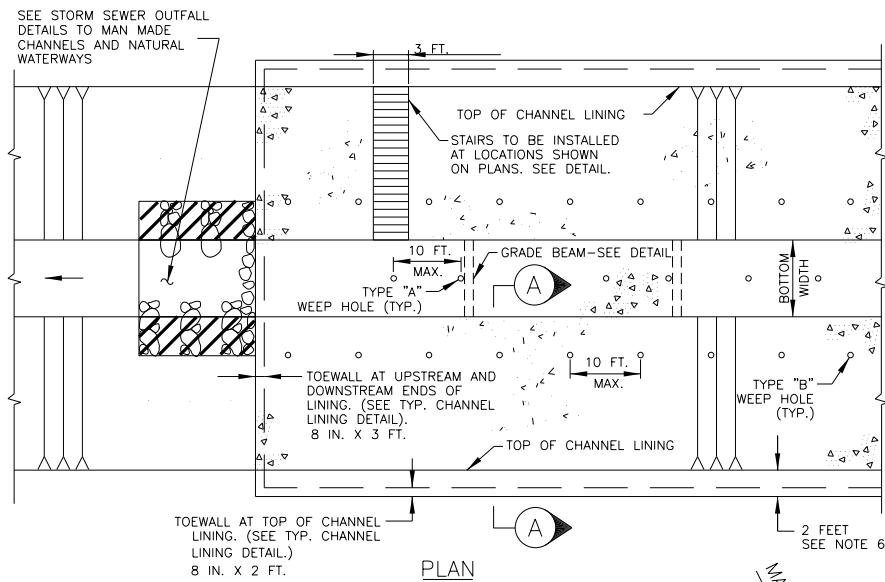
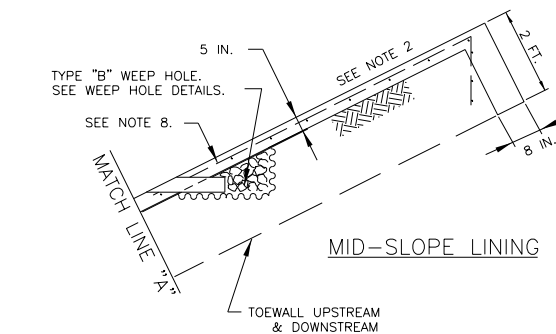


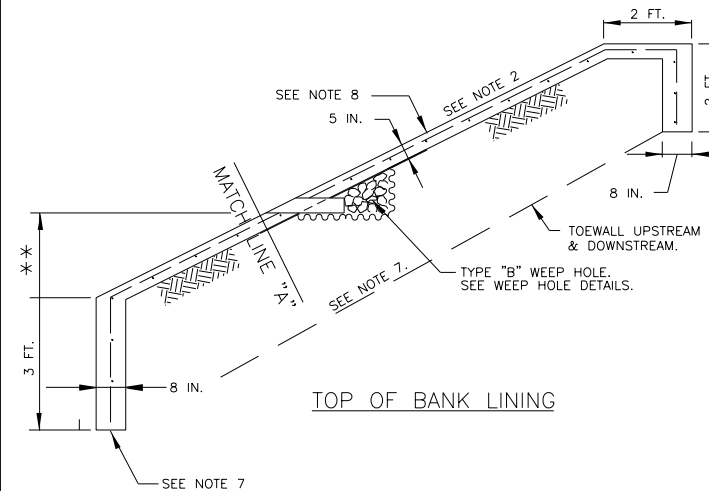
DISCLAIMER: The use of this standard is governed by the "Texas Engineering Practice Act". No warranty of any kind is made by TxDOT for any purpose whatsoever. TxDOT assumes no responsibility for the conversion of this standard to other formats or for incorrect results or damages resulting from its use.



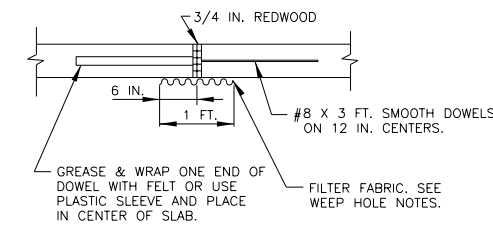
TYPICAL TRAPEZOIDAL CHANNEL LINING



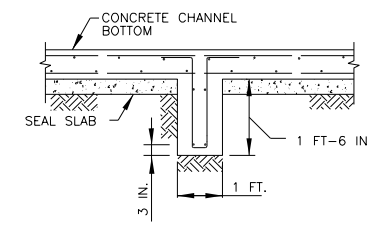
** 1/3 H MAXIMUM OR AS SHOWN ELSEWHERE ON PLANS AS RECOMMENDED BY GEOTECHNICAL REPORT.



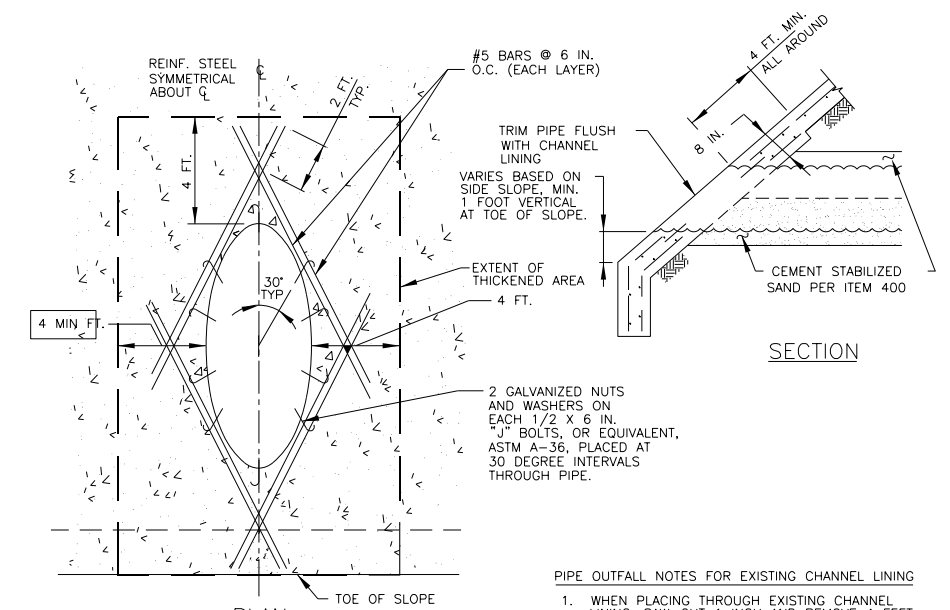
TYPICAL CHANNEL LINING DETAIL



EXPANSION JOINT



GRADE BEAM DETAIL
(SEE NOTE 4)



PIPE OUTFALL DETAILS
(FOR OUTFALLS 24-42 INCH DIA.)

PIPE OUTFALL NOTES FOR EXISTING CHANNEL LINING
1. WHEN PLACING THROUGH EXISTING CHANNEL LINING, SAW-CUT 1 INCH AND REMOVE 4 FEET ALL AROUND.
2. EXPOSE A MIN. OF 18 INCHES OF STEEL.

- (A) THESE ARE GENERAL DETAILS AND NOTES. IF THERE ARE ANY DISCREPANCIES BETWEEN THIS STANDARD AND THE DETAILED SEALED DRAINAGE PLANS, THE SEALED PLANS WILL OVERRIDE.
- (B) DESIGNER TO CONSULT WITH DISTRICT ENVIRONMENTAL SECTION TO DETERMINE IF OUTFALL IS OR IS NOT JURISDICTIONAL. IF JURISDICTIONAL, REQUEST ORDINARY HIGH WATER ELEVATION AND CORP OF ENGINEER'S PERMIT FROM ENVIRONMENTAL SECTION FOR ANY WORK BELOW ORDINARY HIGH WATER ELEVATION.

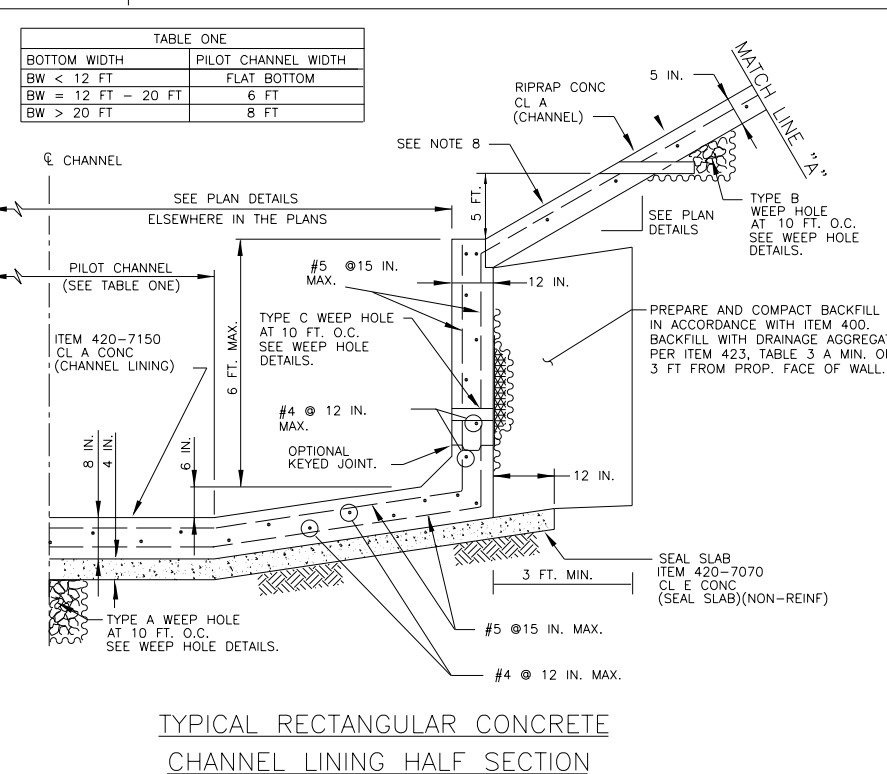
GENERAL NOTES:

- TO BE PAID AS ITEM 420-7002 CL A CONC (MISC)
- SEE SIDE SLOPE DETAILS ELSEWHERE ON PLANS.
- RISE DIMENSION VARIES AS A FUNCTION OF SIDE SLOPE.
- INSTALL STRUCTURAL CONCRETE GRADE BEAMS TRANSVERSELY AT 20 FOOT MAXIMUM CENTERS ON CONCRETE LINED CHANNELS WITH BOTTOM WIDTHS EQUAL TO OR GREATER THAN 20 FEET, GRADE BEAM TO BE PAID AS ITEM 420-7150 CL A CONC. (CHANNEL LINING.)
- JOINTS:
 - PLACE CONSTRUCTION JOINTS IN CONCRETE LOW-FLOW AND TRAPEZOIDAL BOTTOM SECTIONS AT 20 FEET MINIMUM, 60 FEET MAXIMUM, SPACING CONTINUOUSLY THROUGH CHANNEL LINING.
 - PLACE EXPANSION JOINTS IN CONCRETE LOW-FLOW AND TRAPEZOIDAL BOTTOM SECTIONS AT 60 FEET MAXIMUM SPACING CONTINUOUSLY THROUGH CHANNEL LINING.
 - PLACE CONTROL JOINT ON SLOPES AT 20 FOOT SPACING.
- DELETE 2 FOOT FLAT EDGE WHEN LINING IS BELOW TOP OF BANK. SEE MID-SLOPE LINING DETAIL.
- UPSTREAM AND DOWNSTREAM TOE WALL 3 FOOT MINIMUM DEPTH AT BOTTOM OF SLOPE AND 8 INCHES THICK.
- #4 AT 12 IN. O.C. BOTH DIRECTIONS MIN. OR EQUIVALENT WELDED WIRE FABRIC.

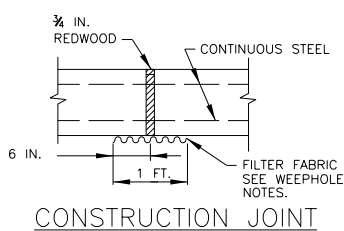
HCFCD
CONCRETE CHANNEL LINING
DETAILS

HCFCD-CCLD-25 (HOU)

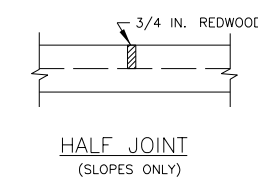
FILE: HCFCD-CCLD-25 (HOU).dgn	DN: TxDOT	CK: TxDOT	DW: TxDOT	CK: TxDOT
©TxDOT February 2025	CONT	SECT	JOB	HIGHWAY
02-25: 2024 Spec Updates	DIST	COUNTY	SHEET NO.	



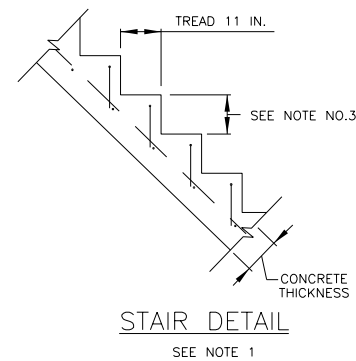
TYPICAL RECTANGULAR CONCRETE CHANNEL LINING HALF SECTION



CONSTRUCTION JOINT



HALF JOINT
(SLOPES ONLY)

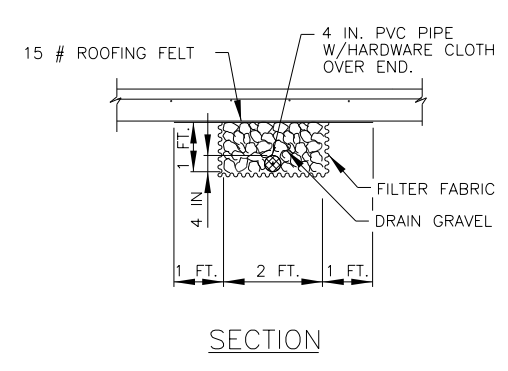
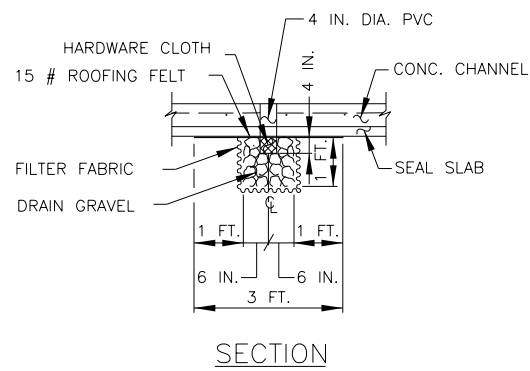
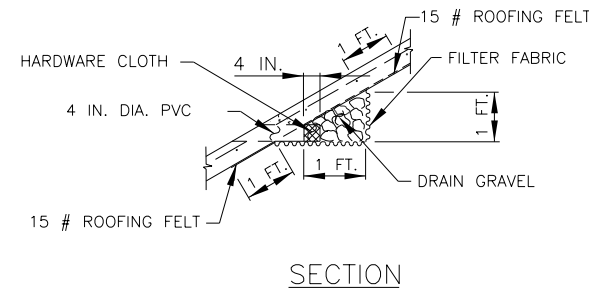
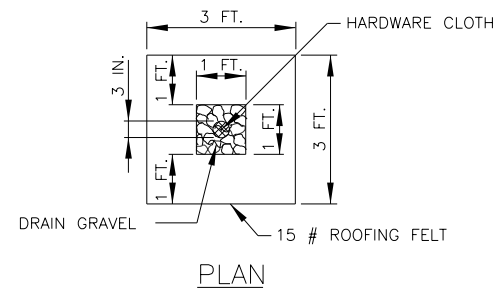


STAIR DETAIL
SEE NOTE 1

DATE:
FILE:

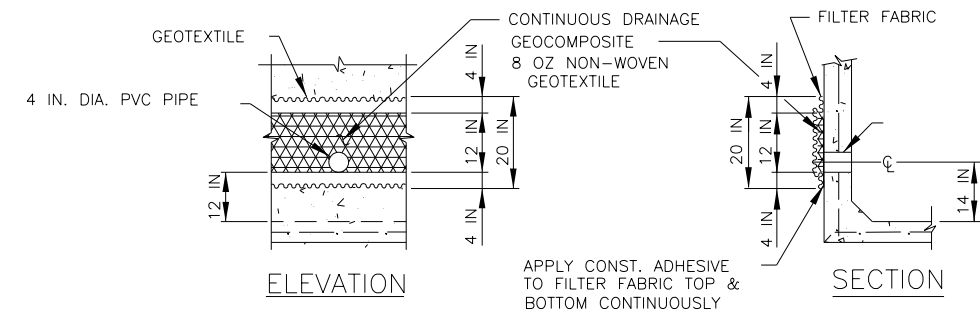
DISCLAIMER: The use of this standard is governed by the "Texas Engineering Practice Act". No warranty of any kind is made by TxDOT for any purpose whatsoever. TxDOT assumes no responsibility for the conversion of this standard to other formats or for incorrect results or damages resulting from its use.

DATE:
FILE:



TYPE "A" WEEP HOLE

TYPE "B" WEEP HOLE



TYPE "C" WEEP HOLE

WEEP HOLE NOTES:

1. MATERIALS:
 - a. PIPE: 4 INCH DIA. SCH. 40 PVC
 - b. DRAIN GRAVEL:

SIEVE SIZE	% FINER
1 IN	100
3/4 IN	70 - 100
3/8 IN	20 - 90
NO. 4	0 - 60
NO. 8	0
 - c. FILTER FABRIC - (TYPE 1 PER ITEM 556)
2. CUT WEEP HOLE PIPE FLUSH WITH CONCRETE SURFACE.
3. TYPE "A" AND "C" WEEP HOLES FOR TYPICAL RECTANGULAR CONCRETE CHANNEL LINING. TO BE STAGGERED.
4. HARDWARE CLOTH MIN. OPEN MAX. OPEN
 1/8 IN 1/4 IN

WEEP HOLE DETAILS



HCFC D
CONCRETE CHANNEL LINING
DETAILS

HCFC D-CCLD-25 (HOU)

FILE: HCFC D-CCLD-25 (HOU).dgn	DN: TXDOT	CK: TXDOT	DW: TXDOT	CR: TXDOT
© TXDOT February 2025	CONT	SECT	JOB	HIGHWAY
REVISIONS				
02-25: 2024 Spec Updates	DIST	COUNTY	SHEET NO.	