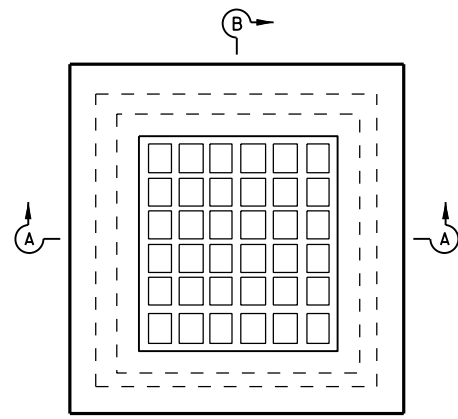
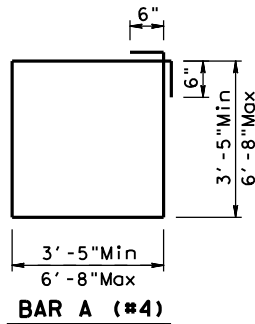


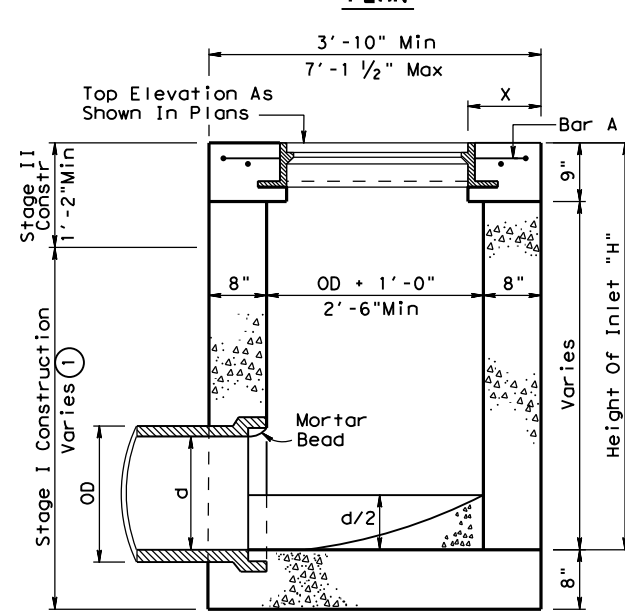
DISCLAIMER: This standard is governed by the "Texas Engineering Practice Act". No warranty of any kind is made by TxDOT for any purpose whatsoever. TxDOT assumes no responsibility for the conversion of this standard to other formats or for incorrect results or damages resulting from its use.



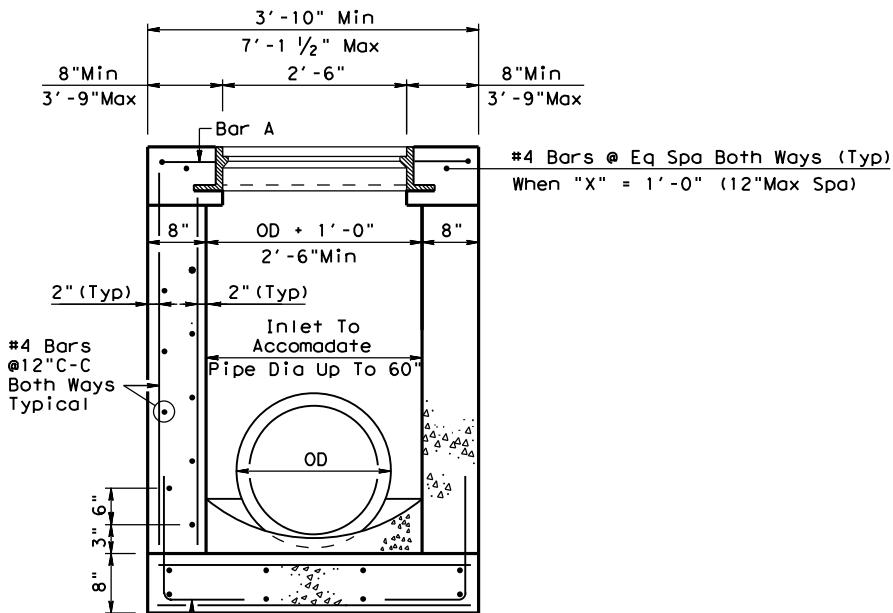
PLAN



BAR A (#4)



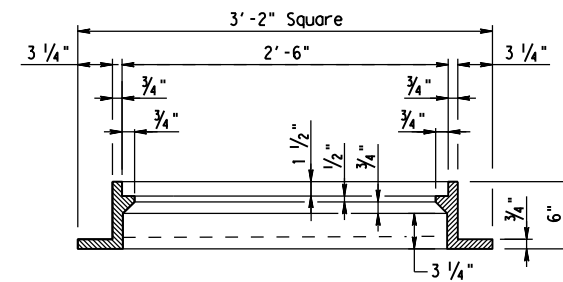
SECTION A-A



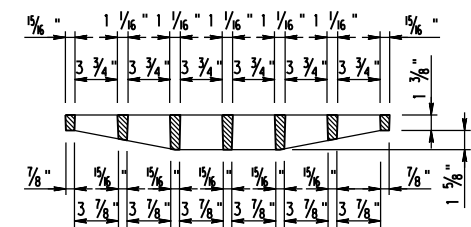
SECTION B-B

TYPE A INLET

① But Not Less Than Six Inches Over Highest Entering Pipe.



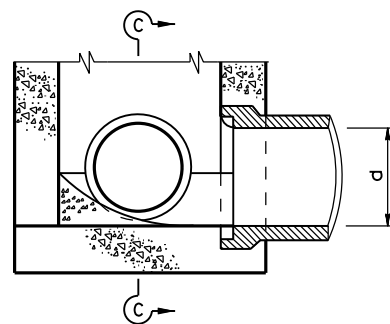
SECTION THRU FRAME



SECTION THRU GRATE

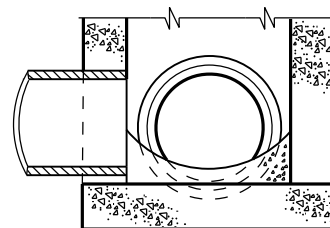
FRAME AND GRATE

Neenah (US Foundry) No. 4108-6355
EJ No. V-4880-1

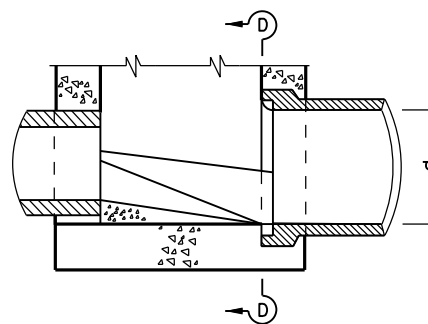


PART SECTION AT INVERT

Showing Shaping Of Invert, Pipe Entering From Adjacent Sides

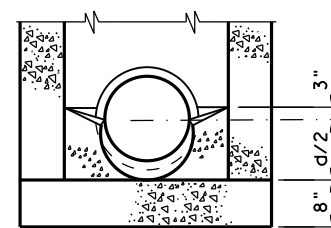


SECTION C-C



PART SECTION AT INVERT

Showing Shaping Of Invert, Pipe Entering From opposite Sides



SECTION C-C

NOT FOR TRAFFIC LOADS
NOT FOR PEDESTRIAN AREAS



INLET TYPE A

HIL-A-25 (HOU)

FILE: HIL-A-25 (HOU).DGN	DN: TXDOT	CK: TXDOT	DW: TXDOT	CR: TXDOT
© TXDOT May 2025	CONT	SECT	JOB	HIGHWAY
REVISIONS				
09/30/2016: Removed Manhole Steps				
05/2025: 2024 Spec Updates				
DIST	COUNTY		SHEET NO.	

D = Diameter

DATE:
FILE: