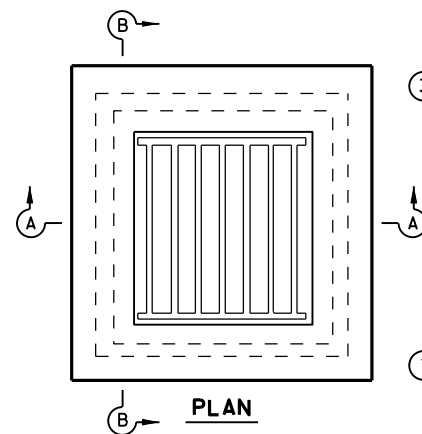


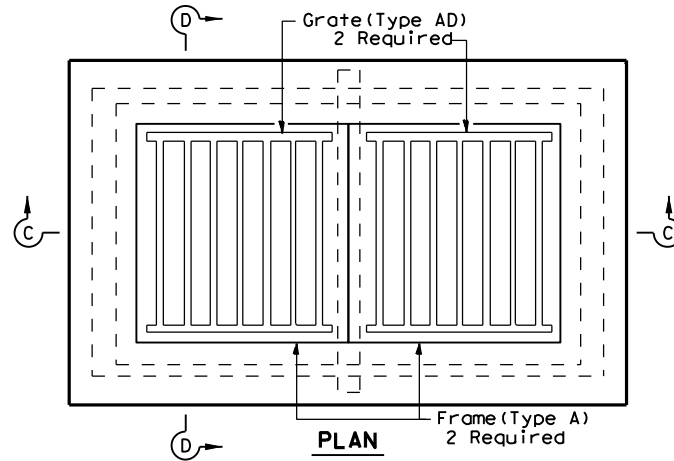
DISCLAIMER: This standard is governed by the "Texas Engineering Practice Act". No warranty of any kind is made by TxDOT for any purpose whatsoever. TxDOT assumes no responsibility for the conversion of this standard to other formats or for incorrect results or damages resulting from its use.

DATE: FILE:

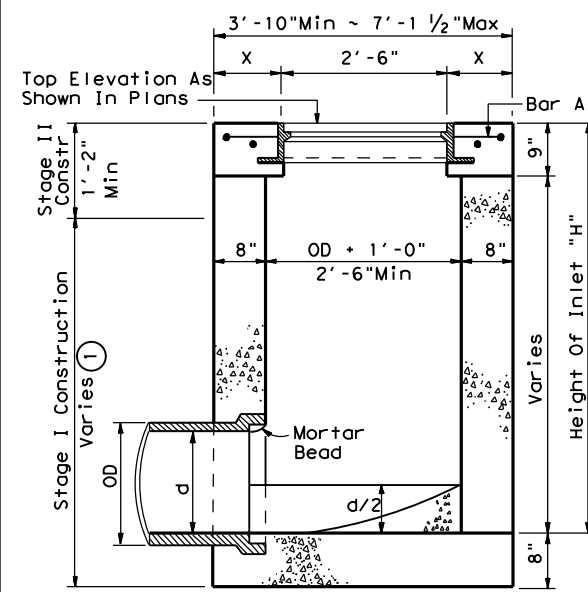


③ Neenah 4107 Frame May Require Modification for Type AD Inlet. Frame Shall Be Supported By a Minimum of 3 1/4" Bearing Area On All 4 Sides.

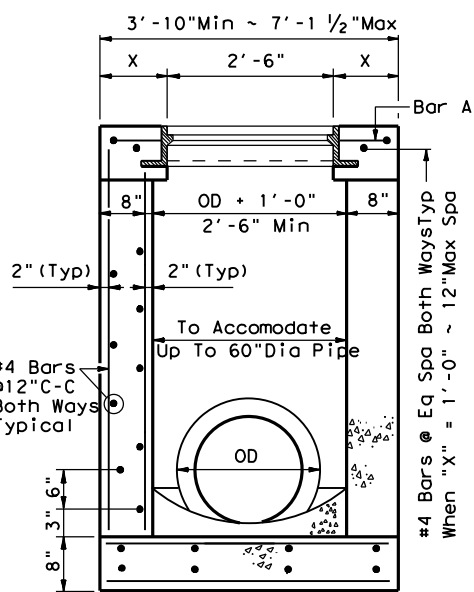
① But Not Less Than Six Inches Over Highest Entering Pipe. X = 8" Min to 3'-9" Max



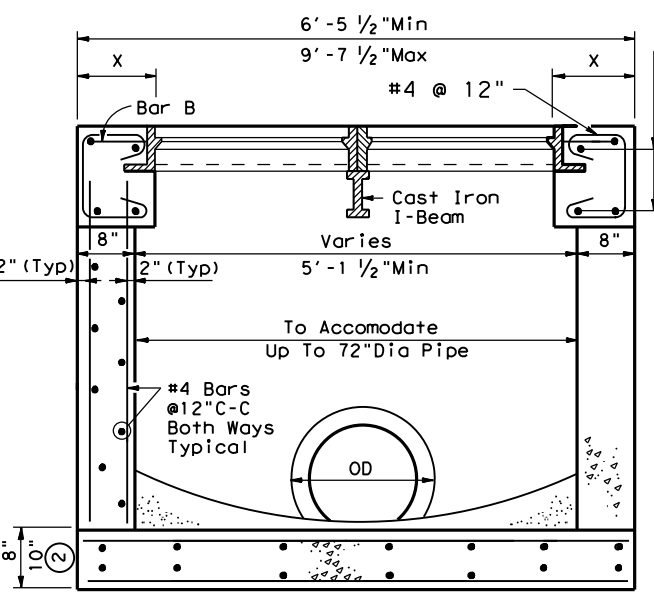
① But Not Less Than Six Inches Over Highest Entering Pipe.
② For Pipe Diameters 66" And Greater



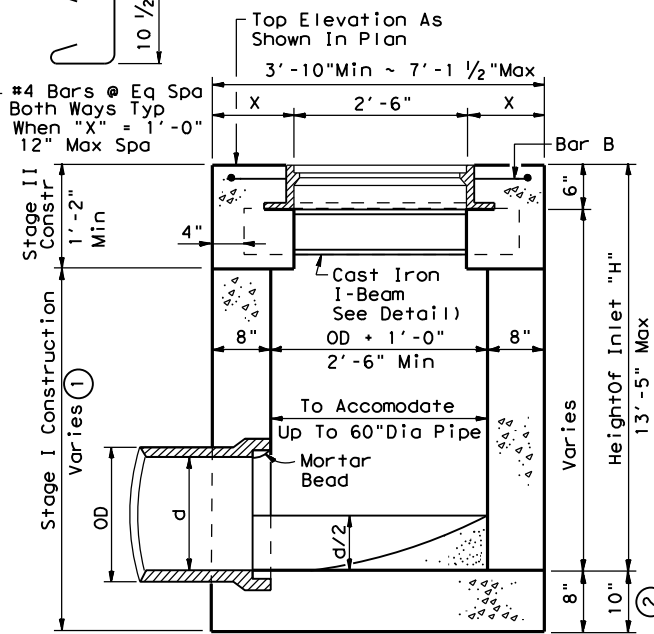
SECTION A-A



SECTION B-B



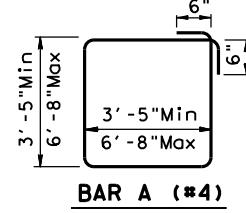
SECTION C-C



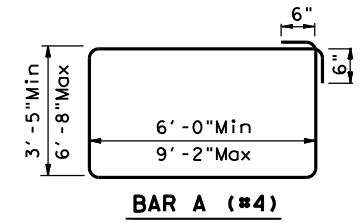
SECTION D-D

INLET TYPE AD

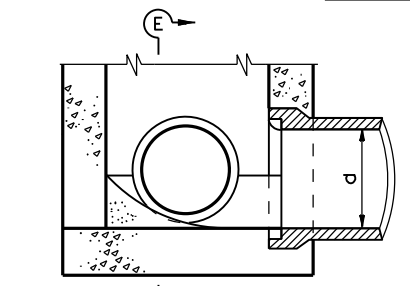
INLET TYPE AAD



BAR A (#4)

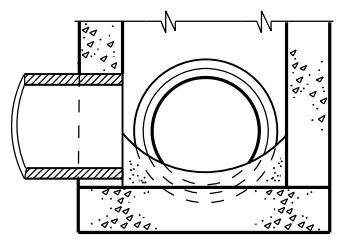


BAR A (#4)

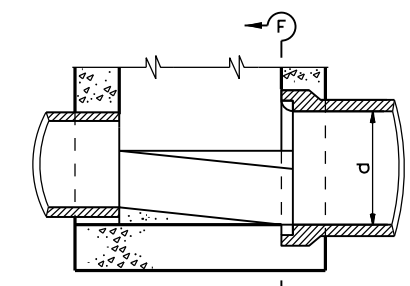


PART SECTION AT INVERT

Showing Shaping Of Invert, Pipe Entering From Adjacent Sides

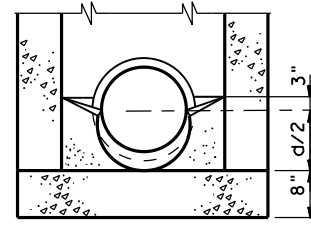


SECTION E-E

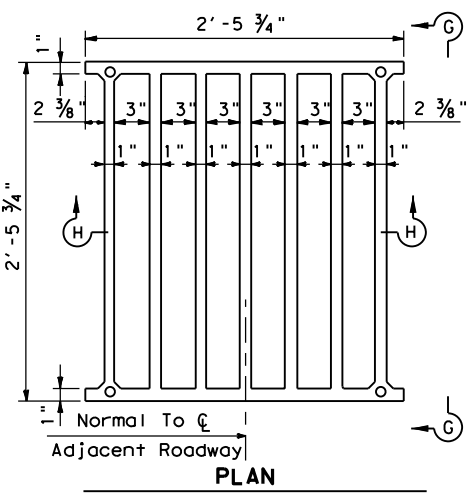


PART SECTION AT INVERT

Showing Shaping Of Invert, Pipe Entering From Opposite Sides



SECTION F-F

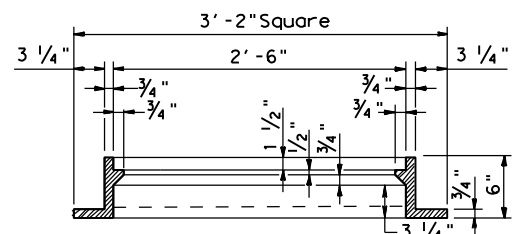


PLAN

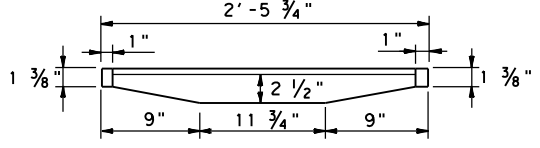
Provide 4 ~ Stainless Steel Hex Head Bolts per Grate

FRAME AND GRATE

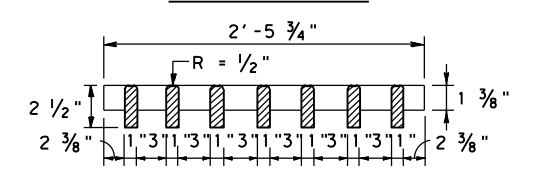
Type AD ~ Neenah (US Foundry) No. 4107-6356 or EJ No.V-4880 ③
Type AAD ~ Neenah (US Foundry) No. 4107-6356 or EJIW No.V-4881 (2 Units)



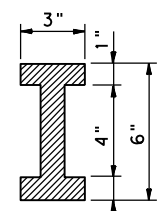
SECTION THRU FRAME



ELEVATION G-G



SECTION H-H



SECTION OF CAST IRON I BEAM

d = Diameter
R = Radius

GENERAL NOTES:

Type AD Inlet Contains a Single Frame With Grate. Type AAD Inlet Contains a Double Frame And Double Grate with an I-beam.
Frame And Grates May Be Gray Cast Iron.
The Furnishing And Installation Of Cast Iron I-Beams Shall Be Considered Subsidiary to Item 465.
Where Size Of Pipes Passing Thru Inlet Exceeds 30", Increase Inside Width To Diameter Of Pipe Plus 1'-0" (OD + 1'-0")
Cast Iron Manhole Steps (See Manhole Details) Spaced At 16" Centers And Located On Wall Specified By The Engineer Shall Be Provided And Installed Where "D" Exceeds 5'-0".
See Standard or Detail Sheet For Excavation and Backfill Diagrams.
Type AD & AAD Inlets Shall Be Built To Stage I And Finished After All Grading Operations Are Substantially Completed.
Shop Drawings Will Be Required For Precast Construction Of Inlets.
Upon Installation of the Grates the Threads of the Bolts shall be Coated with Thread Lock Type Adhesive (Lockite or Equal). Reapply Thread Lock Adhesive Each Time Grates Are Removed.
Bolted Grates and Frames are a Matched Set, Do Not Unbolt Without "Match Marking" so that Grates and Frames are Re-installed as Originally Built.
Provide Class "C" Concrete for CIP or Class "H" Concrete for Precast Elements With Modifications Per Item 465. Provide Min f'c=3,600psi. Provide Grade 60 Reinforcing Steel.

NOT FOR TRAFFIC LOADS
NOT FOR PEDESTRIAN AREAS

<h2>INLET TYPES AD & AAD</h2>			
<h3>HIL-AD/AAD-25 (HOU)</h3>			
FILE: HIL-AD_AAD-25 (HOU).DGN	DN: TXDOT	CK: TXDOT	DW: TXDOT
© TXDOT May 2025	CONT	SECT	JOB
REVISIONS		HIGHWAY	
05/2025: 2024 Spec Updates			
DIST	COUNTY	SHEET NO.	