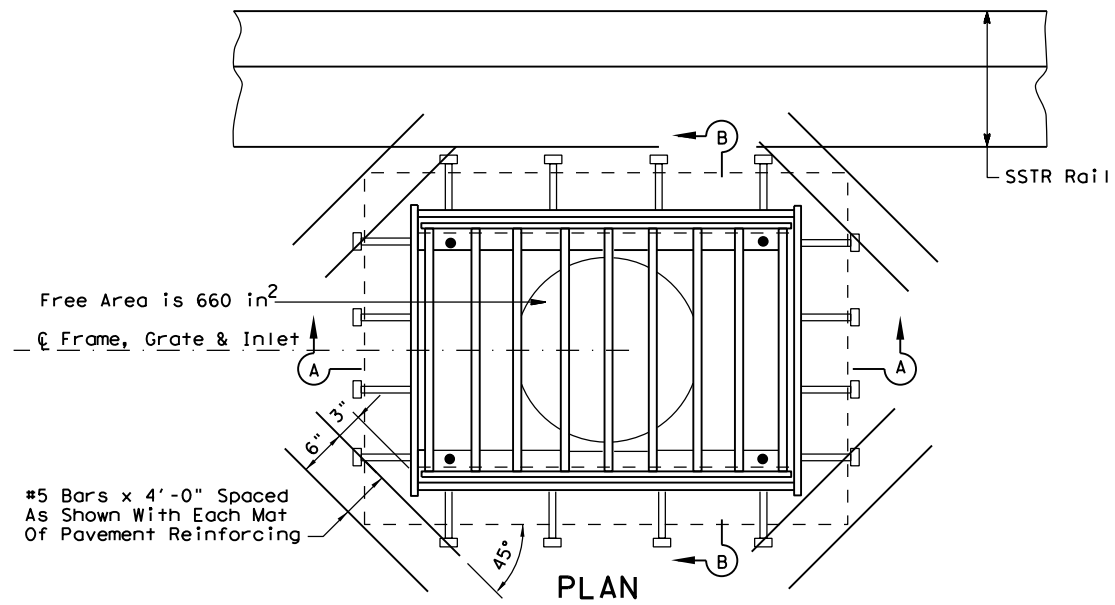


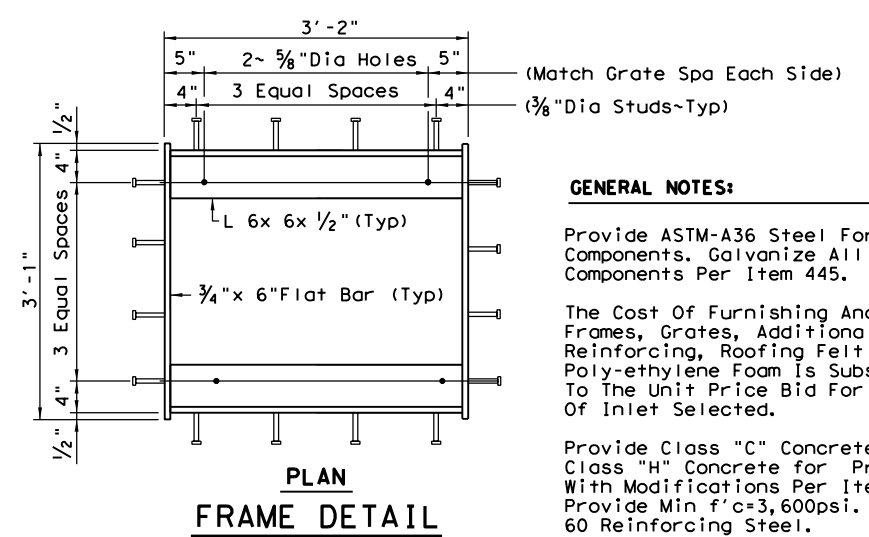
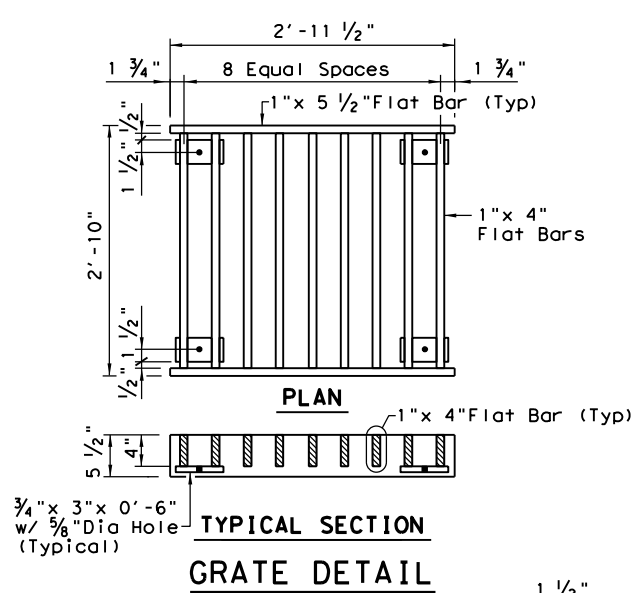
DISCLAIMER: This standard is governed by the "Texas Engineering Practice Act". No warranty of any kind is made by TxDOT for any purpose whatsoever. TxDOT assumes no responsibility for the conversion of this standard to other formats or for incorrect results or damages resulting from its use.

DATE: FILE:

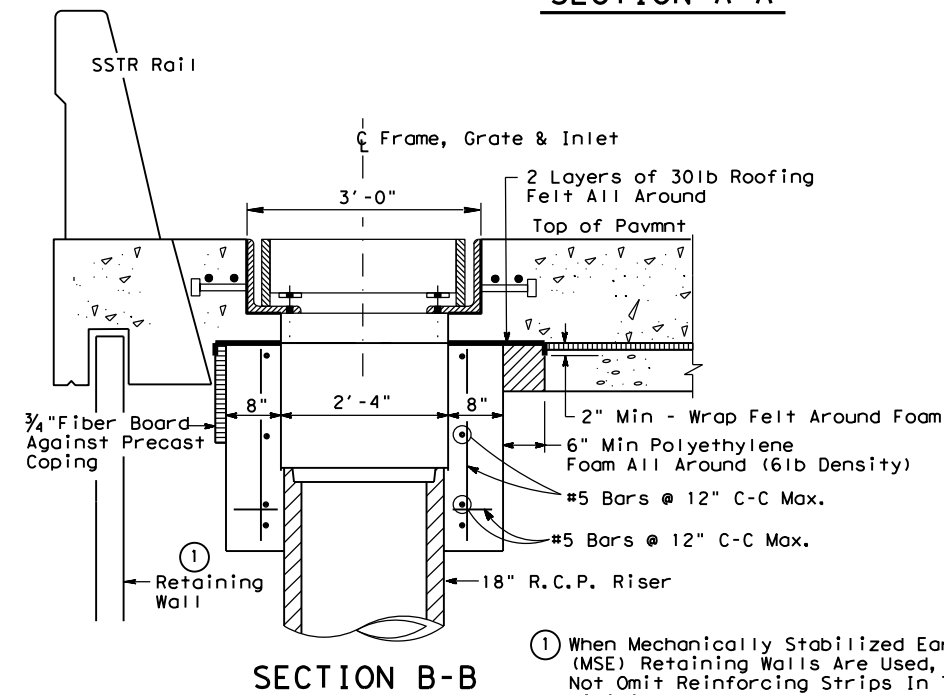
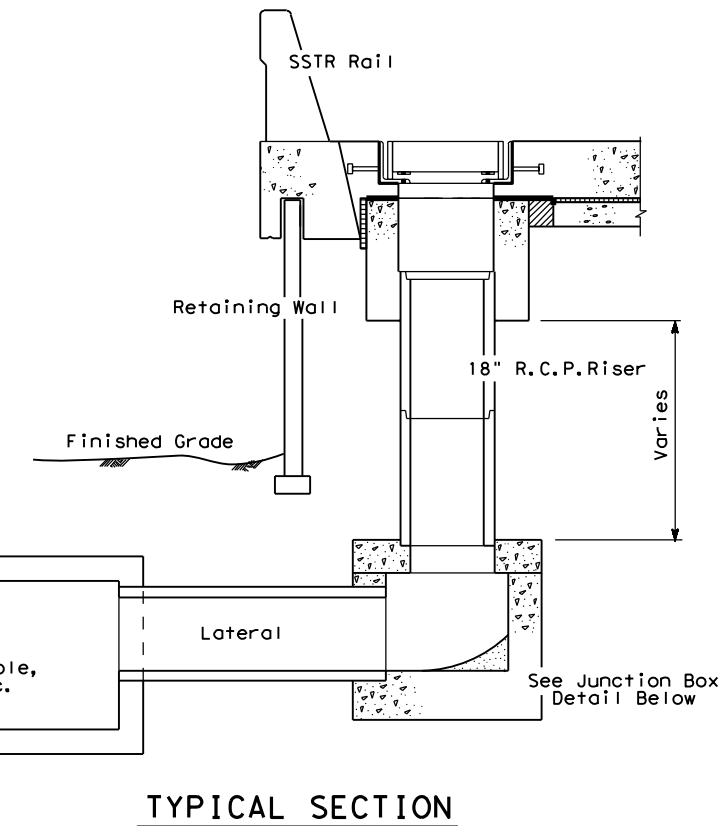
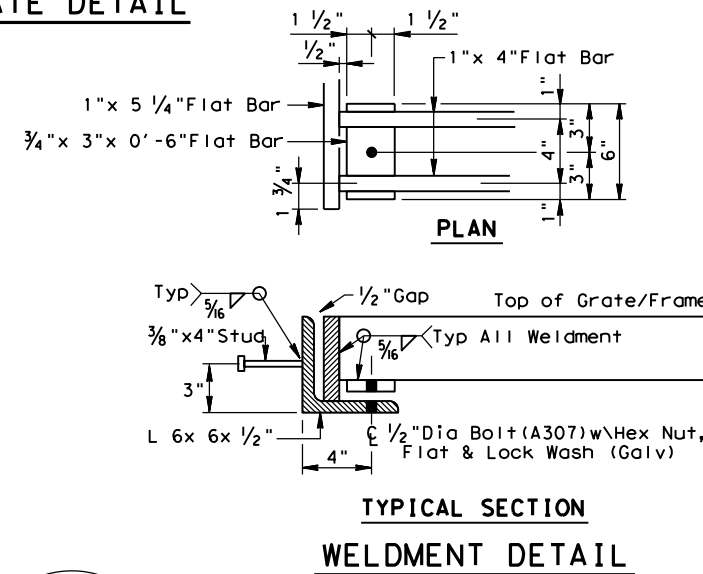
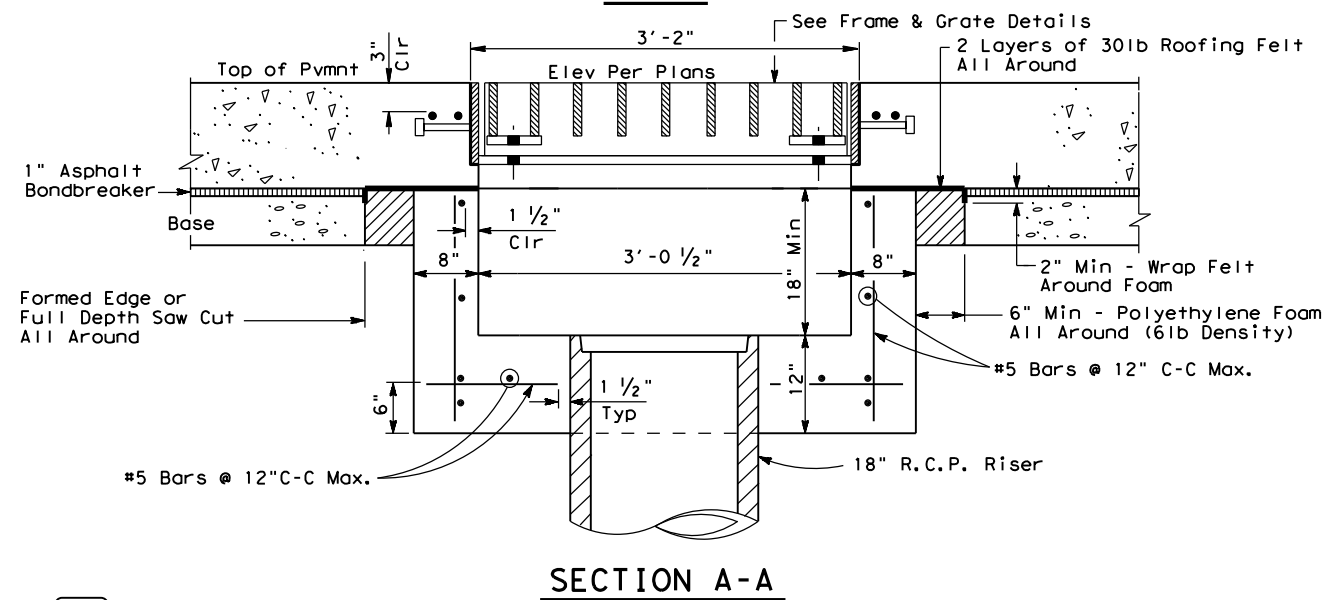


Free Area is 660 in²
 C Frame, Grate & Inlet

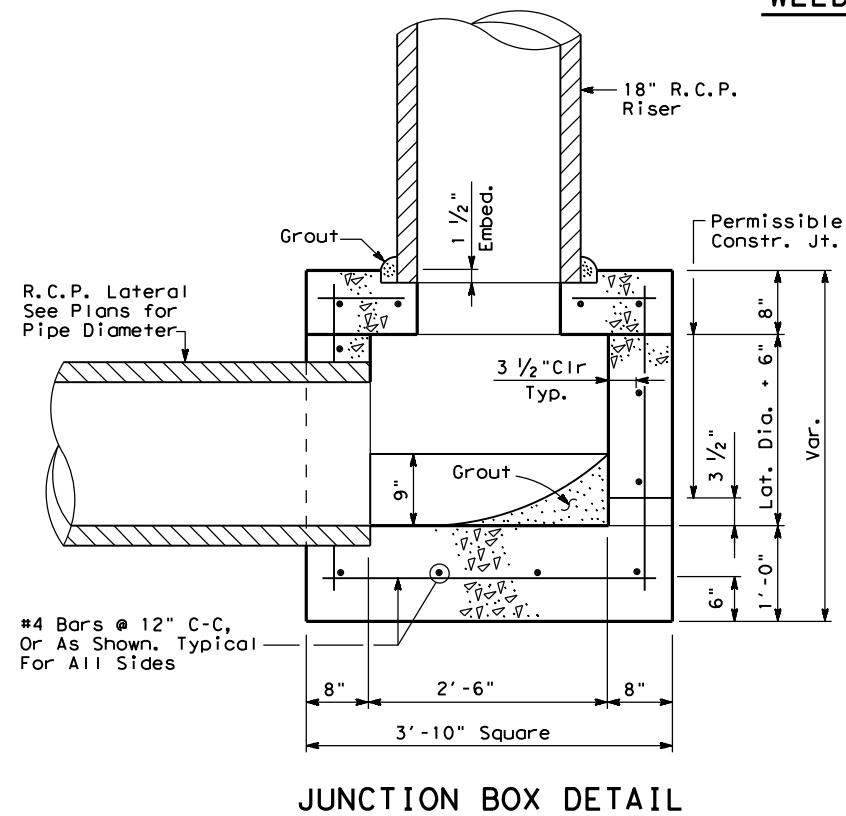
#5 Bars x 4'-0" Spaced
 As Shown With Each Mat
 Of Pavement Reinforcing



GENERAL NOTES:
 Provide ASTM-A36 Steel For All Grate Components. Galvanize All Grate Components Per Item 445.
 The Cost Of Furnishing And Installing Frames, Grates, Additional Pavement Reinforcing, Roofing Felt And Poly-ethylene Foam Is Subsidiary To The Unit Price Bid For The Type Of Inlet Selected.
 Provide Class "C" Concrete for CIP or Class "H" Concrete for Precast Elements With Modifications Per Item 465. Provide Min f'c=3,600psi. Provide Grade 60 Reinforcing Steel.
 Provide Grade 60 Reinforcing Steel.
 Shop Drawings Will Be Required For Precast Construction Of Inlets.



① When Mechanically Stabilized Earth (MSE) Retaining Walls Are Used, Do Not Omit Reinforcing Strips In The Vicinity Of The Inlet. These Strips Shall Be Adjusted Or Repositioned To Clear Inlets In Accordance With Wall Manufacturer's Recommendations.



FOR TRAFFIC LOADS

Texas Department of Transportation		Bridge Houston District Standard	
INLET TYPE AZR			
HIL-AZR-25 (HOU)			
FILE: HIL-AZR-25 (HOU).DGN	DN: TxDOT	CK: TxDOT	OW: TxDOT
© TxDOT May 2025	CONT	SECT	JOB
REVISIONS		HIGHWAY	
05/2025: 2024 Spec Updates			
DIST	COUNTY	SHEET NO.	

d = Diameter