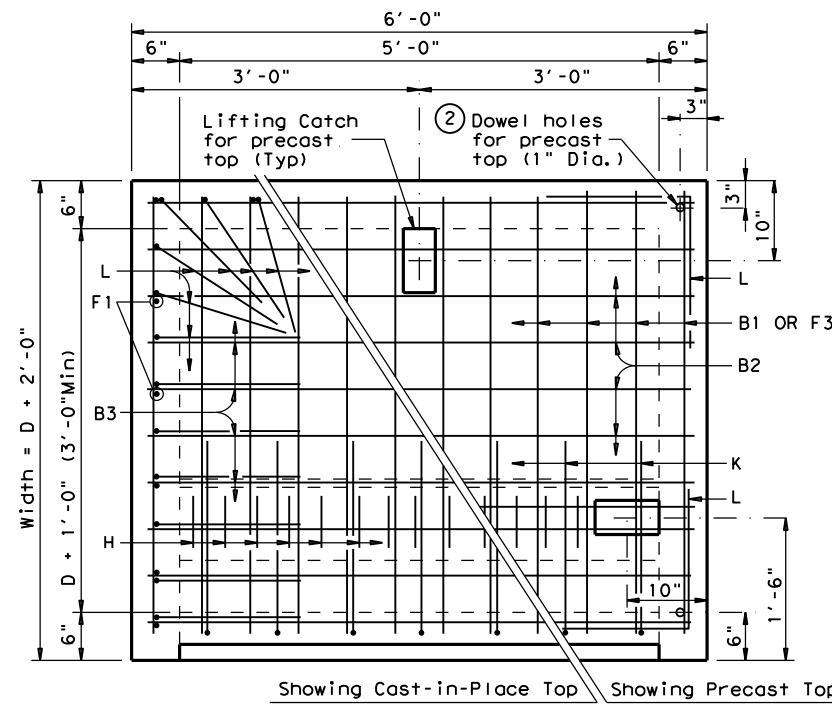


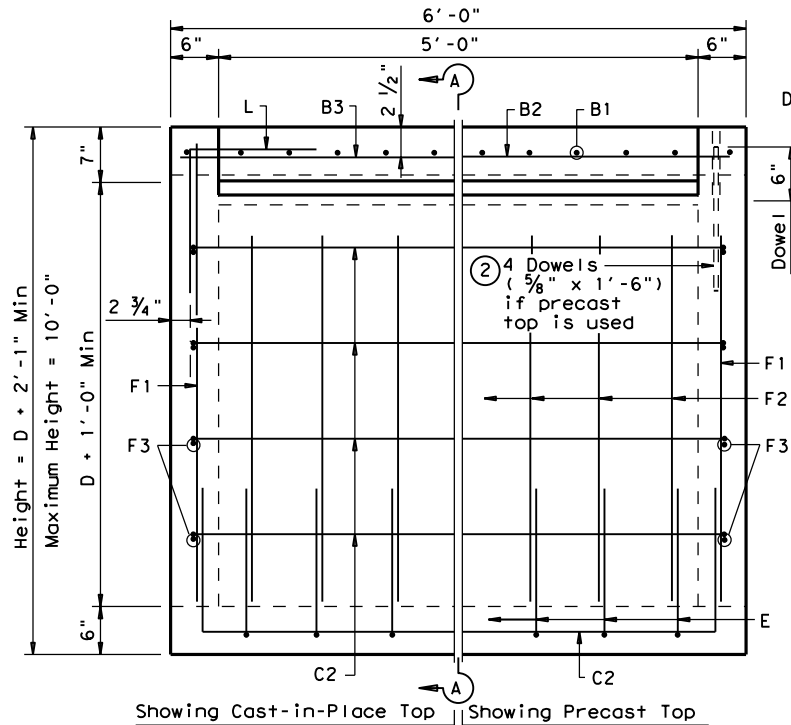
DISCLAIMER: This standard is governed by the "Texas Engineering Practice Act". No warranty of any kind is made by TxDOT for any purpose whatsoever. TxDOT assumes no responsibility for the conversion of this standard to other formats or for incorrect results or damages resulting from its use.

DATE: FILE:

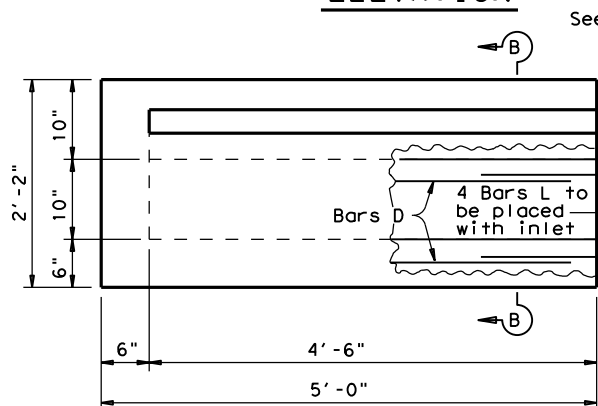


Showing Cast-in-Place Top Showing Precast Top

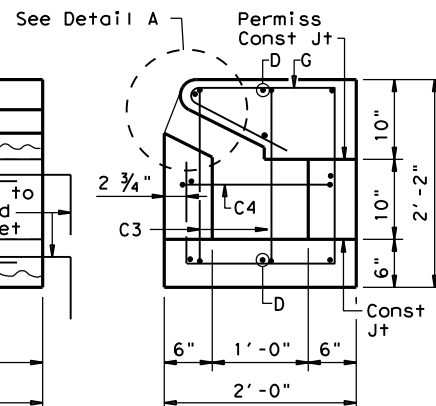
PLAN



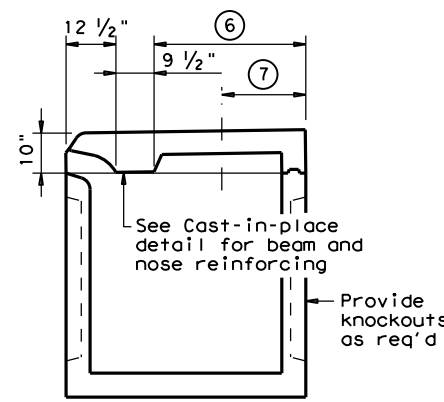
ELEVATION



EXTENSION ELEVATION

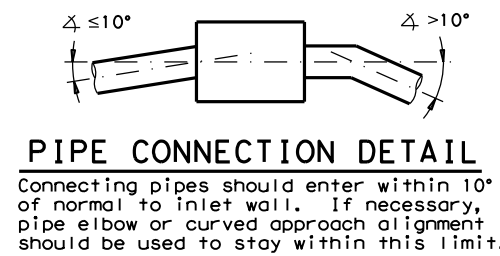


SECTION B-B



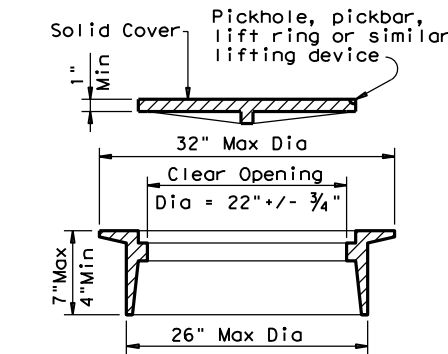
PREFABRICATED INLET

- ⑥ For reinforcing steel and dimensions not shown, see fabricator's shop drawings. Structure shall be of the size required to accommodate size of pipe shown elsewhere in the plans. Length of inlet = 6'-0"
- ⑦ 1'-6" Min, 1'-9" Max Adjust placement of Ring and Cover as necessary to avoid conflict with Bars H.



PIPE CONNECTION DETAIL

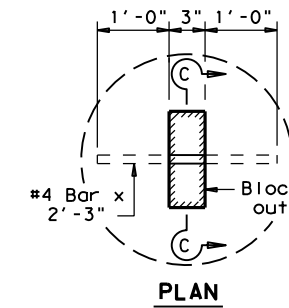
Connecting pipes should enter within 10° of normal to inlet wall. If necessary, pipe elbow or curved approach alignment should be used to stay within this limit.



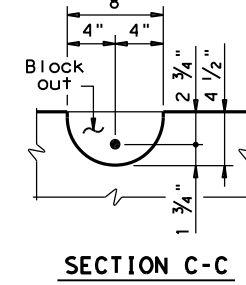
RING AND COVER DETAILS

⑩ EJ V-1418 or Neenah No R-1930-24

- ① Block out to accommodate extension if used and to place 4 Bars L.
- ② If precast top is used, provide 4 ~ 5/8" dia x 1'-6" smooth bars in inlet walls for 1" dia holes
- ⑧ Ladder rung is Ductile Iron, Aluminum or Cast Iron.
- ⑩ Alternative ring and covers may only be used if approved by Engineer. Refer to the "TxDOT approved Cast Iron Product Sheets" located on the TxDOT Bridge Standards website for alternatives to be approved.

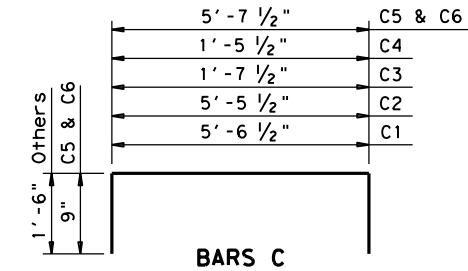


PLAN

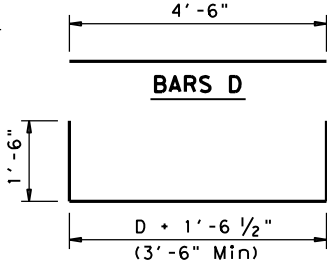


SECTION C-C

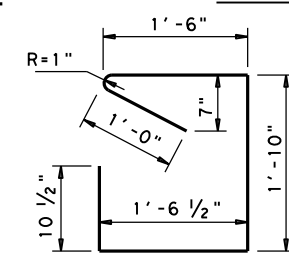
LIFTING CATCH



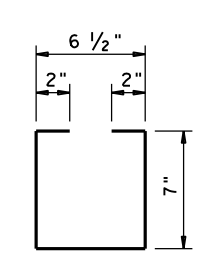
BARS C



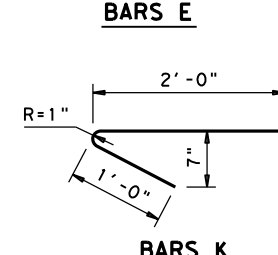
BARS D



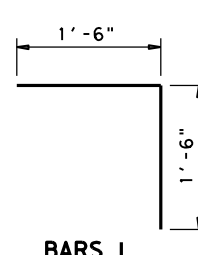
BARS G



BARS H



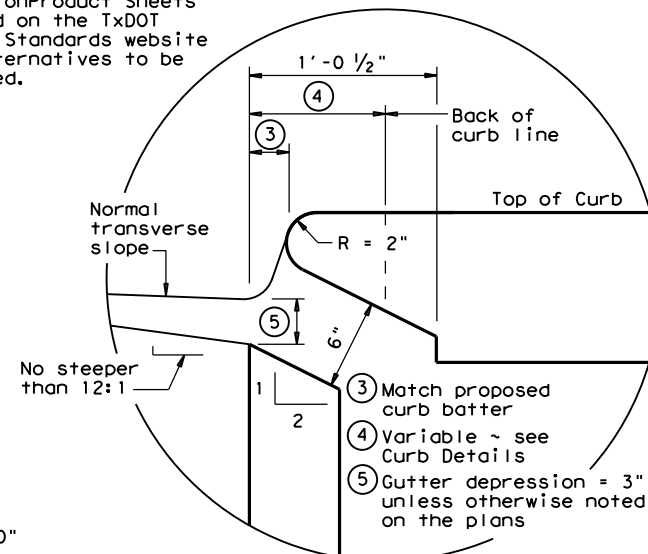
BARS K



BARS L

GENERAL NOTES:

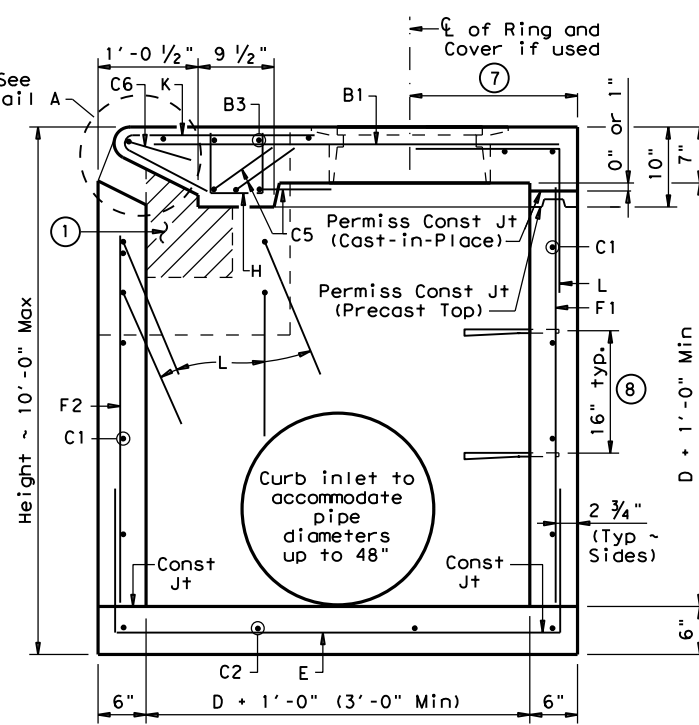
No alternate designs nor alternate details shall be permitted for precast or cast in place inlets. Quantities shown herein are for Contractor's information only. Unless otherwise shown in the plans, payment will be made for each inlet of the type specified and for each extension. Each five foot curb opening of extension is considered "one extension" regardless of whether placed monolithically or precast. Extension length shall be in multiples of 5 feet. Engineer has the option of specifying cast-in-place top with ring and cover or removable precast top as specified elsewhere in plans. Shop drawings will be required for Precast construction of inlets. In areas of conflict between reinforcing steel, blockouts, pipes, anchor bolts or other reinforcing steel, the reinforcement shall be bent or adjusted to clear as directed by the Engineer. Ring and cover shall conform to the requirements of AASHTO M 306-10, "Standard Specification for Drainage, Sewer, Utility, and Related Castings". Materials shall conform to ASTM A48, Class 35B for gray iron castings or ASTM A536, Grade 65-45-12 for ductile iron castings. Aluminum alloy castings shall not be permitted. Provide Class "C" Concrete for CIP or Class "H" Concrete for Precast Elements With Modifications Per Item 465. Provide Min f'c=3,600psi. Provide Grade 60 Reinforcing Steel.



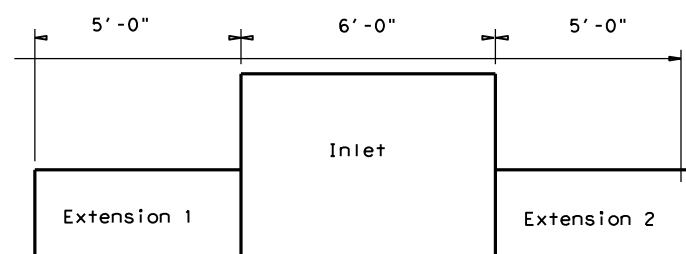
DETAIL A

INSTALL A 3 FT. (HORIZ.) x 6 IN. (VERT.) OPENING ON THE BACK OF THE INLET WHEN SPECIFIED ELSEWHERE ON THE PLANS. MOVE STEPS AS NEEDED. NO REINFORCING ON OPENING/ON 2 IN. ADJACENT TO OPENING. DESIGNERS: CLARIFY FLOWLINE OF OPENING AND INCLUDE OPENING IN HYDRAULIC CALCULATIONS.

SECTION A-A



SECTION A-A



EXTENSION PLACEMENT

Note: If more than one extension is required, they should be located as indicated above. No slope is required in flowline of extension.

REINF STEEL

Bar	Size	Spacing
B1	#4	6"
B2	#5	6"
B3	#4	6"
C1-C2	#4	12"
C3-C4	#4	⑨
C5	#6	⑨
C6	#4	⑨
D	#4	⑨
E	#4	12"
F1-F3	#4	12"
G	#4	6"
H	#3	4"
K	#4	9"
L	#4	6"

⑨ As shown

Texas Department of Transportation Bridge Houston District Standard

CURB INLET TYPE C (WITH OR WITHOUT EXTENSION)

HIL-C-25 (HOU)

FILE: HIL-C-25 (HOU).DGN	DN: TxDOT	CK: TxDOT	DW: TxDOT	CK: TxDOT
© TxDOT May 2025	CONT	SECT	JOB	HIGHWAY
REVISIONS				
02/2010: Added note concerning opening on the back of inlet				
10/2014: Revised Note 10				
09/2025: 2024 Spec Updates				
Added Note 10 for alternate flow & cover				
DIST	COUNTY	SHEET NO.		

D = Diameter
R = Radius