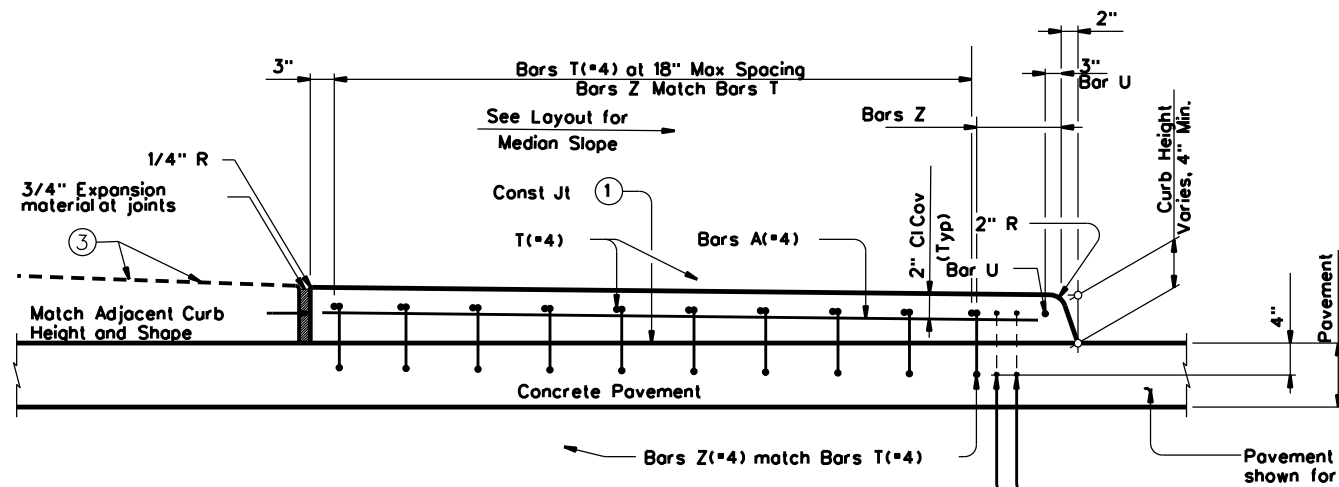
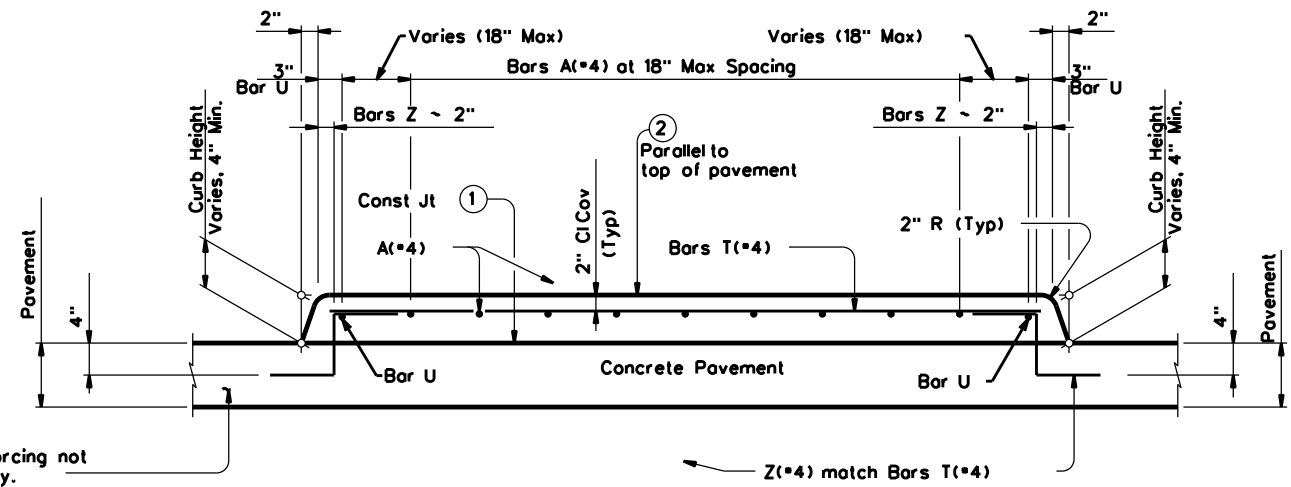


DISCLAIMER: The use of this standard is governed by the "Texas Engineering Practice Act". No warranty of any kind is made by TxDOT for any purpose whatsoever. TxDOT assumes no responsibility for the conversion of this standard to other formats or for incorrect results or damages resulting from its use.

DATE:
FILE:

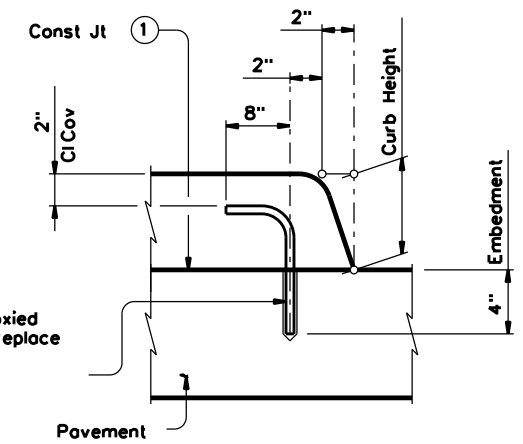


SECTION A-A



SECTION B-B

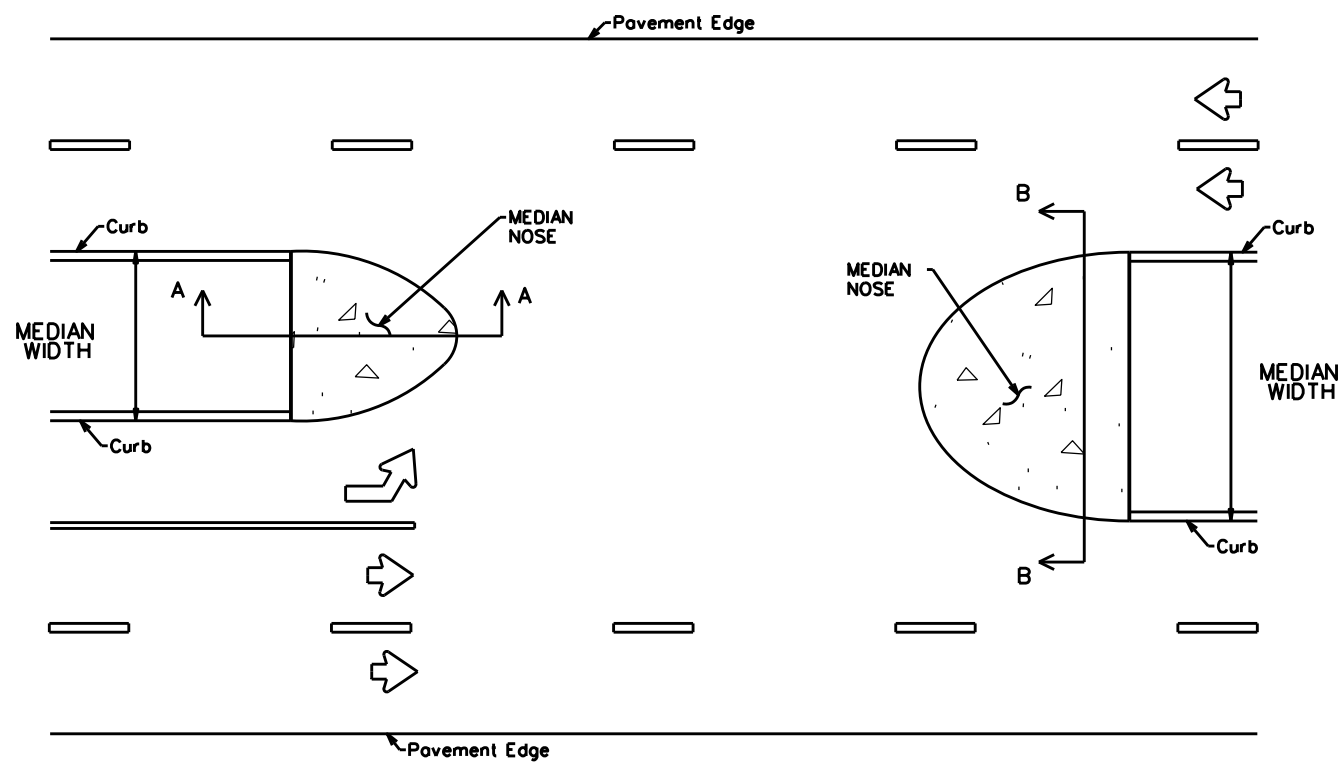
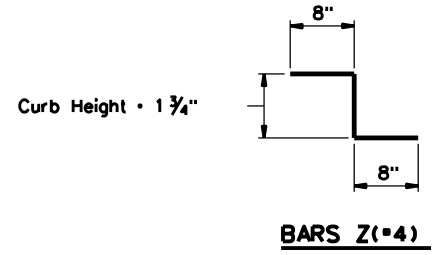
- ① Provide broom finish to top of pavement where raised median area is defined.
- ② Unless noted otherwise on the pavement details.
- ③ Unless otherwise directed, place concrete riprap over pavement or base. If not over pavement or base, place sod or seed.



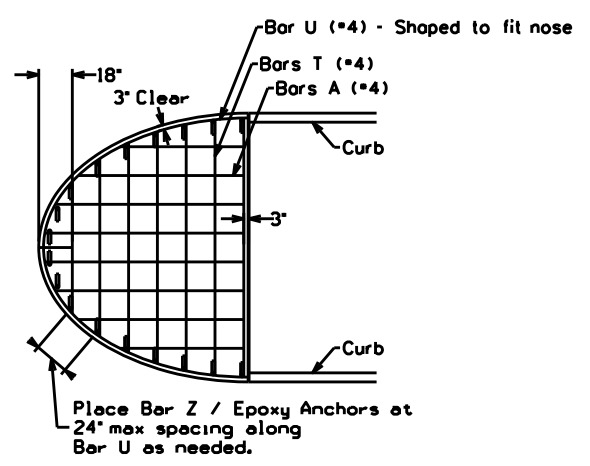
EA(*4) ~ Optional epoxied anchors EA(*4) can replace Bars Z(*4) at the contractor's option.

OPTIONAL EPOXY ANCHORS

Embed EA(*4) bar into concrete with a Type III (Class C) epoxy meeting the requirements of DMS-6100, "Epoxyes and Adhesives". Follow manufacturer's directions for installing the epoxied anchor bars.



PLAN



REINFORCING

MATERIAL NOTES:
Provide Grade 60 reinforcement. Welded wire reinforcement (WWR) meeting ASTM A497 of equivalent size and spacing may be substituted for Bars A and Bars T.

Epoxy coat reinforcement if pavement reinforcement is required to be epoxy coated.

DESIGNER NOTES:
Provide Median Slope in Design Layouts.

		Houston District Standard	
MEDIAN NOSE DETAILS			
MEDNS-25 (HOU)			
FILE: MEDNS-25 (HOU).dgn	DN: TXDOT	CK: TXDOT	DW: TXDOT
© TXDOT February 2025	CONT	SECT	JOB
REVISIONS			HIGHWAY
02-25: 2024 Spec Updates	DIST	COUNTY	SHEET NO.