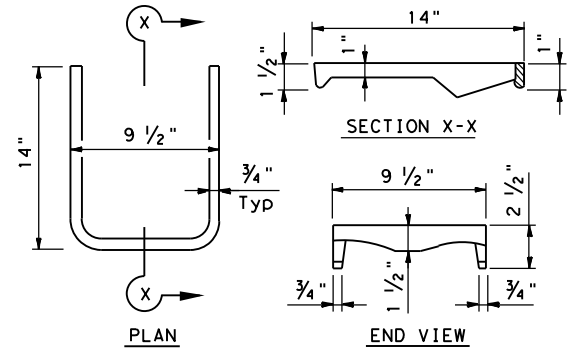
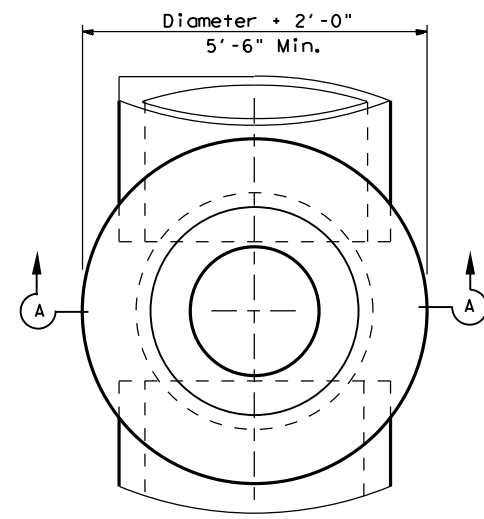
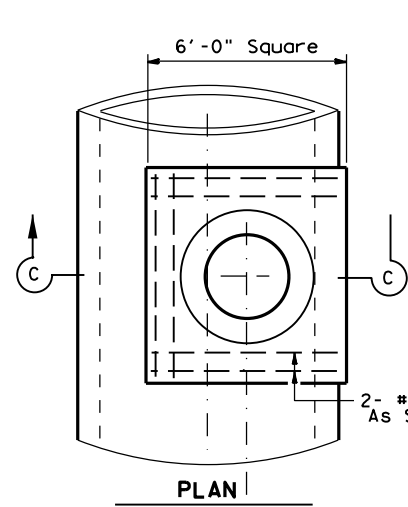


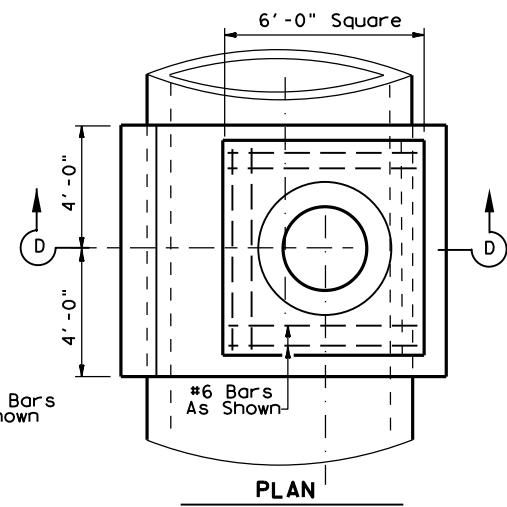
DISCLAIMER: This standard is governed by the "Texas Engineering Practice Act". No warranty of any kind is made by TxDOT for any purpose whatsoever. TxDOT assumes no responsibility for the conversion of this standard to other formats or for incorrect results or damages resulting from its use.



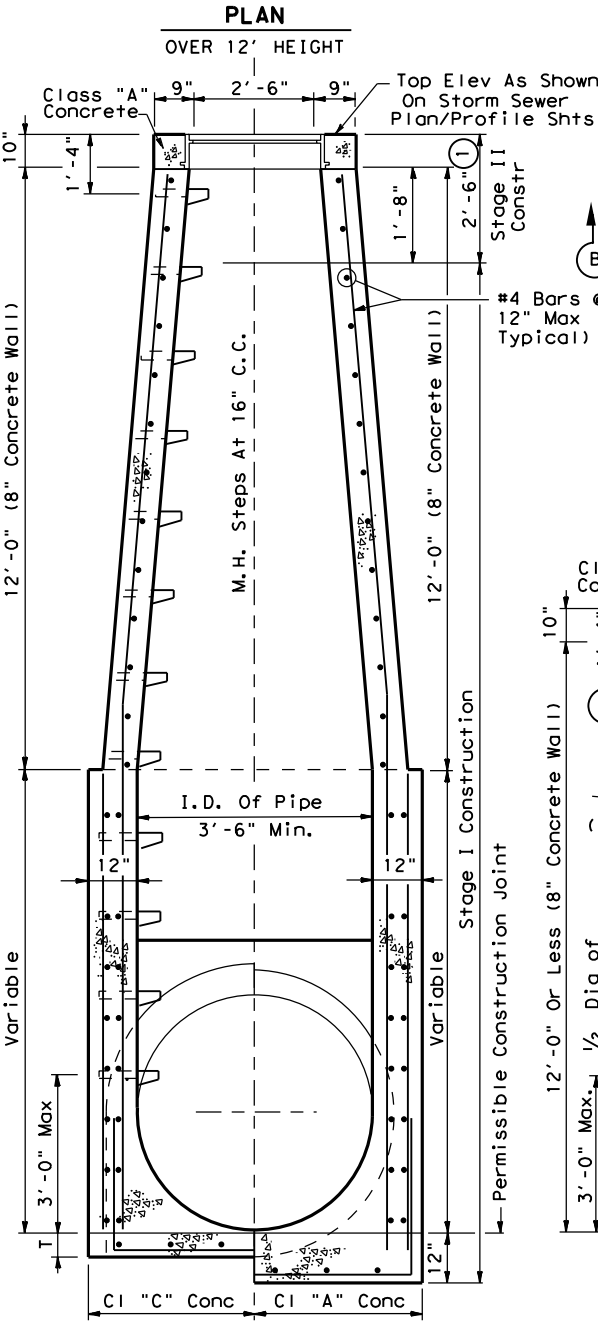
**CAST IRON MANHOLE STEPS**  
(In Stock Locally)



**MONOLITHIC SEWERS**

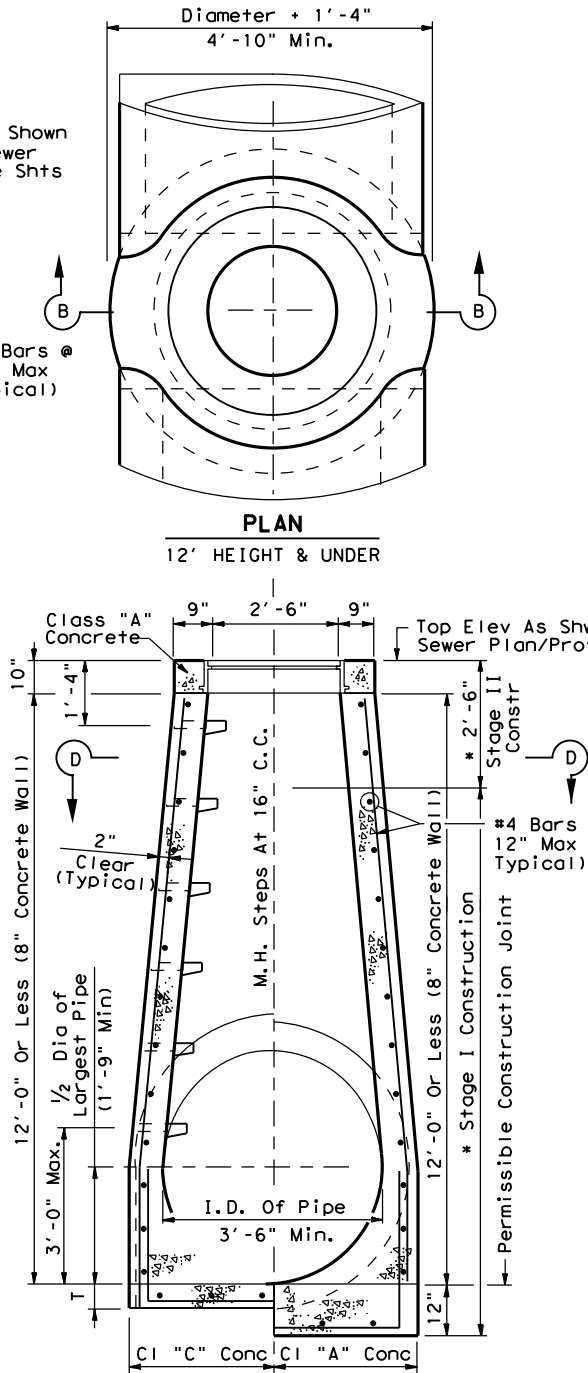


**PRECAST PIPE SEWERS**



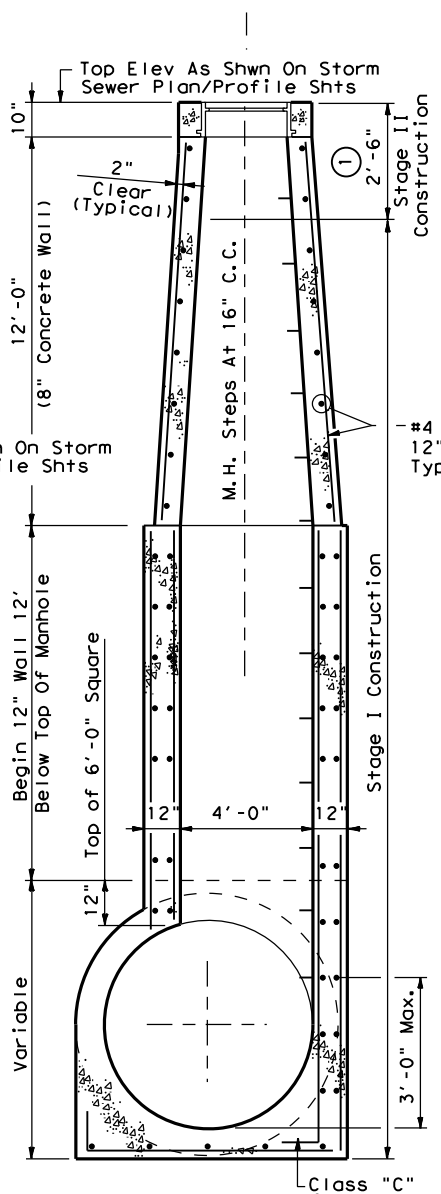
**SECTION A-A**

**MANHOLE - TYPE A**  
FOR PIPES 54" AND SMALLER



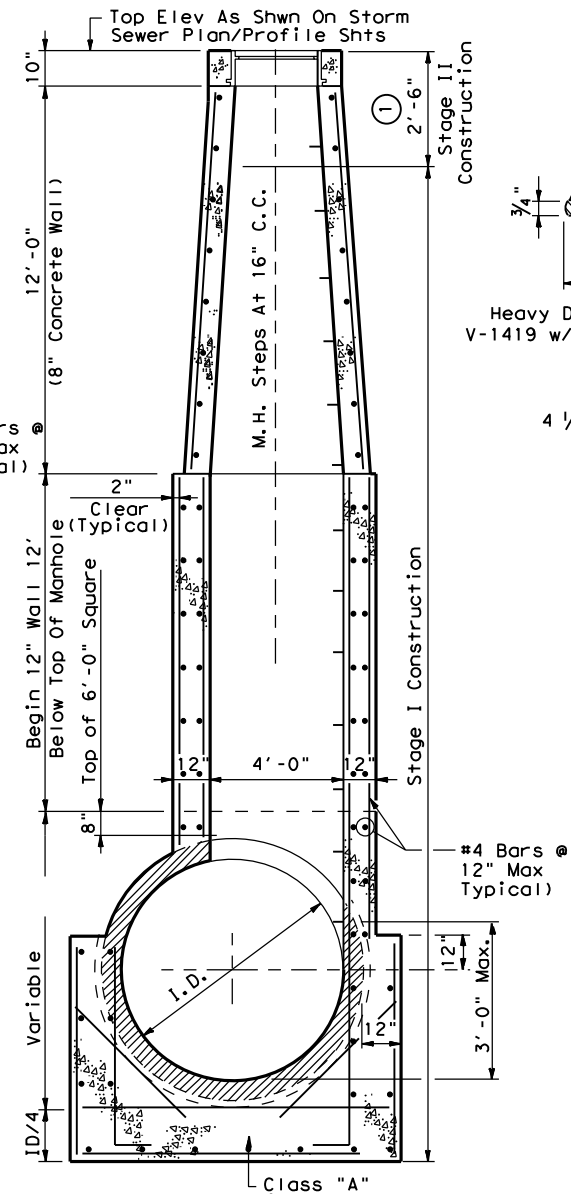
**SECTION B-B**

**MANHOLE - TYPE A**  
FOR PIPES 54" AND SMALLER



**SECTION C-C**

**MANHOLE - TYPE B**  
FOR PIPES 60" AND LARGER

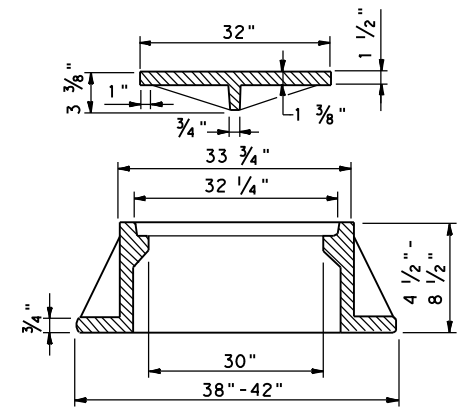


**SECTION D-D**

**MANHOLE - TYPE B**  
FOR PIPES 60" AND LARGER

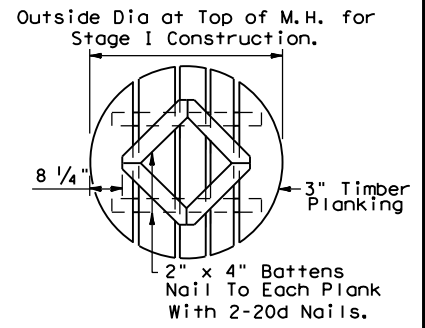
**GENERAL NOTES:**  
See Standard or Detail Sheet For Excavation And Backfill Diagrams.  
All Manholes In Graded Areas Shall Be Built To Stage I And Finished After All Grading Operations Are Substantially Completed.  
"T" Thickness Of Shell Equals That Of Larger Diameter Pipe.  
Optional Monolithic Or Precast Designs Permitted. Optional Designs Shall Be Signed & Sealed By A Licensed Professional Engineer.

- ① Provide Class "C" Concrete for C.I.P or Class "H" Concrete for Precast Elements With Modifications Per Item 465. Provide Min f'c=3,600psi. Provide Grade 60 Reinforcing Steel. But Not Less Than 6 Inches Above Highest Pipe.
- ② Alternative Ring And Covers May Only Be Used If Approved By Engineer. Refer To The "TxDOT Approved Cast Iron Product Sheets" Located On The TxDOT Bridge Standards Website For Alternatives To Be Approved.

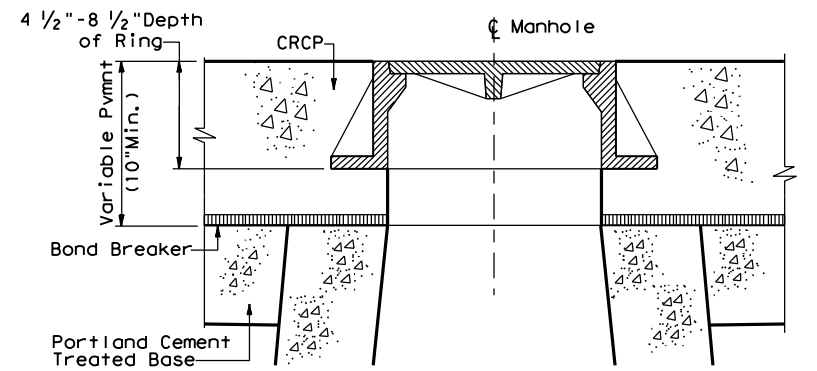


Heavy Duty 30" ID Ring as Required. EJ No. V-1419 w/ribbed cover, Neenah No. R-1930-30

**RING AND COVER ②**



**TEMPORARY TIMBER COVER**



**RING AND COVER CAST MONOLITHICALLY WITH PAVEMENT**

FOR DIRECT TRAFFIC  
Texas Department of Transportation  
Bridge Houston District Standard

**MANHOLES TYPE A & B**

**MH-A/B-25 (HOU)**

FILE: MH-A/B-25 (HOU).DGN	DN: TxDOT	CK: TxDOT	OW: TxDOT	CK: TxDOT
© TxDOT May 2025	CONT	SECT	JOB	HIGHWAY
REVISIONS				
03/2015: MINOR CORRECTIONS				
05/2025: 2024 Spec Updates				
DIST	COUNTY			SHEET NO.

d = Diameter  
R = Radius

DATE:  
FILE: