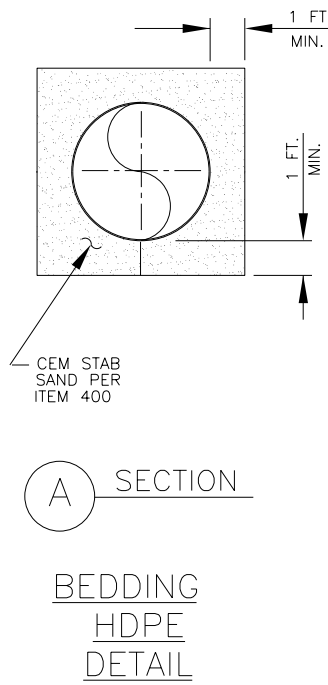
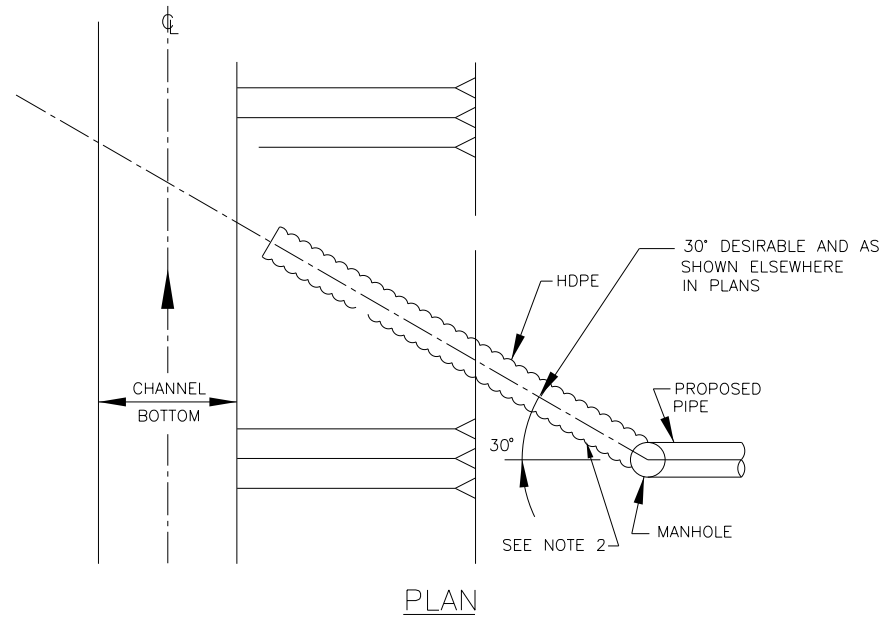
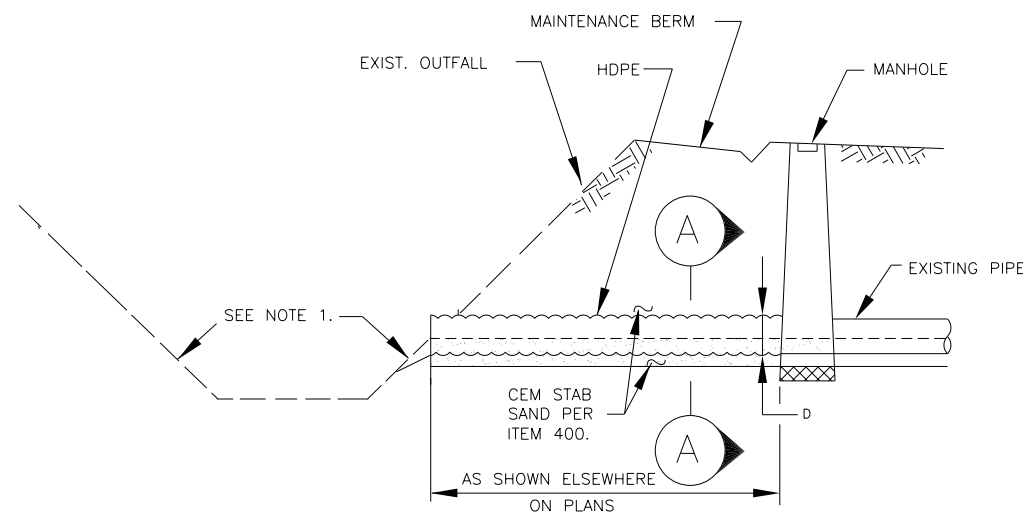
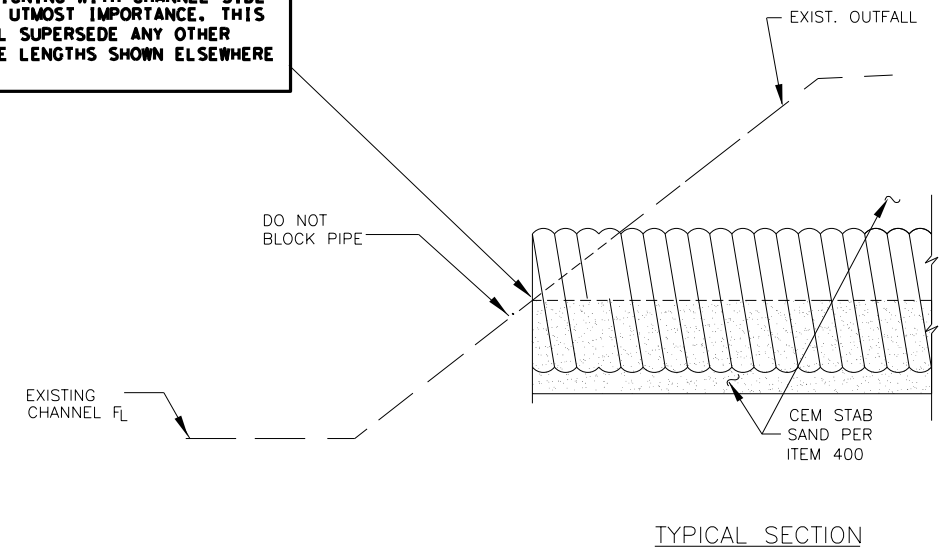


DISCLAIMER: The use of this standard is governed by the "Texas Engineering Practice Act". No warranty of any kind is made by TxDOT for any purpose whatsoever. TxDOT assumes no responsibility for the conversion of this standard to other formats or for incorrect results or damages resulting from its use.



**NOTE AA**  
 THIS DETAIL OF CENTERLINE OF ANY PIPE END ALIGNING WITH CHANNEL SIDE SLOPE IS OF UTMOST IMPORTANCE. THIS DETAIL SHALL SUPERSEDE ANY OTHER DETAILS/PIPE LENGTHS SHOWN ELSEWHERE IN PLANS.



SECTION  
 TYPICAL STORM SEWER OUTFALL  
 STRUCTURE LAYOUT

**STORM SEWER OUTFALL NOTES**

1. SET FLOWLINE OF OUTFALLS AT ELEVATION SPECIFIED ELSEWHERE IN PLANS (TYPICALLY 1 FOOT ABOVE CHANNEL FLOWLINE OR 1 FOOT ABOVE NORMAL WATER SURFACE ELEVATION, WHICHEVER IS HIGHEST)
2. FOR STORM SEWER AND INTERCEPTOR OUTFALL PIPES WITHIN HCFCR ROW, USE TYPE S HDPE IN ACCORDANCE WITH ITEM 468.

**(A)** THESE ARE GENERAL DETAILS AND NOTES. IF THERE ARE ANY DISCREPANCIES BETWEEN THIS STANDARD AND THE DETAILED SEALED DRAINAGE PLANS, THE SEALED PLANS WILL OVERRIDE. THE ONLY EXCEPTION IS NOTE AA ABOVE.

**(B)** DESIGNER TO CONSULT WITH DISTRICT ENVIRONMENTAL SECTION TO DETERMINE IF OUTFALL IS OR IS NOT JURISDICTIONAL. IF JURISDICTIONAL REQUEST ORDINARY HIGH WATER MARK AND CORPS OF ENGINEERS PERMIT FROM ENVIRONMENTAL SECTION FOR ANY WORK BELOW ORDINARY HIGH WATER MARK.

**MINOR OUTFALL DETAILS**  
 (BRAZORIA, FORT BEND, GALVESTON, MONTGOMERY AND WALLER COUNTIES)  
 MOD-25 (HOU)

FILE: MOD-25 (HOU).dgn	DN: TXDOT	CK: TXDOT	DW: TXDOT	CK: TXDOT
© TxDOT February 2025	CONT	SECT	JOB	HIGHWAY
REVISIONS				
02-25: 2024 Spec Updates	DIST	COUNTY	SHEET NO.	

DATE:  
 FILE: