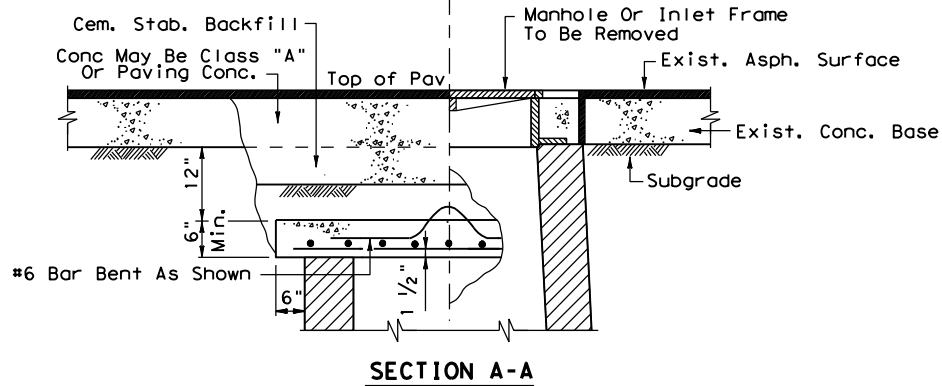
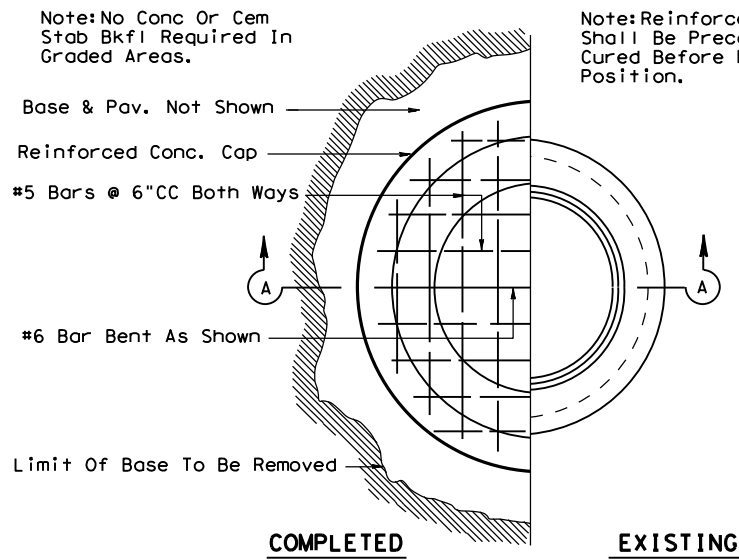
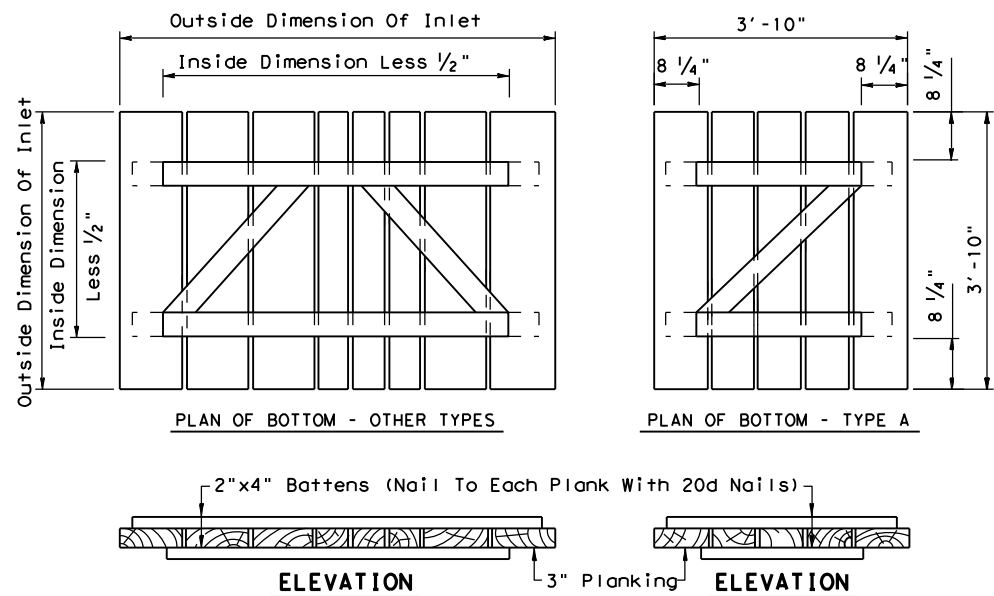


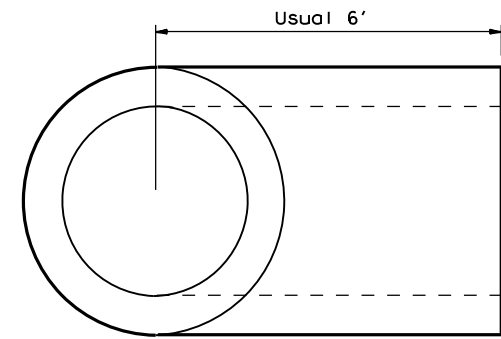
DISCLAIMER: The use of this standard is governed by the "Texas Engineering Practice Act". No warranty of any kind is made by TxDOT for any purpose whatsoever. TxDOT assumes no responsibility for the conversion of this standard to other formats or for incorrect results or damages resulting from its use.



DETAIL SHOWING METHOD OF CAPPING ABANDONED MANHOLES OR INLETS (GRADED OR PAVED AREAS)

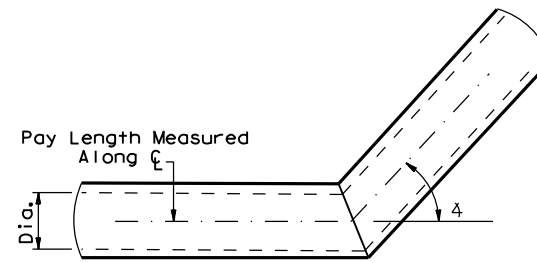


TEMPORARY COVERS FOR ALL TYPES OF INLETS



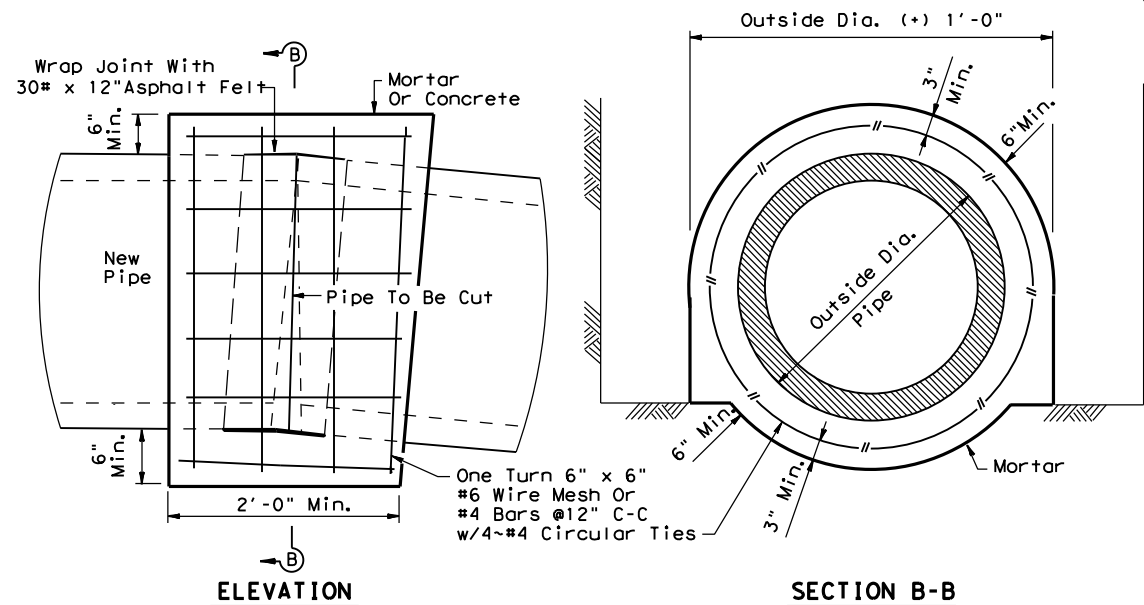
Note: Jointing Material Shall Conform To Requirements Of Item "Reinforced Concrete Pipe." Material For Tees Shall Conform To Requirements Of Item "Reinforced Concrete Pipe." Payment For Tee To Be In Accordance With Item "Reinforced Concrete Pipe."

PRECAST STORM SEWER TEE

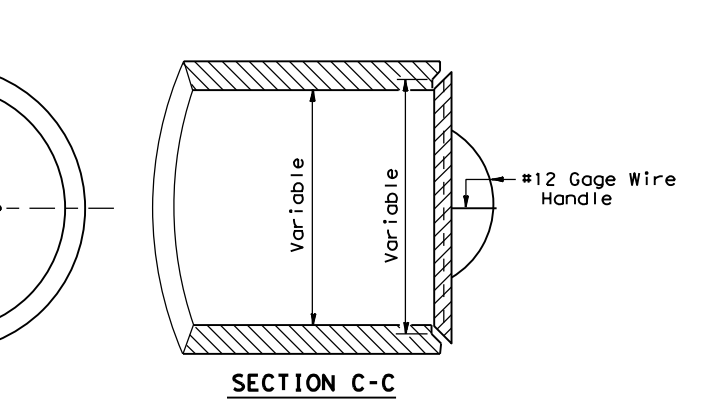


PLAN VIEW BENDING DETAIL

Note: Bending Of Proposed Pipe Sewer Or RCP In A Vertical & /Or Horizontal Plane Shall Be Accomplished By The Use Of A "Pipe Collar" Or A "Precast Elbow", As Approved By The Engineer. Price Of "Pipe Collar" Or, "Precast Elbow" Shall Be Subsidiary To The Unit Prices Bid For Item Reinforced Concrete Pipe. Pay Length Measurement To Be Along Horizontal C & Horizontal Plane Of Pipes.

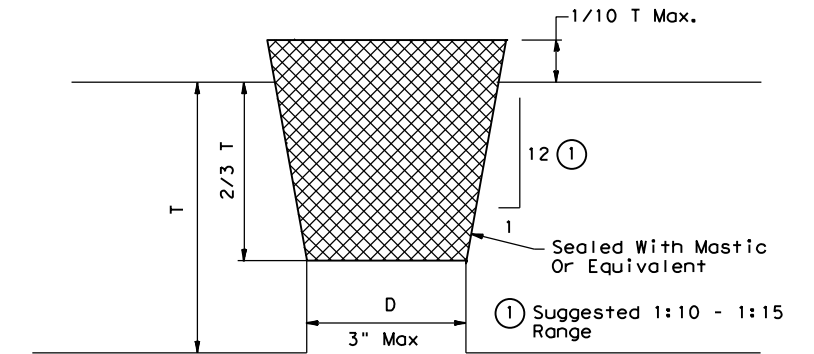


PIPE COLLAR DETAIL
For Horizontal Or Vertical Placement



Note: The Price Of Plug Shall Be Subsidiary To The Unit Bid Price For Pipe Sewer Or RCP. Mortar Joints To Be Used As Directed By The Engineer. Removal Of The Existing Plugs For Storm Sewer Or RCP Conns. Shall Be Considered Incidental To Item "Excavation And Backfill For Structures."

CONCRETE PLUG FOR PIPE
Concrete Plug For End Of Pipe Culvert Or Sewer



T = Wall Thickness On Top Of Box Or Pipe
D = Diameter Of Lifting Hole
Minimum Length Of Plug Is 2/3 T +/-
Minimum Diameter At Bottom Of Plug = D - 1/8"
Maximum 1/10 T Of Plug Not Seated In Lifting Hole

Note: The Plug Shall Be Cast With The Same Taper As The Lifting Hole.
DETAIL OF PLUG FOR LIFTING HOLES IN RCB AND RCP

		Bridge Houston District Standard	
<h2>MISCELLANEOUS SEWER DETAILS</h2>			
MSD-25 (HOU)			
FILE: MSD-25 (HOU), DGN	DN: TXDOT	CK: TXDOT	OW: TXDOT
© TXDOT May 2025	CONT	SECT	JOB
REVISIONS		HIGHWAY	
03/2015: 2014 Specs			
05/2025: 2024 Spec Updates			
DIST	COUNTY	SHEET NO.	

DATE: FILE:

d = Diameter
R = Radius