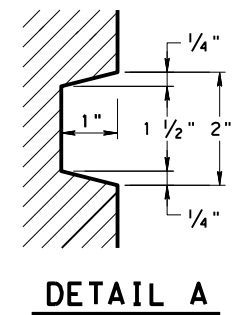
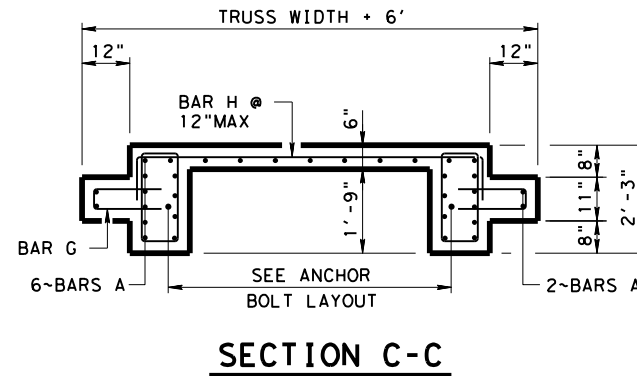
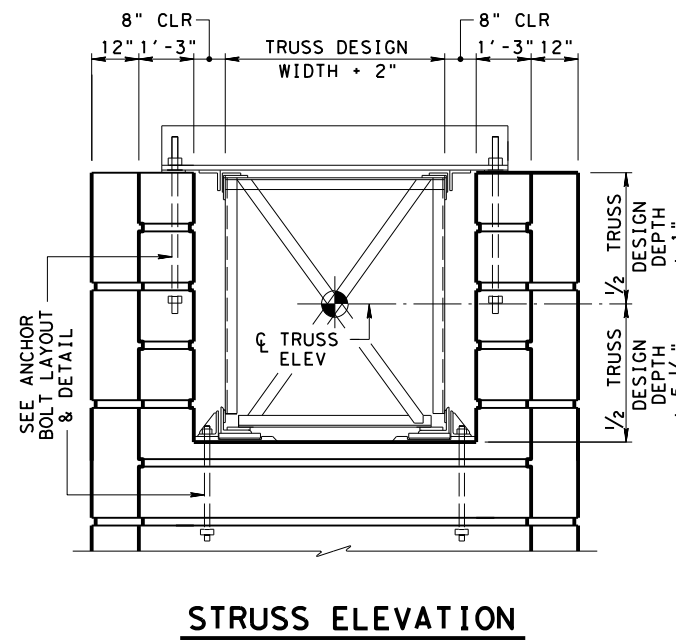
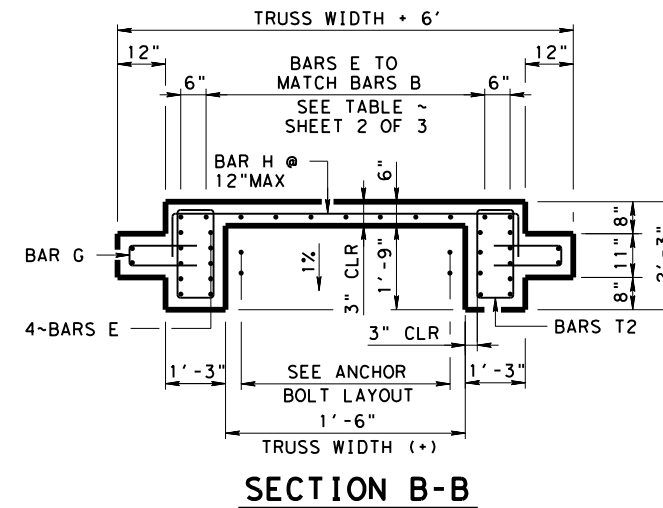
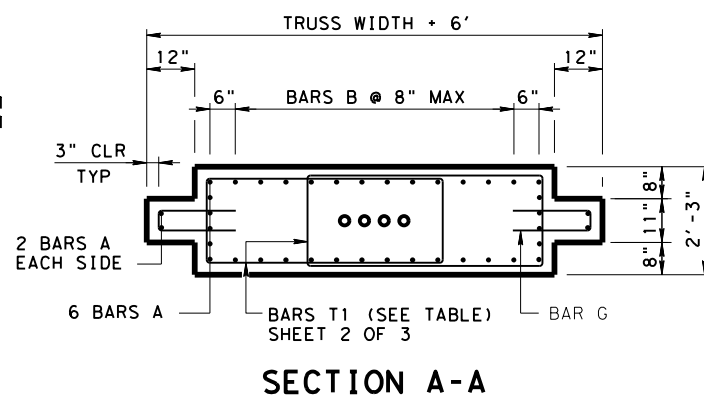
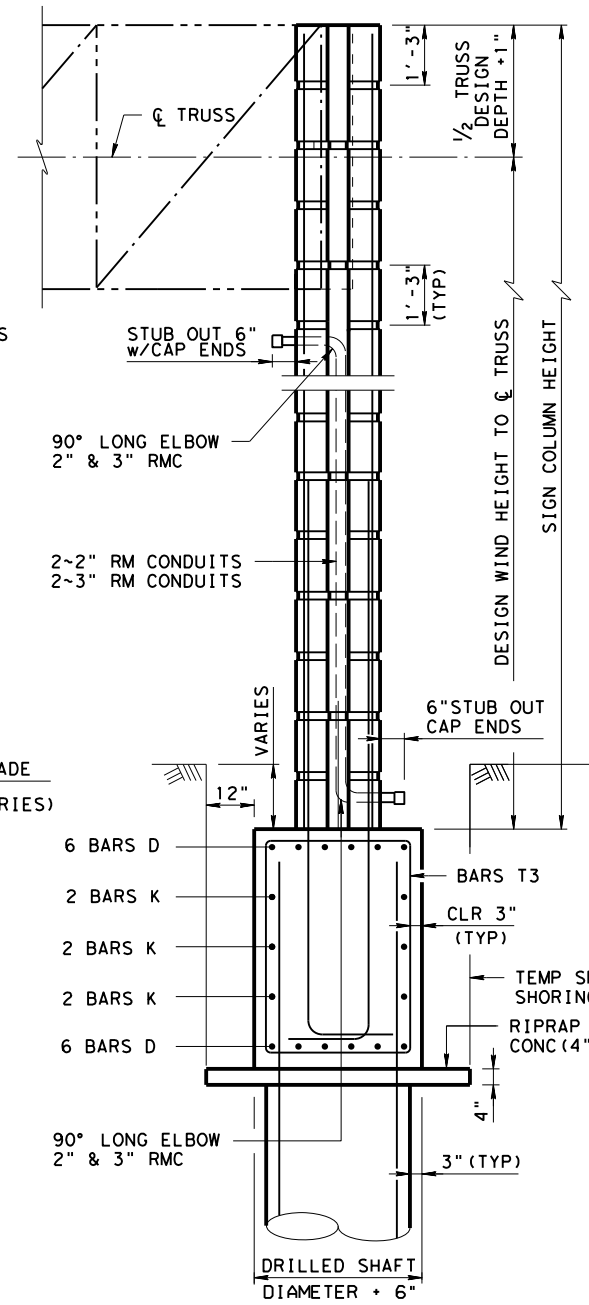
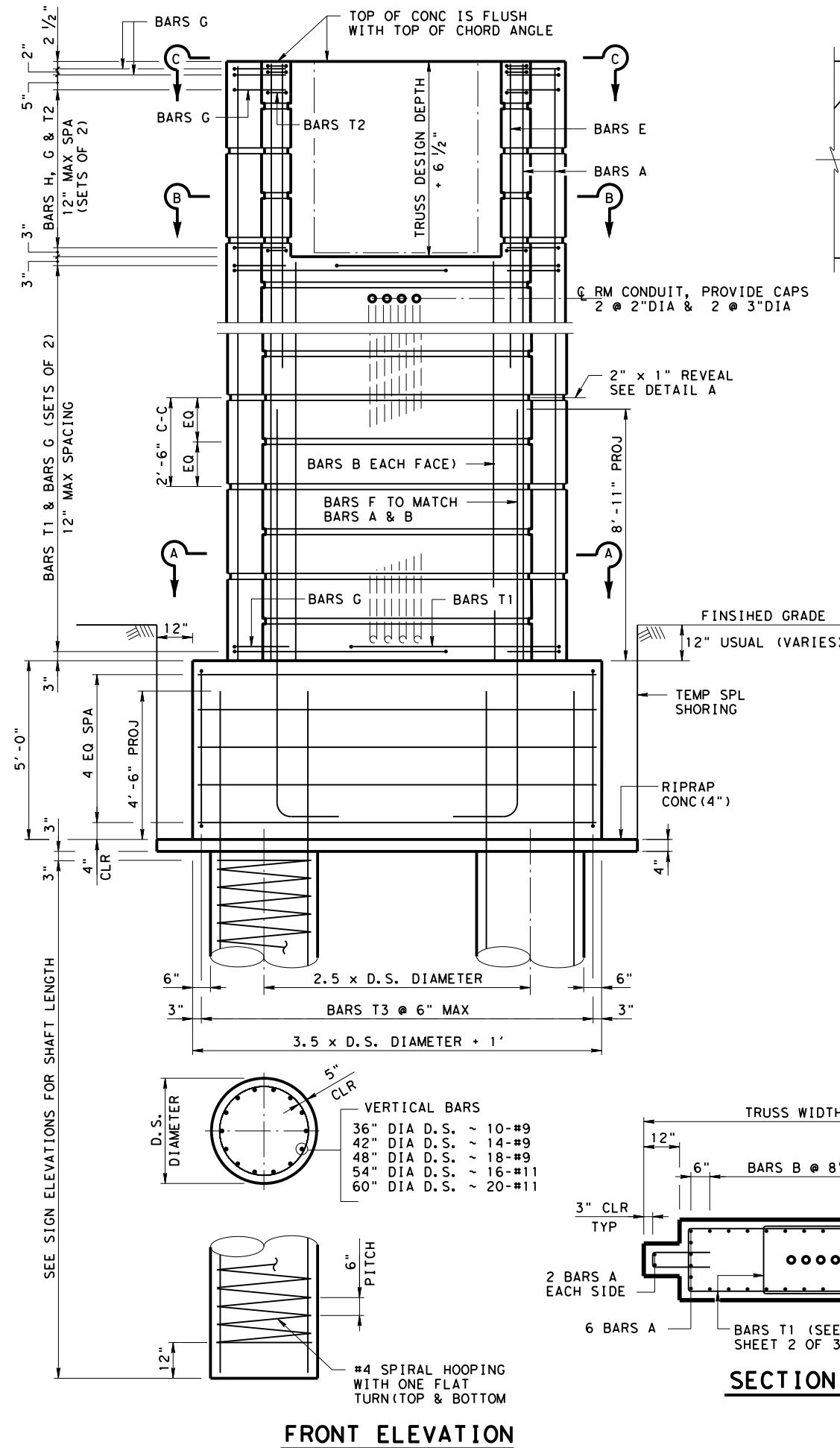


DISCLAIMER: This standard is governed by the "Texas Engineering Practice Act". No warranty of any kind is made by TxDOT for any purpose whatsoever. TxDOT assumes no responsibility for the conversion of this standard to other formats or for incorrect results or damages resulting from its use.

DATE: FILE:



GENERAL NOTES:

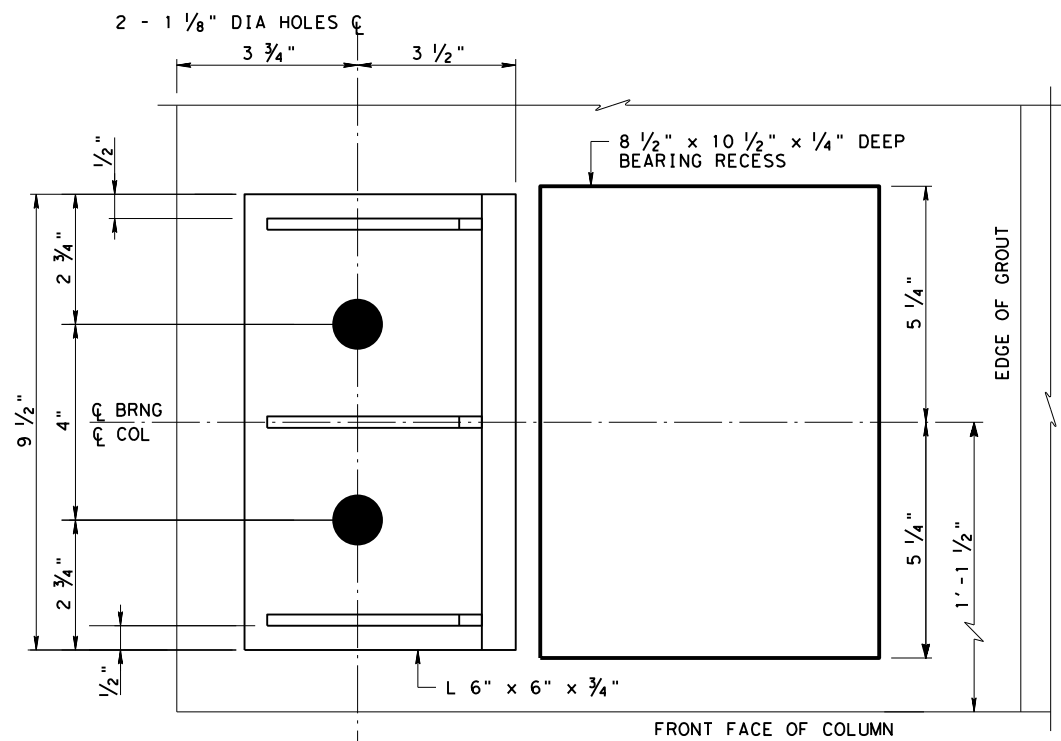
1. CONCRETE SHALL BE CLASS "C" F'c = 3600 psi.
2. ALL REINFORCING SHALL BE ASTM A615 GRADE 60.
3. ALL DIMENSIONS OF THE REINFORCING BARS ARE TO ϕ OF BARS UNLESS OTHERWISE NOTED
4. CHAMFER ALL EXPOSED CORNERS $\frac{3}{4}$ ".
5. ANCHOR BOLT ASSEMBLIES AND ALL STEEL HARDWARE, INCLUDING CONDUIT IN THE COLUMNS ARE INCIDENTAL TO ITEM 650 OVERHEAD SIGN SUPPORTS.
6. ALL ANCHOR BOLTS SHALL BE A193-B7.
7. ALL STEEL HARDWARE SHALL BE GALVANIZED.
8. COMPONENTS OF THE STRUCTURE DESIGNED ACCORDING TO AASHTO LRFD BRIDGE DESIGN SPECIFICATIONS AND /OR AASHTO STANDARD SPECIFICATIONS FOR STRUCTURAL SUPPORTS FOR HIGHWAY SIGNS, LUMINAIRES, AND TRAFFIC SIGNALS.
9. CONCRETE COLUMNS ARE DESIGNED FOR THE EQUIVALENT AREA OF A 10'-0" DEEP SIGN PANEL OVER 100% OF THE SPAN LENGTH. DESIGN INCLUDES 3 POUNDS PER FOOT SQUARED FOR SIGN PANEL AND 20 POUNDS PER FOOT FOR LIGHTS AND 50 POUNDS PER FOOT FOR WALKWAYS OVER 100% OF THE SPAN LENGTH.

OVERHEAD SIGN BRIDGE COLUMN DETAILS
HORIZONTAL SCHEME

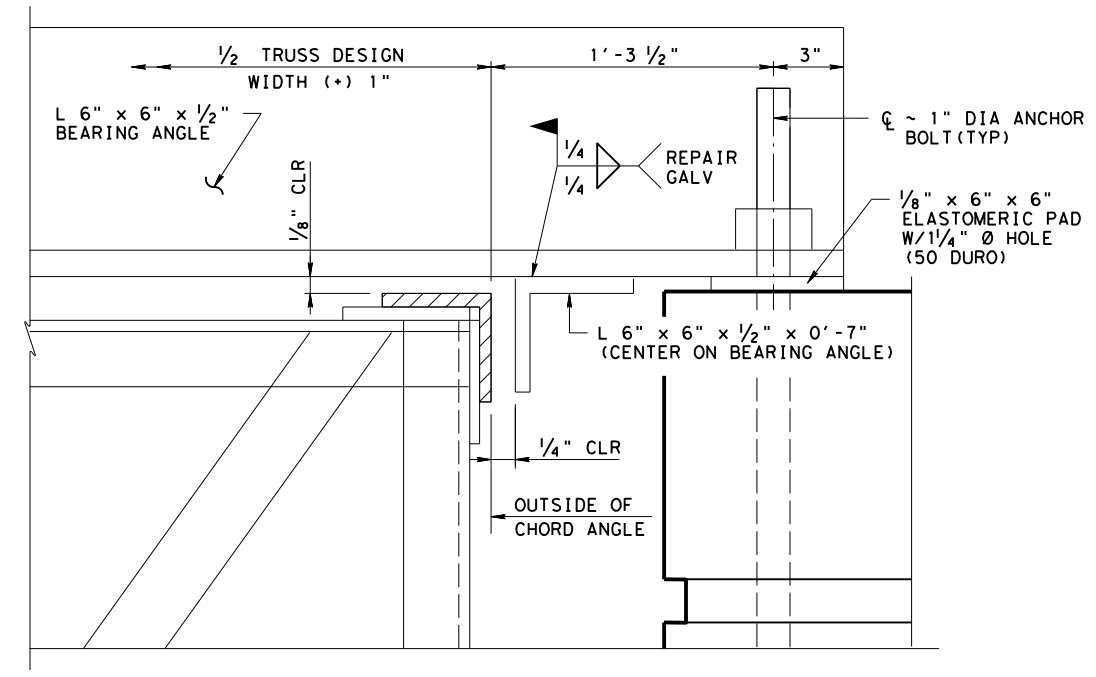
OSB-HS-25 (HOU)

FILE: OSB-HS-25 (HOU). DGN	DN: TXDOT	CK: TXDOT	OW: TXDOT	CK: TXDOT
© TXDOT April 2025	CONT	SECT	JOB	HIGHWAY
REVISIONS				
04/2025: 2024 Spec Updates	DIST	COUNTY	SHEET NO.	
	HOU			

DISCLAIMER: This standard is governed by the "Texas Engineering Practice Act". No warranty of any kind is made by TxDOT for any purpose whatsoever. TxDOT assumes no responsibility for the conversion of this standard to other formats or for incorrect results or damages resulting from its use.

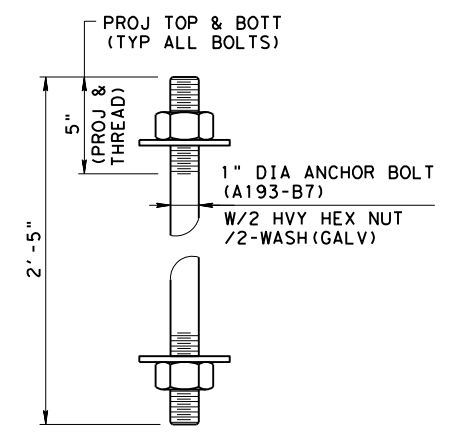


PLAN



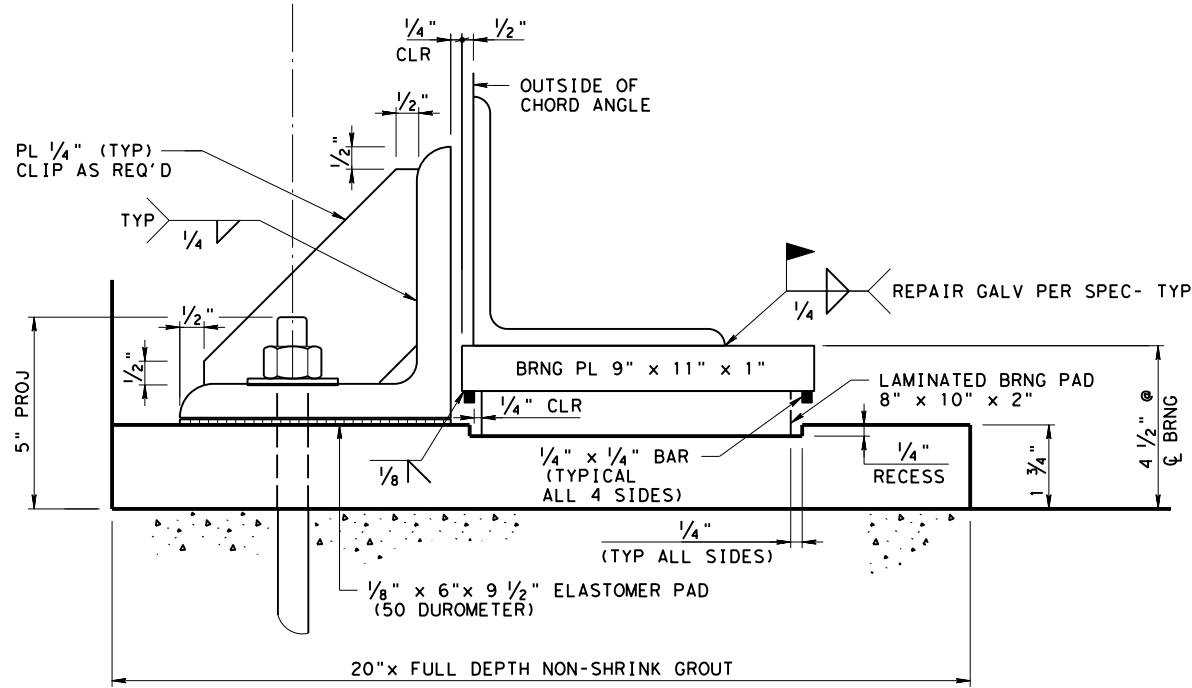
ELEVATION

UPPER LATERAL GUIDE AND BEARING PLATE DETAIL



ANCHOR BOLT DETAIL

6 TOTAL REQ'D PER COLUMN (2 TOP, 4 BOTTOM)
SNUG TIGHTEN ALL ANCHOR BOLT NUTS



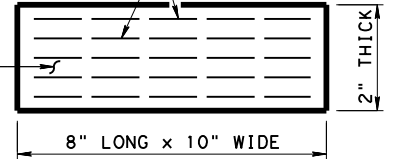
ELEVATION

LOWER LATERAL GUIDE AND BEARING PLATE DETAIL

NO DIRECT PAY FOR ELASTOMERIC PADS OR ANCHOR BOLTS
PAYMENT FOR SIGN BRIDGE TO INCLUDE LATERAL GUIDES

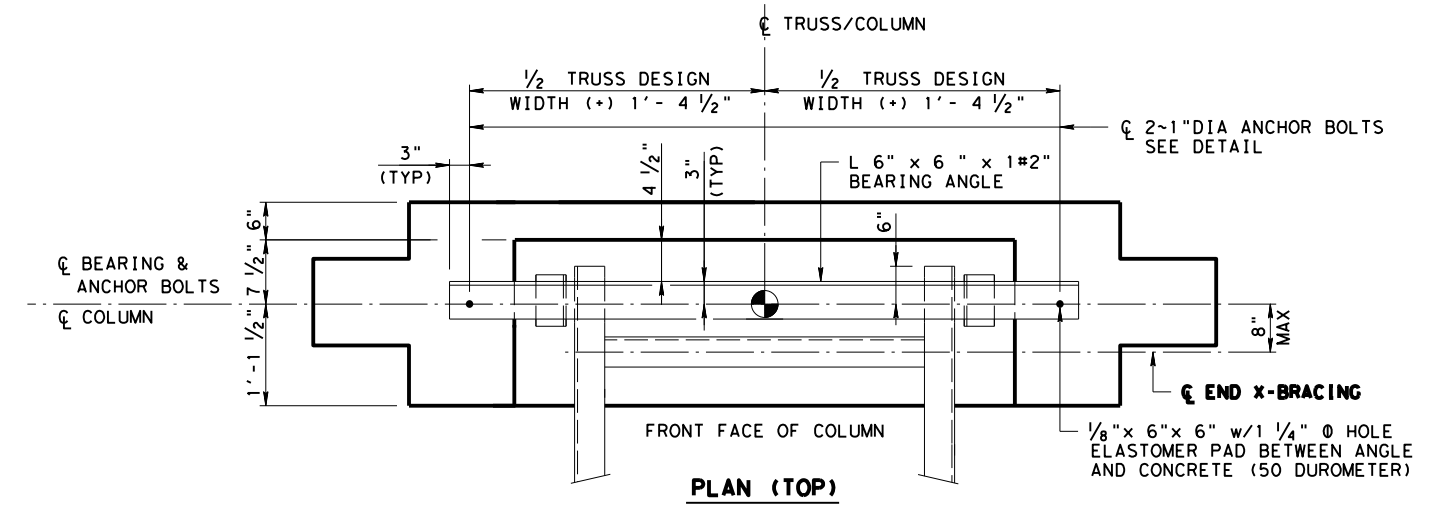
PLACE 0.105" THICK STEEL LAMINATES PARALLEL TO THE BOTTOM SURFACE OF THE PAD

50 DUROMETER ELASTOMER (6 ~ 1/4" THICK LAYERS)

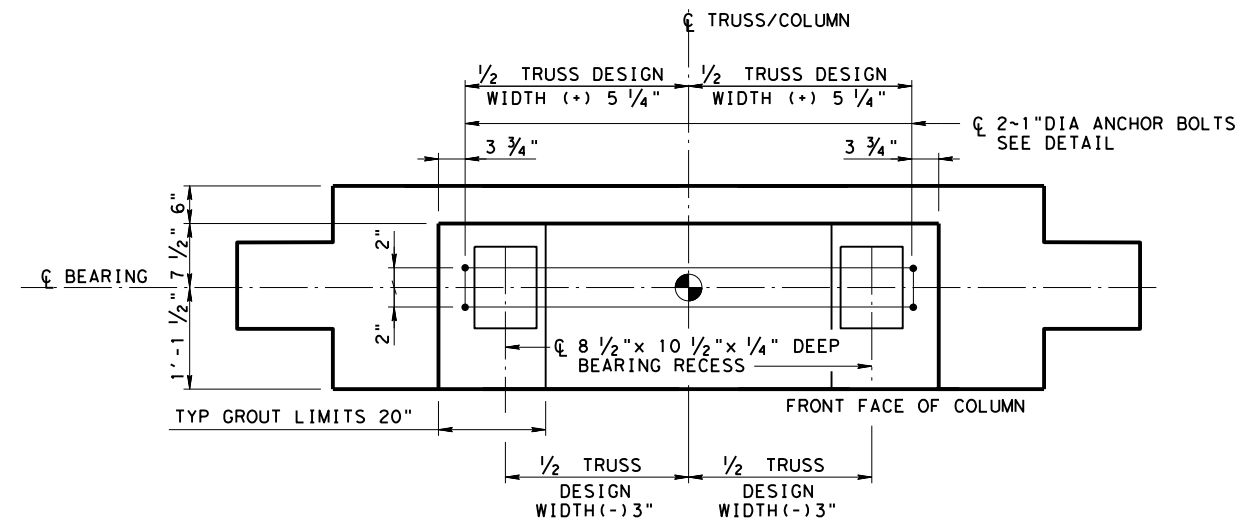


LAMINATED ELASTOMERIC BEARING DETAILS

* THE USE OF POLY ISOPRENE (NATURAL RUBBER) IS NOT ALLOWED



PLAN (TOP)



PLAN (BOTTOM)

ANCHOR BOLT LAYOUT



OVERHEAD SIGN BRIDGE COLUMN DETAILS
HORIZONTAL SCHEME

OSB-HS-25 (HOU)

FILE: OSB-HS-25 (HOU). DGN	DN: TxDOT	CK: TxDOT	DW: TxDOT	CK: TxDOT
© TxDOT April 2025	CONT	SECT	JOB	HIGHWAY
REVISIONS				
04/2025: 2024 Spec Updates	DIST	COUNTY	SHEET NO.	
	HOU			

DATE: FILE:

DISCLAIMER: The use of this standard is governed by the "Texas Engineering Practice Act". No warranty of any kind is made by TxDOT for any purpose whatsoever. TxDOT assumes no responsibility for the conversion of this standard to other formats or for incorrect results or damages resulting from its use.

TABLE OF ESTIMATED FOOTING QUANTITIES (FOR ONE FOOTING)

36" DRILLED SHAFTS

BARS	NO.	SIZE	LENGTH	WEIGHT
D	12	#11	11'-2"	712
K	6	#6	11'-2"	101
T3	23	#5	15'-7"	374
* REINFORCING STEEL				LBS 1,187
TEMPORARY SPECIAL SHORING				SF 241
CL C CONC (SIGN FOOTING)				CY 7.5
RIPRAP CONC (4IN)				CY 0.9

TABLE OF ESTIMATED FOOTING QUANTITIES (FOR ONE FOOTING)

42" DRILLED SHAFTS

BARS	NO.	SIZE	LENGTH	WEIGHT
D	12	#11	12'-11"	824
K	6	#6	12'-11"	116
T3	27	#5	16'-7"	467
* REINFORCING STEEL				LBS 1,407
TEMPORARY SPECIAL SHORING				SF 269
CL C CONC (SIGN FOOTING)				CY 9.8
RIPRAP CONC (4IN)				CY 1.1

TABLE OF ESTIMATED FOOTING QUANTITIES (FOR ONE FOOTING)

48" DRILLED SHAFTS

BARS	NO.	SIZE	LENGTH	WEIGHT
D	12	#11	14'-8"	935
K	6	#6	14'-8"	132
T3	30	#5	17'-7"	550
* REINFORCING STEEL				LBS 1,617
TEMPORARY SPECIAL SHORING				SF 298
CL C CONC (SIGN FOOTING)				CY 12.5
RIPRAP CONC (4IN)				CY 1.4

TABLE OF ESTIMATED FOOTING QUANTITIES (FOR ONE FOOTING)

54" DRILLED SHAFTS

BARS	NO.	SIZE	LENGTH	WEIGHT
D	12	#11	16'-5"	1,047
K	6	#6	16'-5"	148
T3	34	#5	18'-7"	659
* REINFORCING STEEL				LBS 1,854
TEMPORARY SPECIAL SHORING				SF 326
CL C CONC (SIGN FOOTING)				CY 15.5
RIPRAP CONC (4IN)				CY 1.6

TABLE OF ESTIMATED FOOTING QUANTITIES (FOR ONE FOOTING)

60" DRILLED SHAFTS

BARS	NO.	SIZE	LENGTH	WEIGHT
D	12	#11	18'-2"	1,158
K	6	#6	18'-2"	164
T3	37	#5	19'-7"	756
* REINFORCING STEEL				LBS 2,078
TEMPORARY SPECIAL SHORING				SF 355
CL C CONC (SIGN FOOTING)				CY 18.8
RIPRAP CONC (4IN)				CY 1.9

* DOWEL BARS F ARE INCLUDED WITH SIGN COLUMN QUANTITIES

TABLE OF ESTIMATED COLUMN QUANTITIES (FOR ONE COLUMN)

4.5' x 4.5' TRUSS

BARS	NO.	SIZE	LENGTH	WEIGHT
A	16	#11	29'-10"	2,536
B	24	#11	24'-10"	3,166
E	20	#9	8'-6"	578
F	40	#11	15'-6"	3,294
G	66	#4	3'-5"	151
H	7	#4	9'-11 1/2"	47
T1	52	#5	15'-7 1/2"	847
T2	14	#5	5'-10"	85
REINFORCING STEEL				LBS 10,704
CL C CONC (SIGN COLUMN)				CY 21.4

① QUANTITIES SHOWN ARE BASED ON A SIGN COLUMN HEIGHT OF 30'. FOR EACH LINEAR FOOT VARIATION IN HEIGHT MAKE THE FOLLOWING ADJUSTMENTS:

BARS A AND B LENGTH, 1'-0"
REINFORCING STEEL, 250 LB
CL C CONC (SIGN COLUMN), 0.78 CY.

TABLE OF ESTIMATED COLUMN QUANTITIES (FOR ONE COLUMN)

5.0' x 5.0' TRUSS

BARS	NO.	SIZE	LENGTH	WEIGHT
A	16	#11	29'-10"	2,536
B	24	#11	24'-4"	3,102
E	20	#9	9'-0"	612
F	40	#11	15'-6"	3,294
G	66	#4	3'-5"	151
H	8	#4	10'-5 1/2"	56
T1	50	#5	16'-4"	852
T2	16	#5	5'-10"	97
REINFORCING STEEL				LBS 10,700
CL C CONC (SIGN COLUMN)				CY 22.2

② QUANTITIES SHOWN ARE BASED ON A SIGN COLUMN HEIGHT OF 30'. FOR EACH LINEAR FOOT VARIATION IN HEIGHT MAKE THE FOLLOWING ADJUSTMENTS:

BARS A AND B LENGTH, 1'-0"
REINFORCING STEEL, 252 LB
CL C CONC (SIGN COLUMN), 0.82 CY.

TABLE OF ESTIMATED COLUMN QUANTITIES (FOR ONE COLUMN)

5.5' x 5.5' TRUSS

BARS	NO.	SIZE	LENGTH	WEIGHT
A	16	#11	29'-10"	2,536
B	26	#11	23'-10"	3,292
E	21	#9	9'-6"	678
F	42	#11	15'-6"	3,459
G	66	#4	3'-5"	151
H	8	#4	10'-11 1/2"	59
T1	50	#5	16'-1 1/2"	841
T2	16	#5	5'-10"	97
REINFORCING STEEL				LBS 11,113
CL C CONC (SIGN COLUMN)				CY 23.1

③ QUANTITIES SHOWN ARE BASED ON A SIGN COLUMN HEIGHT OF 30'. FOR EACH LINEAR FOOT VARIATION IN HEIGHT MAKE THE FOLLOWING ADJUSTMENTS:

BARS A AND B LENGTH, 1'-0"
REINFORCING STEEL, 262 LB
CL C CONC (SIGN COLUMN), 0.86 CY.

TABLE OF ESTIMATED COLUMN QUANTITIES (FOR ONE COLUMN)

6.0' x 6.0' TRUSS

BARS	NO.	SIZE	LENGTH	WEIGHT
A	16	#11	29'-10"	2,536
B	28	#11	23'-4"	3,471
E	22	#9	10'-0"	748
F	44	#11	15'-6"	3,623
G	66	#4	3'-5"	151
H	9	#4	11'-5 1/2"	69
T1	48	#5	17'-2 1/2"	862
T2	18	#5	5'-10"	109
REINFORCING STEEL				LBS 11,569
CL C CONC (SIGN COLUMN)				CY 23.9

④ QUANTITIES SHOWN ARE BASED ON A SIGN COLUMN HEIGHT OF 30'. FOR EACH LINEAR FOOT VARIATION IN HEIGHT MAKE THE FOLLOWING ADJUSTMENTS:

BARS A AND B LENGTH, 1'-0"
REINFORCING STEEL, 275 LB
CL C CONC (SIGN COLUMN), 0.90 CY.

TABLE OF ESTIMATED COLUMN QUANTITIES (FOR ONE COLUMN)

6.5' x 6.5' TRUSS

BARS	NO.	SIZE	LENGTH	WEIGHT
A	16	#11	29'-10"	2,536
B	30	#11	22'-10"	3,639
E	23	#9	10'-6"	821
F	46	#11	15'-6"	3,788
G	66	#4	3'-5"	151
H	9	#4	11'-11 1/2"	72
T1	48	#5	18'-3 1/2"	916
T2	18	#5	5'-10"	109
REINFORCING STEEL				LBS 12,032
CL C CONC (SIGN COLUMN)				CY 24.7

⑤ QUANTITIES SHOWN ARE BASED ON A SIGN COLUMN HEIGHT OF 30'. FOR EACH LINEAR FOOT VARIATION IN HEIGHT MAKE THE FOLLOWING ADJUSTMENTS:

BARS A AND B LENGTH, 1'-0"
REINFORCING STEEL, 287 LB
CL C CONC (SIGN COLUMN), 0.94 CY.

TABLE OF ESTIMATED COLUMN QUANTITIES (FOR ONE COLUMN)

7.0' x 7.0' TRUSS

BARS	NO.	SIZE	LENGTH	WEIGHT
A	16	#11	29'-10"	2,536
B	30	#11	22'-4"	3,559
E	23	#9	11'-0"	860
F	46	#11	15'-6"	3,788
G	66	#4	3'-5"	151
H	10	#4	12'-5 1/2"	83
T1	46	#5	19'-0"	912
T2	20	#5	5'-10"	122
REINFORCING STEEL				LBS 12,011
CL C CONC (SIGN COLUMN)				CY 25.4

⑥ QUANTITIES SHOWN ARE BASED ON A SIGN COLUMN HEIGHT OF 30'. FOR EACH LINEAR FOOT VARIATION IN HEIGHT MAKE THE FOLLOWING ADJUSTMENTS:

BARS A AND B LENGTH, 1'-0"
REINFORCING STEEL, 289 LB
CL C CONC (SIGN COLUMN), 0.98 CY.

TABLE OF ESTIMATED COLUMN QUANTITIES (FOR ONE COLUMN)

7.5' x 7.5' TRUSS

BARS	NO.	SIZE	LENGTH	WEIGHT
A	16	#11	29'-10"	2,536
B	32	#11	21'-10"	3,712
E	24	#9	11'-6"	938
F	48	#11	15'-6"	3,953
G	66	#4	3'-5"	151
H	10	#4	12'-11 1/2"	87
T1	44	#5	18'-9 1/2"	862
T2	20	#5	5'-10"	122
REINFORCING STEEL				LBS 12,361
CL C CONC (SIGN COLUMN)				CY 26.2

⑦ QUANTITIES SHOWN ARE BASED ON A SIGN COLUMN HEIGHT OF 30'. FOR EACH LINEAR FOOT VARIATION IN HEIGHT MAKE THE FOLLOWING ADJUSTMENTS:

BARS A AND B LENGTH, 1'-0"
REINFORCING STEEL, 299 LB
CL C CONC (SIGN COLUMN), 1.03 CY.

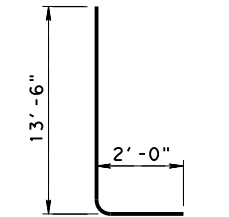
TABLE OF ESTIMATED COLUMN QUANTITIES (FOR ONE COLUMN)

8.0' x 8.0' TRUSS

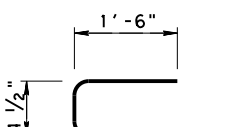
BARS	NO.	SIZE	LENGTH	WEIGHT
A	16	#11	29'-10"	2,536
B	34	#11	21'-4"	3,853
E	25	#9	12'-0"	1,020
F	50	#11	15'-6"	4,118
G	66	#4	3'-5"	151
H	11	#4	13'-5 1/2"	99
T1	44	#5	19'-10 1/2"	912
T2	22	#5	5'-10"	134
REINFORCING STEEL				LBS 12,823
CL C CONC (SIGN COLUMN)				CY 26.8

⑧ QUANTITIES SHOWN ARE BASED ON A SIGN COLUMN HEIGHT OF 30'. FOR EACH LINEAR FOOT VARIATION IN HEIGHT MAKE THE FOLLOWING ADJUSTMENTS:

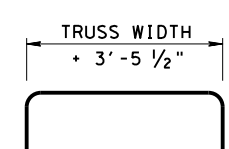
BARS A AND B LENGTH, 1'-0"
REINFORCING STEEL, 312 LB
CL C CONC (SIGN COLUMN), 1.07 CY.



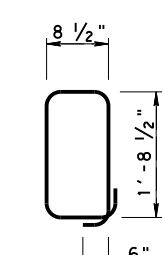
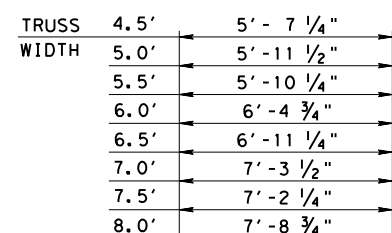
BAR F (#11)



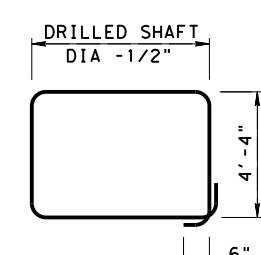
BAR G (#4)



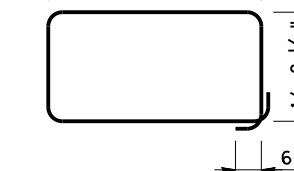
BAR H (#4)



BAR T2 (#5)



BAR T3 (#5)



BAR T1 (#5)

Texas Department of Transportation
Bridge Houston District Standard

OVERHEAD SIGN BRIDGE COLUMN DETAILS
HORIZONTAL SCHEME

OSB-HS-25 (HOU)

FILE: OSB-HS-25 (HOU). DGN	DN: TXDOT	CK: TXDOT	DW: TXDOT	CK: TXDOT
© TXDOT April 2025	CONT	SECT	JOB	HIGHWAY
REVISIONS				
04/2025: 2024 Spec Updates	DIST	COUNTY	SHEET NO.	
HOU				

DISCLAIMER: The use of this standard is governed by the "Texas Engineering Practice Act". No warranty of any kind is made by TxDOT for any purpose whatsoever. TxDOT assumes no responsibility for the conversion of this standard to other formats or for incorrect results or damages resulting from its use.



DATE:
FILE:

SPAN (ft)	DESIGN WIND HEIGHT TO C TRUSS (ft)	MAXIMUM DRILLED SHAFT AXIAL LOAD (kips)	MAXIMUM DRILLED SHAFT MOMENT (k-ft)	DRILLED SHAFT DIAMETER (in)	DRILLED SHAFT EMBEDMENT LENGTH (ft)			
					AVERAGE N (BLOWS/12") (SEE NOTE 8)			
					10	20	30	40
40	15	66	63	36	23	13	10	9
	20	83	102	36	28	16	11	10
	25	100	151	36	33	18	13	13
	30	118	211	36	39	21	15	15
	35	137	281	36	45	24	18	18
	40	157	363	36	51	27	20	20
	45	177	456	36	57	30	23	23
	50	199	561	36	63	33	25	25
50	15	72	63	36	25	14	10	9
	20	90	102	36	30	17	12	10
	25	109	151	36	36	20	14	13
	30	129	211	36	42	23	16	15
	35	150	281	36	49	26	18	18
	40	172	363	36	55	29	20	20
	45	195	456	36	62	33	23	23
	50	218	561	36	69	36	25	25
60	15	78	63	36	27	15	11	9
	20	97	102	36	33	18	13	10
	25	118	151	36	39	21	15	13
	30	140	211	36	45	24	17	15
	35	163	281	36	52	28	19	18
	40	186	363	36	59	31	22	20
	45	211	456	36	67	35	24	23
	50	236	561	36	75	39	27	25
70	15	83	63	36	28	16	11	9
	20	104	102	36	35	19	14	11
	25	127	151	36	41	22	16	13
	30	150	211	36	49	26	18	15
	35	175	281	36	56	29	21	18
	40	200	363	36	64	33	23	20
	45	227	456	36	72	37	26	23
	50	254	561	36	80	42	29	25
80	15	89	63	36	30	16	12	10
	20	112	102	36	37	20	14	11
	25	136	151	36	44	24	17	13
	30	161	211	36	52	27	19	15
	35	187	281	36	60	31	22	18
	40	214	363	36	68	36	25	20
	45	243	456	36	77	40	28	23
	50	252	561	42	69	36	25	25
90	15	94	63	36	32	17	13	10
	20	119	102	36	39	21	15	12
	25	144	151	36	47	25	18	14
	30	171	211	36	55	29	20	16
	35	200	281	36	63	33	23	18
	40	229	363	36	72	38	26	20
	45	240	456	42	65	34	24	23
	50	268	561	42	73	38	26	25

SPAN (ft)	DESIGN WIND HEIGHT TO C TRUSS (ft)	MAXIMUM DRILLED SHAFT AXIAL LOAD (kips)	MAXIMUM DRILLED SHAFT MOMENT (k-ft)	DRILLED SHAFT DIAMETER (in)	DRILLED SHAFT EMBEDMENT LENGTH (ft)			
					AVERAGE N (BLOWS/12") (SEE NOTE 8)			
					10	20	30	40
100	15	101	67	42	29	16	12	10
	20	126	109	42	36	19	14	11
	25	152	161	42	43	23	16	13
	30	179	224	42	50	26	19	15
	35	207	298	42	57	30	21	18
	40	236	384	42	64	34	23	20
	45	266	482	42	72	38	26	23
	50	297	592	42	80	42	29	25
110	15	107	67	42	31	17	12	10
	20	133	109	42	38	20	15	12
	25	160	161	42	45	24	17	13
	30	189	224	42	52	28	19	15
	35	219	298	42	60	31	22	18
	40	249	384	42	68	35	25	20
	45	281	482	42	76	40	27	23
	50	294	592	48	70	36	25	25
120	15	112	67	42	32	18	13	10
	20	140	109	42	39	21	15	12
	25	169	161	42	47	25	18	14
	30	199	224	42	55	29	20	16
	35	230	298	42	63	33	23	18
	40	262	384	42	71	37	26	20
	45	296	482	42	80	41	29	23
	50	309	592	48	73	38	26	25
130	15	117	67	42	34	18	13	11
	20	147	109	42	41	22	16	13
	25	177	161	42	49	26	18	15
	30	209	224	42	57	30	21	17
	35	242	298	42	66	34	24	19
	40	276	384	42	75	39	27	21
	45	291	482	48	69	36	25	23
	50	324	592	48	77	40	28	25
140	15	125	72	42	35	19	14	11
	20	156	116	42	44	23	17	13
	25	189	171	42	52	28	19	15
	30	222	237	42	61	32	22	17
	35	257	316	42	70	36	25	20
	40	294	406	42	79	41	28	22
	45	309	509	48	73	38	26	23
	50	325	625	54	69	36	25	25

DESIGNER NOTE:
THIS SHEET IS FOR DESIGNER'S USE
IN DETERMINING DRILLED SHAFT DIAMETER,
LOADS AND EMBEDMENT. DO NOT INSERT
INTO PLANSET.

FOUNDATION DATA AND EMBEDMENT LENGTH TABLE

			
OVERHEAD SIGN BRIDGE FOUNDATION DATA AND EMBEDMENT SELECTION TABLE HORIZONTAL SCHEME OSB-HS-25 (HOU)			
FILE: OSB-HS-25 (HOU). DGN	DN: TXDOT	CK: TXDOT	DW: TXDOT
© TXDOT April 2025	CONT	SECT	JOB
REVISIONS 04/2025: 2024 Spec Updates Added Note 8		DIST	COUNTY
HOU		SHEET NO.	

DISCLAIMER: The use of this standard is governed by the "Texas Engineering Practice Act". No warranty of any kind is made by TxDOT for any purpose whatsoever. TxDOT assumes no responsibility for the conversion of this standard to other formats or for incorrect results or damages resulting from its use.

DATE: FILE:



SPAN (ft)	DESIGN WIND HEIGHT TO C TRUSS (ft)	MAXIMUM DRILLED SHAFT AXIAL LOAD (kips)	MAXIMUM DRILLED SHAFT MOMENT (k-ft)	DRILLED SHAFT DIAMETER (in)	DRILLED SHAFT EMBEDMENT LENGTH (ft)			
					AVERAGE N (BLOWS/12") (SEE NOTE 8)			
					10	20	30	40
150	15	130	72	42	37	20	14	11
	20	163	116	42	45	24	17	14
	25	197	171	42	54	29	20	16
	30	232	237	42	63	33	23	18
	35	269	316	42	73	38	26	20
	40	287	406	48	68	36	25	20
	45	322	509	48	76	40	27	23
	50	338	625	54	71	37	26	25
160	15	136	82	48	34	18	13	11
	20	167	131	48	41	22	16	13
	25	200	192	48	49	26	18	14
	30	235	265	48	56	30	21	16
	35	270	351	48	64	34	23	18
	40	307	451	48	73	38	26	20
	45	326	564	54	69	36	25	23
	50	362	691	54	76	40	27	25
170	15	141	82	48	35	19	14	11
	20	174	131	48	42	23	16	13
	25	208	192	48	50	27	19	15
	30	244	265	48	58	31	21	17
	35	281	351	48	67	35	24	19
	40	319	451	48	75	39	27	21
	45	338	564	54	71	37	26	23
	50	375	691	54	79	41	28	25
180	15	149	87	48	37	20	14	11
	20	183	139	48	45	24	17	13
	25	219	202	48	53	28	20	15
	30	257	279	48	61	32	22	18
	35	296	370	48	70	37	25	20
	40	336	474	48	79	41	28	22
	45	356	592	54	75	39	27	23
	50	377	725	60	72	37	26	25
190	15	156	93	48	38	21	15	12
	20	192	146	48	47	25	18	14
	25	230	213	48	55	29	20	16
	30	269	294	48	64	34	23	18
	35	310	388	48	73	38	26	21
	40	333	497	54	70	37	25	20
	45	373	621	54	78	41	28	23
	50	394	759	60	75	39	27	25
200	15	161	93	48	40	21	15	12
	20	199	146	48	48	26	18	14
	25	239	213	48	57	30	21	17
	30	279	294	48	66	35	24	19
	35	321	388	48	76	40	27	21
	40	345	497	54	73	38	26	20
	45	369	621	60	70	37	25	23
	50	407	759	60	77	40	28	25

SPAN (ft)	DESIGN WIND HEIGHT TO C TRUSS (ft)	MAXIMUM DRILLED SHAFT AXIAL LOAD (kips)	MAXIMUM DRILLED SHAFT MOMENT (k-ft)	DRILLED SHAFT DIAMETER (in)	DRILLED SHAFT EMBEDMENT LENGTH (ft)			
					AVERAGE N (BLOWS/12") (SEE NOTE 8)			
					10	20	30	40
210	15	170	98	48	42	22	16	13
	20	209	155	48	51	27	19	15
	25	250	225	48	60	31	22	17
	30	293	309	48	70	36	25	20
	35	337	407	48	80	41	29	22
	40	361	521	54	76	39	27	21
	45	385	650	60	73	38	26	23
	50	426	794	60	80	42	29	25
220	15	176	98	48	43	23	16	13
	20	216	155	48	52	28	19	15
	25	259	225	48	62	32	23	18
	30	303	309	48	72	37	26	20
	35	330	407	54	70	36	25	20
	40	373	521	54	78	41	28	22
	45	397	650	60	75	39	27	23
	50	439	794	60	83	43	30	25

1. DETERMINE DRILLED SHAFT DIAMETER AND MAXIMUM DRILLED SHAFT AXIAL LOAD (KIPS) FROM TABLE BASED ON SPAN LENGTH AND DESIGN WIND HEIGHT TO CENTERLINE OF TRUSS.
2. CONTACT THE HOUSTON DISTRICT LABORATORY FOR CONCISE DRILLED SHAFT EMBEDMENT LENGTH OR USE THE FOLLOWING ITERATIVE PROCEDURE.
3. MAKE AN INITIAL ESTIMATE OF THE DRILLED SHAFT EMBEDMENT LENGTH.
4. FROM SOIL EXPLORATION DATA, DETERMINE AN AVERAGE N VALUE (BLOWS/12") OF THE SOIL THROUGHOUT THE INITIAL EMBEDMENT LENGTH. USE A WEIGHTED-AVERAGE OF THE BLOW COUNT OF INDIVIDUAL STRATA.
5. USE TABLE TO DETERMINE THE REQUIRED DRILLED SHAFT EMBEDMENT LENGTH BASED ON AXIAL LOAD AND AVERAGE N.
6. IF THE REQUIRED EMBEDMENT LENGTH DIFFERS SIGNIFICANTLY FROM THE INITIAL ESTIMATED EMBEDMENT LENGTH, RETURN TO STEP 3 WITH THE REQUIRED EMBEDMENT LENGTH DETERMINED IN STEP 5 AND REPEAT STEPS 3, 4 & 5.
7. THE EMBEDMENT LENGTH TABLE IS BASED UPON THE GREATEST EMBEDMENT LENGTH DERIVED FROM MOMENT, UPLIFT, OR THE AXIAL LOAD IN THE DRILLED SHAFT.
8. TCP N-VALUE, REFER TO APPENDIX 2, TXDOT GEOTECHNICAL MANUAL-LRFD, APRIL 2024 FOR SPT N-VALUES AND TCP BLOW COUNTS CONVERSION

DESIGNER NOTE:
 THIS SHEET IS FOR DESIGNER'S USE
 IN DETERMINING DRILLED SHAFT DIAMETER,
 LOADS AND EMBEDMENT. DO NOT INSERT
 INTO PLANSET.

FOUNDATION DATA AND EMBEDMENT LENGTH TABLE (CONT)

			
OVERHEAD SIGN BRIDGE FOUNDATION DATA AND EMBEDMENT SELECTION TABLE HORIZONTAL SCHEME OSB-HS-25 (HOU)			
FILE: OSB-HS-25 (HOU). DGN	DN: TXDOT	CK: TXDOT	DW: TXDOT
© TXDOT April 2025	CONT	SECT	JOB
REVISIONS 04/2025: 2024 Spec Updates Added Note 8		DIST	COUNTY
HOU		SHEET NO.	