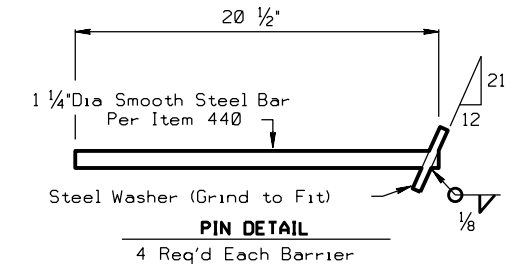
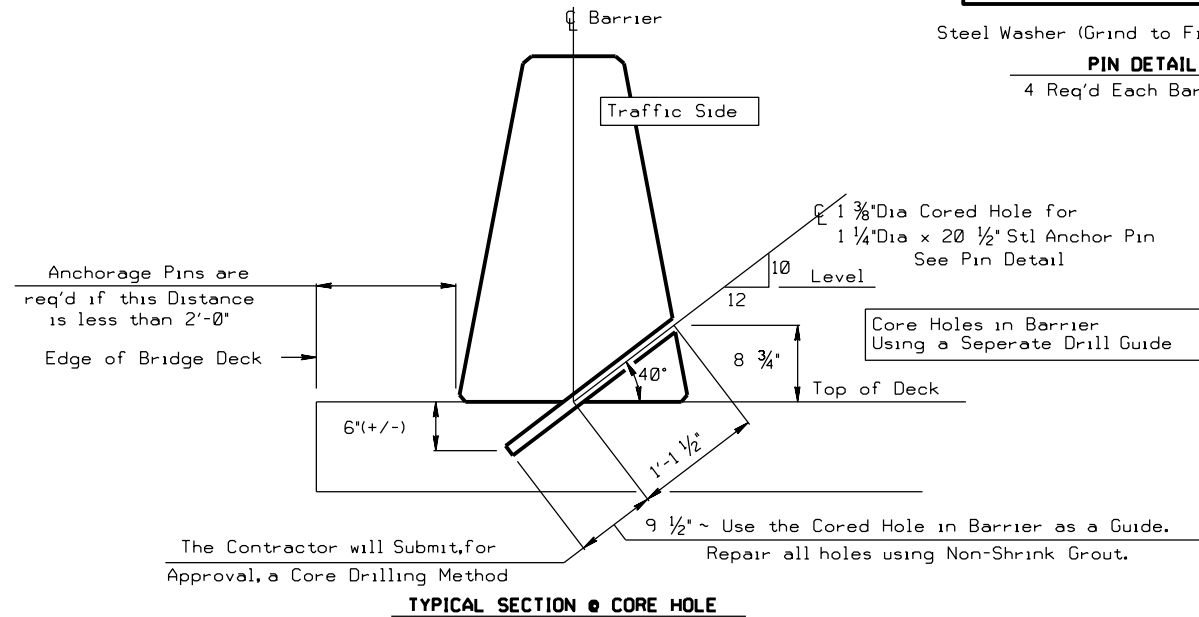
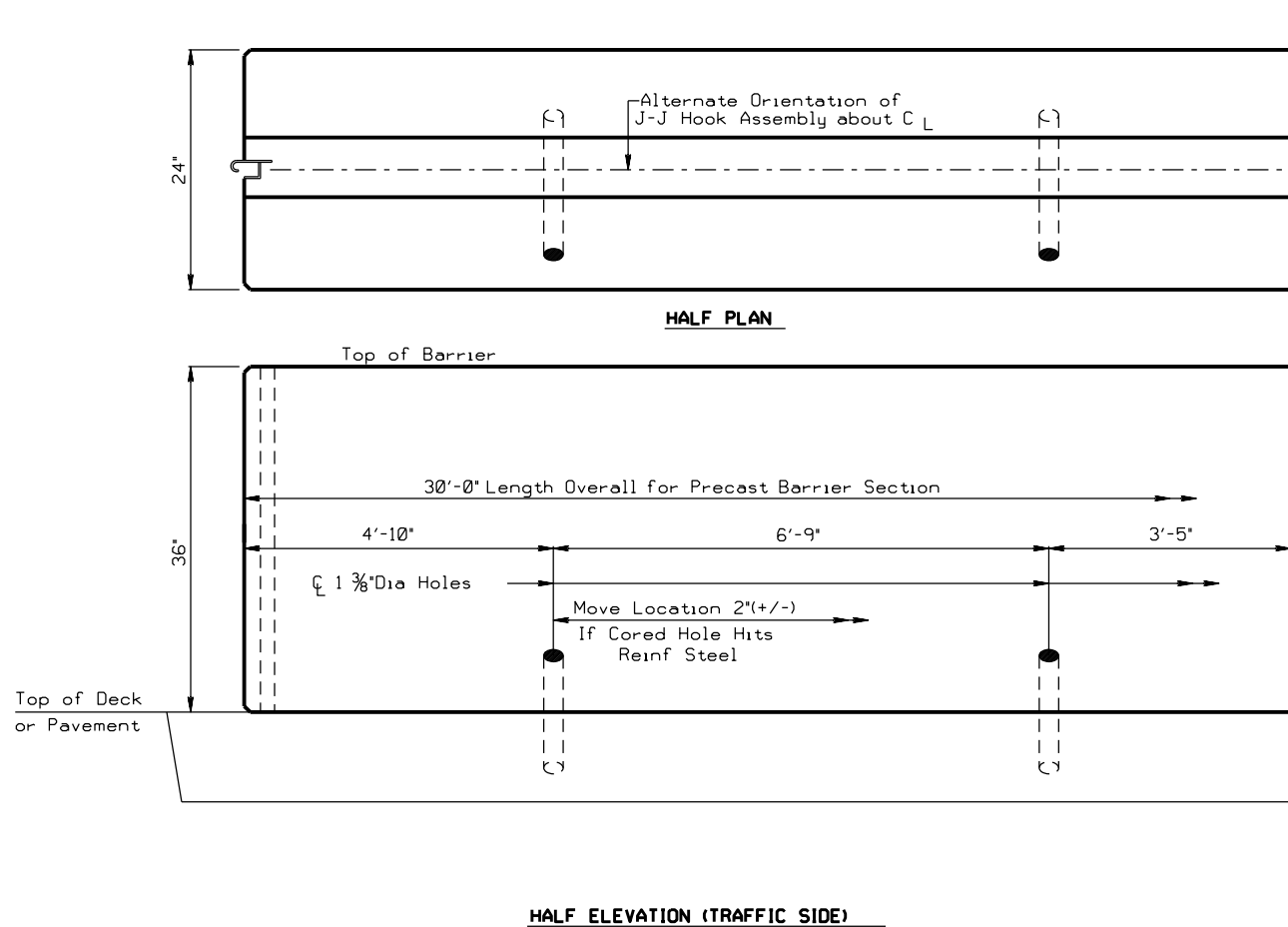


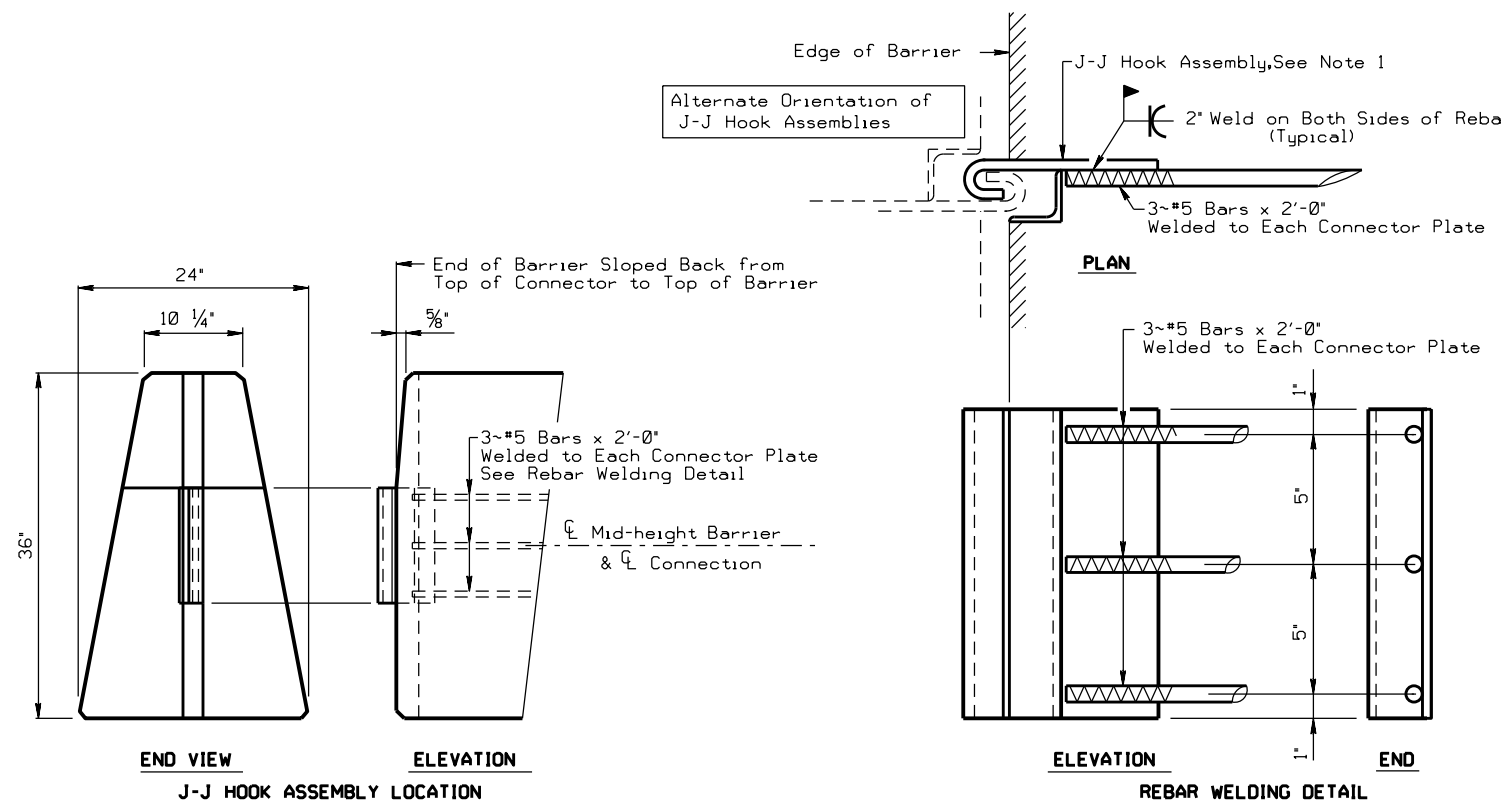


DISCLAIMER: The use of this standard is governed by the "Texas Engineering Practice Act". No warranty of any kind is made by TxDOT for any purpose whatsoever. TxDOT assumes no responsibility for the conversion of this standard to other formats or for incorrect results or damages resulting from its use.



### BARRIER ANCHORAGE DETAIL

For Barrier located on Bridge Deck with less than 2' clearance or transition to dissimilar Barrier



### J-J HOOK DETAILS

#### CONNECTOR NOTES AND SPECIFICATIONS

- 1) J-J Hooks are a patented design as manufactured by EASI-SET Industries, phone 1-800-547-4045. All steel assemblies for joint shall be galvanized after fabrication in accordance with item 445, "Galvanizing."
- 2) Reinforcing Steel: ASTM A-36 (plain).
- 3) Welding: All Welding to be in accordance with American Welding Society (AWS) Structural Welding Codes. Use weldable rebar per Item 440.
- 4) Tolerances: J-J Hook assembly tolerances as per manufacturer. Installation and fabrication tolerances as follows:  
Barrier length + 1/4"  
Connector location +/- 1/16"

SHEET 2 OF 2



## PRECAST SINGLE SLOPE CONCRETE BARRIER (J-J HOOK CONNECTION)

### PSSCB-JJ-25 (HOU)

FILE: PSSCB-JJ-25 (HOU).dgn	DN: TXDOT	CK: TXDOT	DW: TXDOT	CK: TXDOT
© TXDOT February 2025	CONT	SECT	JOB	HIGHWAY
REVISIONS				
02-25-2024 Spec Updates	DIST	COUNTY		SHEET NO.

R = Radius  
Dia = Diameter

DATE:  
FILE: