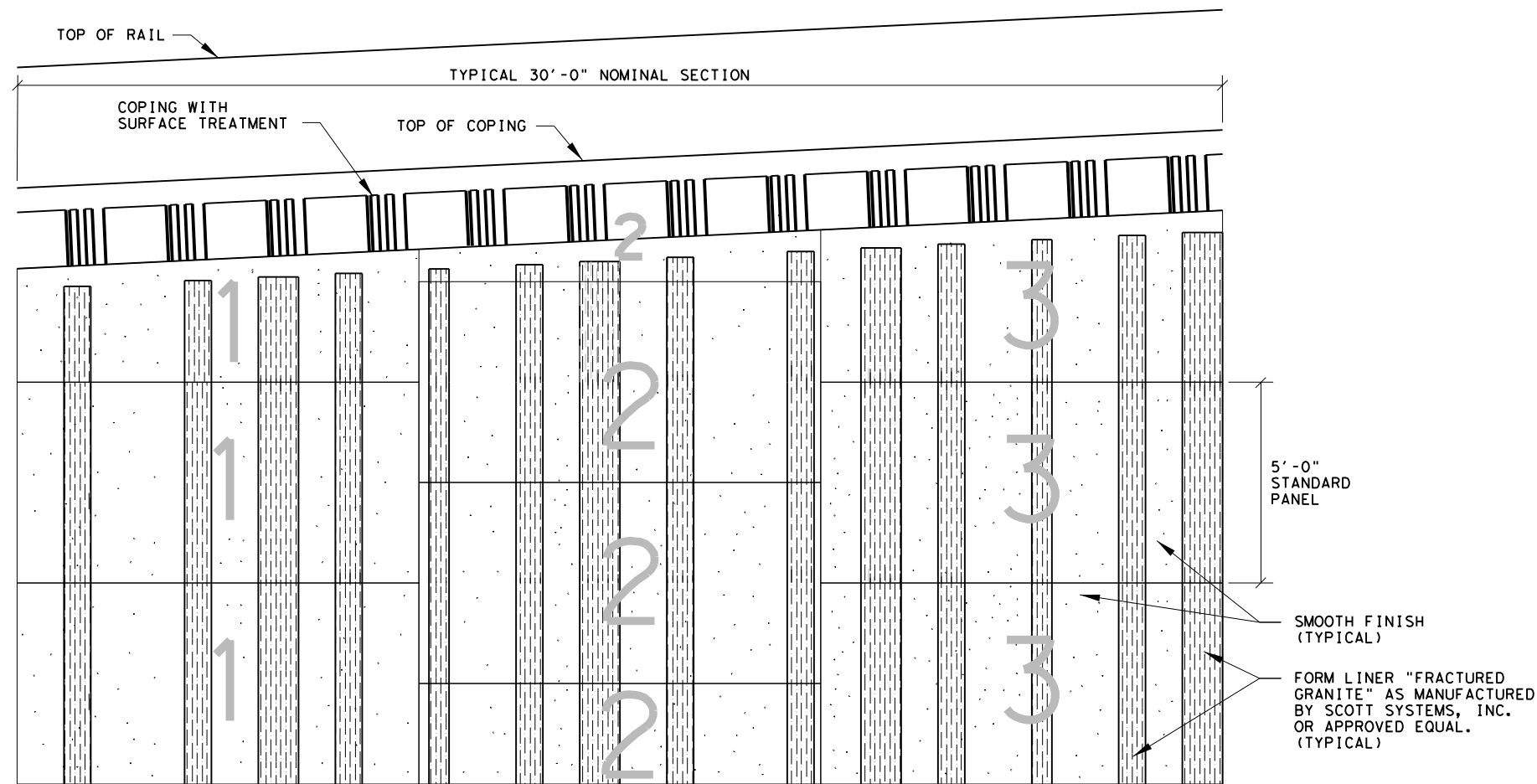
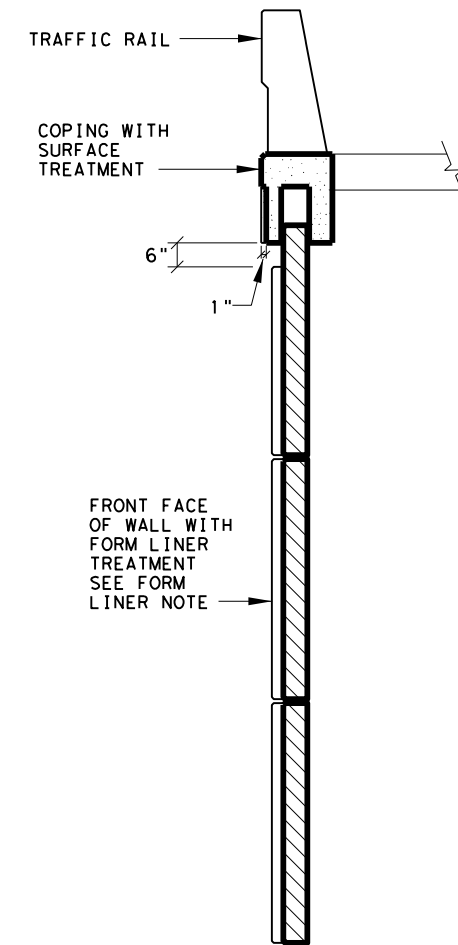


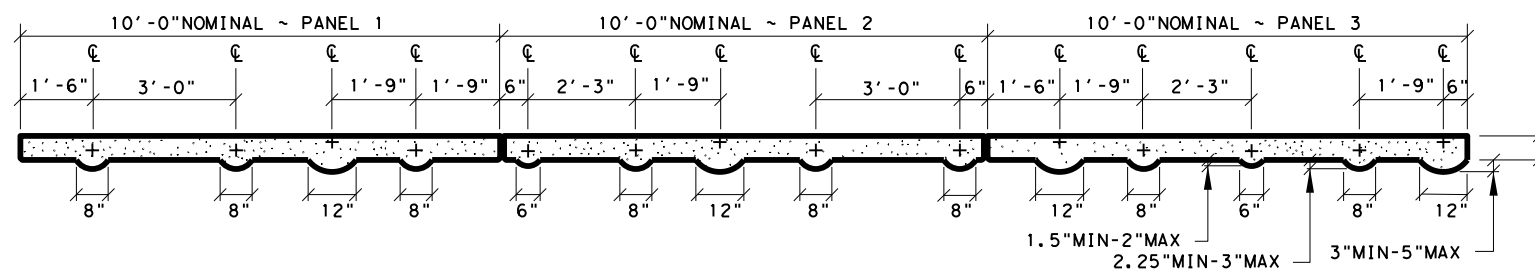
DISCLAIMER: This standard is governed by the "Texas Engineering Practice Act". No warranty of any kind is made by TxDOT for any purpose whatsoever. TxDOT assumes no responsibility for the conversion of this standard to other formats or for incorrect results or damages resulting from its use.



ELEVATION



SECTION

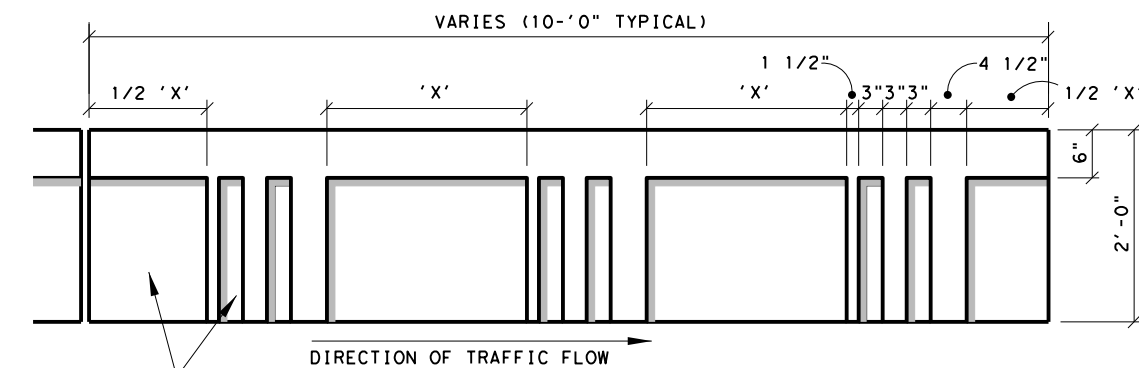


PLAN OF PANELS

PANEL THICKNESS AND EDGE CONNECTION DETAILS, PER MANUFACTURER

NOTE:

1. DETAILS FOR CONSTRUCTION OF RETAINING WALLS ARE SHOWN IN THE STANDARD DRAWING "MECHANICALLY STABILIZED EARTH RETAINING WALL".
2. VERTICAL SCHEME FINISHES ARE CONSIDERED INCIDENTAL TO ITEM 423 "RETAINING WALL".
3. ITEM 427 "SURFACE FINISHES FOR CONCRETE" ARE CONSIDERED INCIDENTAL TO ITEM 423 "RETAINING WALL". SEE SHEET TITLED "SURFACE FINISHES FOR CONCRETE".
4. FORM LINER USED TO PROVIDE TEXTURE SHALL BE OF ONE PIECE CONSTRUCTION. JOINTS SHALL NOT BE PERMITTED IN FORM LINERS.
5. THE CONTRACTOR SHALL PROVIDE THE ENGINEER AND DISTRICT LANDSCAPE ARCHITECT WITH AN 18" SQUARE OR LARGER SAMPLE OF THE "FRACTURED GRANITE" FORM LINER FOR APPROVAL PRIOR TO MANUFACTURING RETAINING WALL PANELS.



ELEVATION OF COPING

(WITH SURFACE TREATMENT)

SEE SECTION FOR RELIEF DIMENSION

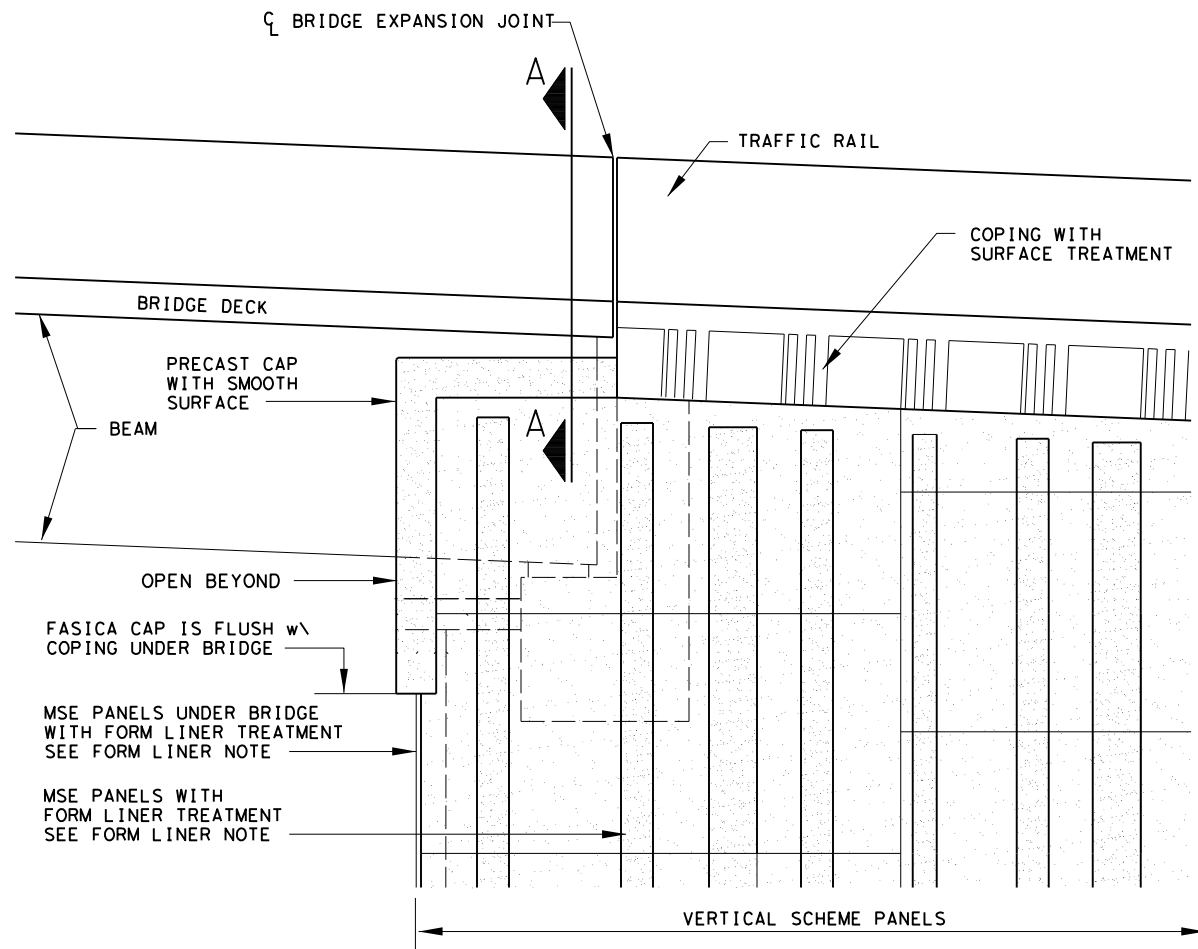
NOT TO SCALE

SHEET 1 OF 3

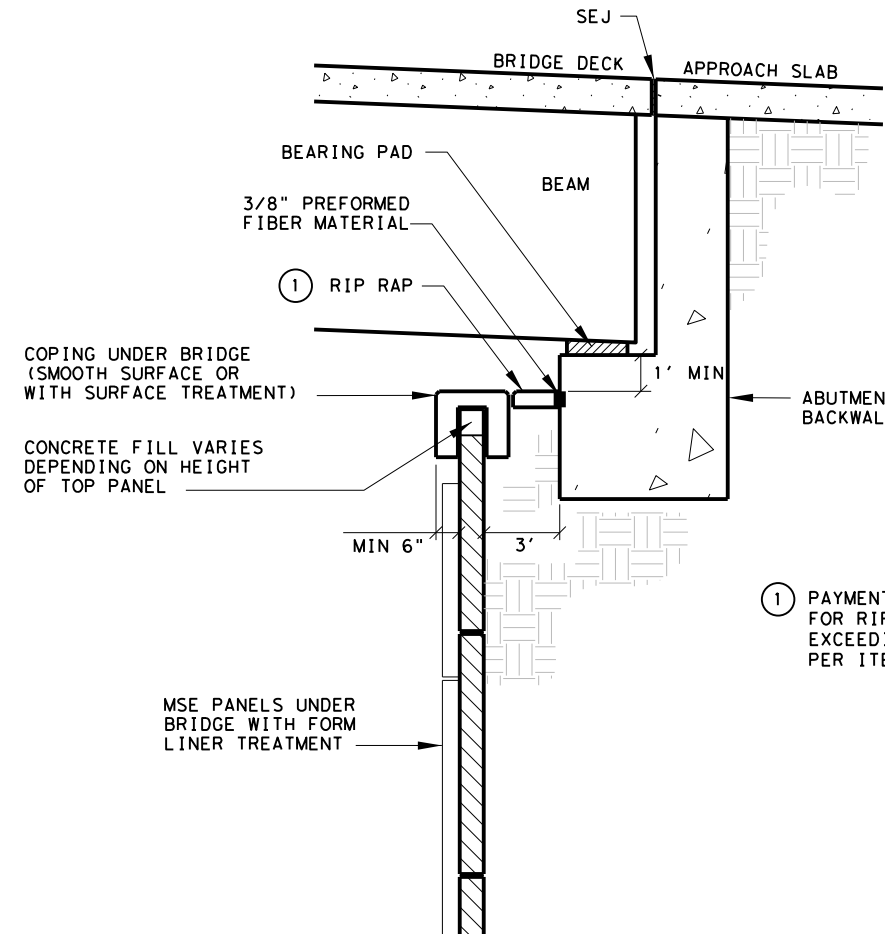
		Bridge Houston District Standard	
RETAINING WALL DETAILS VERTICAL SCHEME			
RWD-VS-25 (HOU)			
FILE: RWD-VS-25 (HOU).DGN	DN: TXDOT	CK: TXDOT	DW: TXDOT
© TXDOT April 2025	CONT	SECT	JOB
REVISIONS 07/2024: Form Liner Treatment Under Bridge 07/2024: Specification Update 04/2025: 2024 Spec Updates		DIST	COUNTY
		SHEET NO.	

DATE:
FILE:

DISCLAIMER: This standard is governed by the "Texas Engineering Practice Act". No warranty of any kind is made by TxDOT for any purpose whatsoever. TxDOT assumes no responsibility for the conversion of this standard to other formats or for incorrect results or damages resulting from its use.

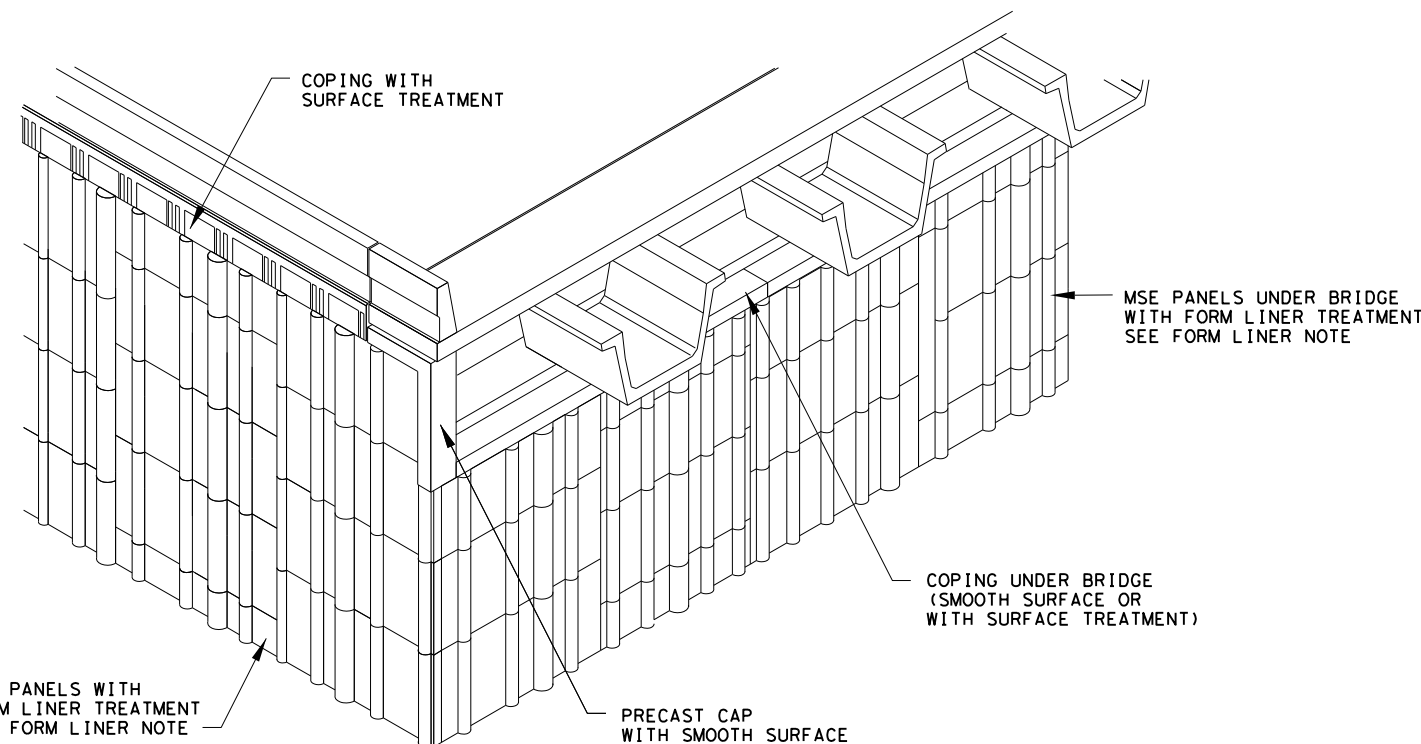


ELEVATION

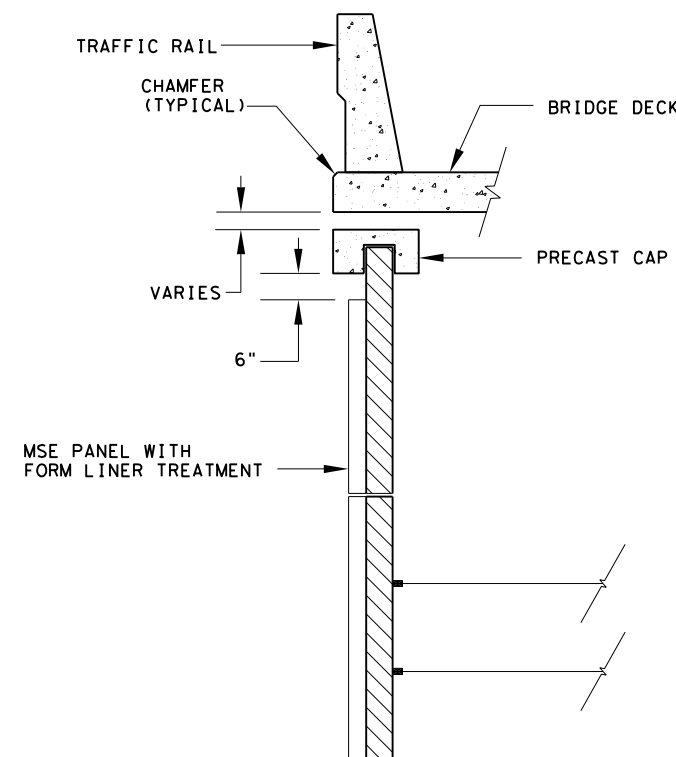


TYPICAL WALL SECTION @ ABUTMENT

① PAYMENT IS INCIDENTAL TO WALL PAYMENT ITEMS, FOR RIP RAP CLOSURE CAP BENEATH BRIDGE NOT EXCEEDING 3FT OF WIDTH. OTHERWISE PAID FOR PER ITEM 432.



MSE Retaining Wall w/ Vertical Face



SECTION A-A

FORM LINER NOTE:
FORM LINER IS "FRACTURED GRANITE"
BY SCOTT SYSTEMS, INC OR APPROVED EQUAL.

NOT TO SCALE SHEET 2 OF 3



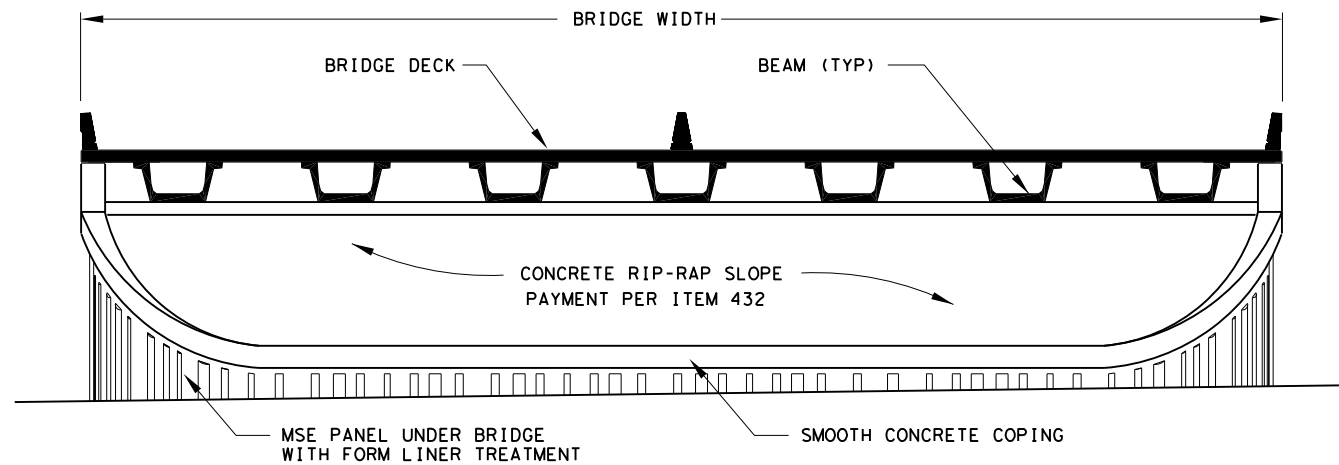
**RETAINING WALL DETAILS
VERTICAL SCHEME**

RWD-VS-25 (HOU)

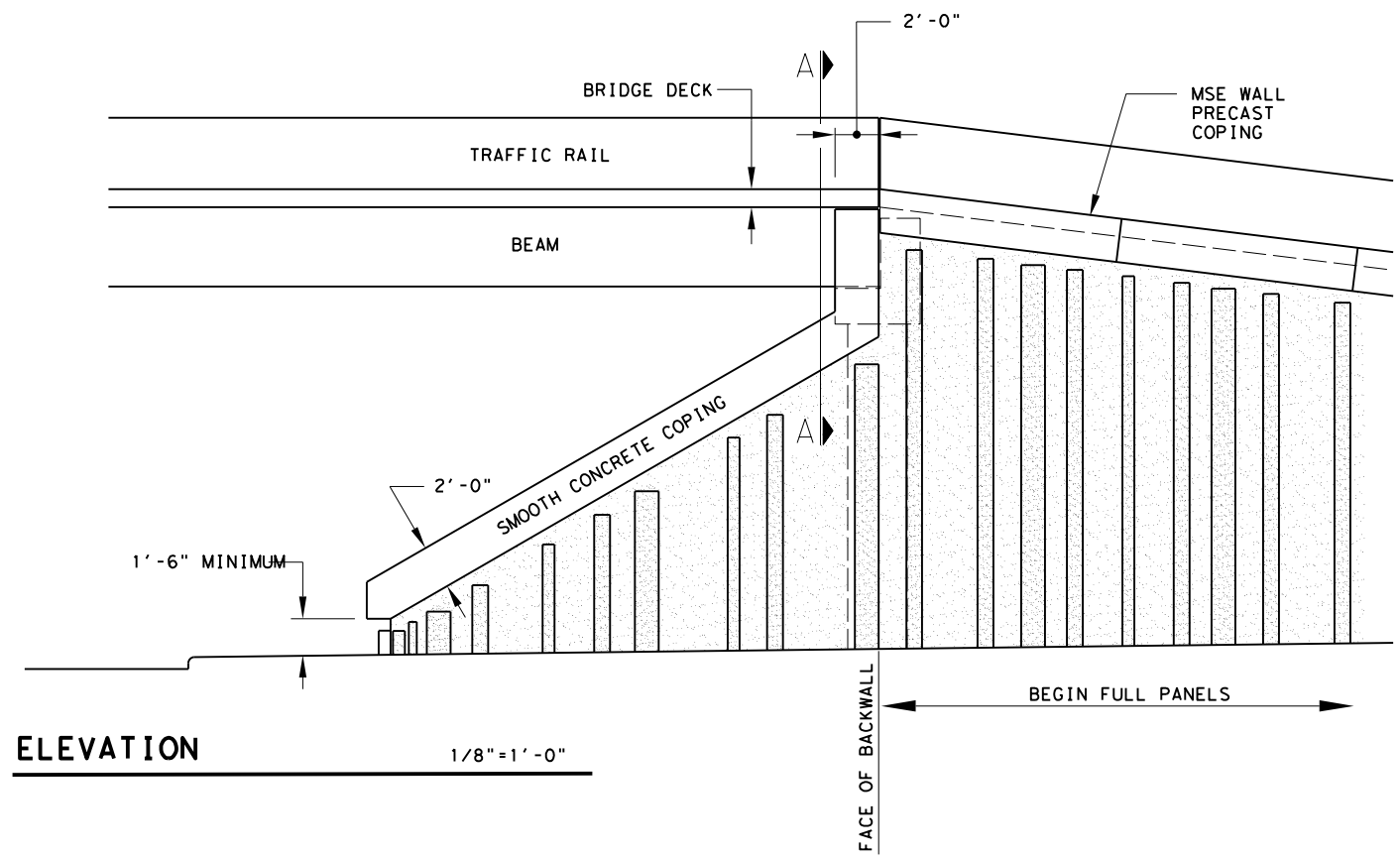
FILE: RWD-VS-25 (HOU).DGN	DN: TXDOT	CK: TXDOT	DW: TXDOT	CK: TXDOT
© TXDOT April 2025	CONT	SECT	JOB	HIGHWAY
REVISIONS				
07/2024: Form Liner Treatment Under Bridge				
07/2024: Specification Update				
04/2025: 2024 Spec Updates				
DIST	COUNTY	SHEET NO.		

DATE:
FILE:

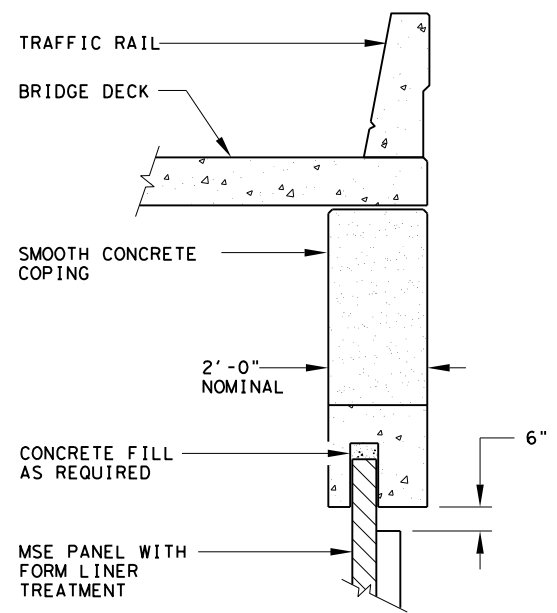
DISCLAIMER: This standard is governed by the "Texas Engineering Practice Act". No warranty of any kind is made by TxDOT for any purpose whatsoever. TxDOT assumes no responsibility for the conversion of this standard to other formats or for incorrect results or damages resulting from its use.



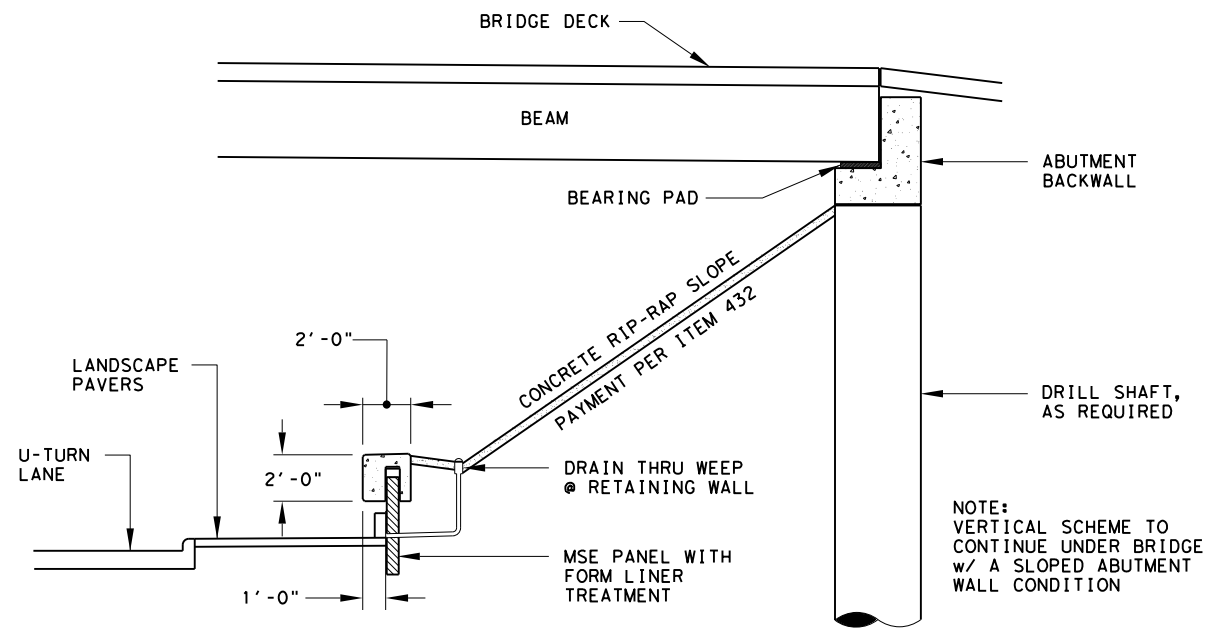
ELEVATION 1/16"=1'-0"



ELEVATION 1/8"=1'-0"



SECTION A-A 1/4"=1'-0"



SECTION 1/8"=1'-0"

NOTE: VERTICAL SCHEME TO CONTINUE UNDER BRIDGE w/ A SLOPED ABUTMENT WALL CONDITION

NOT TO SCALE SHEET 3 OF 3



**RETAINING WALL DETAILS
VERTICAL SCHEME**

RWD-VS-25 (HOU)

FILE: RWD-VS-25 (HOU).DGN	DN: TXDOT	CK: TXDOT	DW: TXDOT	CK: TXDOT
© TXDOT April 2025	CONT	SECT	JOB	HIGHWAY
REVISIONS				
07/2024: Form Liner Treatment Under Bridge				
07/2024: Specification Update				
04/2025: 2024 Spec Updates				
DIST	COUNTY	SHEET NO.		

MSE Retaining Wall w/ Sloped Rip Rap

DATE:
FILE: