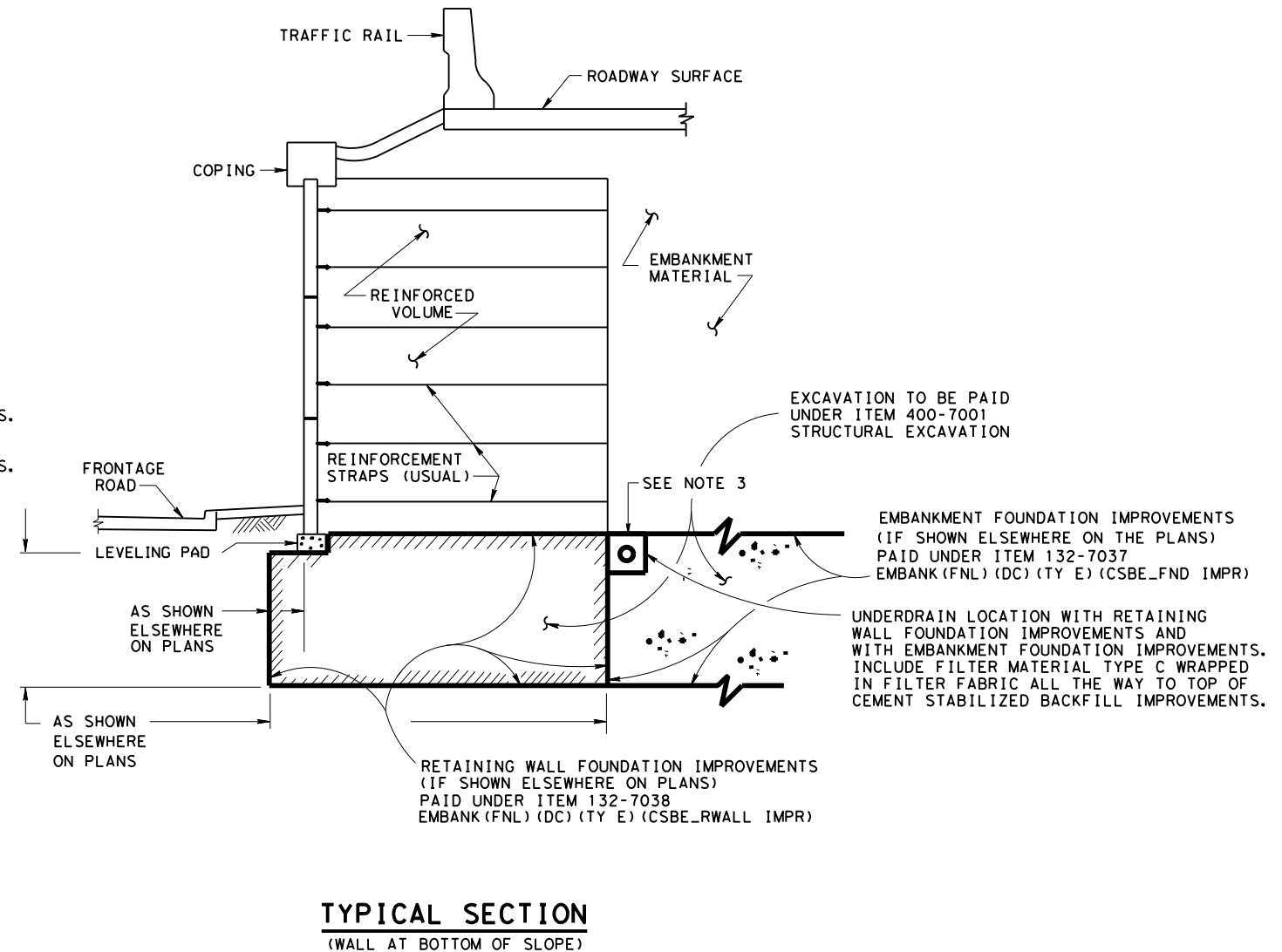
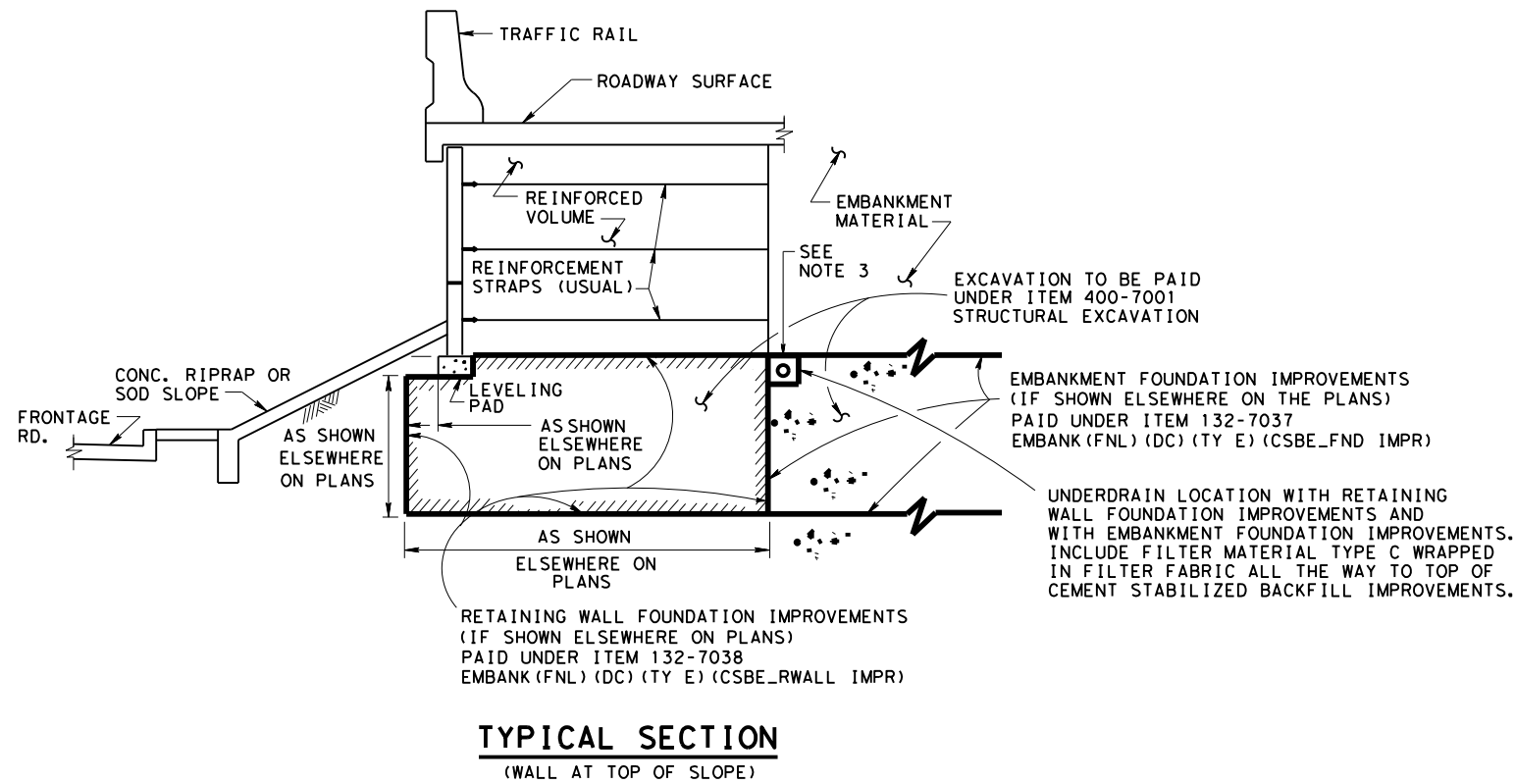
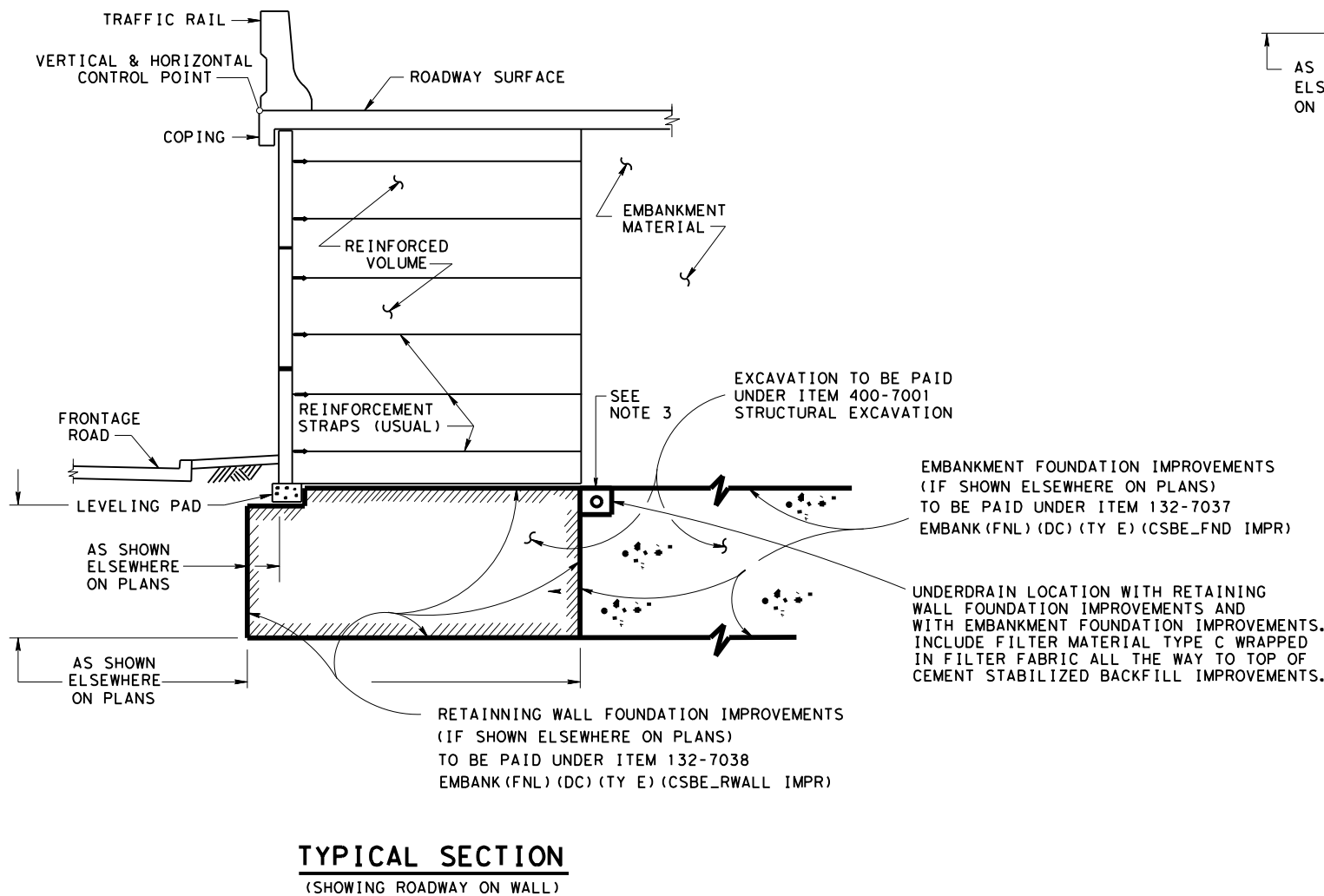


DISCLAIMER: This standard is governed by the "Texas Engineering Practice Act". No warranty of any kind is made by TxDOT for any purpose whatsoever. TxDOT assumes no responsibility for the conversion of this standard to other formats or for incorrect results or damages resulting from its use.



WHEN USING BOTH RETAINING WALL AND EMBANKMENT FOUNDATION IMPROVEMENTS, DESIGNER TO SPECIFY UNDERDRAIN FLOW LINES AS HIGH AS POSSIBLE BUT NOT TO EXTEND TOP OF UNDERDRAIN SYSTEM ABOVE BOTTOM OF REINFORCED VOLUME.



**NOTES:**

1. PROVIDE CEMENT STABILIZED BACKFILL IN ACCORDANCE WITH ITEM 132 AND HOUSTON DISTRICT SPECIAL PROVISION (132-001).
2. FOR ADDITIONAL DETAILS ON RETAINING WALLS SEE "MECHANICALLY STABILIZED RETAINING WALL CEMENT STABILIZED BACKFILL" MSRW-CSB-25(HOU) STANDARD SHEET.
3. CONTRACTOR MAY SUBMIT FOR APPROVAL AN ALTERNATE UNDERDRAIN LOCATION. UNDERDRAIN SLOPE SHOULD BE INCLUDED. ENGINEER WILL FORWARD PROPOSED ALTERNATE UNDERDRAIN DETAILS TO HOUSTON DISTRICT LAB FOR APPROVAL.

<h2>RETAINING WALL AND EMBANKMENT FOUNDATION IMPROVEMENTS</h2> <h3>RW &amp; EFI-25 (HOU)</h3>			
FILE: RW_EFI-25 (HOU). DGN	DN: TXDOT	CK: TXDOT	OW: TXDOT
©TxDOT April 2025	CONT	SECT	JOB
REVISIONS	HIGHWAY		
04/2025: 2024 Spec Updates. Removed reinforcement 0.5H width, relocated the underdrain & added Note 3	DIST	COUNTY	SHEET NO.

DATE:  
FILE: