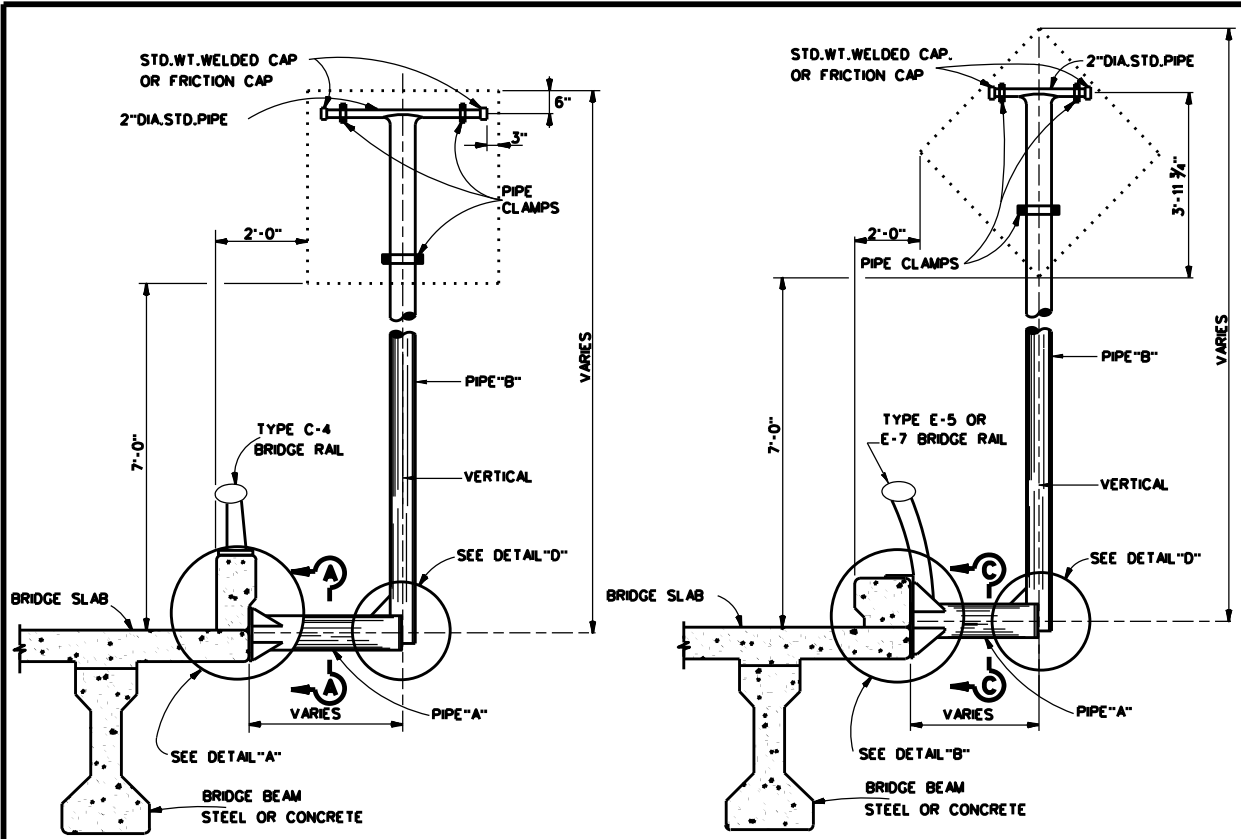


DISCLAIMER: The use of this standard is governed by the "Texas Engineering Practice Act". No warranty of any kind is made by TxDOT for any purpose whatsoever. TxDOT assumes no responsibility for the conversion of this standard to other formats or for incorrect results or damages resulting from its use.

DATE: FILE:

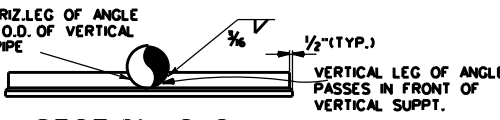
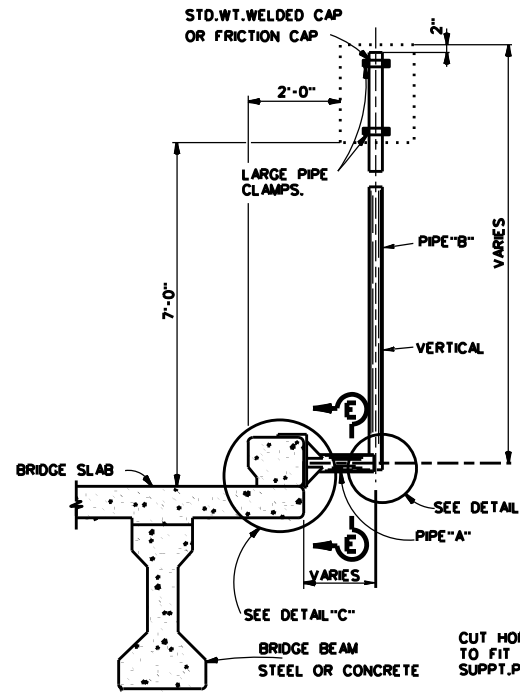
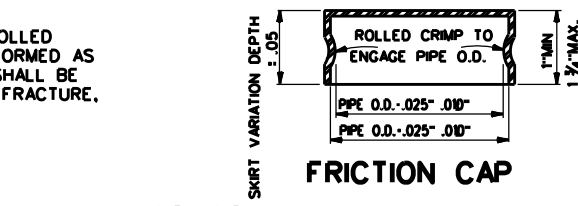


BRIDGE MOUNTED SIGNS

NOTES:

FRICTION CAPS-MANUFACTURED FROM HOT OR COLD ROLLED STEEL SHEETS, SIZED FOR DRIVE FRICTION FIT, AND SO FORMED AS TO HAVE NO TENDENCY TO ROCK WHEN SEATED. THEY SHALL BE FREE OF SHARP INDENTATIONS AND EVIDENCE OF METAL FRACTURE, WITH RIMS REASONABLY STRAIGHT AND SMOOTH.

FRICTION CAP

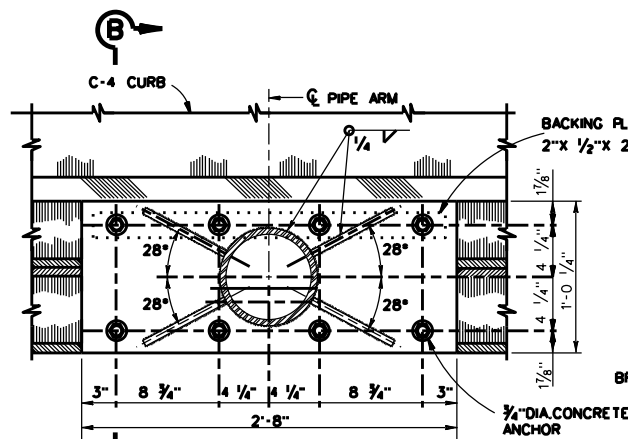


SECTION G-G

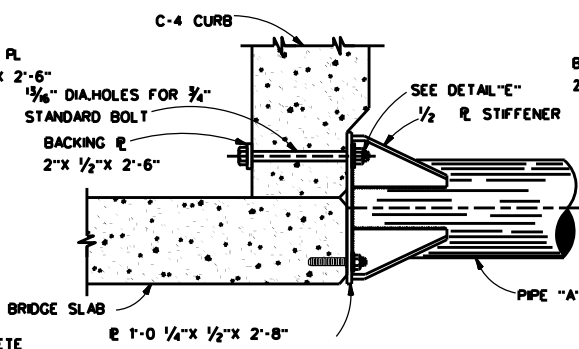
NOTES:

CONTRACTOR SHALL CHECK CROSS SLOPE ON BRIDGES AND THEN FABRICATE SIGN MOUNTS SO SIGN SUPPORT PIPE IS VERTICAL. ADDITIONAL "U" OR "T" EXTENSION PIPE OF THE SIZE AND LENGTHS SHOWN ON STANDARD PLAN SHEETS SHALL BE PROVIDED AND ATTACHED (WELDED OR AS DIRECTED BY THE ENGINEER) TO PIPE "B" AS REQUIRED. SIGN PANELS SHALL BE ATTACHED TO THE 3" DIA. OR SMALLER PIPE ARMS AS SHOWN IN THE STANDARD PLAN SHEETS. ATTACHMENT TO 4" OR 6" PIPES SHALL BE AS SHOWN ON THIS SHEET OR AS SHOWN IN STANDARD PLAN SHEETS EXCEPT FOR R2-1 AND R2-4 OR R5-1A AND R5-1 SIGN COMBINATIONS WHICH SHALL BE MOUNTED AS SHOWN ON THIS SHEET. LOCK NUTS WITH NONREVERSIBLE HIGH TENSILE STRENGTH STAINLESS STEEL LOCKING PINS SHALL BE USED ON BOLTS. CONCRETE ANCHORS SHALL BE STANDARD 3 UNIT CONCRETE ANCHORS, RAWL, PARABOLT, KWIKBOLT OR EQUAL, WITH LOCK NUT, FLAT WASHER & LOCK WASHER. ANCHORS SHALL NOT BE LESS THAN 4 1/2" IN LENGTH. SIGN SUPPORTS SHALL BE GALVANIZED AFTER FABRICATION. SIGN SUPPORT BRACKETS AS DETAILED ON THIS SHEET ARE FOR SIGNS MOUNTED ON RIGHT SIDE OF ROADWAY. LEFT HAND BRACKETS SHALL BE OPPOSITE TO THOSE SHOWN. SEE SIGN LAYOUT SHEETS TO DETERMINE WHETHER RIGHT OR LEFT HAND BRACKET IS REQUIRED. ANY CHIPPING, GOUGING, OR OTHER WORK, TOOLS OR ANY OTHER INCIDENTALS NECESSARY TO EFFECT THE INSTALLATION OF BRIDGE MOUNTED SIGN BRACKETS ON CURBS, PARAPET WALLS, COPINGS OR OTHER LOCATIONS AS CALLED FOR IN PLANS WILL NOT BE PAID FOR DIRECTLY BUT SHALL BE CONSIDERED SUBSIDIARY TO THE ITEM "SMALL ROADSIDE SIGN SUPPORTS AND ASSEMBLIES".

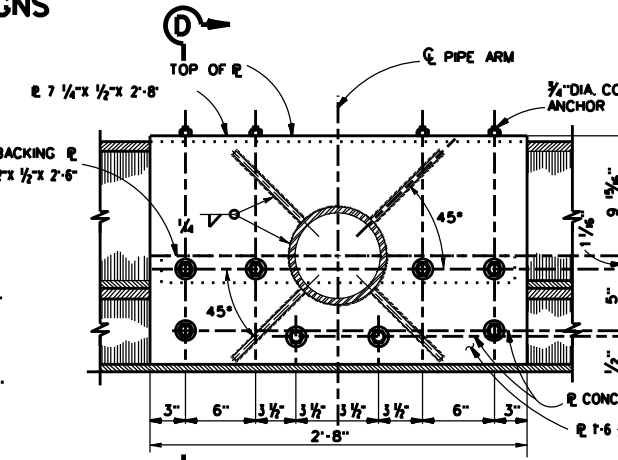
TABLE OF PIPE SIZES			
SIGN AREA S.F.	PIPE A SIZE	PIPE B SIZE	CORRESPONDING TYPE GROUND MOUNT
1-10	4.500" O.D. X 0.337" W.T.	3.500" O.D. X 0.300" W.T.	10 BWG (1) SA (P)
10-16	8.625" O.D. X 0.332" W.T.	4.500" O.D. X 0.337" W.T.	10 BWG (1) SA (T)
16-32	8.625" O.D. X 0.332" W.T.	6.625" O.D. X 0.280" W.T.	S80 (1) SA (T) S80 (1) SA (U) S80 (1) SA (U-1 EXT)
32-40	8.625" O.D. X 0.332" W.T.	6.625" O.D. X 0.432" W.T.	S80 (2) SA (P) S80 (1) SA (U-2 EXT)



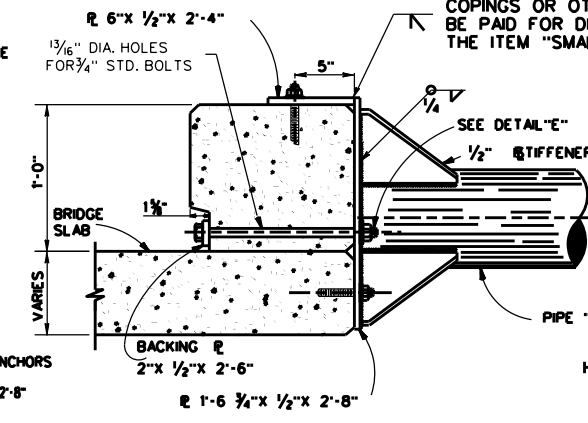
SECTION A-A



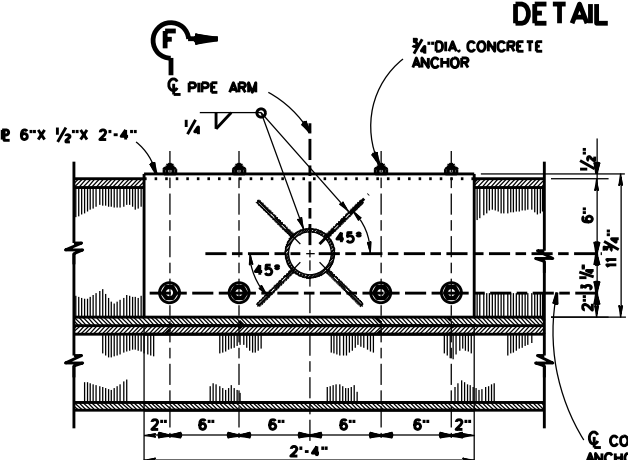
SECTION B-B



SECTION C-C

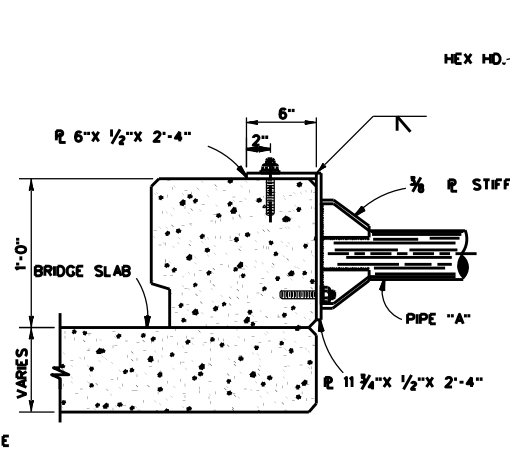


SECTION D-D



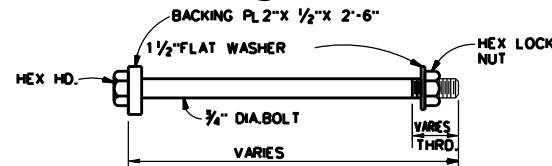
SECTION E-E

DETAIL "A"

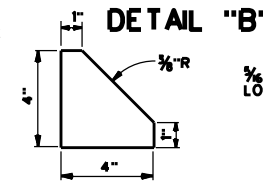


SECTION F-F

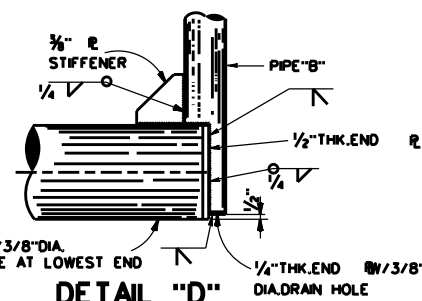
DETAIL "C"



DETAIL "E"

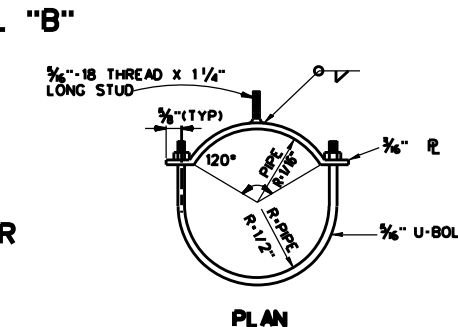


3/8" R STIFFENER

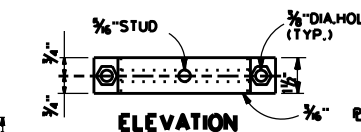


DETAIL "D"

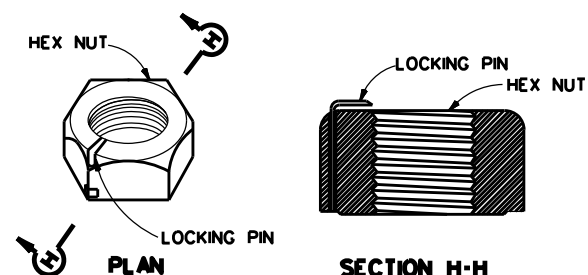
1/2" R STIFFENER



PLAN



LARGE PIPE CLAMP



LOCK NUT DETAIL

Texas Department of Transportation  
Houston District Standard

BRIDGE MOUNTING DETAILS (FOR SMALL ROADSIDE SIGNS)

SMD(BM-2)-24 (HOU)

FILE: SMD(BM-2)-24 (HOU).dgn	DN: TXDOT	CK: TXDOT	DW: TXDOT	CK: TXDOT
© TXDOT December 2024	CONT	SECT	JOB	HIGHWAY
REVISIONS				
12-24	DIST	COUNTY		SHEET NO.