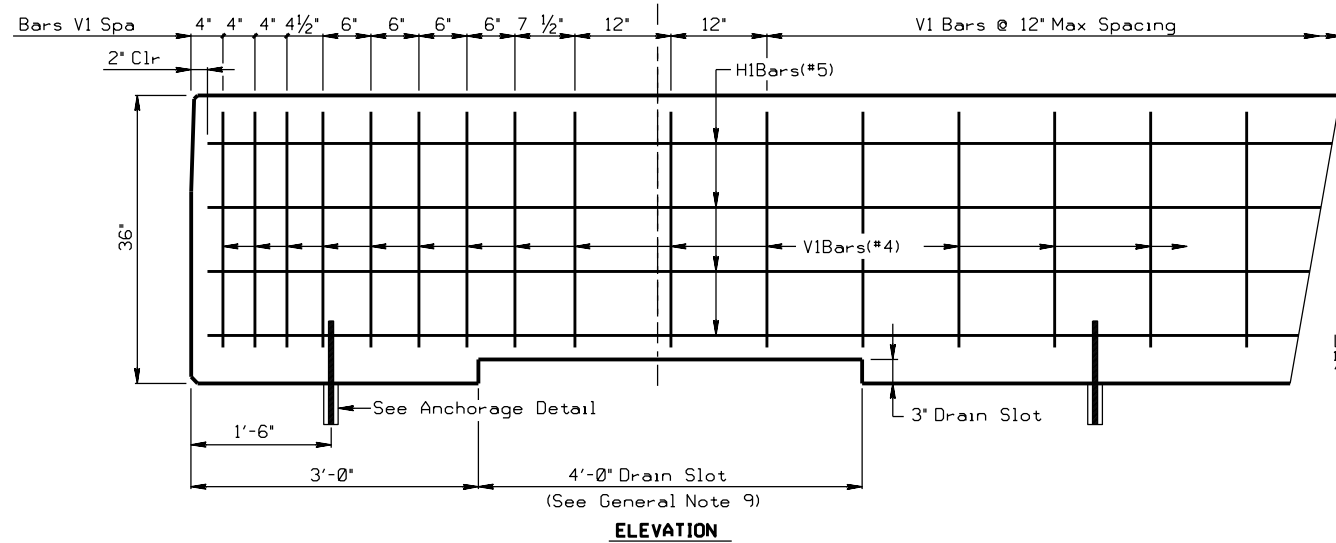
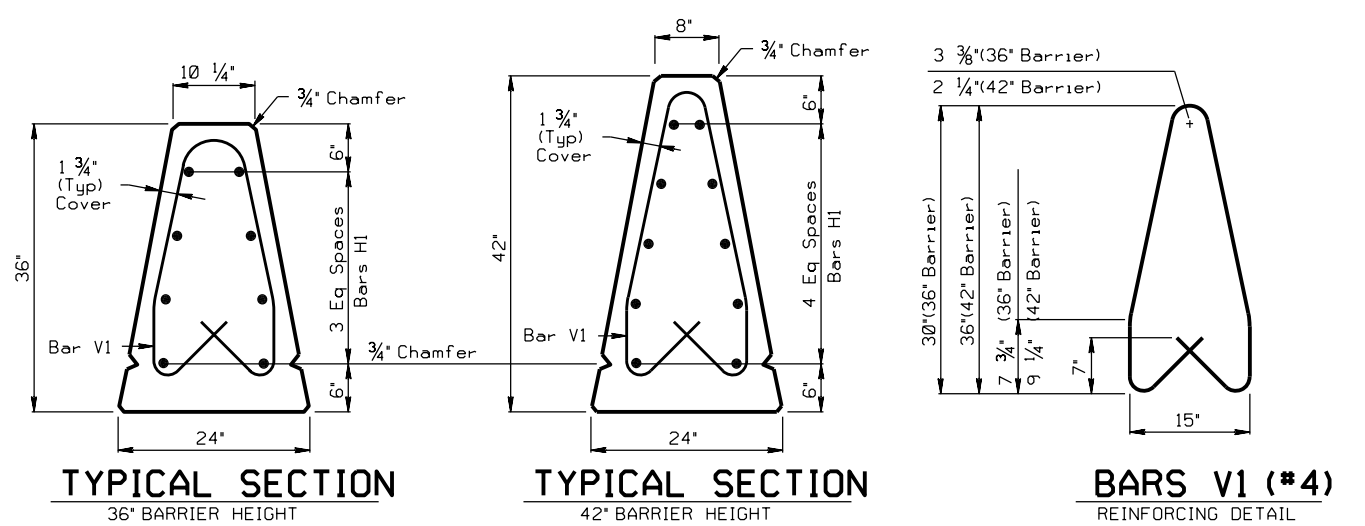
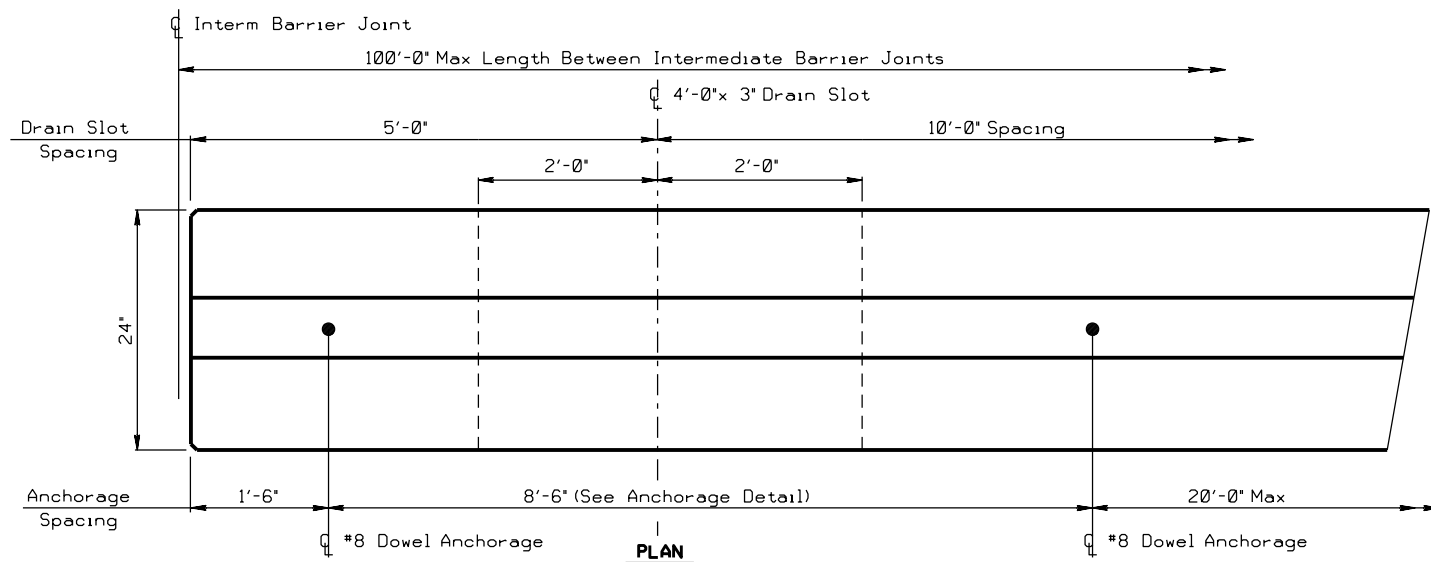
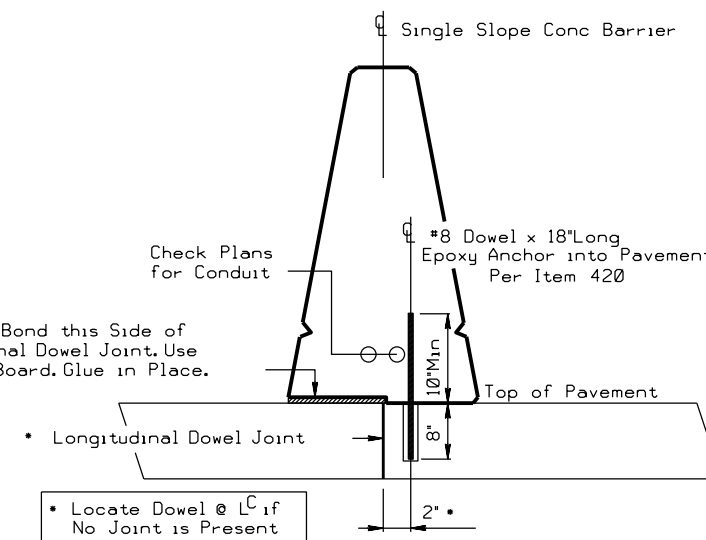


DISCLAIMER: The use of this standard is governed by the "Texas Engineering Practice Act". No warranty of any kind is made by TxDOT for any purpose whatsoever. TxDOT assumes no responsibility for the conversion of this standard to other formats or for incorrect results or damages resulting from its use.



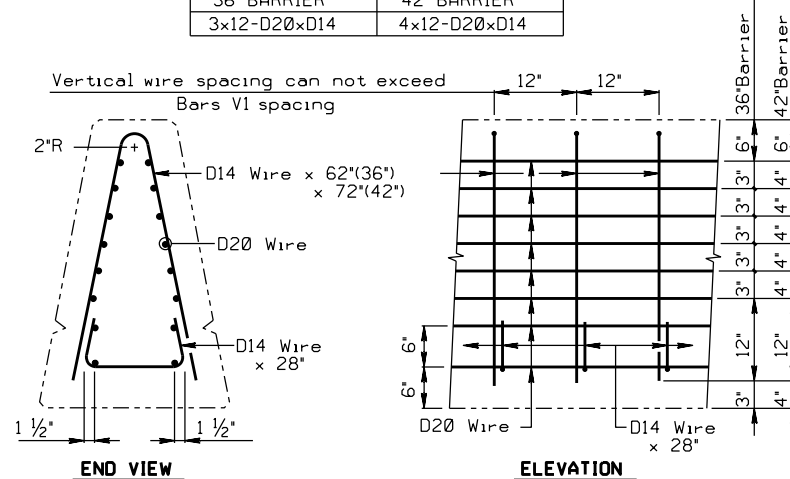
CAST-IN-PLACE SINGLE SLOPE CONCRETE BARRIER
36" Barrier Shown ~ 42" Barrier Similar



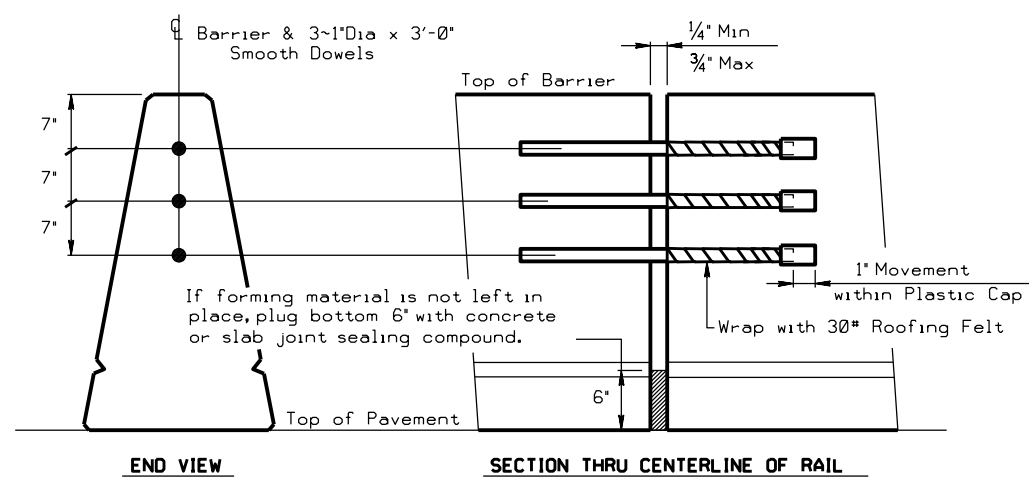
GENERAL NOTES:

- 1) Precast barrier is not allowed. Cast-in place barrier may be slip formed. Additional reinforcement may be tack welded to the upper two-thirds of the reinforcing cage to provide bracing.
- 2) All concrete will be Class C.
- 3) All reinforcing steel will be Grade 60, unless otherwise specified. All welded rebar is ASTM A706.
- 4) Chamfer all edges 3/4 inch.
- 5) The minimum bar splice length is 24 times the bar diameter.
- 6) Welded wire fabric may be used as an option to conventional reinforcement. All wire is 60 ksi yield strength.
- 7) Transitions to barrier height, as needed, will be determined by the Engineer. Changes in barrier height should not normally exceed 2 inches per 30 feet. Vertical steel will be uniformly transitioned throughout the variation in barrier height as directed by the Engineer.
- 8) Installation of anchorage dowels are not paid for directly. Installation is incidental to barrier bid items.
- 9) Drain slots may be used where shown elsewhere on the plans or as directed by the Engineer.

WELDED WIRE FABRIC	
36" BARRIER	42" BARRIER
3x12-D20xD14	4x12-D20xD14



WELDED WIRE FABRIC (OPTIONAL REINFORCING)



INTERMEDIATE BARRIER JOINT DETAIL

R = Radius
Dia = Diameter

		Houston District Standard	
SINGLE SLOPE CONCRETE BARRIER TYPE 2 (CAST-IN-PLACE)			
SSCB(2)-25 (HOU)			
FILE: SSCB(2)-25 (HOU).dgn	DN: TXDOT	CK: TXDOT	DW: TXDOT
© TXDOT February 2025	CONT	SECT	JOB
REVISIONS			
02-25-2024 Spec Updates	DIST	COUNTY	SHEET NO.

DATE:
FILE: