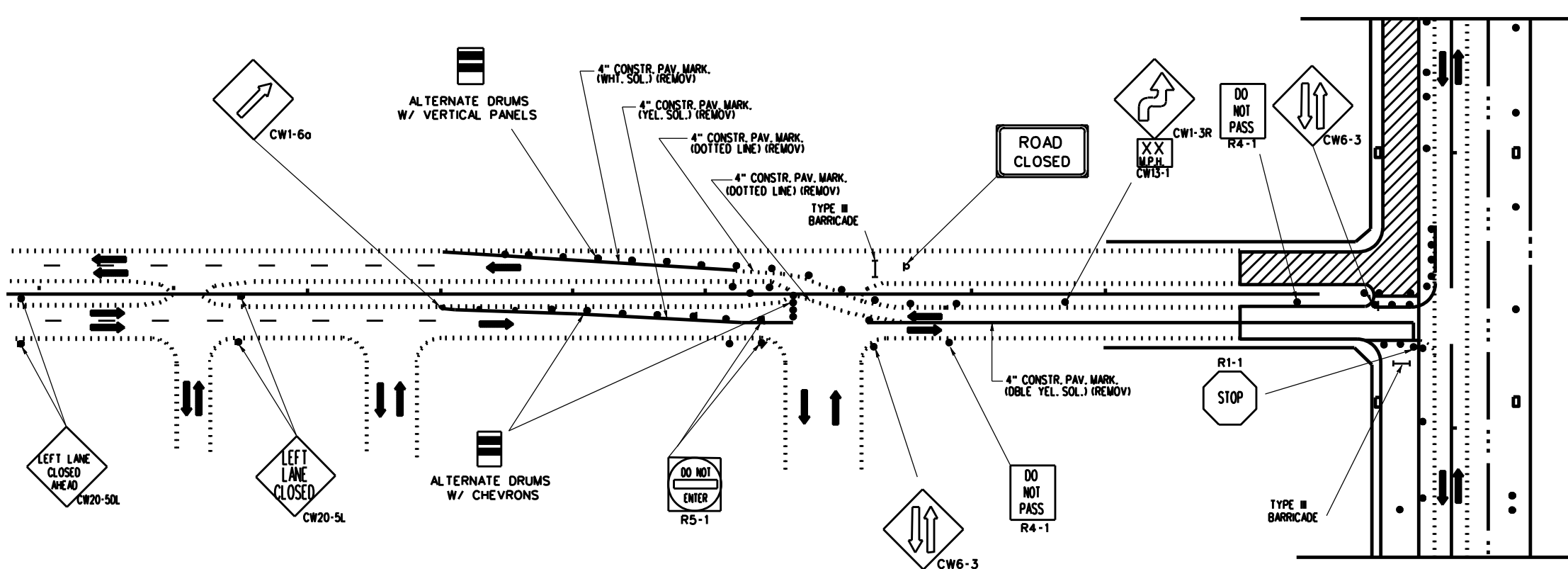
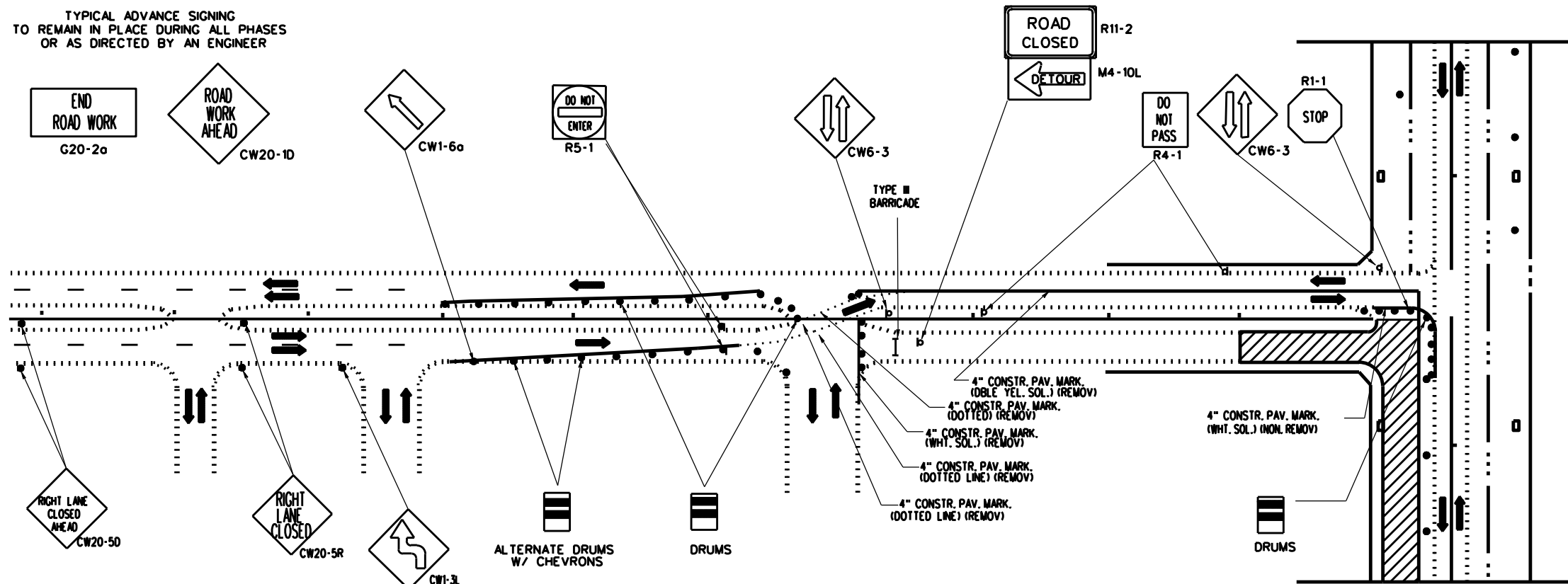


TYPICAL ADVANCE SIGNING
TO REMAIN IN PLACE DURING ALL PHASES
OR AS DIRECTED BY AN ENGINEER

DISCLAIMER: The use of this standard is governed by the "Texas Engineering Practice Act". No warranty of any kind is made by TxDOT for any purpose whatsoever. TxDOT assumes no responsibility for the conversion of this standard to other formats or for incorrect results or damages resulting from its use.



TYPICAL TRANSITION LENGTHS
AND
SUGGESTED MAXIMUM SPACING OF DEVICES

| POSTED SPEED | FORMULA | MINIMUM DESIRABLE TAPER LENGTHS (ft) | | | SUGGESTED MAX. SPAC. OF DEVICE | | MINIMUM SIGN SPACING * DISTANCE |
|--------------|--------------------------|--------------------------------------|------------|------------|--------------------------------|--------------|---------------------------------|
| | | 10' OFFSET | 11' OFFSET | 12' OFFSET | ON A TAPER | ON A TANGENT | |
| 30 | L * WS ² / 60 | 150' | 165' | 180' | 30' | 60'-75' | 120' |
| 35 | | 205' | 225' | 245' | 35' | 70'-90' | 160' |
| 40 | | 265' | 295' | 320' | 40' | 80'-100' | 240' |
| 45 | L * WS | 450' | 495' | 540' | 45' | 90'-110' | 320' |
| 50 | | 500' | 550' | 600' | 50' | 100'-125' | 400' |
| 55 | | 550' | 605' | 660' | 55' | 110'-140' | 500' |
| 60 | | 600' | 660' | 720' | 60' | 120'-150' | ⊙600' |
| 65 | | 650' | 715' | 780' | 65' | 130'-165' | ⊙700' |
| 70 | 700' | 770' | 840' | 70' | 140'-175' | ⊙800' | |

⊙ CONVENTIONAL ROADS ONLY
⊙ TAPER LENGTHS HAVE BEEN ROUNDED OFF.

CONSTRUCTION WARNING
SIGN SPACING

| POSTED SPEED (MPH) | "X" SIGN SPACINGS (FEET) |
|--------------------|--------------------------|
| 30 OR LESS | 120 |
| 35 | 120 |
| 40 | 240 |
| 45 | 320 |
| 50 | 400 |
| 55 | 500 |
| 60 | 600 |
| 65 | 700 |
| 70 | 800 |

LEGEND

- CONSTRUCTION AREA
- OPEN TO TRAFFIC

Texas Department of Transportation
Houston District Standard

BOULEVARD CLOSURES

TCPTC-25 (HOU)

| | | | | |
|--------------------------|-----------|-----------|-----------|-----------|
| FILE: TCPTC-25 (HOU).dgn | DN: TXDOT | CK: TXDOT | DW: TXDOT | CK: TXDOT |
| © TXDOT February 2025 | CONT | SECT | JOB | HIGHWAY |
| REVISIONS | | | | |
| 02-25-2024 Spec Updates | DIST | COUNTY | | SHEET NO. |

DATE:
FILE: