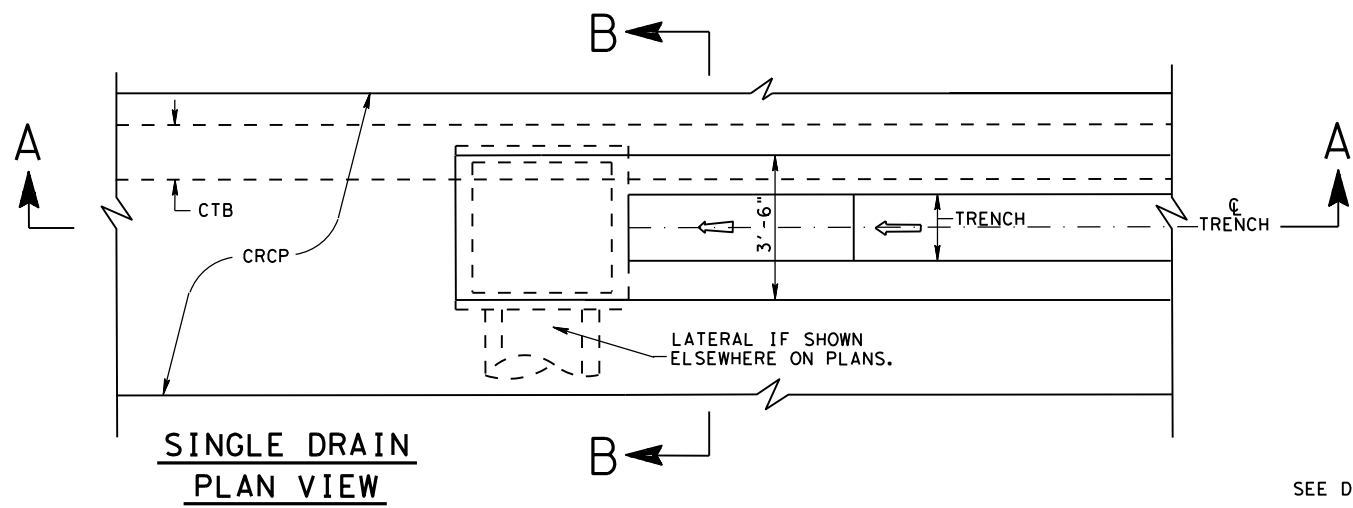
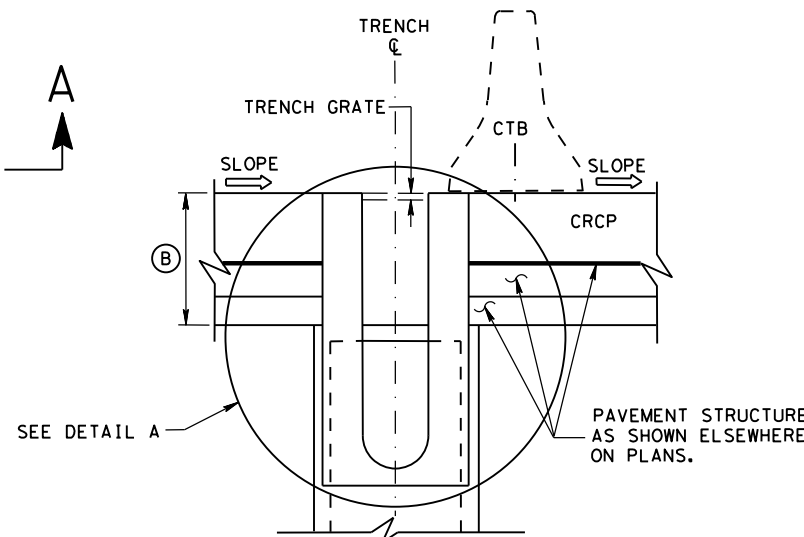


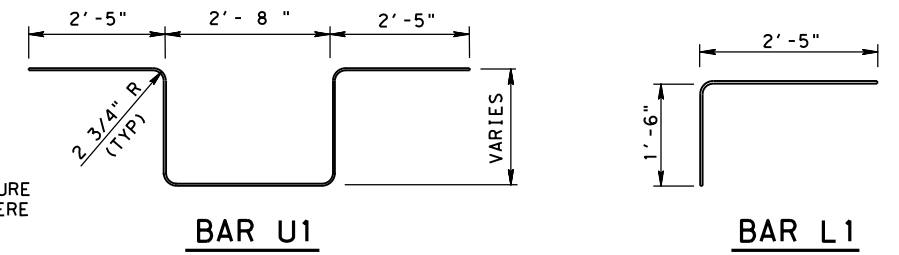
DISCLAIMER: This standard is governed by the "Texas Engineering Practice Act". No warranty of any kind is made by TxDOT for any purpose whatsoever. TxDOT assumes no responsibility for the conversion of this standard to other formats or for incorrect results or damages resulting from its use.



**SINGLE DRAIN
PLAN VIEW**



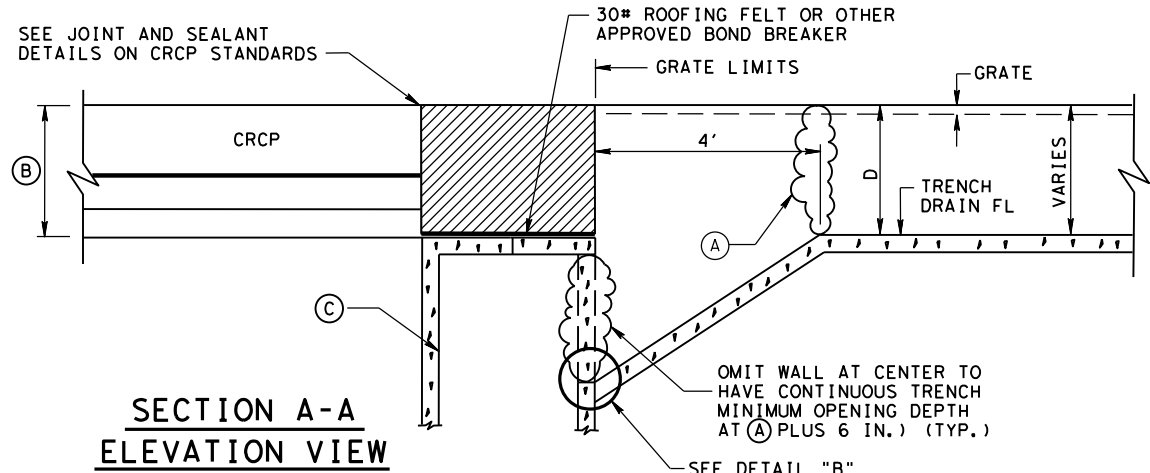
**SECTION B-B
ELEVATION VIEW**



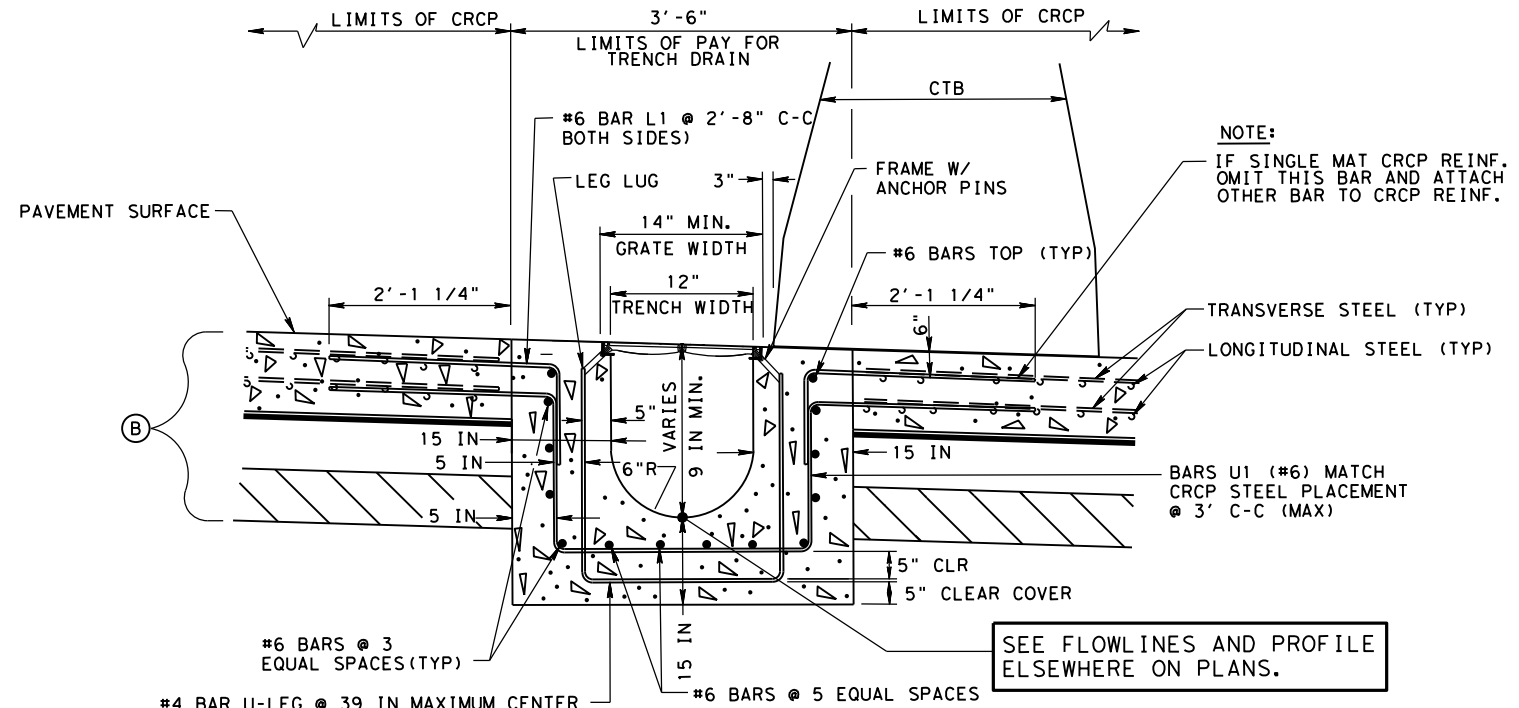
BAR U1

BAR L1

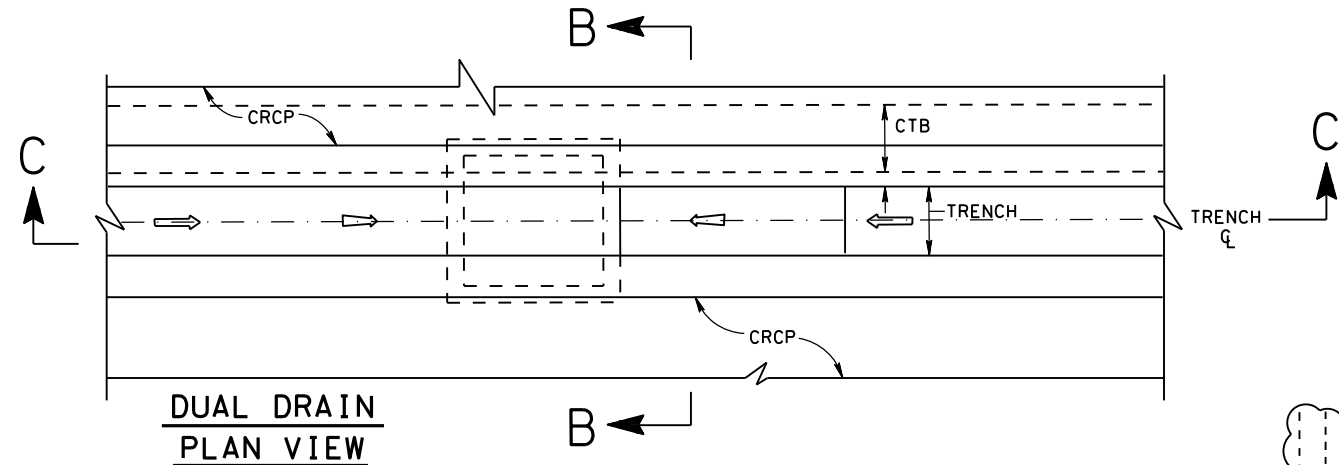
DESIGNER: PROVIDE A MINIMUM OF 66% OPENING OF GRATE AREA. FOR SAFETY FACTOR, USE 33% OPENING ON HYDRAULIC CALCULATIONS.



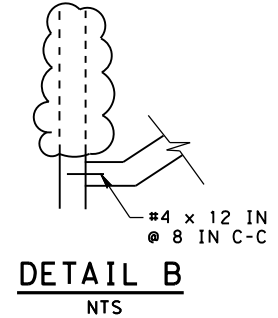
**SECTION A-A
ELEVATION VIEW**



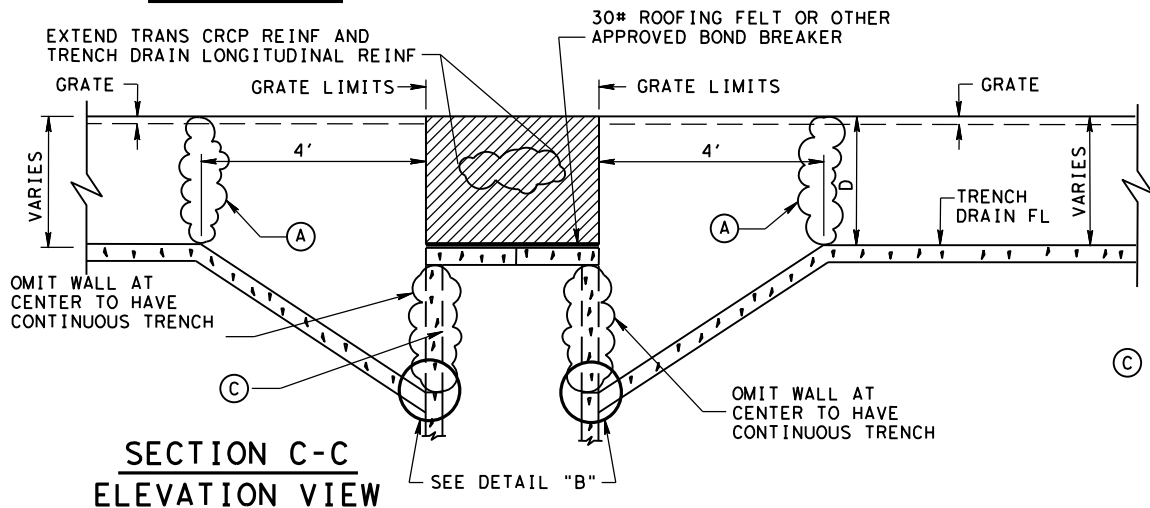
**DETAIL A
NTS**



**DUAL DRAIN
PLAN VIEW**



**DETAIL B
NTS**



**SECTION C-C
ELEVATION VIEW**

(C) REFER TO PROP TYPE A SPL INLET TRENCH DRAIN CONNECTION DETAILS "IL-A(SPL) TDC-25 (HOU)" OR OTHER STRUCTURE AS SHOWN ELSEWHERE ON PLANS.

CROSS SECTIONAL VIEW OF TRENCH DRAIN

LEGEND

- CRCP CONTINUOUSLY REINFORCED CONCRETE PAVEMENT
- (A) MAXIMUM TRENCH DEPTH
- (B) PAVEMENT STRUCTURE AS SHOWN ELSEWHERE ON PLANS
- SOLID CONCRETE NO TRENCH INCLUDED IN TRENCH DRAIN PAYMENT

- NOTES:**
- THIS STANDARD IS TO BE USED IN CONJUNCTION WITH ITEM 474, "LINEAR DRAINS."
 - PROPRIETARY TRENCH DRAIN SYSTEMS ARE ALLOWED. SUBMIT PRE-CONSTRUCTION DRAWINGS WITH ENOUGH DETAIL TO SHOW HOW TO INTEGRATE INTO THE PLAN DETAILS. SUBMITTALS SHALL MEET MINIMUM REQUIREMENTS, AREAS, AND DIMENSIONS.

**TRENCH DRAIN
DETAILS**

TDD-25 (HOU)

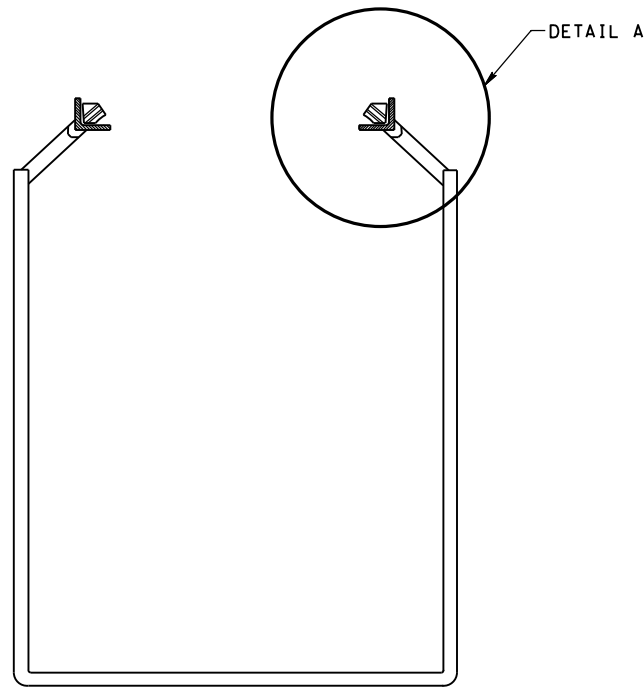
FILE: TDD-25 (HOU).DGN	DN: TxDOT	CK: TxDOT	DW: TxDOT	CK: TxDOT
© TxDOT May 2025	CONT	SECT	JOB	HIGHWAY
REVISIONS				
11/2011: ADDED MIN. TO 14" DIMENSION				
06/2012: ADDED CALLOUT				
03/2015: 2014 SPECS				
05/2025: 2024 Spec Updates				
DIST	COUNTY			SHEET NO.

NOT TO SCALE

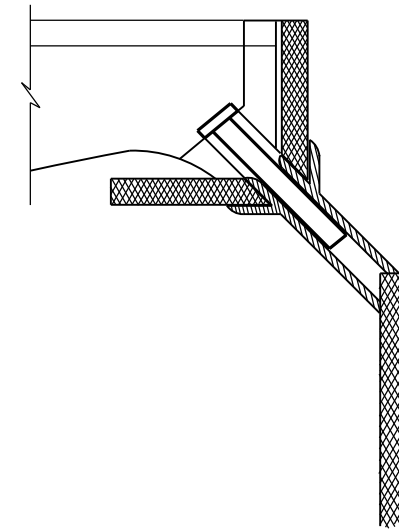
DATE:
FILE:

DISCLAIMER: This standard is governed by the "Texas Engineering Practice Act". No warranty of any kind is made by TxDOT for any purpose whatsoever. TxDOT assumes no responsibility for the conversion of this standard to other formats or for incorrect results or damages resulting from its use.

DATE:
FILE:



BAR U-LEG



DETAIL A
GRATE RETAINER
PIN-REMOVABLE
STAINLESS

		<i>Bridge Houston District Standard</i>	
<p>TRENCH DRAIN DETAILS</p> <p>TDD-25 (HOU)</p>			
FILE: TDD-25 (HOU).DGN	DN: TxDOT	CK: TxDOT	DW: TxDOT
© TxDOT May 2025	CONT	SECT	HIGHWAY
REVISIONS			
11/2011: ADDED MIN. TO 14" DIMENSION	DIST	COUNTY	SHEET NO.
06/2012: ADDED CALLOUT			
03/2015: 2014 SPECS			
05/2025: 2024 Spec Updates			

NOT TO SCALE