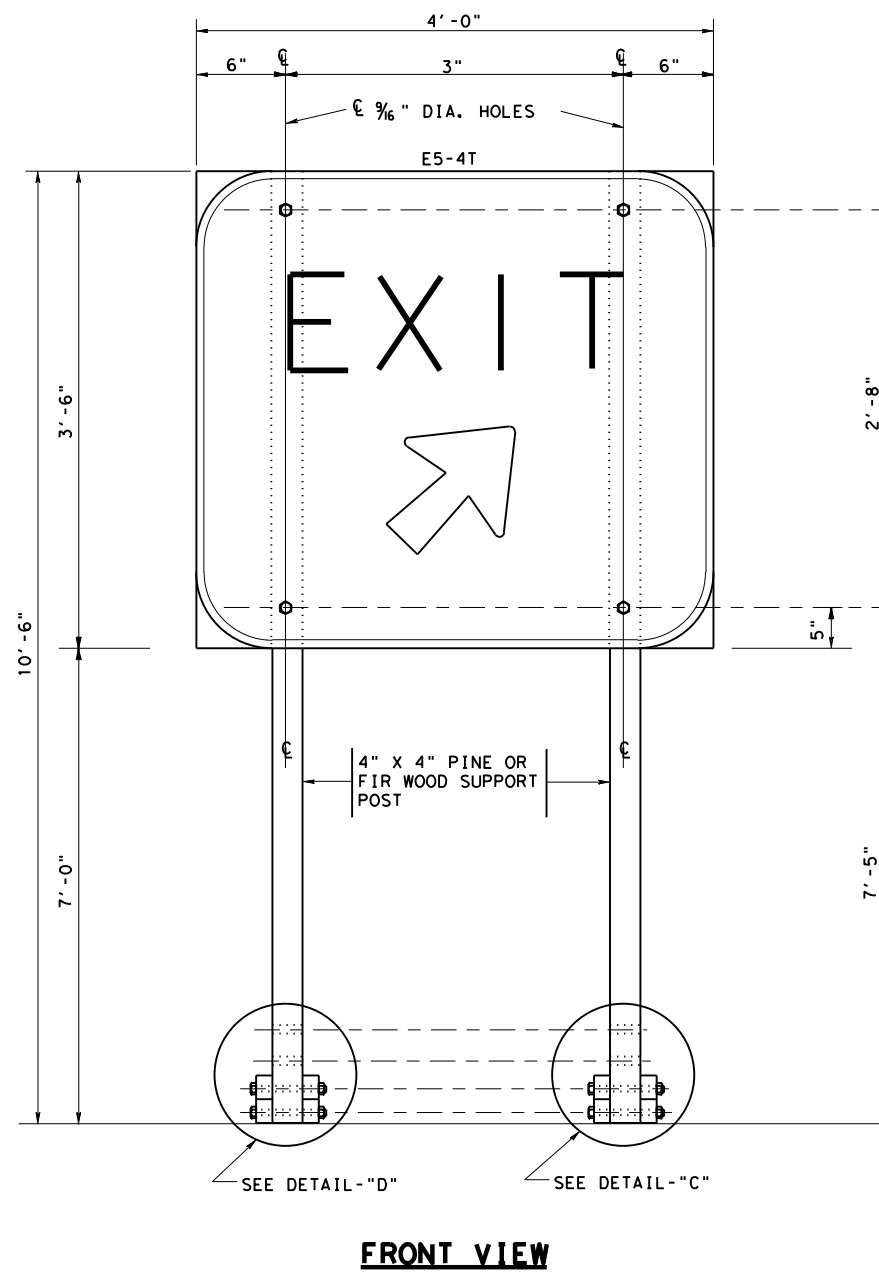
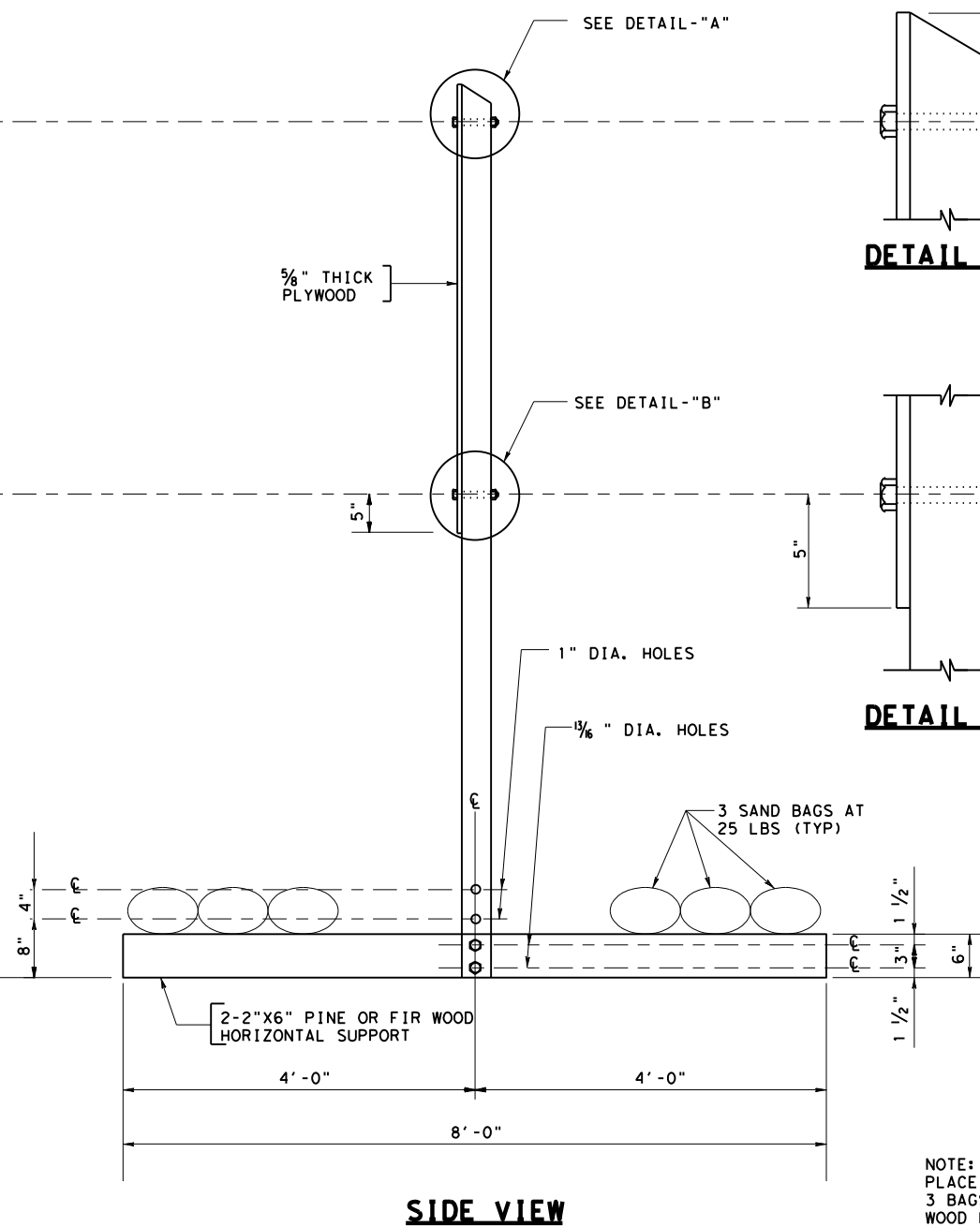


DISCLAIMER: The use of this standard is governed by the "Texas Engineering Practice Act". No warranty of any kind is made by TxDOT for any purpose whatsoever. TxDOT assumes no responsibility for the conversion of this standard to other formats or for incorrect results or damages resulting from its use.

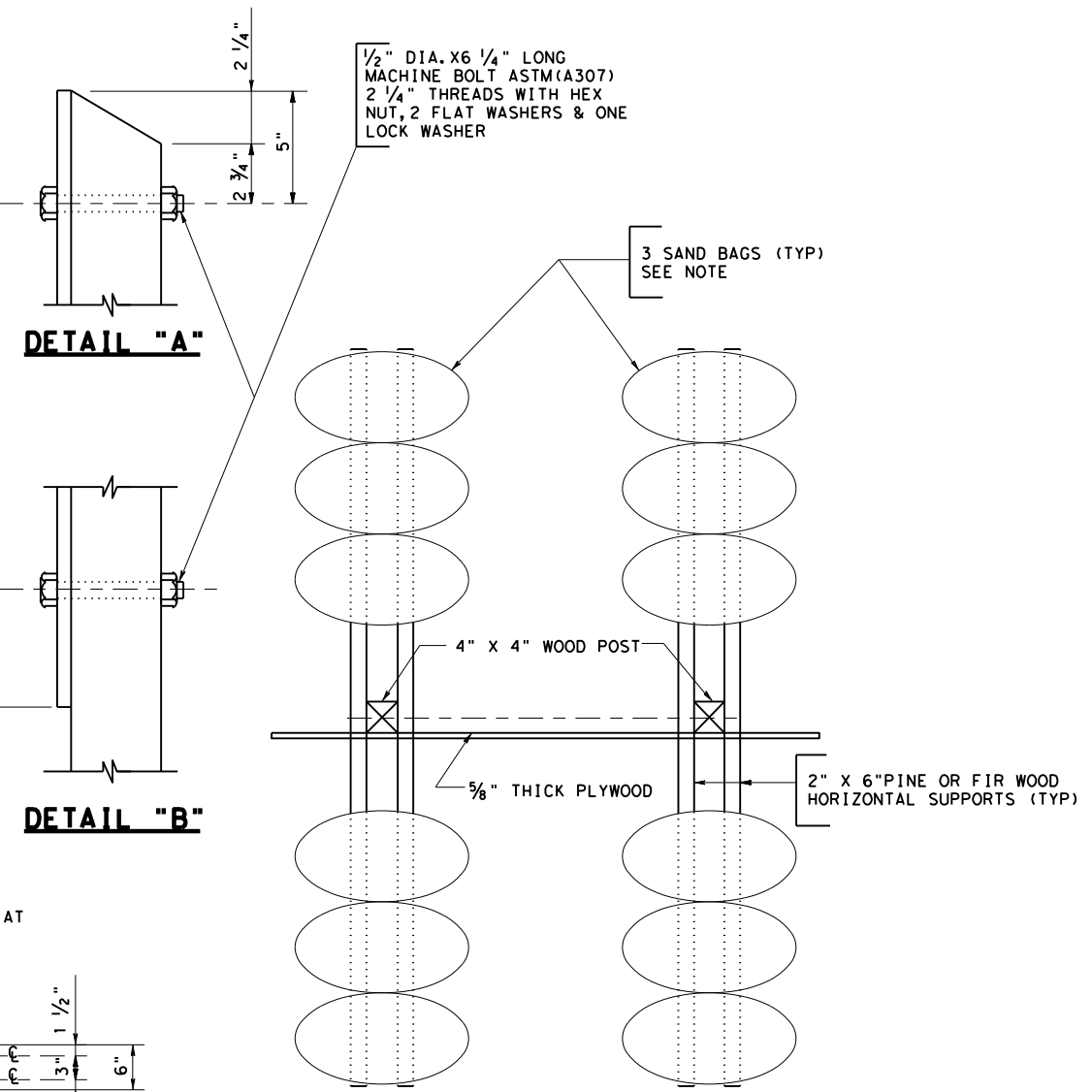
DATE:  
FILE:



**FRONT VIEW**



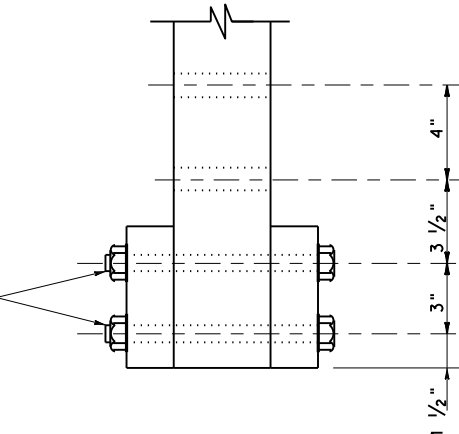
**SIDE VIEW**



**TOP VIEW**

NOTE:  
PLACE SAND BAGS EQUALING 75 LBS.  
3 BAGS AT 25 LBS. ON EACH END OF  
WOOD HORIZONTAL SUPPORTS.

3/4" DIA. X 10 1/2" LONG  
MACHINE BOLT ASTM(A307)  
2 1/2" THREADS WITH HEX  
NUT, 2 FLAT WASHERS & ONE  
LOCK WASHER



**DETAIL "C" AS SHOWN  
DETAIL "D" OPP. HAND**



**TEMPORARY EXIT GORE SIGN**

**TEGS-25 (HOU)**

FILE: TEGS-25 (HOU).dgn	DN: TXDOT	CK: TXDOT	DW: TXDOT	CR: TXDOT
© TXDOT June 2025	CONT	SECT	JOB	HIGHWAY
REVISIONS				
06-12-2025: 2024 Spec Updates	DIST	COUNTY	SHEET NO.	