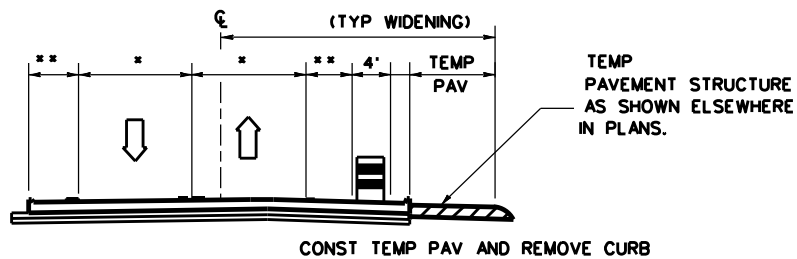
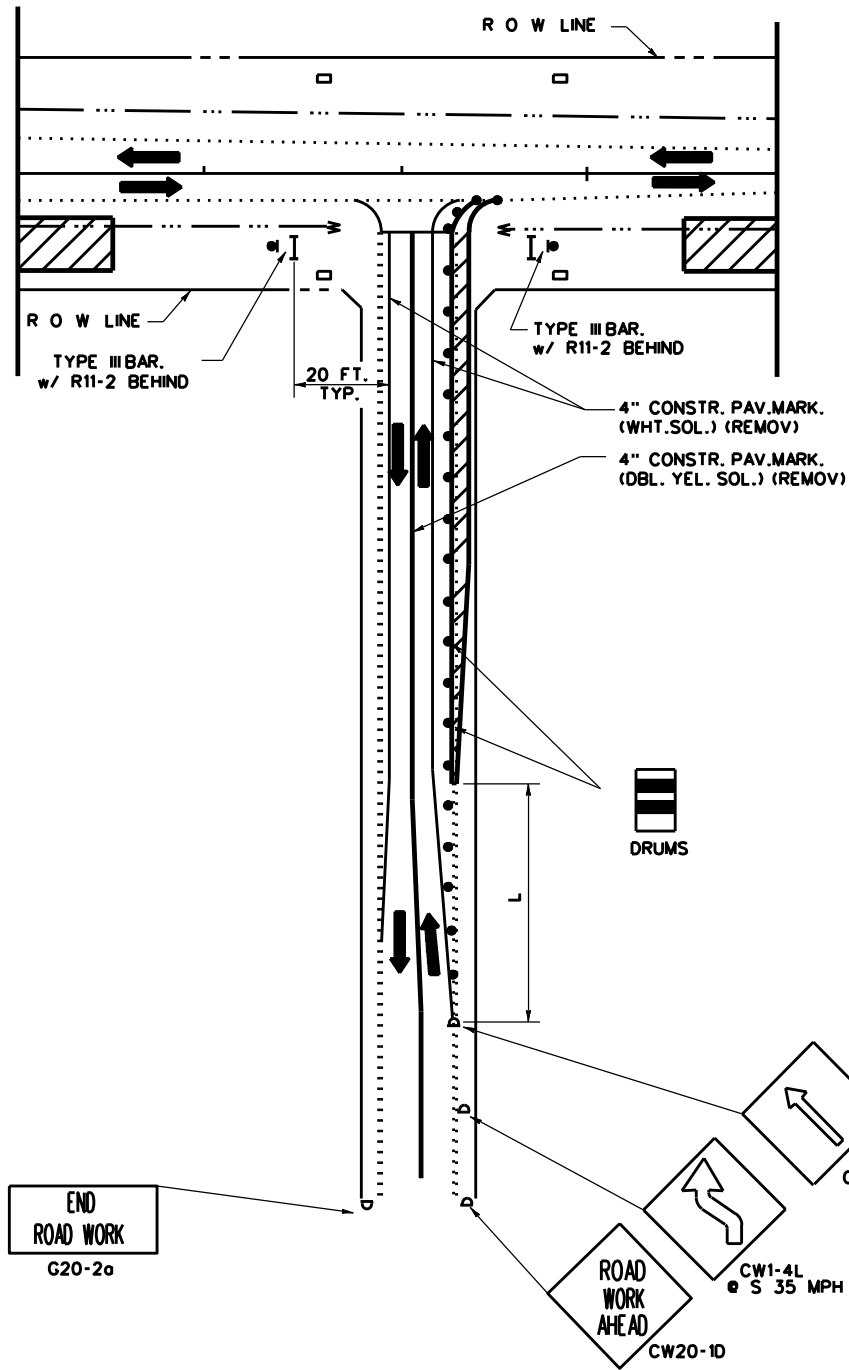
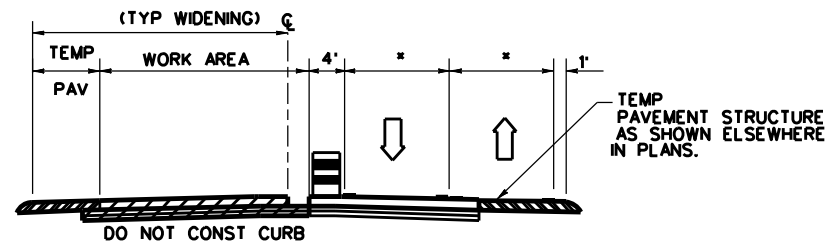
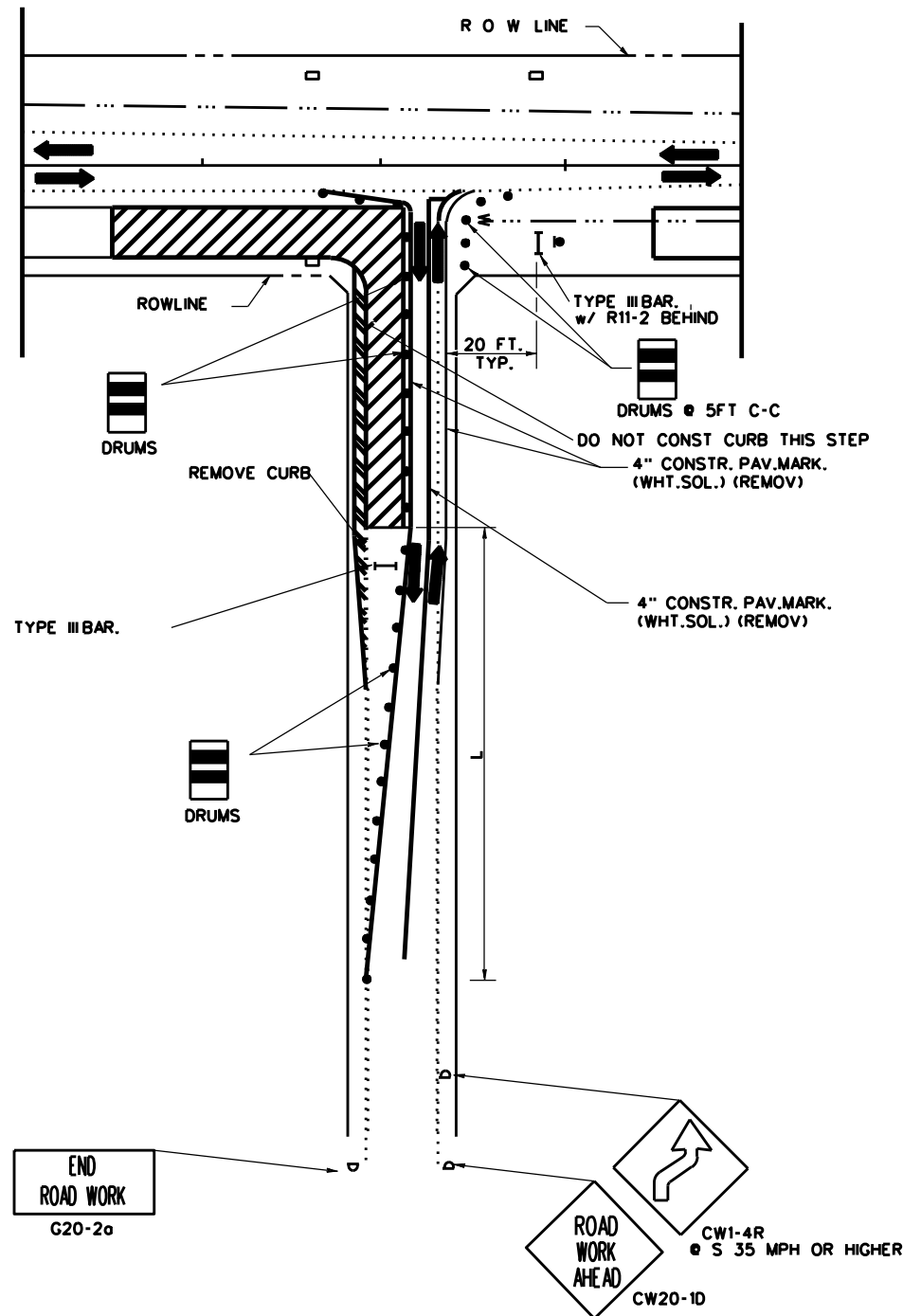


DISCLAIMER: The use of this standard is governed by the "Texas Engineering Practice Act". No warranty of any kind is made by TxDOT for any purpose whatsoever. TxDOT assumes no responsibility for the conversion of this standard to other formats or for incorrect results or damages resulting from its use.



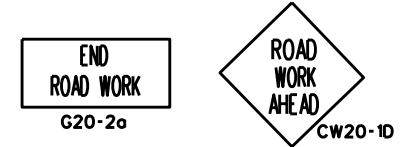
**STEP 1**

- CONST TEMP PAV AND REMOVE CURB
- \* 10 FT. MIN. 12 FT. DESIRABLE IF SPACE AVAILABLE.
  - \* IN CASES WHERE EXISTING SIDE STREETS HAVE LESS THAN 10 FT. LANE WIDTHS, PROVIDE LANE WIDTHS EQUAL OR GREATER THAN EXISTING.



**STEP 2**

TYPICAL ADVANCE SIGNING TO REMAIN PLACE DURING ALL PHASES OR AS DIRECTED BY ENGINEER



CONSTRUCTION WARNING SIGN SPACING

POSTED SPEED (MPH)	"X" SIGN SPACINGS (FEET)
30 OR LESS	120
35	160
40	240
45	320
50	400
55	500
60	600
65	700
70	800

TYPICAL TRANSITION LENGTHS AND SUGGESTED MAXIMUM SPACING OF DEVICES

POSTED SPEED	FORMULA	MINIMUM DESIRABLE TAPER LENGTHS (⊙)			SUGGESTED MAX. SPAC. OF DEVICE		MINIMUM SIGN SPACING * DISTANCE
		10' OFFSET	11' OFFSET	12' OFFSET	ON A TAPER	ON A TANGENT	
30	L * WS <sup>2</sup> / 60	150'	165'	180'	30'	60'-75'	120'
35		205'	225'	245'	35'	70'-90'	160'
40		265'	295'	320'	40'	80'-100'	240'
45	L * WS	450'	495'	540'	45'	90'-110'	320'
50		500'	550'	600'	50'	100'-125'	400'
55		550'	605'	660'	55'	110'-140'	500'
60		600'	660'	720'	60'	120'-150'	⊙600'
65		650'	715'	780'	65'	130'-165'	⊙700'
70	700'	770'	840'	70'	140'-175'	⊙800'	

⊙ CONVENTIONAL ROADS ONLY

⊙ TAPER LENGTHS HAVE BEEN ROUNDED OFF.

**LEGEND**

- CONSTRUCTION AREA
- TEMPORARY PAVEMENT
- OPEN TO TRAFFIC

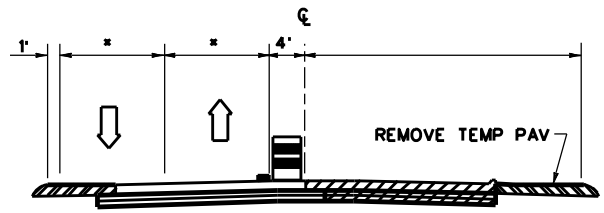
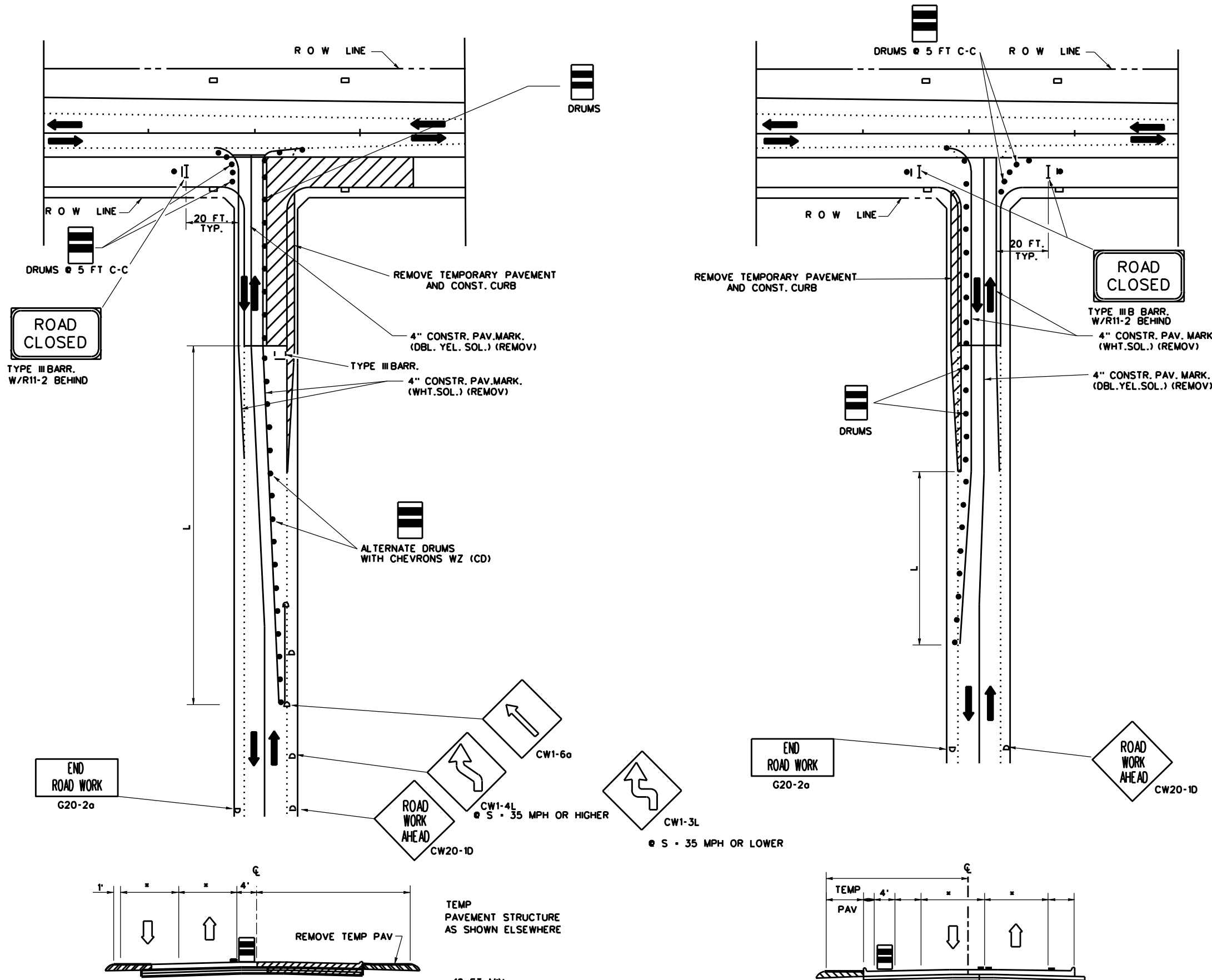
**TWO WAY ROADWAY INTERSECTION PHASING**

**TWRIP-25 (HOU)**

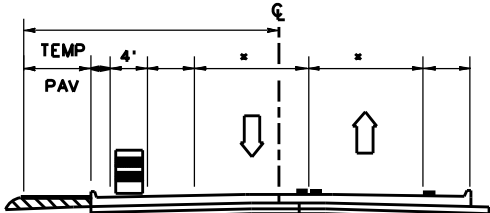
FILE: TWRIP-25 (HOU).dgn	DN: TXDOT	CK: TXDOT	DW: TXDOT	CK: TXDOT
© TXDOT February 2025	CONT	SECT	JOB	HIGHWAY
REVISIONS				
02-25-2024 Spec Updates	DIST	COUNTY		SHEET NO.

DISCLAIMER: The use of this standard is governed by the "Texas Engineering Practice Act". No warranty of any kind is made by TxDOT for any purpose whatsoever. TxDOT assumes no responsibility for the conversion of this standard to other formats or for incorrect results or damages resulting from its use.

DATE:  
FILE:



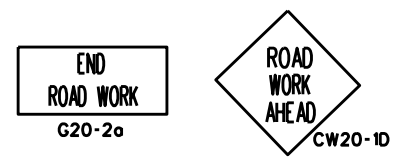
**STEP 3**



**STEP 4**

- 10 FT. MIN. 12 FT. DESIRABLE IF SPACE AVAILABLE.
- IN CASES WHERE EXISTING SIDE STREETS HAVE LESS THAN 10 FT. LANE WIDTHS, PROVIDE LANE WIDTHS EQUAL OR GREATER THAN EXISTING.

TYPICAL ADVANCE SIGNING TO REMAIN PLACE DURING ALL PHASES OR AS DIRECTED BY ENGINEER



CONSTRUCTION WARNING SIGN SPACING

POSTED SPEED (MPH)	"X" SIGN SPACINGS (FEET)
30 OR LESS	120
35	160
40	240
45	320
50	400
55	500
60	600
65	700
70	800

TYPICAL TRANSITION LENGTHS AND SUGGESTED MAXIMUM SPACING OF DEVICES

POSTED SPEED	FORMULA	MINIMUM DESIRABLE TAPER LENGTHS (ft)			SUGGESTED MAX. SPAC. OF DEVICE		MINIMUM SIGN SPACING * DISTANCE
		10' OFFSET	11' OFFSET	12' OFFSET	ON A TAPER	ON A TANGENT	
30	L · W <sup>2</sup> / 60	150'	165'	180'	30'	60'-75'	120'
35		205'	225'	245'	35'	70'-90'	160'
40		265'	295'	320'	40'	80'-100'	240'
45	L · W	450'	495'	540'	45'	90'-110'	320'
50		500'	550'	600'	50'	100'-125'	400'
55		550'	605'	660'	55'	110'-140'	500'
60		600'	660'	720'	60'	120'-150'	⊙600'
65		650'	715'	780'	65'	130'-165'	⊙700'
70	700'	770'	840'	70'	140'-175'	⊙800'	

- ⊙ CONVENTIONAL ROADS ONLY
- ⊙ TAPER LENGTHS HAVE BEEN ROUNDED OFF.

**LEGEND**

- CONSTRUCTION AREA
- TEMPORARY PAVEMENT
- OPEN TO TRAFFIC

**TWO WAY ROADWAY INTERSECTION PHASING**

**TWRIP-25 (HOU)**

FILE: TWRIP-25 (HOU).dgn	DN: TXDOT	CK: TXDOT	DW: TXDOT	CK: TXDOT
© TXDOT February 2025	CONT	SECT	JOB	HIGHWAY
REVISIONS				
02-25-2024 Spec Updates	DIST	COUNTY	SHEET NO.	