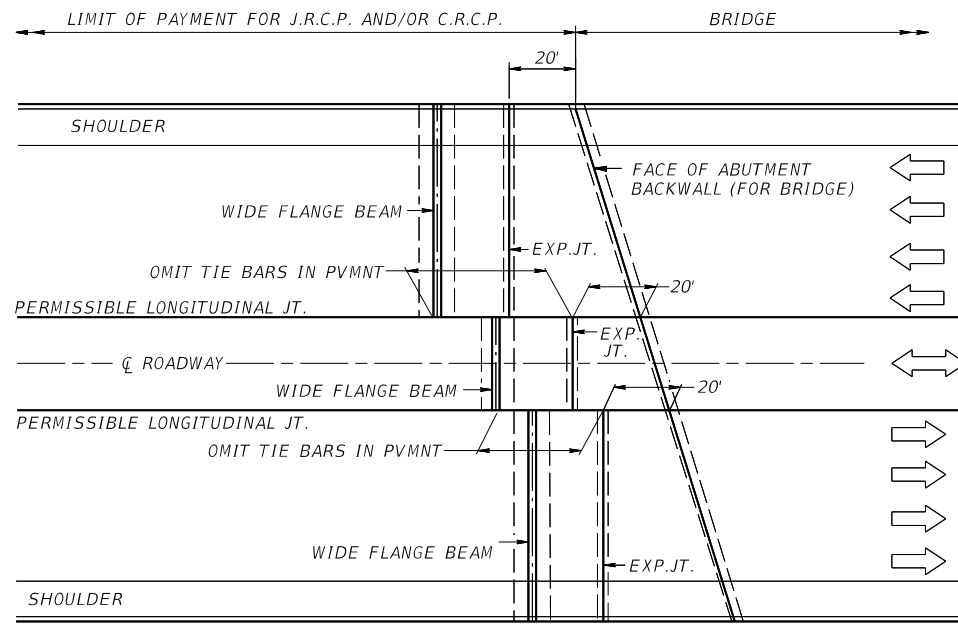
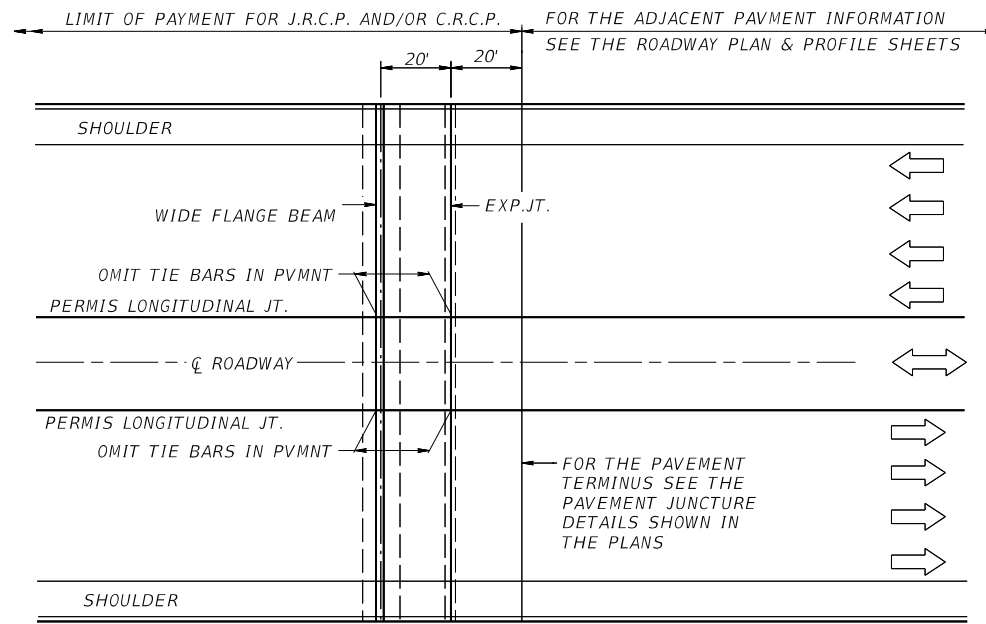


DISCLAIMER: This standard is governed by the "Texas Engineering Practice Act". No warranty of any kind is made by TxDOT for any purpose whatsoever. TxDOT assumes no responsibility for the conversion of this standard to other formats or for incorrect results or damages resulting from its use.



**TYPICAL ROADWAY LAYOUT
CONCRETE MEDIAN AND SHOULDERS
(AT BRIDGES)**



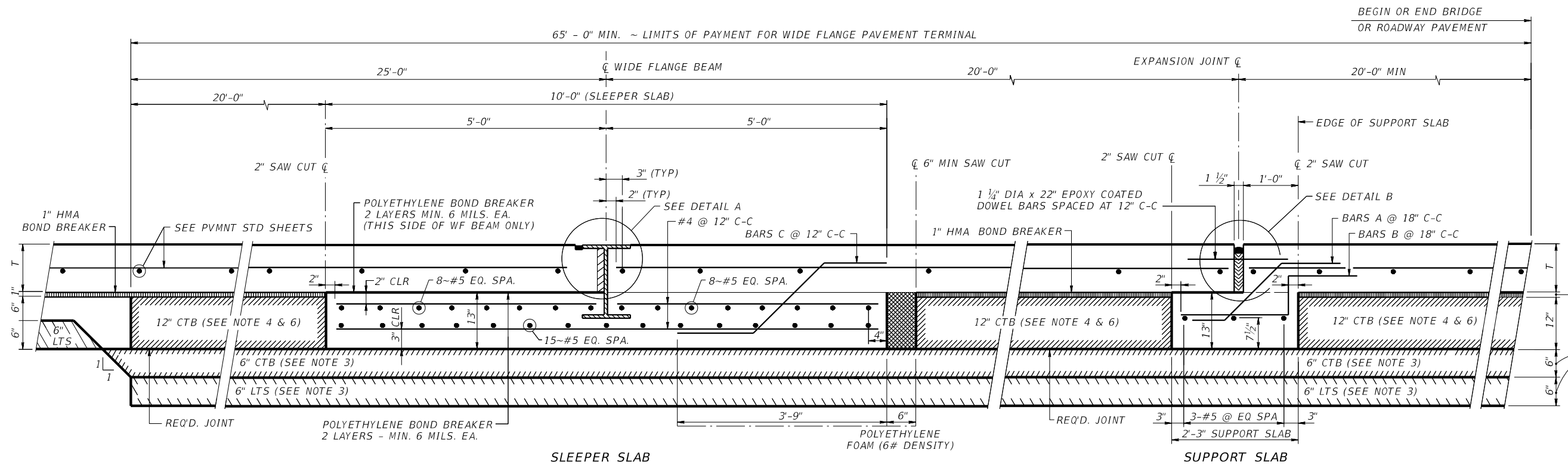
**TYPICAL ROADWAY LAYOUT
CONCRETE MEDIAN AND SHOULDERS**

NOTES

- BLOCK-OUT REQUIRED AT EACH END OF WIDE FLANGE BEAM ADJACENT TO 3/8 INCH END PLATE WHERE BLOCK-OUT IS PLACED ABUTTING CONCRETE PAVEMENT, RIPRAP OR STABILIZED BASE. THE BLOCKED OUT AREA WILL BE FILLED WITH POLYETHYLENE FOAM (6 POUND DENSITY). SEE SHEET 3 OF 3 FOR BLOCK-OUT DETAIL.
- FOR ADDITIONAL DETAILS ON REINFORCEMENT MEMBER QUANTITIES AND THE WIDE FLANGE BEAM SEE SHEET 2 OF 3.
- REPLACE 6 INCH LIME TREATMENT AND 6 INCH CEMENT TREATMENT WITH CEMENT STABILIZED BACK-FILL AT STRUCTURES WITH CEMENT STABILIZED BACKFILL EMBANKMENT. SEE "CEMENT STABILIZED BACKFILL EMBANKMENT" STANDARD SHEET FOR DETAILS.
- 12 INCH CEMENT STABILIZED BACKFILL MAY BE SUBSTITUTED FOR 12 INCH CTB, AT CONTRACTOR'S OPTION, ON APPLICABLE STRUCTURES WITH CEMENT STABILIZED BACKFILL EMBANKMENT.

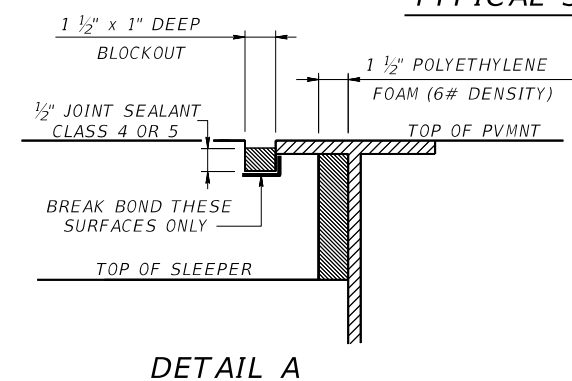
CTB - CEMENT TREATED BASE
LTS - LIME TREATED SUBGRADE OR BASE
CRCP - CONTINUOUSLY REINFORCED CONCRETE PAVEMENT
JRCP - JOINTED REINFORCED CONCRETE PAVEMENT
HMA - HOT MIX ASPHALT
T - PAVEMENT THICKNESS

① CONTRACTOR MAY USE REDWOOD BOARD AS ALTERNATIVE

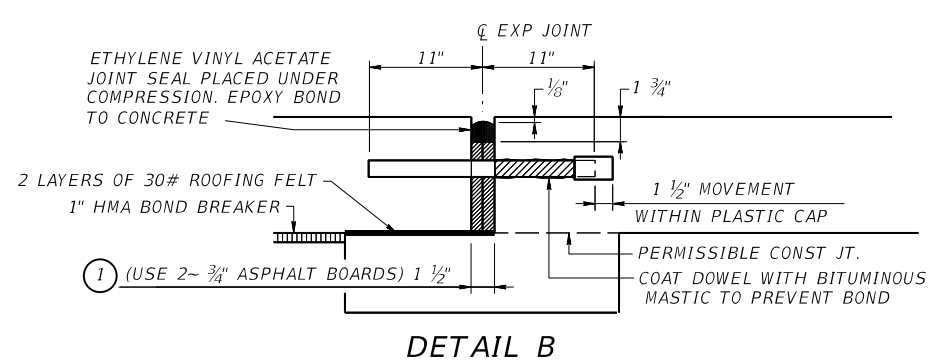


TYPICAL SECTION THRU TERMINAL ANCHORAGE @ SLEEPER SLAB & SUPPORT SLAB

FOR MORE DETAILS AND LIMITS OF PAY FOR CTB & LTS SEE ABUTMENT BACKFILL DIAGRAM DETAIL ON SHEET 2 OF 3 OR THE PAVEMENT JUNCTURE DETAILS AS SHOWN IN PLANS.



DETAIL A

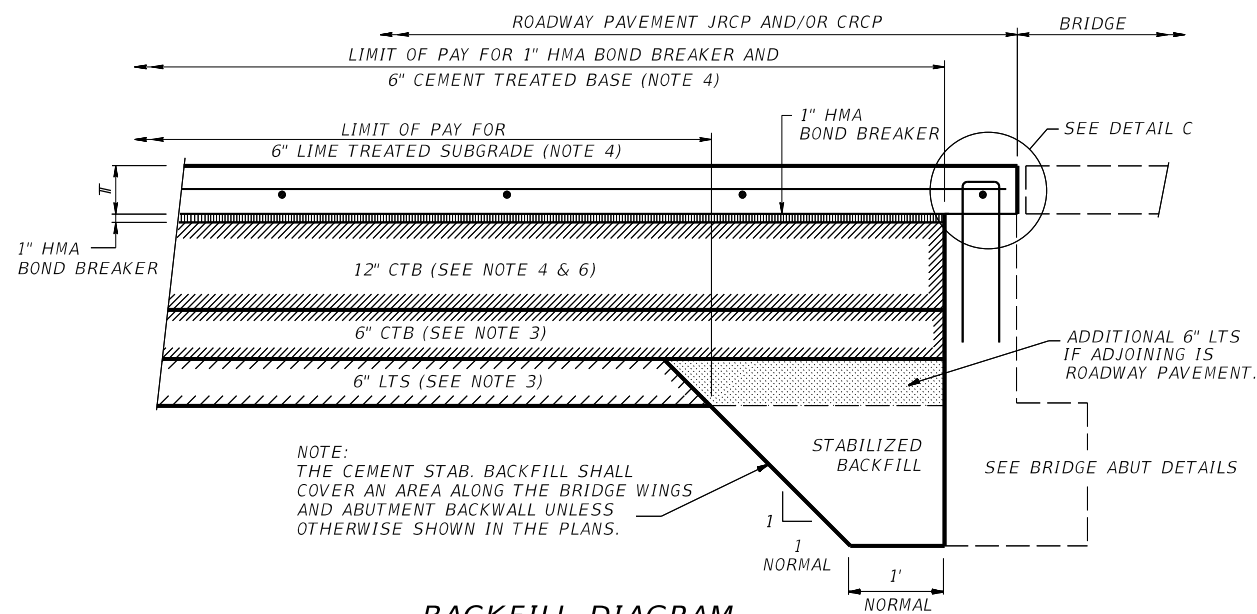


DETAIL B

WIDE FLANGE PAVEMENT TERMINALS FOR CONTINUOUSLY & JOINTED REINFORCED CONCRETE PAVEMENT DETAILS (FOR USE AT BRIDGE END OR PAVEMENT TERMINUS) WFPT-25 (HOU)			
FILE: WFPT-25(HOU).DGN	DN: TxDOT	CK: TxDOT	OW: TxDOT
©TxDOT April 2025	CONT	SECT	JOB
REVISIONS			HIGHWAY
04/2025: 2024 Spec Updates. Added Note 1			
DIST	COUNTY		SHEET NO.
HOU			

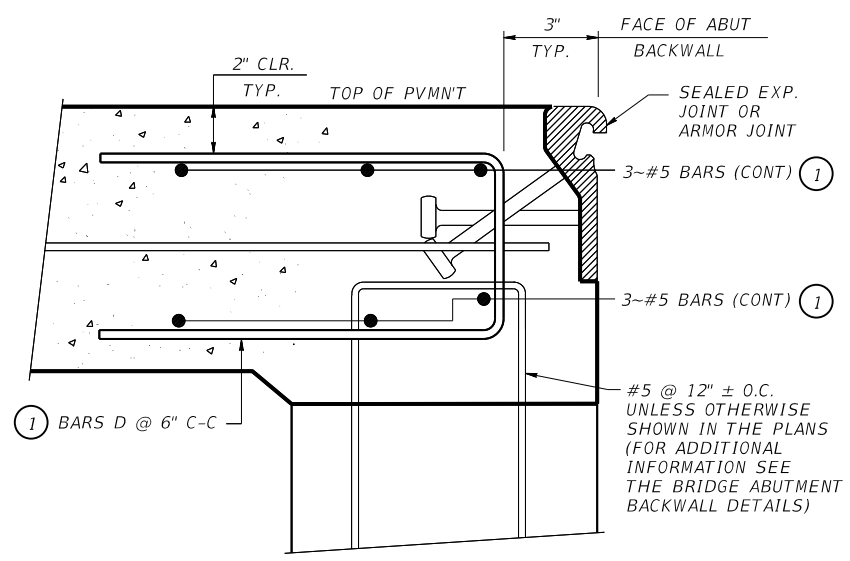
DATE: FILE:

DISCLAIMER: The use of this standard is governed by the "Texas Engineering Practice Act". No warranty of any kind is made by TxDOT for any purpose whatsoever. TxDOT assumes no responsibility for the conversion of this standard to other formats or for incorrect results or damages resulting from its use.



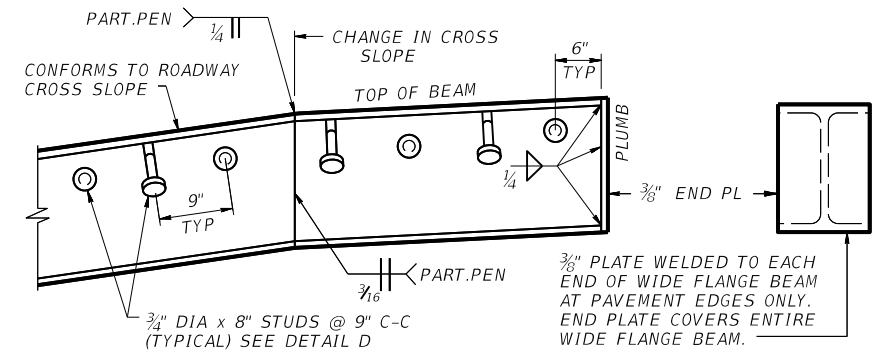
NOTE:
THE CEMENT STAB. BACKFILL SHALL COVER AN AREA ALONG THE BRIDGE WINGS AND ABUTMENT BACKWALL UNLESS OTHERWISE SHOWN IN THE PLANS.

BACKFILL DIAGRAM

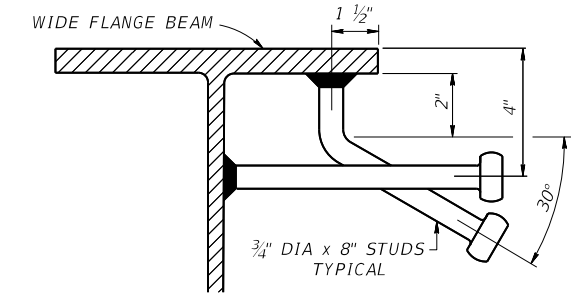


DETAIL C
(SHOWING ADDITIONAL REINFORCEMENT FOR ROADWAY PAVEMENT WITH SEALED EXPANSION JOINTS OR ARMOR JOINTS AT ABUTMENTS.)

① THE ADDITIONAL STEEL REQUIRED BY THE ABOVE DETAIL "C" SHALL NOT BE PAID FOR DIRECTLY, BUT SHALL BE CONSIDERED SUBSIDIARY TO THE ITEM, "CONCRETE PAVEMENT".



WIDE FLANGE DETAIL



NOTE:
STUDS SHALL BE ELECTRIC ARC END WELDED WITH COMPLETE FUSION. ANY STUD WHICH IS DISLODGED IN SHIPPING OR CAN BE DISLODGED BY HAMMER SHALL BE REPLACED.

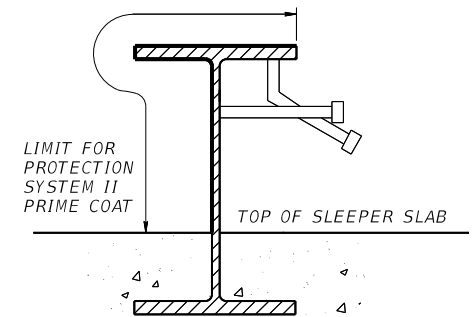
DETAIL D

TABLE OF BEAM SIZES	
PAVEMENT THICKNESS	WIDE FLANGE BEAM DESIGNATION
8"-9 1/2"	W14 X 68
10"-11 1/2"	W16 X 89
12"-13"	W18 X 97
14" & 15"	W21 X111

NOTES: (CONT)

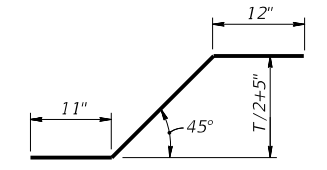
- THIS STANDARD WILL BE USED WITH SPECIAL SPECIFICATION 3003 "CONCRETE PAVEMENT WIDE FLANGE TERMINALS". THIS ITEM WILL BE MEASURED BY THE LINEAR FOOT OF WIDE FLANGE BEAM COMPLETE IN PLACE.
- WIDE FLANGE BEAM, SUPPORT SLAB, SLEEPER SLAB, 12 INCHES OF CEMENT TREATED BASE, POLYETHYLENE BONDBREAKER AND ANY EXCAVATION NECESSARY WILL NOT BE PAID FOR DIRECTLY, BUT WILL BE CONSIDERED SUBSIDIARY TO SPECIAL SPECIFICATION ITEM, "CONCRETE PAVEMENT WIDE FLANGE TERMINALS".
- POLYETHYLENE FOAM (6 POUND DENSITY), SAW CUTS, EXPANSION JOINTS, EPOXY COATED DOWEL AND EXPANSION JOINT MATERIALS WILL NOT BE PAID FOR DIRECTLY BUT SHALL BE CONSIDERED SUBSIDIARY TO ITEM 360.
- THE CONCRETE PAVEMENT, 1 INCH HMA BONDBREAKER, 6 INCH PORTLAND CEMENT TREATED BASE AND 6 INCH LIME TREATED SUBGRADE WILL BE PAID FOR UNDER THE APPROPRIATE BID ITEMS.
- SHEAR CUTTING OF DOWEL BARS IS PROHIBITED.
- EPOXY COAT DOWEL BARS PER SPECIFICATION ITEM 440.
- CEMENT STABILIZED BACKFILL IS REQUIRED AT ALL ABUTMENTS.

CTB - CEMENT TREATED BASE
LTS - LIME TREATED SUBGRADE OR BASE
CRCP - CONTINUOUSLY REINFORCED CONCRETE PAVEMENT
JRCP - JOINTED REINFORCED CONCRETE PAVEMENT
HMA - HOT MIX ASPHALT
T - PAVEMENT THICKNESS

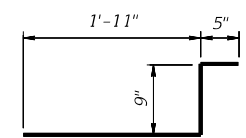


WIDE FLANGE PAINTING DETAIL

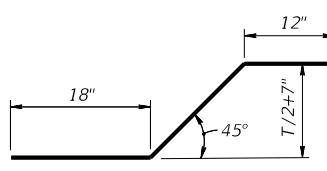
SEE "TABLE OF BEAM SIZES"



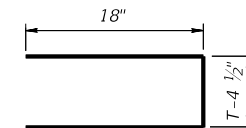
BARS A (#4)



BARS B (#4)



BARS C (#4)



BARS D (#4)

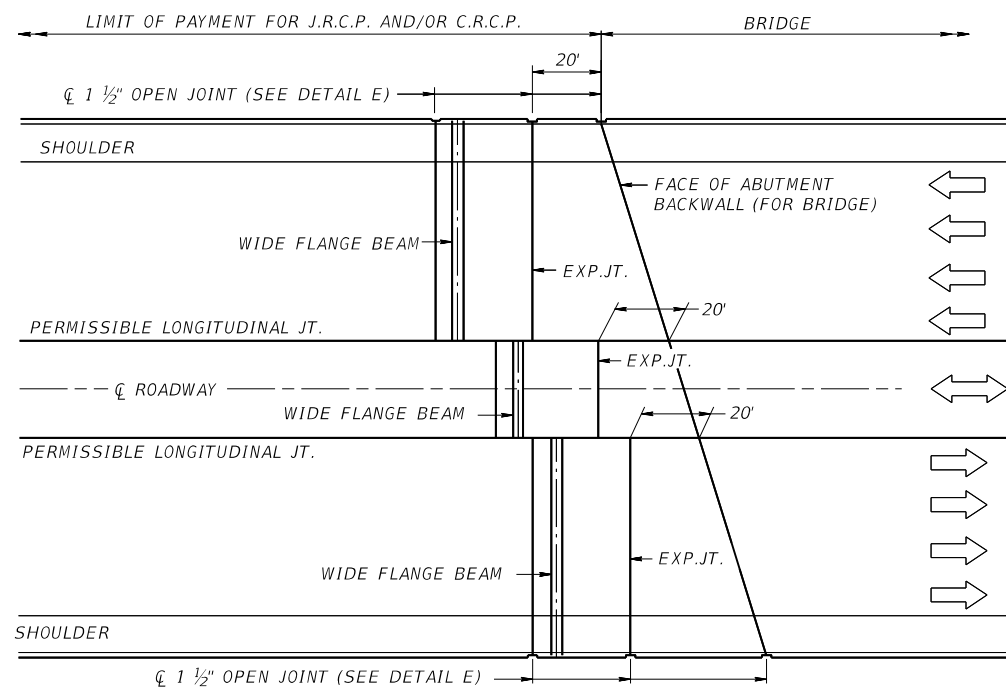
ESTIMATED QUANTITIES (FOR CONTRACTOR'S INFORMATION ONLY)						
ITEM	PAVEMENT THICKNESS					
	8" THRU 10"	10 1/2" THRU 12"	12 1/2" THRU 13"	14"	15"	
SLEEPER SLAB	CONCRETE	0.40 CY/LF	0.40 CY/LF	0.40 CY/LF	0.40 CY/LF	0.40 CY/LF
	REINFORCING STEEL	49.1 LBS/LF	49.3 LBS/LF	49.6 LBS/LF	49.7 LBS/LF	49.8 LBS/LF
SUPPORT SLAB	CONCRETE	0.09 CY/LF	0.09 CY/LF	0.09 CY/LF	0.09 CY/LF	0.09 CY/LF
	REINFORCING STEEL	6.3 LBS/LF	6.4 LBS/LF	6.5 LBS/LF	6.6 LBS/LF	6.6 LBS/LF
12" CEMENT TREATED BASE		1.95 CY/LF (BASED ON JOINTS BEING NORMAL TO THE PAVEMENT CENTERLINE)				

Texas Department of Transportation **Bridge Houston District Standard**

WIDE FLANGE PAVEMENT TERMINALS
FOR CONTINUOUSLY & JOINTED REINFORCED CONCRETE PAVEMENT DETAILS
(FOR USE AT BRIDGE END OR PAVEMENT TERMINUS)
WFPT-25 (HOU)

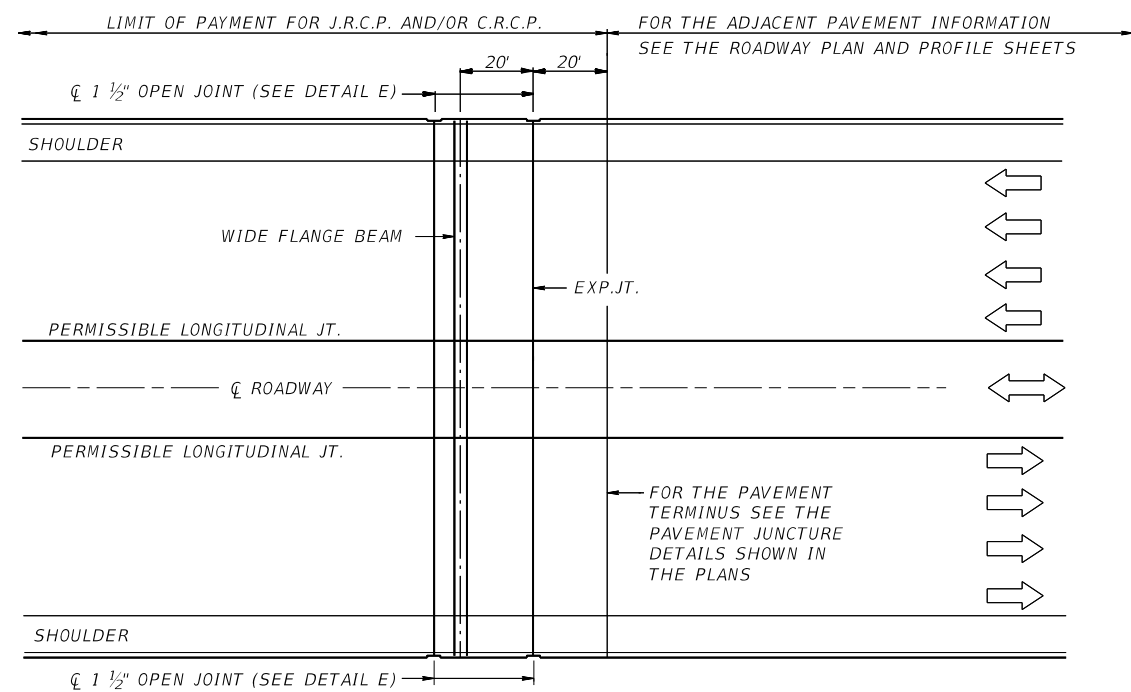
FILE: WFPT-25(HOU).DGN	DN: TxDOT	CK: TxDOT	OW: TxDOT	CK: TxDOT
©TxDOT April 2025	CONT	SECT	JOB	HIGHWAY
04/2025: 2024 Spec Updates.	REVISIONS		SHEET NO.	
DIST	COUNTY			
HOU				

DISCLAIMER: The use of this standard is governed by the "Texas Engineering Practice Act". No warranty of any kind is made by TxDOT for any purpose whatsoever. TxDOT assumes no responsibility for the conversion of this standard to other formats or for incorrect results or damages resulting from its use.



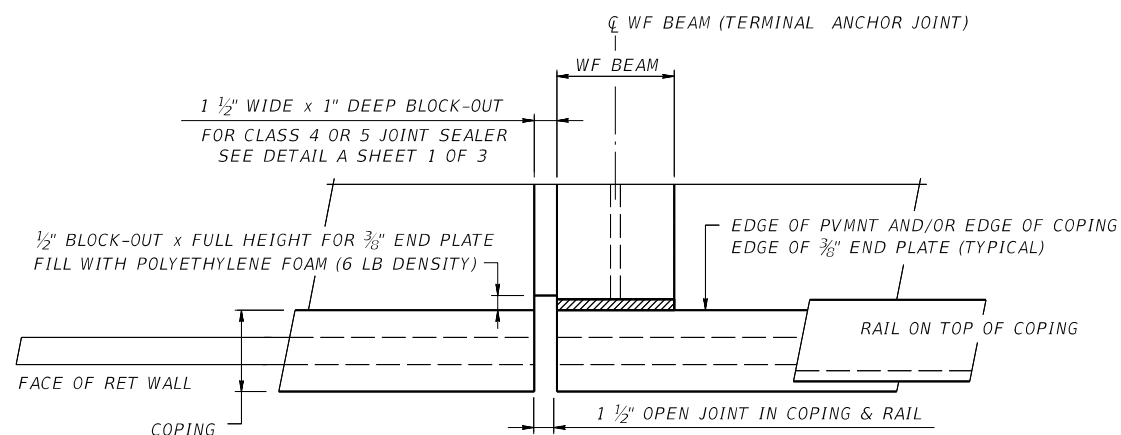
PLAN

SHOWING OPEN JOINT LAYOUT

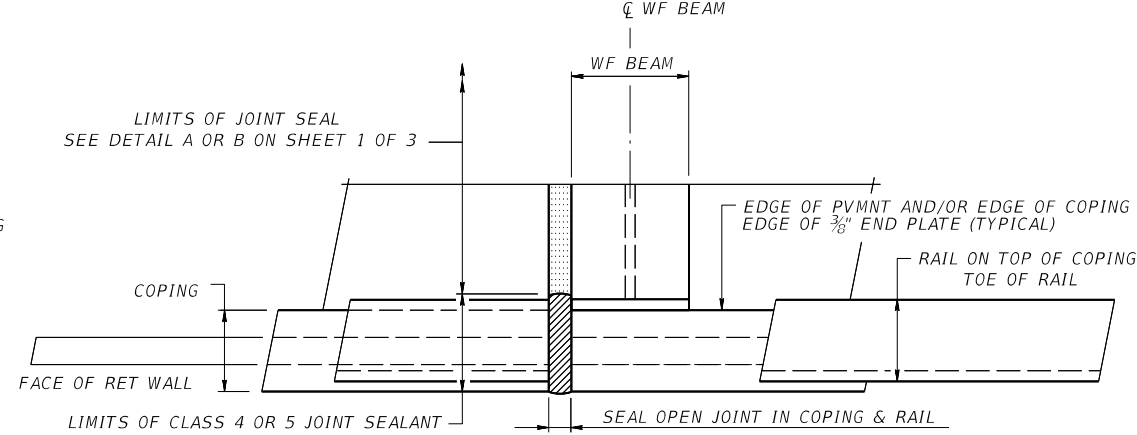


PLAN

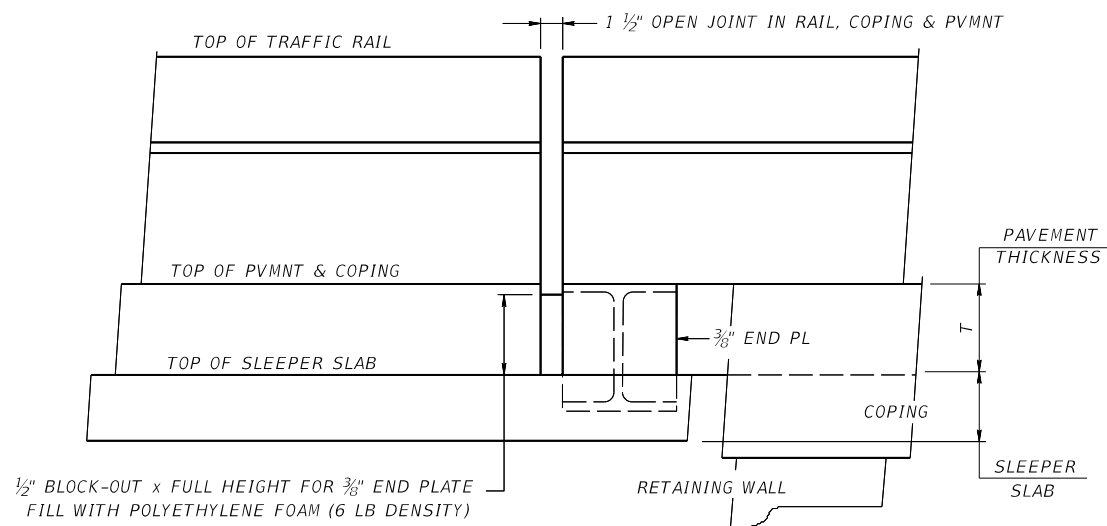
SHOWING OPEN JOINT LAYOUT



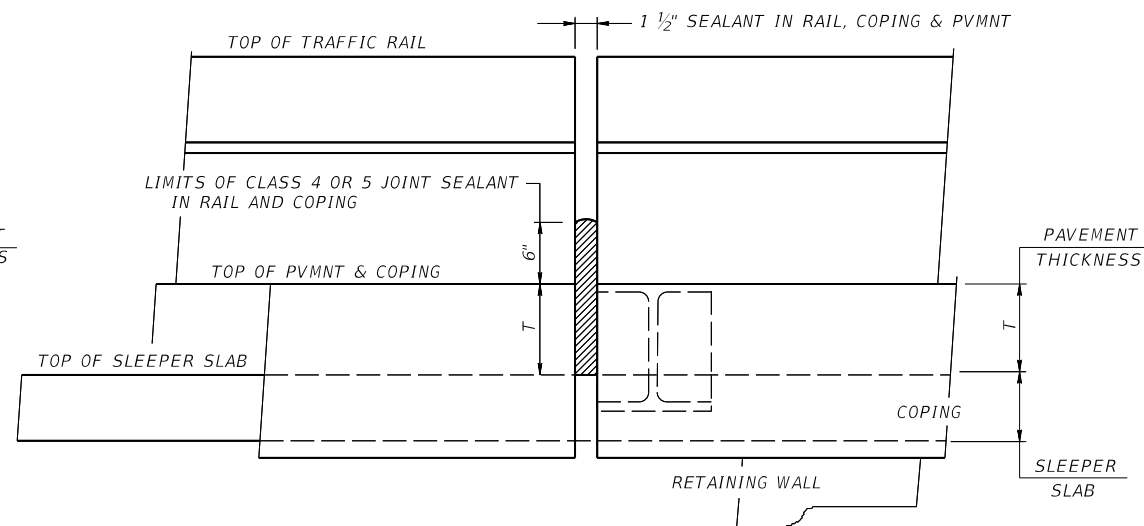
PLAN SHOWING OPEN JOINTS & BLOCK-OUT



PLAN SHOWING JOINT SEALANT



ELEVATION SHOWING OPEN JOINTS & BLOCK-OUT



ELEVATION SHOWING JOINT SEALANT

DETAIL E

SHOWN @ WIDE FLANGE - ALL OTHER JOINTS SIMILAR



WIDE FLANGE PAVEMENT TERMINALS

FOR CONTINUOUSLY & JOINTED REINFORCED CONCRETE PAVEMENT DETAILS (FOR USE AT BRIDGE END OR PAVEMENT TERMINUS)

WFPT-25 (HOU)

FILE: WFPT-25(HOU).DGN	DN: TxDOT	CK: TxDOT	DW: TxDOT	CK: TxDOT
©TxDOT April 2025	CONT	SECT	JOB	HIGHWAY
REVISIONS				
04/2025: 2024 Spec Updates.	DIST	COUNTY		SHEET NO.
	HOU			

DATE: FILE: