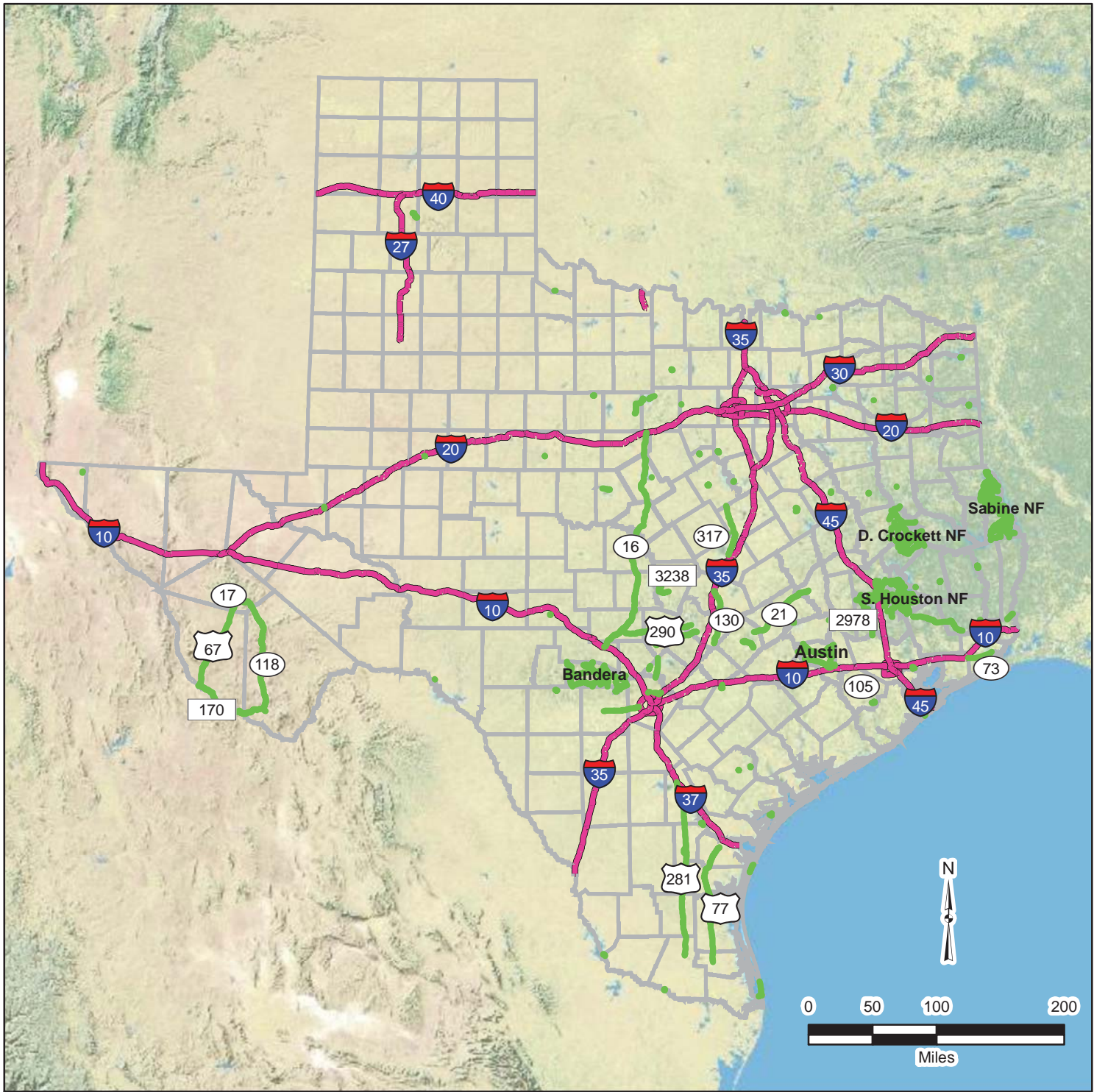


# Prohibition of Outdoor Advertising Signs on Certain Highways



## Transportation Code, Chapter 391 Highway Beautification on Interstate and Primary Highways



DISCLAIMER:  
Copyright 2011  
Texas Department of Transportation  
Notice  
This map was produced for internal use  
within the Texas Department of Transportation.  
Accuracy is limited to the validity of available  
data as of December 31, 2010.

Albers Map Projection  
North American Datum of 1983  
Texas Statewide Mapping System  
Sources: TPP Division and ROW Division  
Base Maps compiled, developed and maintained by the  
Information Systems Division using data provided by the  
Transportation Planning and Programming Division

1 inch equals 110.48 miles

Author: TxDOT  
ROW Division  
Outdoor Advertising

Contact: Tony Segura 512.416.2916

SUBCHAPTER I. PROHIBITION OF SIGNS ON CERTAIN HIGHWAYS

Sec. 391.252. PROHIBITED COMMERCIAL SIGNS.

(a) A person may not erect a commercial sign that is adjacent to and visible from:

- (1) U.S. Highway 290 between the western city limits of the city of Austin and the eastern city limits of the city of Fredericksburg;
- (2) State Highway 317 between the northern city limits of the city of Belton to the southern city limits of the city of Valley Mills;
- (3) State Highway 16 between the northern city limits of the city of Kerrville and Interstate Highway 20;
- (4) U.S. Highway 77 between State Highway 186 and State Highway 44;
- (5) U.S. Highway 281 between:
  - (A) State Highway 186 and Interstate Highway 37, exclusive of the segment of U.S. Highway 281 located in the city limits of Three Rivers; and
  - (B) the southern boundary line of Comal County and State Highway 306;
- (6) State Highway 17 between State Highway 118 and U.S. Highway 90;
- (7) State Highway 67 between U.S. Highway 90 and Farm-to-Market Road 170;
- (8) Farm-to-Market Road 170 between State Highway 67 and State Highway 118;
- (9) State Highway 118 between Farm-to-Market Road 170 and State Highway 17;
- (10) State Highway 105 between the western city limits of the city of Sour Lake to the eastern city limits of the city of Cleveland;
- (11) State Highway 73 between the eastern city limits of the city of Winnie to the western city limits of the city of Port Arthur;
- (12) State Highway 21 between the southern city limits of the city of College Station and U.S. Highway 290;
- (13) a highway located in:
  - (A) the Sabine National Forest;
  - (B) the Davy Crockett National Forest; or

- (C) the Sam Houston National Forest;
- (14) Segments 1 through 4 of State Highway 130;
- (15) a highway in Bandera County that is part of the state highway system;
- (16) Farm-to-Market Road 3238 beginning at State Highway 71 and any extension of that road through Hays and Blanco Counties;
- (17) Farm-to-Market Road 2978 between Farm-to-Market Road 1488 and the boundary line between Harris and Montgomery Counties;
- (18) U.S. Highway 90 between the western city limits of the city of San Antonio and the eastern city limits of the city of Hondo; or
- (19) the following highways in Austin County:
  - (A) State Highway 159;
  - (B) Farm-to-Market Road 331;
  - (C) Farm-to-Market Road 529;
  - (D) Farm-to-Market Road 1094; and
  - (E) Farm-to-Market Road 2502.

(b) This section does not affect the ability of a municipality to regulate a sign located on the portion of a roadway listed in Subsection (a) that is within the corporate limits or extraterritorial jurisdiction of the municipality in accordance with Chapter 216, Local Government Code.

(c) This section does not prohibit a person from erecting a commercial sign permitted by other law, rule, or regulation that is adjacent to and visible from a roadway not listed in this section and is visible from a roadway listed under this section if the intended purpose of the sign is to be visible only from the roadway not listed under this section.

Added by Acts 2001, 77th Leg., ch. 1264, Sec. 3, eff. Sept. 1, 2001.

Amended by:

Acts 2005, 79th Leg., Ch. 281 (H.B. 2702), Sec. 2.78, eff. June 14, 2005.

Acts 2005, 79th Leg., Ch. 352 (S.B. 1206), Sec. 1, eff. September 1, 2005.

Acts 2005, 79th Leg., Ch. 405 (S.B. 1579), Sec. 1, eff. September 1, 2005.

Acts 2005, 79th Leg., Ch. 796 (S.B. 369), Sec. 1, eff. September 1, 2005.

Acts 2005, 79th Leg., Ch. 903 (H.B. [34](#)), Sec. 1, eff. September 1, 2005.

Acts 2005, 79th Leg., Ch. 983 (H.B. [1851](#)), Sec. 1, eff. September 1, 2005.

Acts 2005, 79th Leg., Ch. 1046 (H.B. [1248](#)), Sec. 1, eff. September 1, 2005.

Acts 2005, 79th Leg., Ch. 1353 (S.B. [1204](#)), Sec. 1, eff. September 1, 2005.

Acts 2007, 80th Leg., R.S., Ch. 1020 (H.B. [1521](#)), Sec. 1, eff. September 1, 2007.

Acts 2017, 85th Leg., R.S., Ch. 964 (S.B. [2006](#)), Sec. 26, eff. June 15, 2017.

Acts 2017, 85th Leg., R.S., Ch. 964 (S.B. [2006](#)), Sec. 27, eff. June 15, 2017.