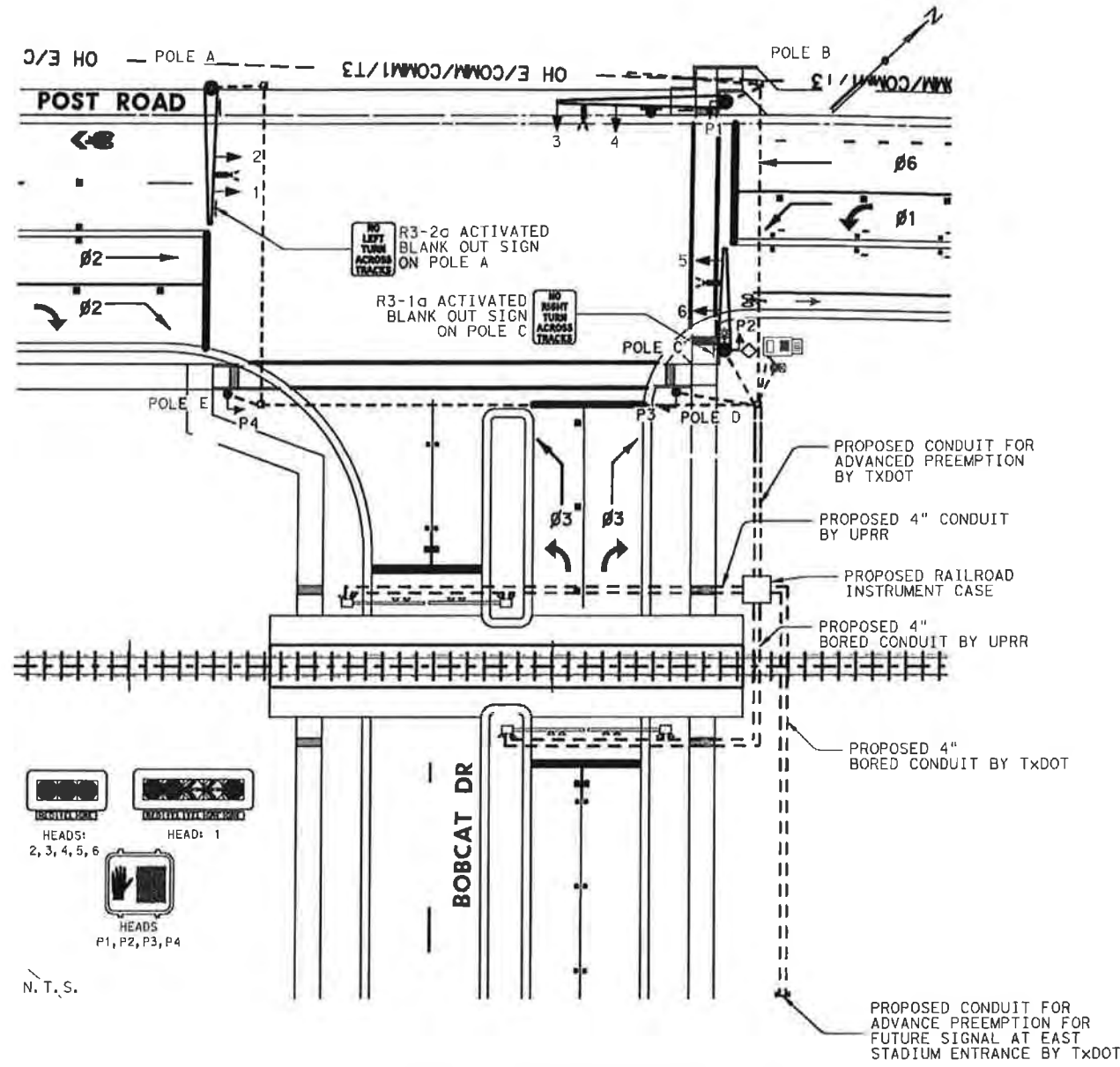
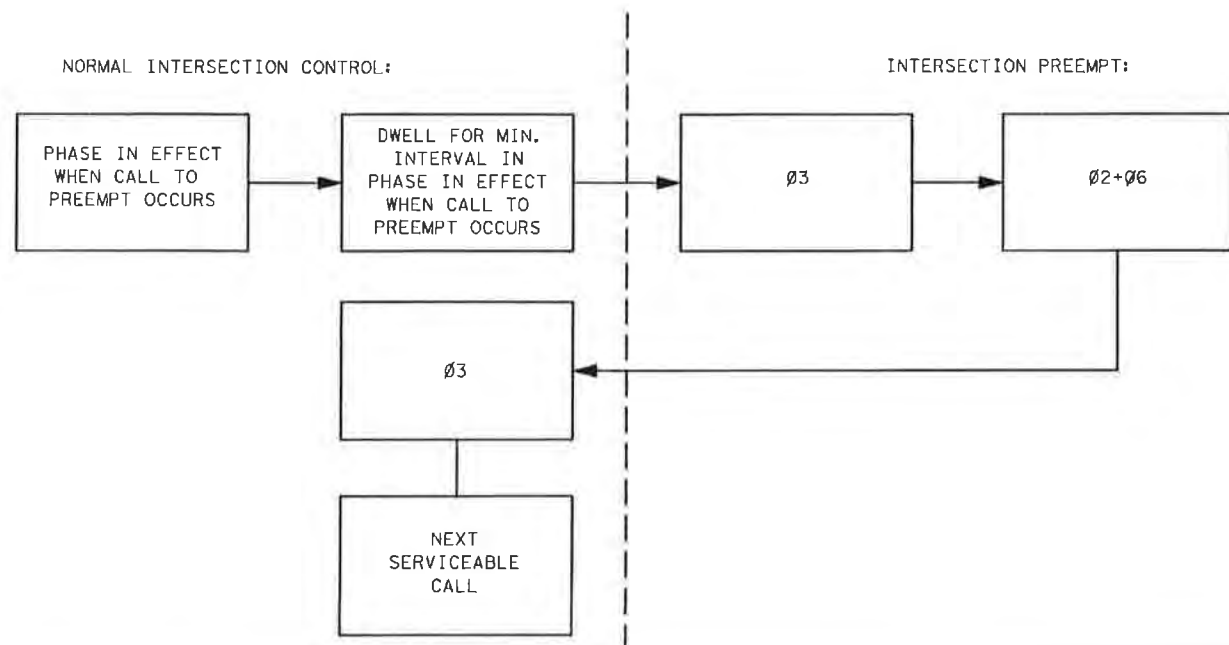


PHASE AND SIGNAL HEAD IDENTIFICATION



RAILROAD PREEMPTION SEQUENCE DIAGRAM



NOTES:

- UPON RECEIPT OF CALL TO PREEMPT, A MINIMUM GREEN INTERVAL SHALL BE TIMED (ADJUSTABLE FROM 0-255 SECS) TO PREVENT MOMENTARY GREEN SIGNAL DISPLAYS SHOULD A PREEMPT COMMAND BE RECEIVED IMMEDIATELY UPON ENTERING A PHASE GREEN.
- FOLLOWING THE MINIMUM GREEN INTERVAL, A YELLOW CLEARANCE (ADJUSTABLE FROM 0-255 SECS) SHALL BE PROVIDED TO CLEAR ALL INDICATIONS TO RED EXCEPT SIGNAL HEADS 3 AND 4 WHICH WOULD REMAIN GREEN IF THE INTERSECTION WAS IN PHASE 03 WHEN CALL PREEMPT WAS RECEIVED.
- HOLD 03 GREEN FOR AN ADJUSTABLE INTERVAL FROM 0-255 SECONDS IN ONE SECOND INTERVALS.
- CLEAR 03 TO 02+06 WITH A YELLOW CLEARANCE INTERVAL (ADJUSTABLE FROM 0-255 SECONDS).
- HOLD 02+06 GREEN FOR A MINIMUM TIME (ADJUSTABLE FROM 0-255 SECONDS) IN ONE SECOND INTERVALS.
- AFTER 02+06 MINIMUM GREEN TIME OUT AND CALL TO PREEMPT HAS BEEN DROPPED, CLEAR TO 03 WITH A YELLOW CLEARANCE INTERVAL (ADJUSTABLE FROM 0-255 SECONDS).
- A "PREEMPT TEST" INPUT SHALL BE PROVIDED TO CAUSE THE ENTIRE PREEMPT SEQUENCE TO OPERATE UPON ACTIVATION.

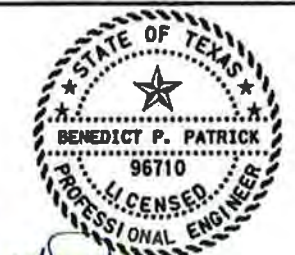
SIGNAL OPERATION CHART RAILROAD PREEMPT

SIGNAL HEAD #	MIN. VEH. GREEN	CLEARANCE	GREEN 03	03 CLEAR TO 02+06	02+06	02+06 CLEAR TO 03
	4 SECS	6 SECS (MIN)	90.2* SECS	6 SECS (MIN)	0-255 SECS	6 SECS (MIN)
1	-	-	R	R	G	Y
2	-	-	R	R	G	Y
3	-	-	G	Y	R	R
4	-	-	G	Y	R	R
5	-	-	R	R	G	Y
6	-	-	R	R	G	Y
P1	-	-	W	DW	DW	DW
P2	-	-	W	DW	DW	DW
P3	-	-	DW	DW	W	DW
P4	-	-	DW	DW	W	DW

* PROVIDED BY TXDOT

INTERNAL PREEMPTION TIMING

PARAMETER	TIME (SEC'S)
MINIMUM VEHICLE GREEN	4
CLEARANCE	4 YELLOW 2 RED
03 GREEN	90.2
03 CLEAR TO 02 + 06	4 YELLOW 2 RED
02 + 06 MINIMUM GREEN	0-255
02 + 06 CLEAR TO 03	4 YELLOW 2 RED



Benedict P. Patrick 4/11/14

HDR HDR Engineering, Inc.
4401 West Gate Blvd, Suite 400
Austin, Texas 78745
(Texas Registered Engineering Firm No. F-754)



**LOOP 82 UPRR OVERPASS
EXHIBIT A
UPRR MP 208.50
AUSTIN SUBDIVISION
DOT # 447 677C & 448 422J
RAILROAD PREEMPTION**

SHEET 9 OF 14

DESIGN	FED. RD. DIV. NO.	FEDERAL AID PROJECT NO.		HIGHWAY NO.
BP	6	STP ()	RGS	LP 82
GRAPHICS		STATE	DISTRICT	COUNTY
RT		TEXAS	AUS	HAYS
CHECK		CONTROL	SECTION	JOB
LS		0016	09	033
CHECK				566
RT				

PLOT DRIVER: TXDOT_PDF_LW.plt
 USER: drujba
 FILE: c:\pwworking\hdr\2014\0244678\UP82-SGNL-101.dgn
 PENTABLE: 00000000163908.tbl
 TIME: 11:21:02 AM
 SCALE: 1:40
 DATE: 4/11/2014