

FED. ROAD DIST. NO.	STATE	FEDERAL AID PROJECT NO.	ROUTE NO.
6	TEXAS	1-35W 5(27)-429	1
STATE DIST. NO.	COUNTY	STATE CONTROL NO.	ROUTE NO.
2	TARRANT	14-16-61	IH35W

STATE OF TEXAS STATE HIGHWAY DEPARTMENT

PLAN OF PROPOSED RIGHT OF WAY PROJECT

FINAL MAP
PROJECT DESIGNATOR 7090

INTERSTATE HIGHWAY 35W
TARRANT COUNTY
ACCOUNT NO. 9002-6-6
PROJECT NO. 1-35W 5(27)-429

FROM: N. of St. Louis & S.W. R.R. North

TO: LOOP 217

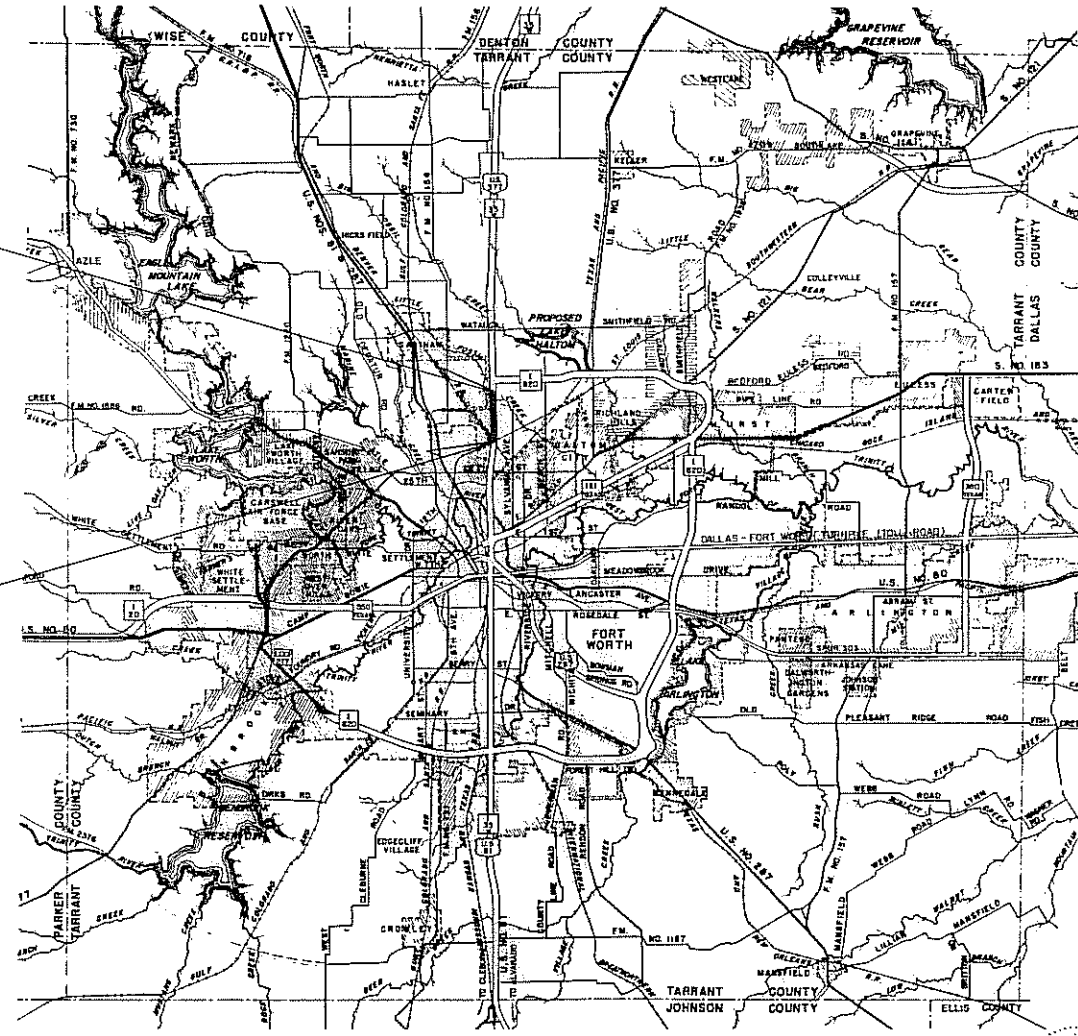
PLAN SCALE: AS SHOWN

NET LENGTH OF PROJECT = 6,658.64 FT. = 1.261 MI.

END PROJECT NO. 1-35W-5(27)-429
END ACCOUNT NO. 9002-6-6
STA 390+69.92

BEGIN PROJECT NO. 1-35W-5(27)-429
BEGIN ACCOUNT NO. 9002-6-6
STA 457+32.94

END PROJECT NO. 1-35W-5(23)-428
END ACCOUNT NO. 9002-6-4
STA. 457+32.94



- CONVENTIONAL SIGNS
- RIGHT OF WAY LINE
 - PROPERTY LINE
 - COUNTY LINE
 - CONTROL OF ACCESS LINE
 - SURVEY LINE
 - FENCE
 - POWER LINE
 - TELEPHONE OR TELEGRAPH
 - RAILROAD
 - BRIDGE OR CULVERT
 - CITY LIMITS

EQUATION: STA. 435+30.08 BACK = STA. 435+34.46 FWD.
NO EXCEPTIONS

LAYOUT SCALE: 1 IN. = 3 MILES

CORRECT: Feb 13 1968

B. P. Stewart
DISTRICT R.O.W. ENGINEER

APPROVED: B-14 1968

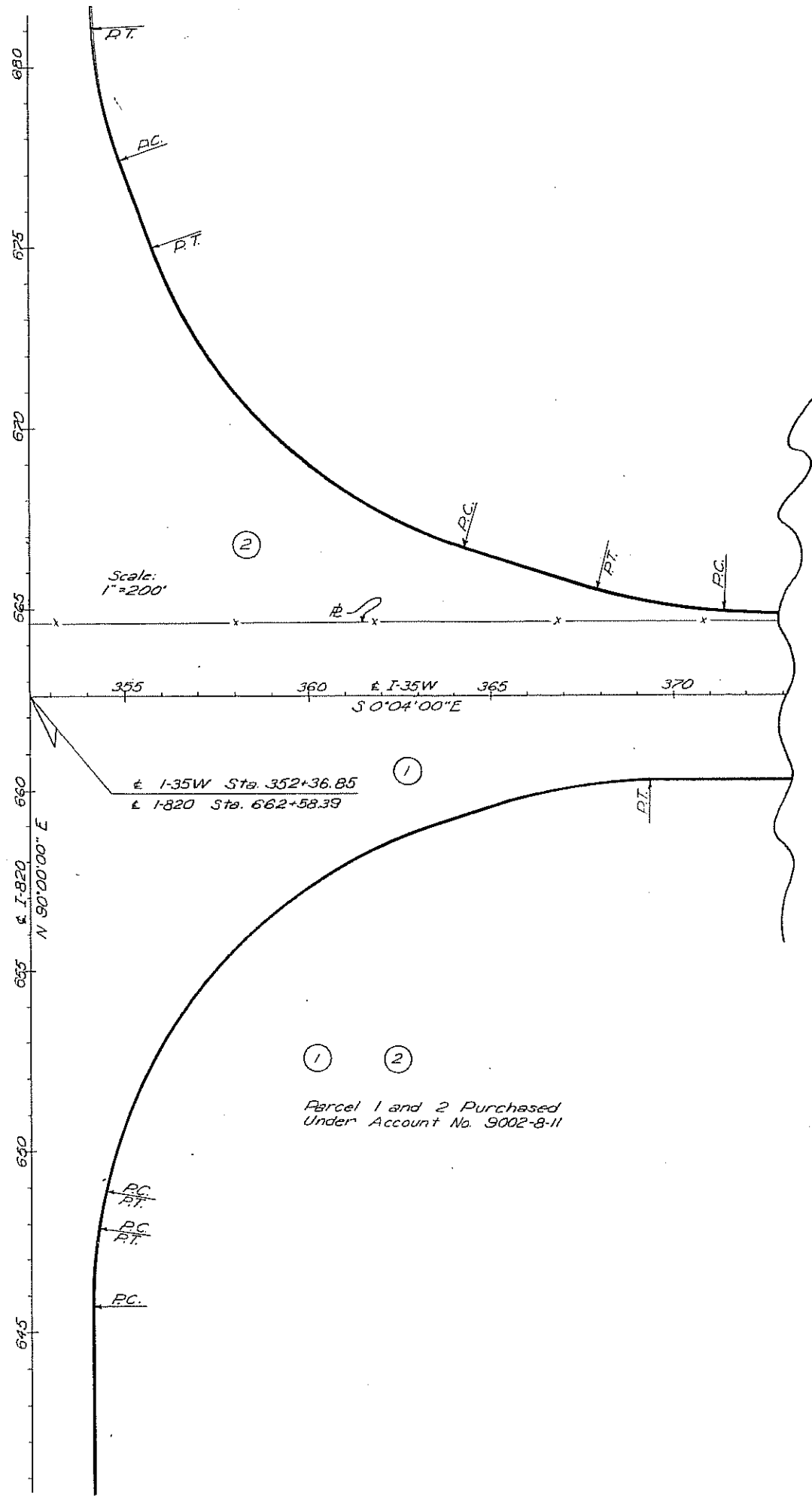
R. W. Crook
DISTRICT ENGINEER



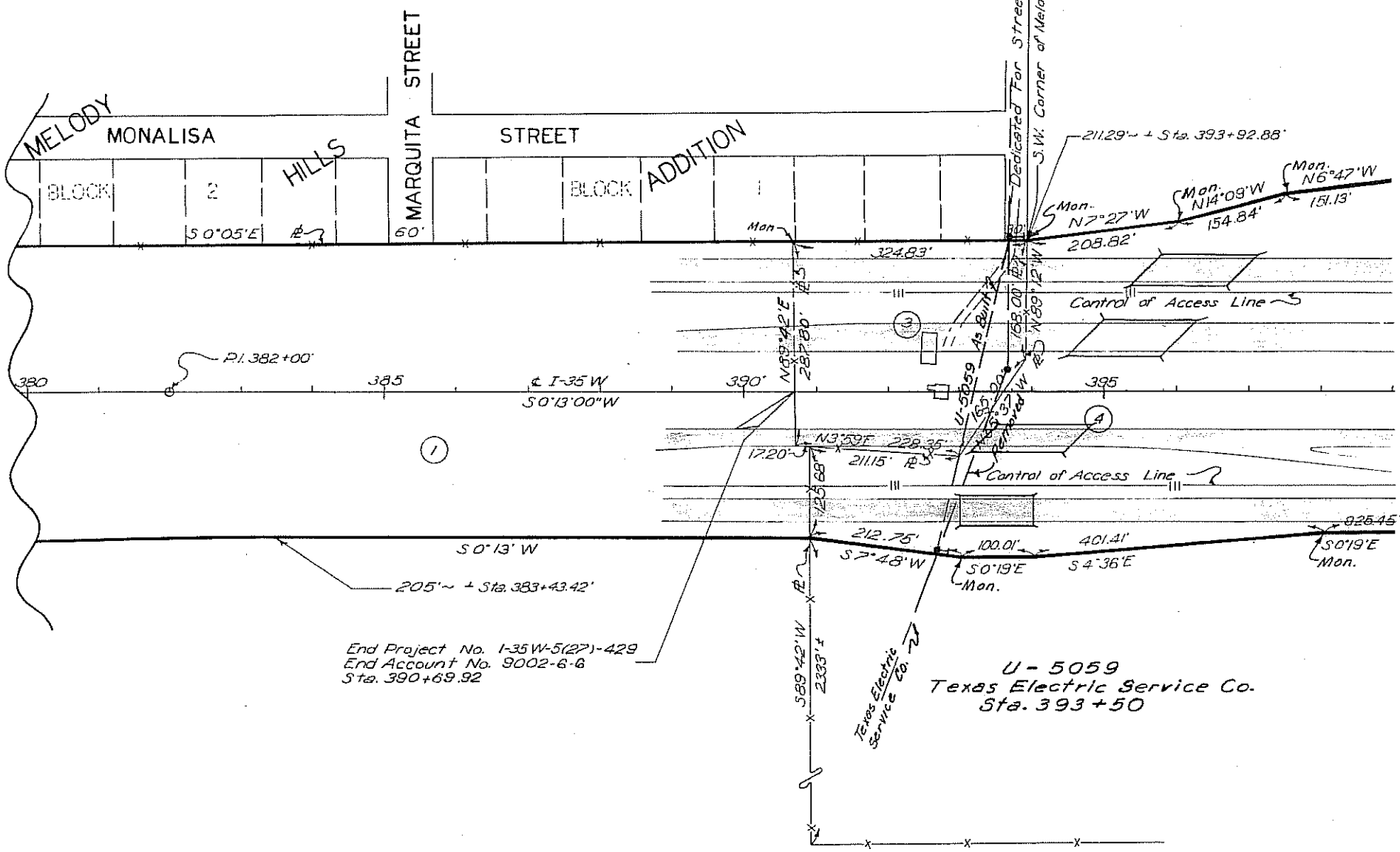
DEPARTMENT OF COMMERCE
BUREAU OF PUBLIC ROADS

APPROVED: _____
DIVISION ENGINEER

DATE: _____

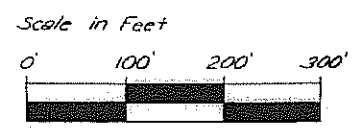


Parcel 1 and 2 Purchased Under Account No. 9002-8-11



End Project No. I-35W-5(27)-429
End Account No. 9002-6-6
Sta. 390+69.92

Joe A. Steger et al
Judgement
Vol. 3991 Page 527
Sta 390+69.62 to Sta. 393+92.88
2.062 Ac.
Remainder: Left Side-None
Right Side-None



FED. DIV. NO.	STATE	FEDERAL PROJECT NO.	SHEET NO.
6	TEXAS	I-35W-5(27)429	2
STATE DIST. NO.	COUNTY	CONT. SECT. JOB	HIGHWAY NO.
2	Tarrant	14 16 61	I-35W

R.W. 9002-6-6

ALLEN BEARD SURVEY

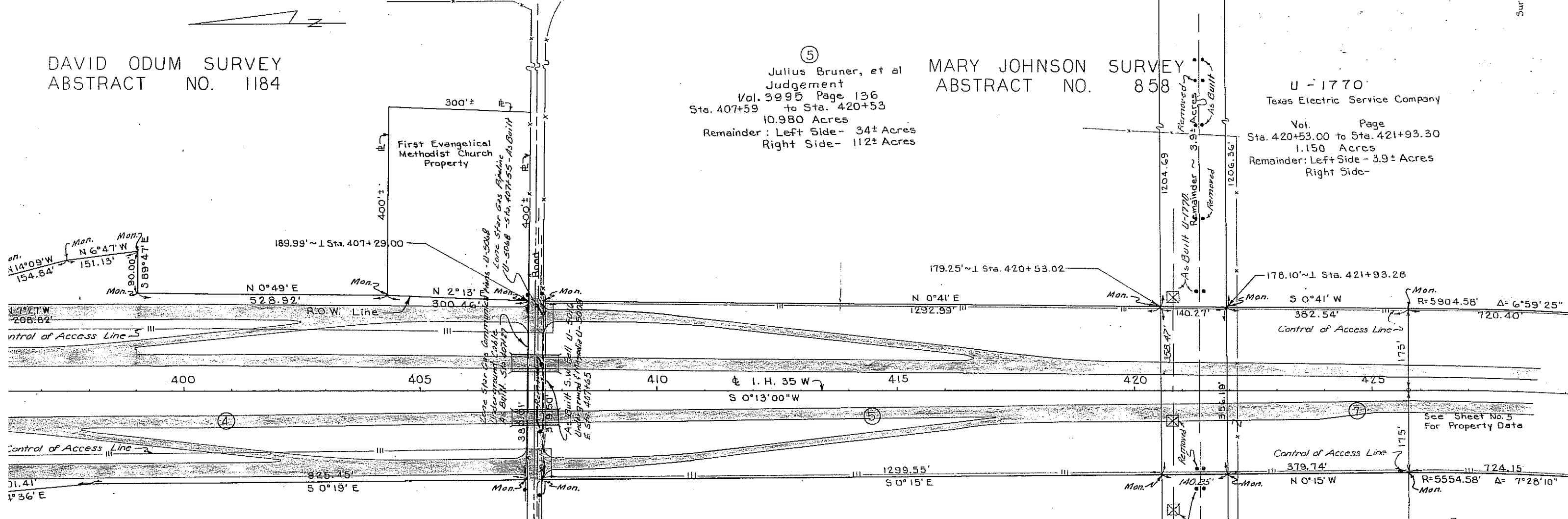
ABSTRACT NO. 137

DAVID ODUM SURVEY
ABSTRACT NO. 1184

⑤
Julius Bruner, et al
Judgement
Vol. 3995 Page 136
Sta. 407+59 to Sta. 420+53
10.980 Acres
Remainder: Left Side- 34± Acres
Right Side- 112± Acres

MARY JOHNSON SURVEY
ABSTRACT NO. 858

U-1770
Texas Electric Service Company
Vol. Page
Sta. 420+53.00 to Sta. 421+93.30
1.150 Acres
Remainder: Left Side- 3.9± Acres
Right Side-

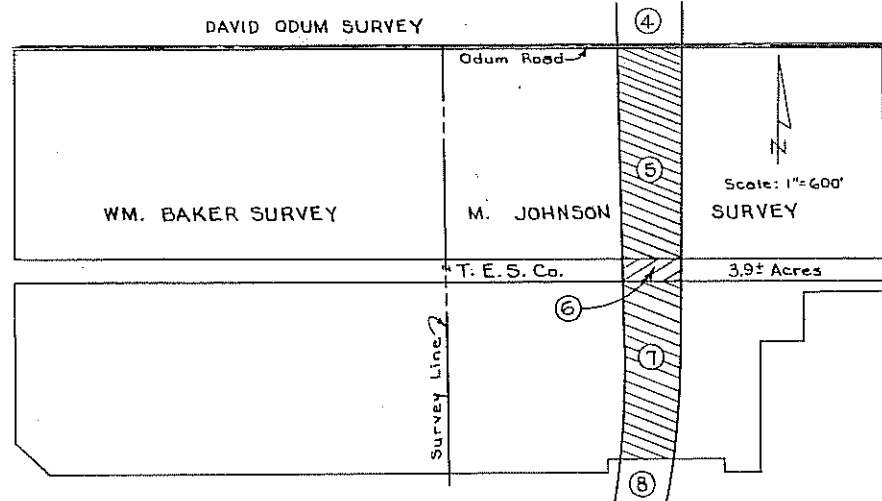
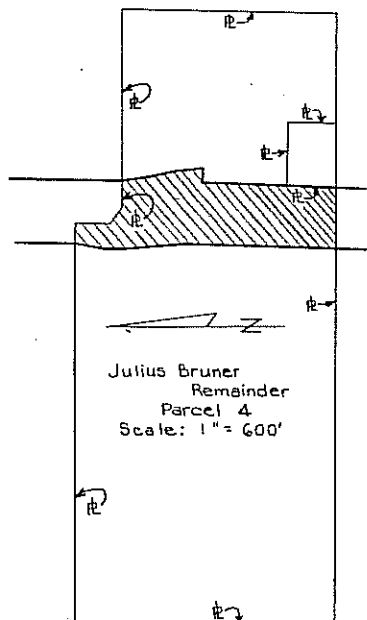


U-5008
Magnolia Pipeline Co.
Sta. 407+27

U-5016
SW Bell Telephone Co.
Sta. 407+52

U-5068
Lone Star Gas Co.
Sta. 407+27

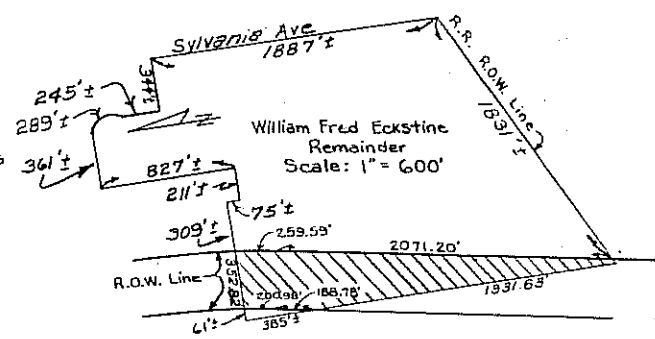
④
Julius Bruner, et al
Judgement
Vol. 3995 Page 136
Sta. 393+60.00 to Sta. 407+29.00
13.997 Acres
Remainder: Left Side- 29± Acres
Right Side- 87± Acres



MARY JOHNSON SURVEY
 ABSTRACT NO. 858

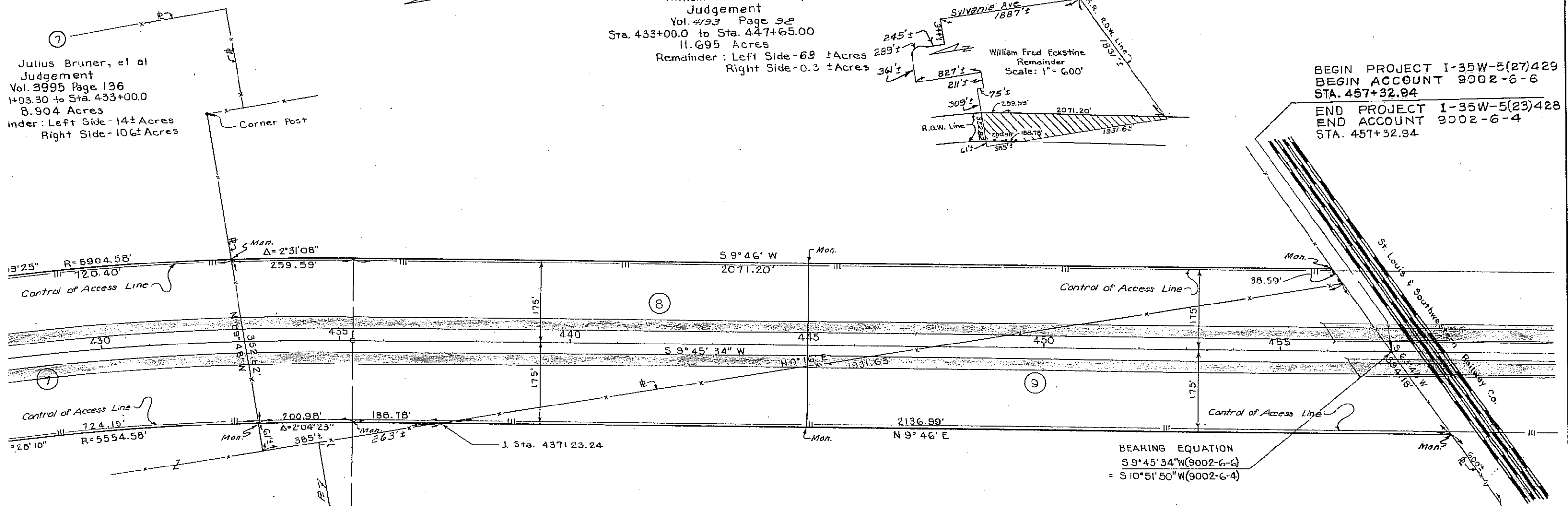
⑧

William Fred Eckstine, et ux
 Judgement
 Vol. 4193 Page 92
 Sta. 433+00.0 to Sta. 447+65.00
 11.695 Acres
 Remainder: Left Side-69 ± Acres
 Right Side-0.3 ± Acres

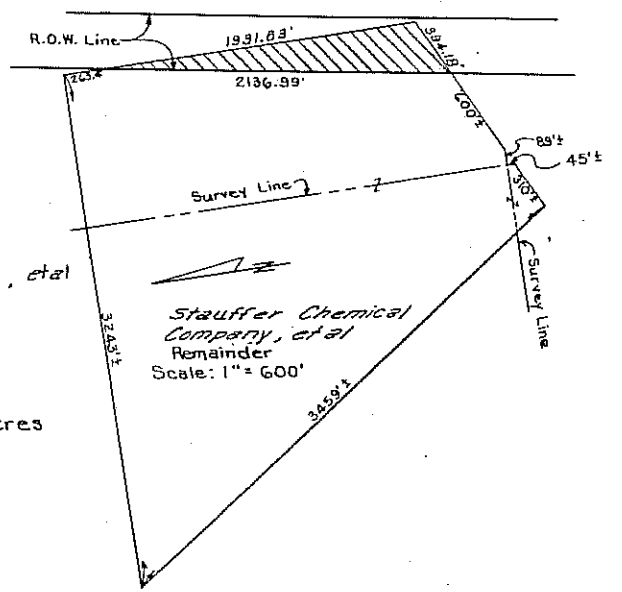


BEGIN PROJECT I-35W-5(27)429
 BEGIN ACCOUNT 9002-6-6
 STA. 457+32.94
 END PROJECT I-35W-5(23)428
 END ACCOUNT 9002-6-4
 STA. 457+32.94

⑦
 Julius Bruner, et al
 Judgement
 Vol. 3995 Page 136
 1+93.30 to Sta. 433+00.0
 8.904 Acres
 Under: Left Side-14± Acres
 Right Side-10± Acres



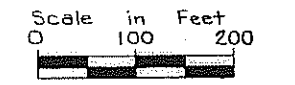
BEARING EQUATION
 S 9° 45' 34" W (9002-6-6)
 = S 10° 51' 50" W (9002-6-4)



⑨
 Stauffer Chemical Company, et al
 Judg.
 Vol. 4116 Page 132
 Sta. 447+65.00 to Sta. 457+32.94
 7.820 Acres
 Remainder: Left Side - None
 Right Side - 129 ± Acres

Curve Data
 P.I. 430+54.05
 $\Delta = 9^\circ 32' 34''$
 $D = 1^\circ 00'$
 $R = 5729.58'$
 $T = 478.245'$
 $L = 954.278'$

EQUATION
 P.T. Sta. 435+30.08 BK.
 = Sta. 435+34.46 FWD.



FED. RD. DIST. NO.	STATE	FEDERAL PROJECT NO.	SHEET NO.
2	TEXAS	I-35W-5 (27)	7
	COUNTY	CONT. SECT. JOB	HIGHWAY NO.
	TARRANT	14 16 61	I-35W