

FED. ROAD DIST. NO.	STATE	FEDERAL AID PROJECT NO.	SHEET NO.
6	TEXAS	1-820-4(15)447	1
STATE DIST. NO.	COUNTY	STATE CONTRACT NO.	SUMMARY SHEET NO.
2	TARRANT	8-13-33	1-820

FINAL STATE OF TEXAS STATE HIGHWAY DEPARTMENT

PLAN OF PROPOSED RIGHT OF WAY PROJECT

INTERSTATE LOOP 820

TARRANT COUNTY

ACCOUNT NO. 9002-8-7

PROJECT NO. 1-820-4(15)447

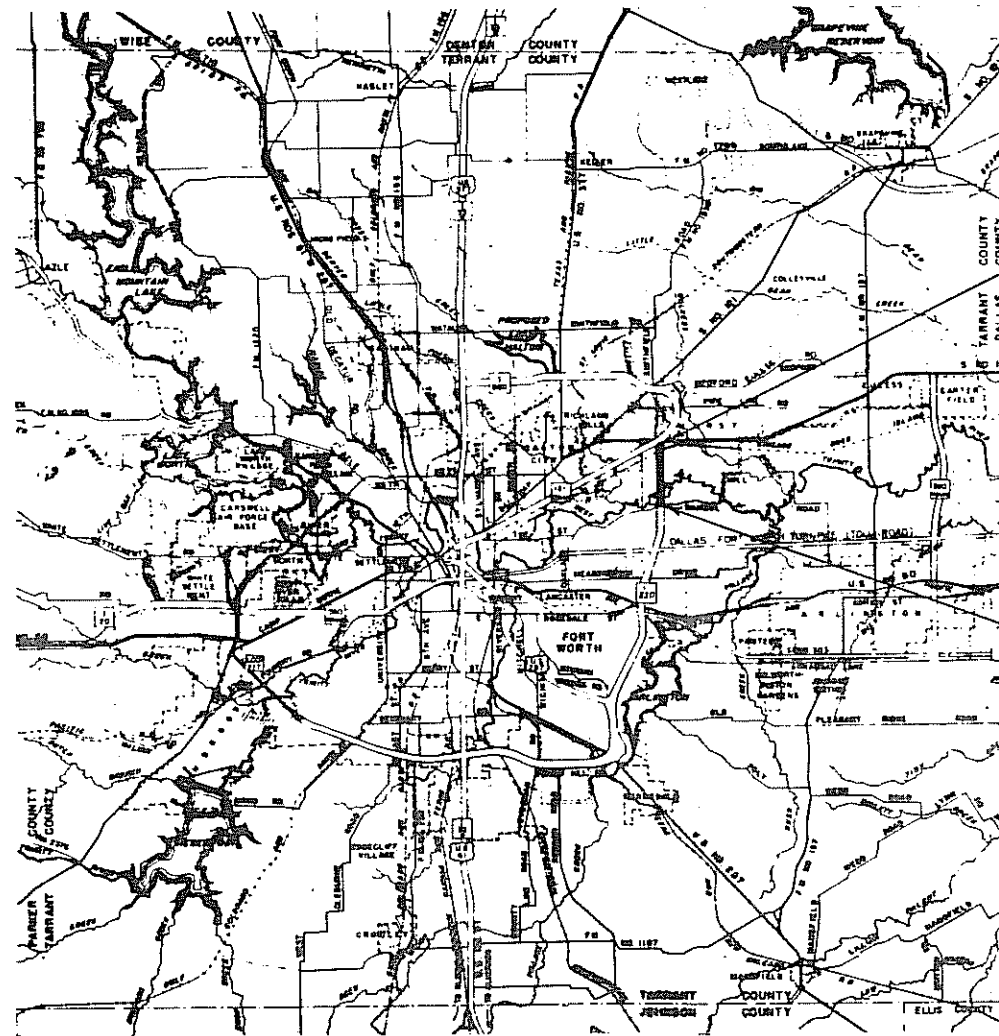
FROM: NORTH OF RANDOL MILL ROAD, NORTH

TO: PRESENT STATE HIGHWAY 183

PLAN SCALE AS SHOWN

NET LENGTH OF PROJECT = 10,855.62 FT. = 2.056 MI.

PROJECT DESIGNATOR 7150



END PROJECT 1 820-4(15)447
END ACCOUNT 9002-8-7
STA. 798+23.02

STA. 798+23.02
BEGIN PROJECT 1 820-4(21)449
BEGIN ACCOUNT 9002-8-8

BEGIN PROJECT 1 820-4(15)447
BEGIN ACCOUNT 9002-8-7
STA. 689+67.40

STA. 689+67.40
END PROJECT 1 820-4(50)445
END ACCOUNT 9002-8-6

- CONVENTIONAL SIGNS
- RIGHT OF WAY LINE
 - PROPERTY LINE
 - COUNTY LINE
 - CONTROL OF ACCESS LINE
 - SURVEY LINE
 - FENCE
 - POWER LINE
 - TELEPHONE OR TELEGRAPH
 - RAILROAD
 - BRIDGE OR CULVERT
 - CITY LIMITS

NO EQUATIONS
NO EXCEPTIONS
LAYOUT SCALE: 1 IN. = 3 MILES
0 3M. 6M. 9M.

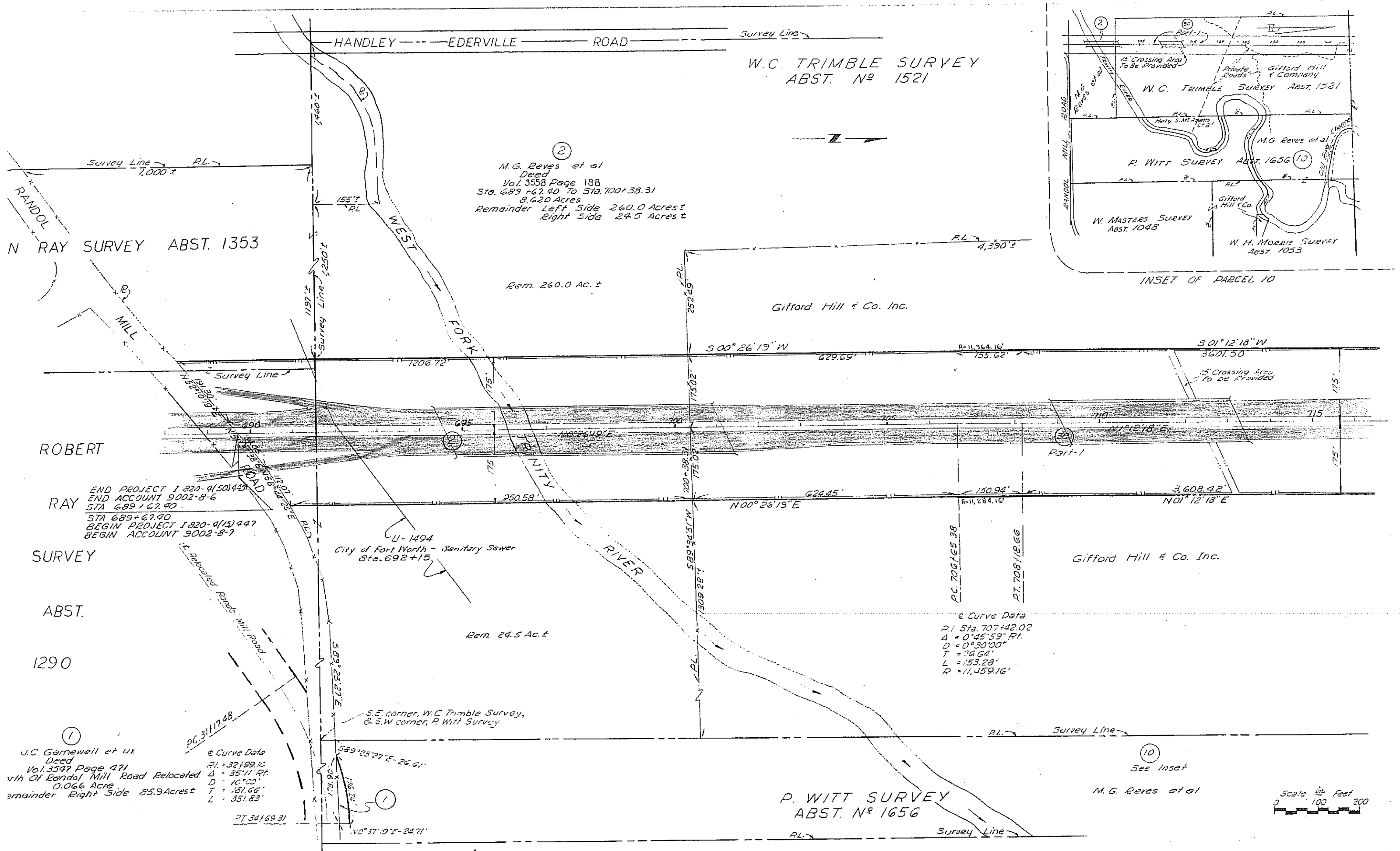
CORRECT Feb 7 1968

B. R. Stewart
DISTRICT R.O.W. ENGINEER

APPROVED February 8 1968

R. W. Brook
DISTRICT ENGINEER

DEPARTMENT OF COMMERCE BUREAU OF PUBLIC ROADS	
APPROVED: _____	DATE _____
DIVISION ENGINEER	DATE



W.C. TRIMBLE SURVEY
ABST. N° 1521

(2)
M.G. Reves et al
Deed
Vol. 3558 Page 188
Sta. 689+67.40 To Sta. 700+38.31
8.620 Acres
Remainder Left Side 260.0 Acres ±
Right Side 24.5 Acres ±

Rem. 260.0 Ac. ±

Gifford Hill & Co. Inc.

ROBERT

RAY
END PROJECT 1820-4(15)447
END ACCOUNT 9002-8-6
STA 689+67.40
BEGIN PROJECT 1820-4(15)447
BEGIN ACCOUNT 9002-8-7

SURVEY

ABST.

1290

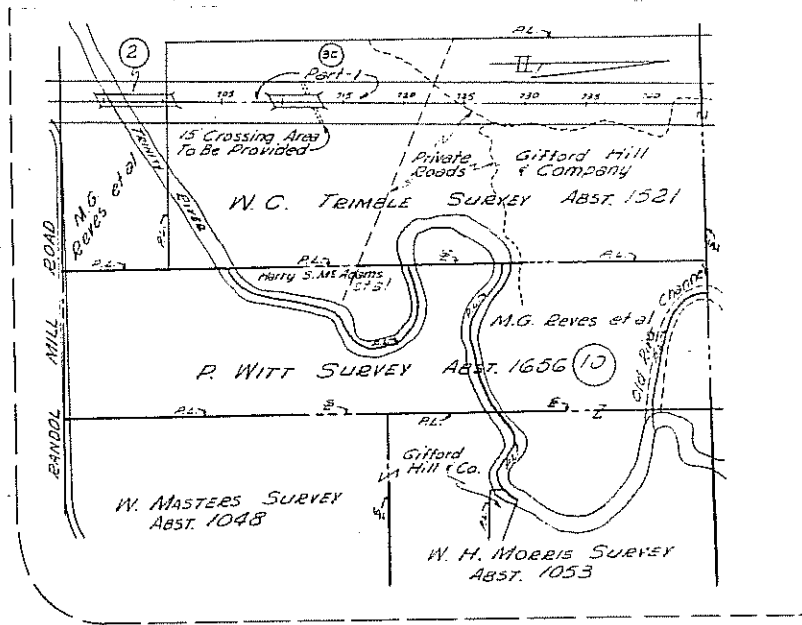
U-1494
City of Fort Worth - Sanitary Sewer
Sta. 692+15

Rem. 24.5 Ac. ±

Gifford Hill & Co. Inc.

P. WITT SURVEY
ABST. N° 1656

M.G. Reves et al



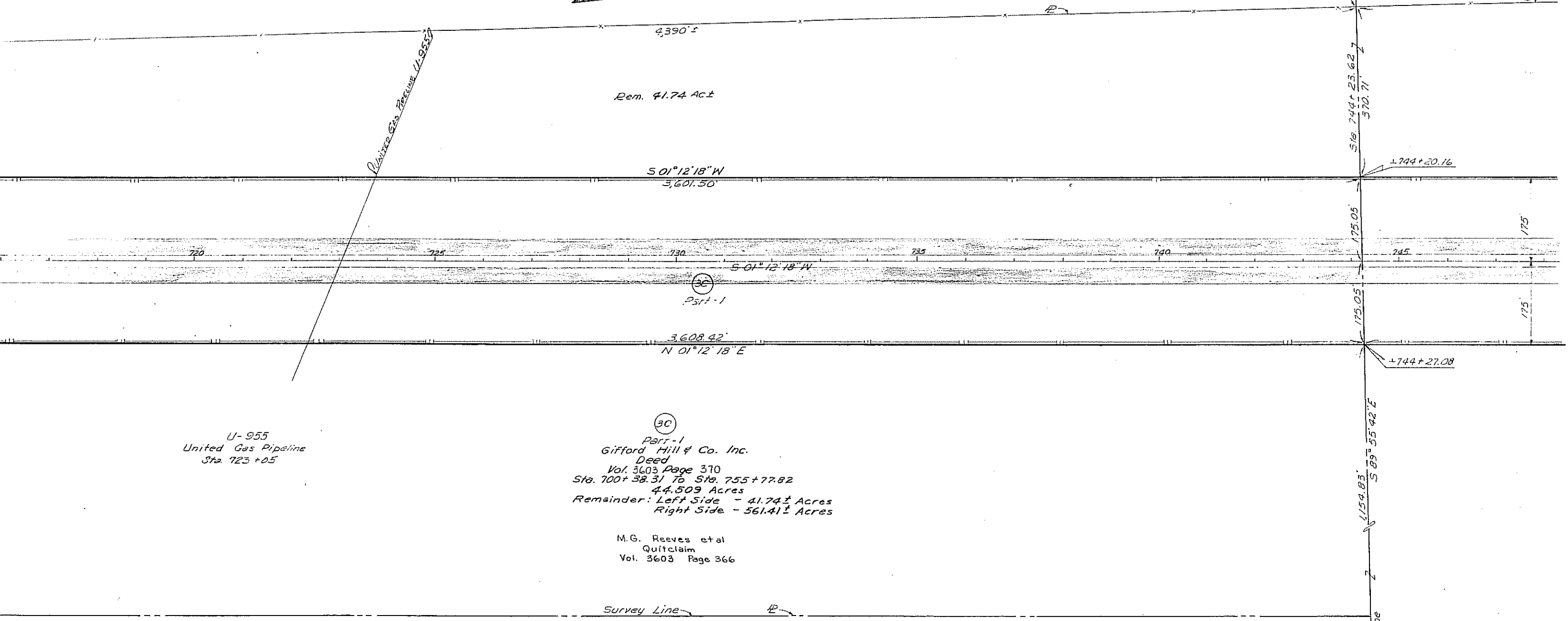
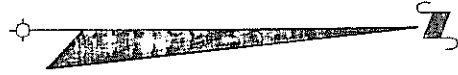
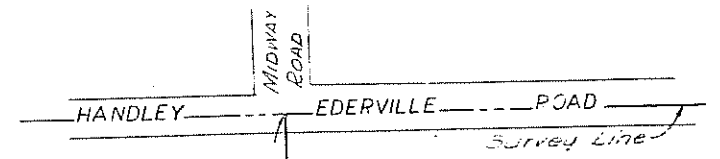
INSET OF PARCEL 10

Curve Data
P.I. Sta. 707+42.02
Δ = 0°45'59" Rt.
D = 0°30'00"
T = 76.64'
L = 53.28'
R = 11,459.16'

Curve Data
P.I. = 32+99.12
Δ = 35°11' Rt.
D = 10°00"
T = 181.66'
L = 351.83'

(1)
J.C. Garnwell et ux
Deed
Vol. 3547 Page 471
with Of Randol Mill Road Relocated
0.066 Acre
Remainder Right Side 85.9 Acres ±

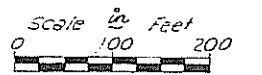
Scale in Feet
0 100 200



U-955
United Gas Pipeline
Sta. 723+05

(30)
Part - 1
Gifford Hill & Co. Inc.
Deed
Vol. 3603 Page 370
Sta. 700+38.31 To Sta. 755+77.82
44.509 Acres
Remainder: Left Side - 41.74± Acres
Right Side - 561.41± Acres

M.G. Reeves et al
Quitclaim
Vol. 3603 Page 366

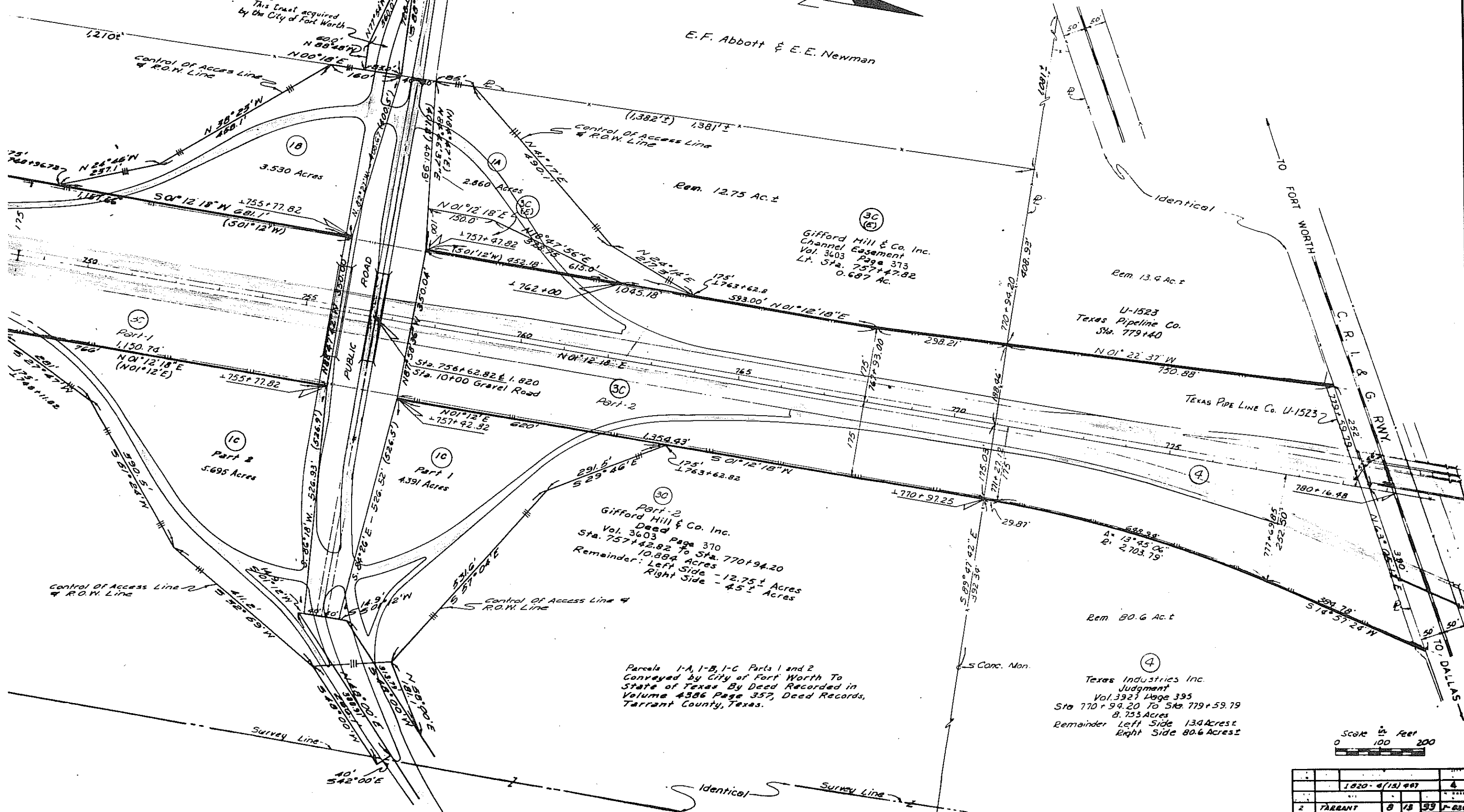


BENNETT SURVEY ABST. 138



NOTE
This Easement acquired
by the City of Fort Worth

E. F. Abbott & E. E. Newman



18
3.530 Acres

1A
2.860 Acres

3C
Gifford Hill & Co. Inc.
Channel Easement
Vol. 3603 Page 373
Lt. Sta. 757+47.82
0.687 Ac.

Rem. 13.4 Ac. ±
U-1523
Texas Pipeline Co.
Sta. 779+40

3C
Part-1
1,150.75'
N 01° 12' 18" E
(N 01° 12' E)

1C
Part 2
5.695 Acres

1C
Part 1
4.391 Acres

3C
Part-2
Gifford Hill & Co. Inc.
Deed
Vol. 3603 Page 370
Sta. 757+42.82 to Sta. 770+94.20
10.884 Acres
Remainder: Left Side - 12.75 ± Acres
Right Side - 45 ± Acres

4
Texas Industries Inc.
Judgment
Vol. 3927 Page 395
Sta. 770+94.20 To Sta. 779+59.79
8.733 Acres
Remainder Left Side 13.4 Acres
Right Side 80.6 Acres ±

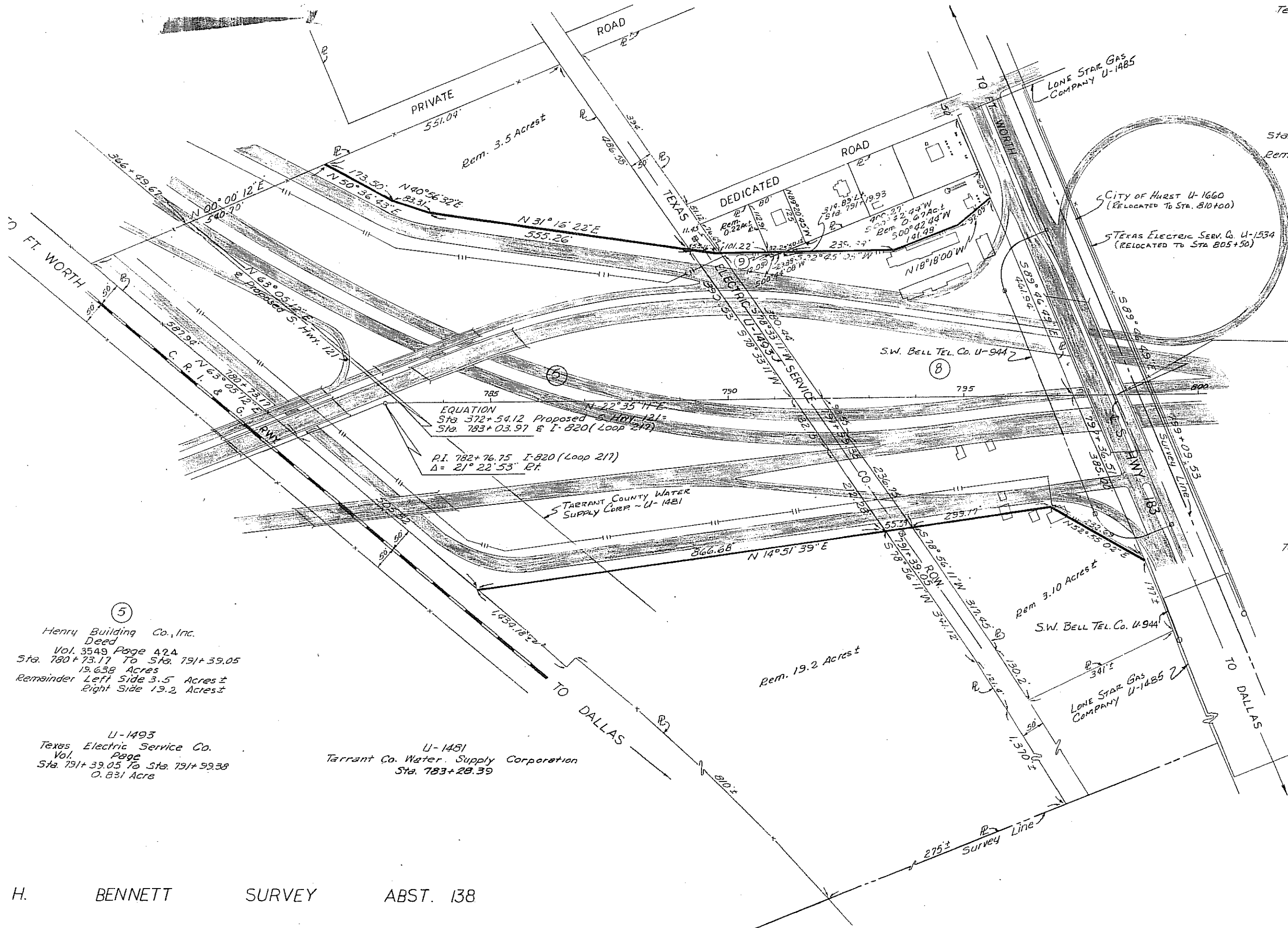
Parcels 1-A, 1-B, 1-C Parts 1 and 2
Conveyed by City of Fort Worth To
State of Texas By Deed Recorded in
Volume 4386 Page 357, Deed Records,
Tarrant County, Texas.

Scale in Feet
0 100 200

1820-4(13)497	4
TARRANT	8 18 39 1-689

7-26-67

R.O.W. 9002-B-7



⑧
A. M. Payton
Deed
Vol. 3551 Page 398
Sta. 791+39.38 To Sta. 797+36.51
7.572 Acres
Remainder Left Side 0.0± Acres
Right Side 5.0± Acres

⑨
A. M. Payton
Deed
Vol. 3551 Page 398
Left Of Sta. 791+19.93
0.004 Acre
Remainder Left Side 0.0± Acre
Right Side 0.0 Acre

END PROJECT I-820-4(15) 447
END ACCOUNT 9002-8-7
STA. 798+23.02
STA. 798+23.02
BEGIN PROJECT I-820-4(21) 449
BEGIN ACCOUNT 9002-8-8

U-944
S.W. Bell Telephone Co.
U-1485
Lone Star Gas Co
U-1534
Texas Electric Service Co
U-1660
City of Hurst

⑤
Henry Building Co., Inc.
Deed
Vol. 3549 Page 424
Sta. 780+73.17 To Sta. 791+39.05
19.638 Acres
Remainder Left Side 3.5 Acres±
Right Side 19.2 Acres±

U-1493
Texas Electric Service Co.
Vol. Page
Sta. 791+39.05 To Sta. 791+39.38
0.831 Acre

U-1481
Tarrant Co. Water Supply Corporation
Sta. 783+28.39

