

TEXAS TRANSPORTATION COMMISSION

EL PASO County

MINUTE ORDER

Page 1 of 1

EL PASO District

In the City of El Paso, EL PASO COUNTY, on FARM TO MARKET ROAD 258, the state of Texas used certain land for highway purposes to which there is no record title.

Pursuant to Texas Transportation Code, §§201.103 and 221.001, the executive director has recommended, as shown in Exhibit A, that a segment of FM 258 be removed from the state highway system along Old Pueblo Road from SH 20 south to Socorro Road, a distance of 0.16 mile, and that jurisdiction, control, and maintenance be transferred to the City of El Paso (city). The executive director has also recommended that FM 258 be designated along Socorro Road from Old Pueblo Road west to Zaragoza Road and north to SH 20, a distance of 0.29 mile.

A portion of the land (Tract 1), described in Exhibit B, is no longer needed for a state highway purpose.

In accordance with Texas Transportation Code, Chapter 202, Subchapter B, the Texas Transportation Commission (commission) may recommend the quitclaim of any interest that might have accrued to the state by use of the property to the municipality where the property is located.

The city has agreed to assume jurisdiction, control, and maintenance and has requested that Tract 1 be quitclaimed to the city.

IT IS THEREFORE ORDERED by the commission that: 1) a segment of FM 258 is removed from the state highway system along Old Pueblo Road from SH 20 south to Socorro Road, a distance of 0.16 mile, and jurisdiction, control, and maintenance are transferred to the city; and 2) FM 258 is designated on a new location along Socorro Road from Old Pueblo Road west to Zaragoza Road and north to SH 20, a distance of 0.29 mile.

FURTHER, IT IS ORDERED by the commission that Tract 1 is no longer needed for a state highway purpose. The commission recommends, subject to approval by the attorney general, that the governor of Texas execute a proper instrument quitclaiming the state's right and interest in Tract 1 to the City of El Paso, Texas.

Submitted and reviewed by:

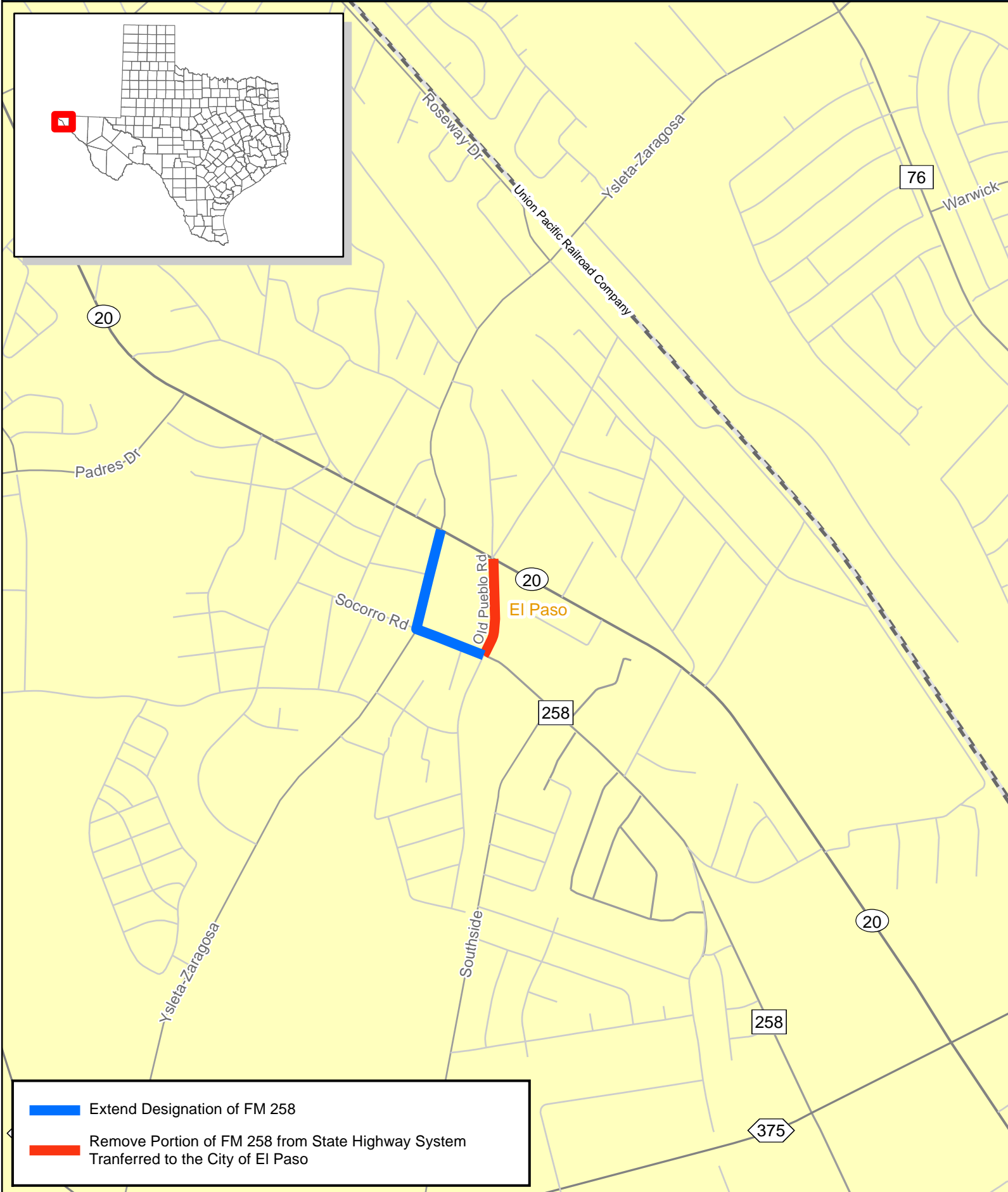
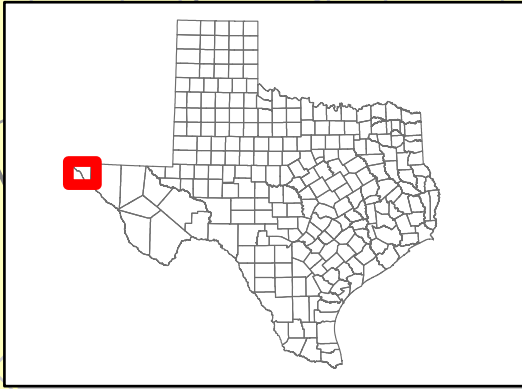
Director, Right of Way Division

Recommended by:

Executive Director

114659 July 28 '16

Minute Date
Number Passed



- Extend Designation of FM 258
- Remove Portion of FM 258 from State Highway System Transferred to the City of El Paso



EXHIBIT B to Minute Order

County: El Paso
Highway Portion of Old Pueblo Road
CSJ
Limits From Alameda Ave. (SH 20) to
Socorro (FM 258)

Exhibit A

Being a portion of Old Pueblo Road
Out of Blocks 44 and 48, Ysleta Grant,

Parcel #
Page 1 of 2
March 17, 2016

METES AND BOUNDS DESCRIPTION

Description of a parcel of land being a portion of Old Pueblo Road out of Blocks 44 and 48, Ysleta Grant, City of El Paso, El Paso County, Texas, and said parcel being 0.818 Acres (35,623 Square Feet) more particularly described by metes and bounds as follows:

Commencing for reference at an existing brass disk monument on the monument line of Alameda Ave. (SH 20) and Old Pueblo Road having surface coordinates of 10,629,049.04 North and 433,424.94 East in the Texas State Plane Coordinate System Central Zone NAD 83) from which an existing bolt at the monument line of Alameda Ave. (SH 20) and Harris Street bears North $61^{\circ}14'39''$ West (S $64^{\circ}21'00''$ W, Ysleta Grant Block 48) a distance of 964.34 feet, Thence South $35^{\circ}00'51''$ West a distance of 30.41 feet to a set chiseled x in concrete on the intersection of the southerly right of way of Alameda Ave with the westerly right of way line of Old Pueblo Road for the **"TRUE POINT OF BEGINNING"** and having surface coordinates of 10,629,025.12 North and 433,406.17 East; and 30 feet left of centerline of Alameda Ave. (SH 20)

- 1.) Thence leaving said line, South $61^{\circ}14'39''$ East (S $64^{\circ}21'00''$ E, Ysleta Grant Block 48) a distance of 52.93 feet to a set chiseled x in concrete on the intersection of the southerly right of way line of Alameda Ave. (SH 20) with the easterly right of way line of Old Pueblo Road;
- 2.) Thence with the easterly right of way line of Old Pueblo Road, South $03^{\circ}00'39''$ East (S $06^{\circ}07'00''$ East, Ysleta Grant, Block 48) a distance of 192.80 feet to a found x chiseled in concrete for the southwesterly corner of Tract 10C1, Block 48, Ysleta Grant;
- 3.) Thence, North $77^{\circ}22'39''$ West (N $80^{\circ}29'00''$ West, Ysleta Grant, Block 48) a distance of 5.20 feet to a point for the northwesterly corner of Tract 11A, Block 48, Ysleta Grant, said point also being on the easterly right of way line of Old Pueblo Road;
- 4.) Thence with the easterly right of way line of Old Pueblo Road, South $03^{\circ}00'39''$ East (S $06^{\circ}07'00''$ East, Ysleta Grant, Block 48) a distance of 254.10 feet to a found chiseled V in concrete;
- 5.) Thence with said right of way line, South $02^{\circ}15'21''$ West (S $00^{\circ}51'00''$ E, Ysleta Grant, Block 48) a distance of 185.94 feet to a set concrete nail on the realignment of Old Pueblo Road as described in Parcel 1 in Easement to City of El Paso in volume 1139, page 1339, Real property records of El Paso County, Texas;
- 6.) Thence with said line, South $24^{\circ}55'21''$ West (S $21^{\circ}49'00''$ W, Volume 1139, page 1339) a distance of 145.45 feet to a set chiseled x in concrete for a point of curve;
- 7.) Thence 43.95 feet along the arc of a curve to the left which has a radius of 26.90 a interior angle of $93^{\circ}37'26''$ a chord which bears South $21^{\circ}53'15''$ East (S $24^{\circ}59'30''$ East, volume 1139, Page 1339) a distance of 39.22 feet to a set chiseled x on concrete on the northerly right of way line of Socorro Road (FM 258);

EXHIBIT B to Minute Order

Parcel#
Page 2 of 2


- 8.) Thence along said right of way line, North 68°42'17" West (N71°48'00"W, volume 1139, page 1339) a distance of 106.93 feet to a set ½" rebar with cap marked TX 5152;
- 9.) Thence 45.23 feet along the arc of a curve to the left which has a radius of 30.00 feet a interior angle of 86°23'00" a chord which bears North 68°06'51" East (N 65°00'30" E, volume 1139, page 1339) a distance of 41.07 feet to a set ½" rebar with cap marked TX 5152 on the westerly line of the realignment of Old Pueblo as described in Parcel 1in Easement to City of El Paso in volume 1139, page 1339, Real property records of El Paso County, Texas;
- 10.) Thence along said Line, North 24°55'21" East (N 21°49'00" E, volume 1139, page 1339) a distance of 165.04 feet to a set ½" rebar with cap marked TX 5152 on the westerly right of way line of Old Pueblo Road;
- 11.) Thence along said right of way line, North 02°15'21" East (N 00°51'00" W, Ysleta Grant Block 44) a distance of 150.36 feet to a set chiseled x on concrete;

Thence along said right of way line, North 03°00'39" West (N 06°07'00" W, Ysleta Grant Block 44) a distance of 471.30 feet to "TRUE POINT OF BEGINNING" and containing 35,623 square feet or 0.818 acres of land more or less.

A Survey plat of even date accompanies this metes and bounds description.

All Bearings and coordinates are based on the Texas State Plane Coordinate System, Central Zone 4203, NAD 83. All distances and coordinates shown are surface and can be converted to Grid by dividing by a combination scale factor of 1.000233

Ron Conde, a Registered Professional Land Surveyor, do hereby certify that the above description is true and correct to the best of my knowledge and belief and that the property described herein was determined by a survey made on the ground under my direction and supervision.


Ron R. Conde
R.P.L.S. No. 5152



CONDE INC
ENGINEERING / LAND SURVEYING / PLANNING
6080 SURETY DRIVE / SUITE 100 / EL PASO, TEXAS 79905
(915) 592-0283 FAX (915) 592-0286 Firm No. 10078100

EXHIBIT B to Minute Order

NOTICE: This plat is a reproduction of the original survey plat and is not a substitute for the original survey plat. The original survey plat is on file in the office of the County Clerk, El Paso County, Texas, and is available for inspection and copying upon request. This plat is a reproduction of the original survey plat and is not a substitute for the original survey plat. The original survey plat is on file in the office of the County Clerk, El Paso County, Texas, and is available for inspection and copying upon request.

SYMBOL LEGEND

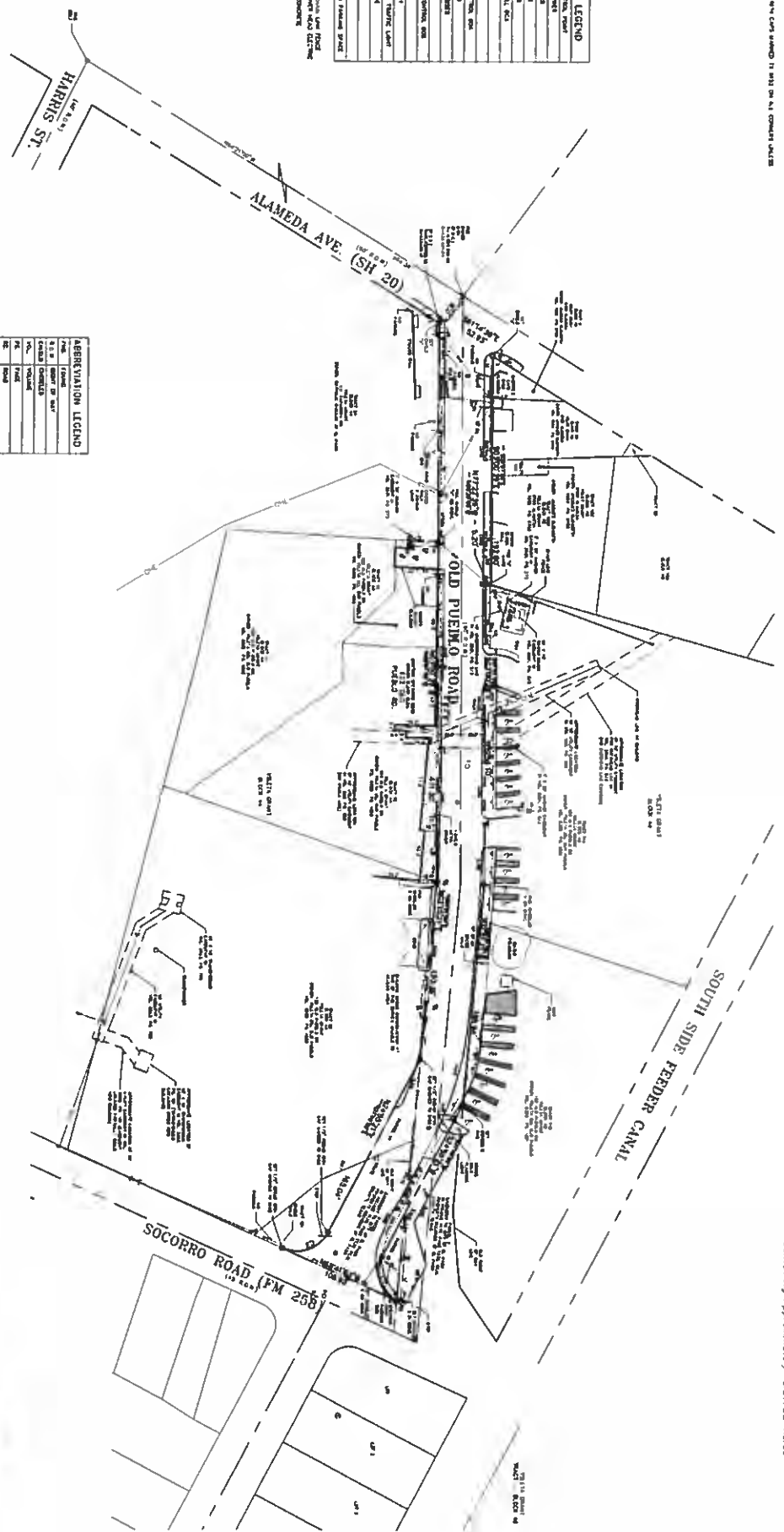
1	Flow Control Point
2	Landmark Street
3	Flow Control Point
4	Flow Control Point
5	Flow Control Point
6	Flow Control Point
7	Flow Control Point
8	Flow Control Point
9	Flow Control Point
10	Flow Control Point
11	Flow Control Point
12	Flow Control Point
13	Flow Control Point
14	Flow Control Point
15	Flow Control Point
16	Flow Control Point
17	Flow Control Point
18	Flow Control Point
19	Flow Control Point
20	Flow Control Point
21	Flow Control Point
22	Flow Control Point
23	Flow Control Point
24	Flow Control Point
25	Flow Control Point
26	Flow Control Point
27	Flow Control Point
28	Flow Control Point
29	Flow Control Point
30	Flow Control Point
31	Flow Control Point
32	Flow Control Point
33	Flow Control Point
34	Flow Control Point
35	Flow Control Point
36	Flow Control Point
37	Flow Control Point
38	Flow Control Point
39	Flow Control Point
40	Flow Control Point
41	Flow Control Point
42	Flow Control Point
43	Flow Control Point
44	Flow Control Point
45	Flow Control Point
46	Flow Control Point
47	Flow Control Point
48	Flow Control Point
49	Flow Control Point
50	Flow Control Point
51	Flow Control Point
52	Flow Control Point
53	Flow Control Point
54	Flow Control Point
55	Flow Control Point
56	Flow Control Point
57	Flow Control Point
58	Flow Control Point
59	Flow Control Point
60	Flow Control Point
61	Flow Control Point
62	Flow Control Point
63	Flow Control Point
64	Flow Control Point
65	Flow Control Point
66	Flow Control Point
67	Flow Control Point
68	Flow Control Point
69	Flow Control Point
70	Flow Control Point
71	Flow Control Point
72	Flow Control Point
73	Flow Control Point
74	Flow Control Point
75	Flow Control Point
76	Flow Control Point
77	Flow Control Point
78	Flow Control Point
79	Flow Control Point
80	Flow Control Point
81	Flow Control Point
82	Flow Control Point
83	Flow Control Point
84	Flow Control Point
85	Flow Control Point
86	Flow Control Point
87	Flow Control Point
88	Flow Control Point
89	Flow Control Point
90	Flow Control Point
91	Flow Control Point
92	Flow Control Point
93	Flow Control Point
94	Flow Control Point
95	Flow Control Point
96	Flow Control Point
97	Flow Control Point
98	Flow Control Point
99	Flow Control Point
100	Flow Control Point

ABBREVIATION LEGEND

1	Flow Control Point
2	Landmark Street
3	Flow Control Point
4	Flow Control Point
5	Flow Control Point
6	Flow Control Point
7	Flow Control Point
8	Flow Control Point
9	Flow Control Point
10	Flow Control Point
11	Flow Control Point
12	Flow Control Point
13	Flow Control Point
14	Flow Control Point
15	Flow Control Point
16	Flow Control Point
17	Flow Control Point
18	Flow Control Point
19	Flow Control Point
20	Flow Control Point
21	Flow Control Point
22	Flow Control Point
23	Flow Control Point
24	Flow Control Point
25	Flow Control Point
26	Flow Control Point
27	Flow Control Point
28	Flow Control Point
29	Flow Control Point
30	Flow Control Point
31	Flow Control Point
32	Flow Control Point
33	Flow Control Point
34	Flow Control Point
35	Flow Control Point
36	Flow Control Point
37	Flow Control Point
38	Flow Control Point
39	Flow Control Point
40	Flow Control Point
41	Flow Control Point
42	Flow Control Point
43	Flow Control Point
44	Flow Control Point
45	Flow Control Point
46	Flow Control Point
47	Flow Control Point
48	Flow Control Point
49	Flow Control Point
50	Flow Control Point
51	Flow Control Point
52	Flow Control Point
53	Flow Control Point
54	Flow Control Point
55	Flow Control Point
56	Flow Control Point
57	Flow Control Point
58	Flow Control Point
59	Flow Control Point
60	Flow Control Point
61	Flow Control Point
62	Flow Control Point
63	Flow Control Point
64	Flow Control Point
65	Flow Control Point
66	Flow Control Point
67	Flow Control Point
68	Flow Control Point
69	Flow Control Point
70	Flow Control Point
71	Flow Control Point
72	Flow Control Point
73	Flow Control Point
74	Flow Control Point
75	Flow Control Point
76	Flow Control Point
77	Flow Control Point
78	Flow Control Point
79	Flow Control Point
80	Flow Control Point
81	Flow Control Point
82	Flow Control Point
83	Flow Control Point
84	Flow Control Point
85	Flow Control Point
86	Flow Control Point
87	Flow Control Point
88	Flow Control Point
89	Flow Control Point
90	Flow Control Point
91	Flow Control Point
92	Flow Control Point
93	Flow Control Point
94	Flow Control Point
95	Flow Control Point
96	Flow Control Point
97	Flow Control Point
98	Flow Control Point
99	Flow Control Point
100	Flow Control Point

CANAL TABLE

CANAL NUMBER	LENGTH (FEET)	WIDTH (FEET)	DEPTH (FEET)	AREA (SQ. FEET)	VOLUME (CU. FEET)	PERCENTAGE OF TOTAL VOLUME
1	1000	10	2	20000	100000	10%
2	1000	10	2	20000	100000	10%
3	1000	10	2	20000	100000	10%
4	1000	10	2	20000	100000	10%
5	1000	10	2	20000	100000	10%
6	1000	10	2	20000	100000	10%
7	1000	10	2	20000	100000	10%
8	1000	10	2	20000	100000	10%
9	1000	10	2	20000	100000	10%
10	1000	10	2	20000	100000	10%



1. This plat is a reproduction of the original survey plat and is not a substitute for the original survey plat. The original survey plat is on file in the office of the County Clerk, El Paso County, Texas, and is available for inspection and copying upon request.



El Paso Department of Transportation
PARCEL PLAT
 Containing Approximately 0.81798 Acres

PLAT OF SURVEY
 BEING A PORTION OF OLD PUEBLO ROAD
 CUT OF BLOCKS 44 AND 48, YESAIA GRANT
 CITY OF EL PASO, EL PASO COUNTY, TEXAS
 Containing Approximately 0.81798 Acres