



Artistic rendering of new bridge, not drawn to scale.

TxDOT graphic

## CURRENT STATUS

The bridge does not meet the standards needed for the future Harris County Flood Control District improvement project.

## PROPOSED IMPROVEMENTS

- Replace the bridge structure to increase the structural integrity and meet current design standards, as well as improving the roadway approaches.
- The new bridge structure will accommodate paved shoulders and a shared use path.

## PURPOSE

- The purpose of the projects is to improve safety by replacing a aging functionally obsolete local bridge, owned by the City of Pearland.
- The project will bring the bridge up to current design standards, and prepare for the upcoming HCFCD Clear Creek Flood Management Project (\$18M).

This project does not require additional Right-of-Way.

## CONSTRUCTION TIMING

Closure of the bridge along Country Club Drive at Clear Creek will occur in the fall of 2023 and will remain closed for the duration of the project, which is approximately 12 months.

The closure will allow bridge construction activities such as demolition, foundation work and beam installation.

TxDOT will work with the contractor to expedite construction.

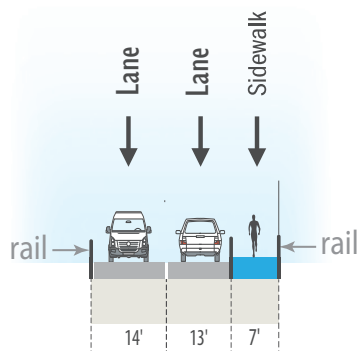
## ESTIMATE COSTS

Total Project Cost	<b>\$3.17 Million</b>
Federal Participation	<b>\$2.2 Million</b>
TxDOT Participation	<b>\$0.37 Million</b>
City of Pearland Participation	<b>\$0.53 Million</b>

SOURCE: TxDOT

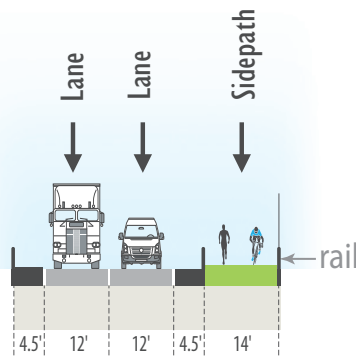
TxDOT graphics

## EXISTING TYPICAL SECTION



SOURCE: Illustrations are not drawn to scale.

## PROPOSED TYPICAL SECTION



TxDOT graphic

## LOCATION MAP

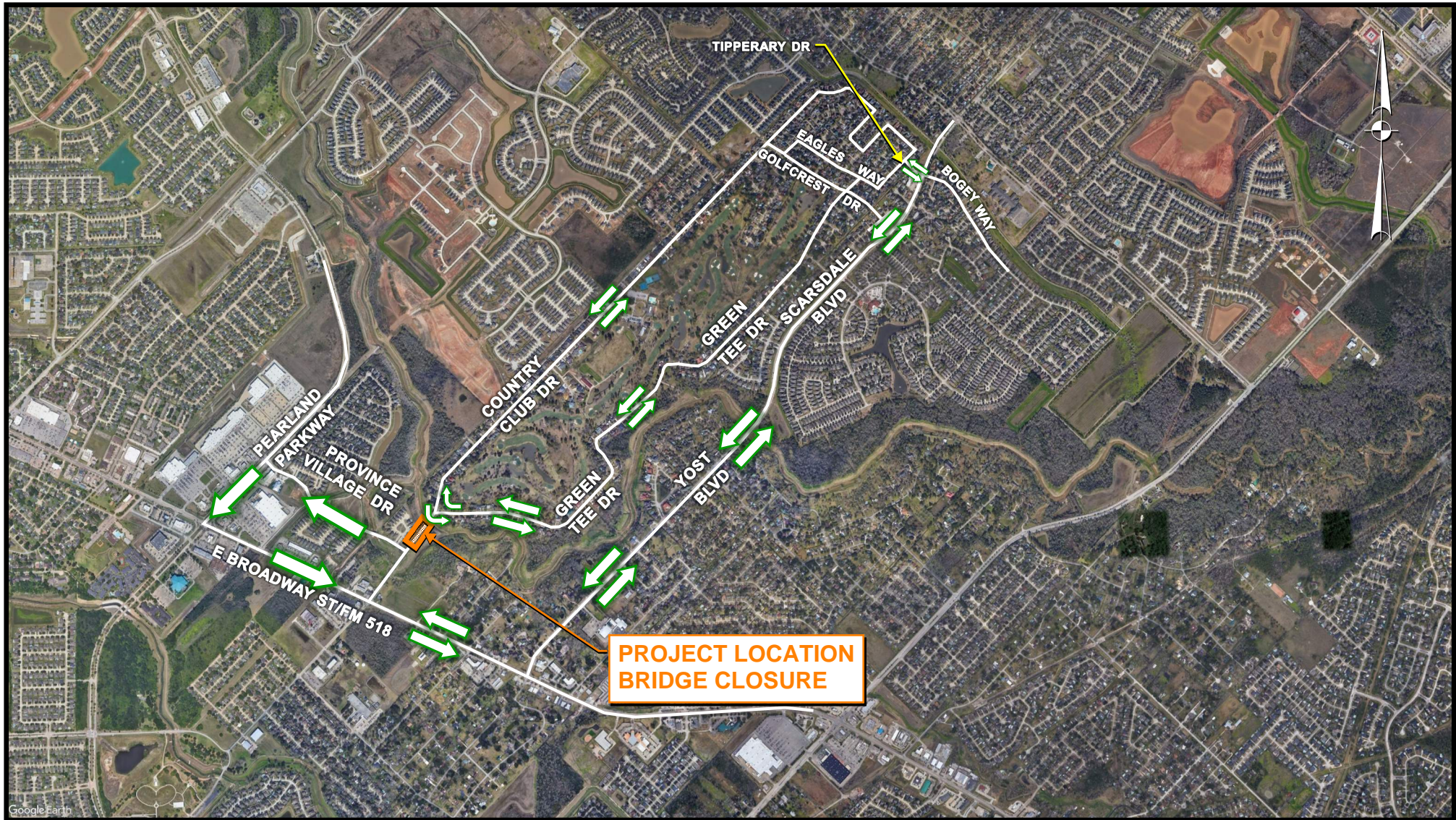


## TxDOT Contacts:

**Public Information Officer**  
 Danny Perez  
 713-802-5077  
**Brazoria Area Office**  
 979-864-8500



Follow us on Twitter at  
 @TxDOTHouston



# COUNTRY CLUB DRIVE TRAFFIC DETOUR

MAP NOT TO SCALE



Visit the TranStar website for Road Closure Information at:  
<https://traffic.houstontranstar.org/construction/>