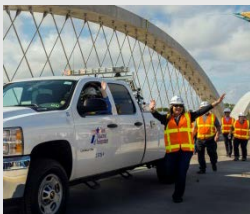
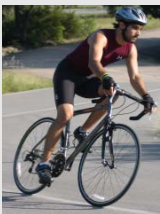
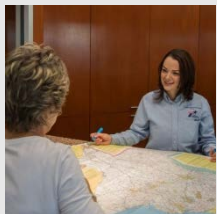




TEXAS DEPARTMENT OF TRANSPORTATION



CAPITAL- ALAMO CONNECTION STUDY

AAMPO TRANSPORTATION POLICY BOARD BRIEFING



December 4, 2017

What is the Capital-Alamo Connection Study?

A JOINT EFFORT BY:



OBJECTIVE:

To develop a regional strategy to enhance mobility and identify infrastructure, policy and technology solutions for the Greater Austin-San Antonio region.

BY:

1. defining the need/ market
2. identifying options
3. recommending potential solutions

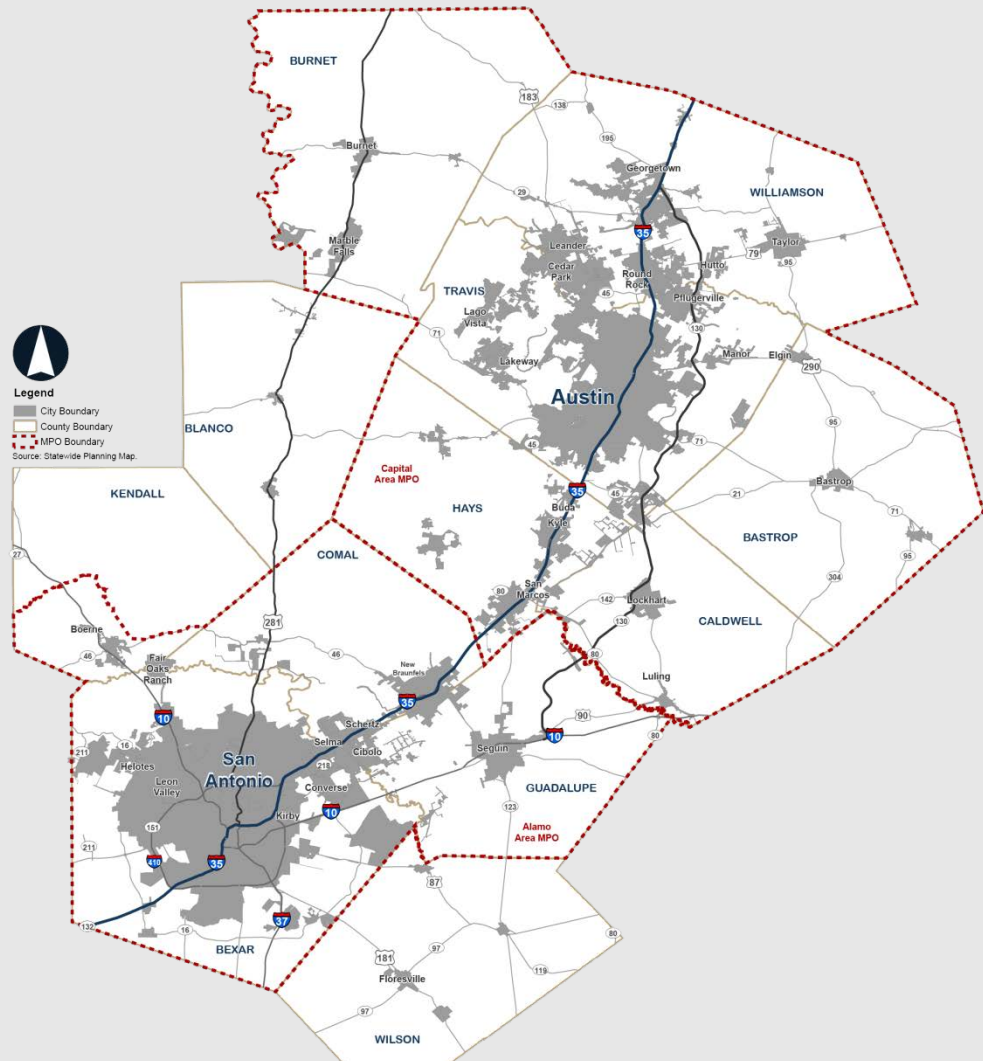
OUTCOME:

An implementable system of improvements organized into short-, mid- and long-term transportation improvements

MULTI-REGIONAL LEVEL OF ANALYSIS

Twelve counties in the area of influence of the Metropolitan areas

This includes ALL member counties of both Metropolitan Planning Organizations



Capital-Alamo Schedule and Deliverables



Joint MPO Workshop Objectives

1. Review Current and Forecasted Conditions
2. Discuss Problem and Vision
3. Define Needs and Challenges
4. Propose Next Steps



WHAT IS OUR CURRENT PROBLEM?

Lack of

Transportation options
i.e. Transit

Political will

Funding options and sources

Focus

Better regional coordination

→ Congestion and traffic on I-35

→ Restricted right-of-ways

→ Changing demographics

→ Better planning for freight

→ Potential new technology implications



WHAT WOULD YOU LIKE IN THE FUTURE?

- Better freight management
- Multimodal solutions
- Maximization of resources
- Innovative thinking!
- Land use and Transportation planning integration
- Project phasing and transparency
- Local solutions
- Technology-based solutions
- Environmental stewardship



ROUNDTABLES

Report Back - Needs



- More understanding of new technologies
- Case Studies review
- Implementation of existing technologies
- More coordination with industry
- Consideration of potential implications



- Land use regulations
- State investment and Federal funding
- Embrace growth
- Corridor preservation
- Consistency in priorities



- Multimodal options
- Maximize existing facilities
- Improved connectivity
- Creative funding solutions
- Flexible infrastructure

Report Back - Challenges



- Public –Private Partnerships
- Uncertainty about the future
- Technology’s accelerated progression
- Public perception
- Definition of infrastructure needs



- Project delivery processes
- Better coordination with freight industry
- Cultural shift away from private vehicles
- Inconsistent policies
- New funding strategies



- Efficient and convenient options
- Political will and capital
- Physical constraints and hurdles to cooperation
- System connectivity
- Affordability

Next Steps

1. Reach out to additional stakeholders
2. Continue data collection and analysis
3. Identify and evaluate possible solutions
4. Provide updates to you as we progress
5. Hold a second workshop this Spring

Questions

For more information, please contact:

www.CAMPOTexas.org

Doise Miers

300 N. Interstate 35, Ste. 630, Austin, TX 78705

Phone: 512.215.8225 Fax: 737.708.8140

www.alamoareampo.org

Jeanne Geiger

825 S. St. Mary's Street, San Antonio, TX 78205

Phone: 210.227.8651 Fax: 210.227.9321