



TxDOT
RURAL TIP

2027 – 2030
Beaumont District

Welcome!

Welcome to the Beaumont District Rural Transportation Improvement Program Virtual Public Meeting for the 2027-2030 program! We are here today to go over the projects to be included in the upcoming 2027-2030 Rural TIP.

Agenda

- | | |
|--|---|
| 01 Safety Minute | 05 How Projects are Selected for the Rural TIP |
| 02 Beaumont District and its boundaries | 06 Projects by County |
| 03 The Rural Transportation Improvement Program (TIP) | 07 Funding |
| 04 How the Rural TIP Impacts You | 08 Next Steps |

Script:

Today we will go over the counties in Beaumont district and all the roads under the district's care. We will also review the basics of what is the Rural TIP? and why is it important for you to be here with us today. We will explain how the projects included in the program are selected and classified in order to make the most of the program.

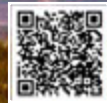
Once you understand all of this, you will have the opportunity to review the projects the Beaumont District has included in the 2027-2030 program. We will also go over funding, answering questions on "where does the money to pay for these projects come from? and how it get distributed?". Lastly, we will outline all the options you have to comment on the district's projects and their priority.

HELP MAKE TEXAS SAFER FOR EVERYONE

DRIVE *like a* TEXAN

Kind. Courteous. Safe.

DriveLikeATexan.com



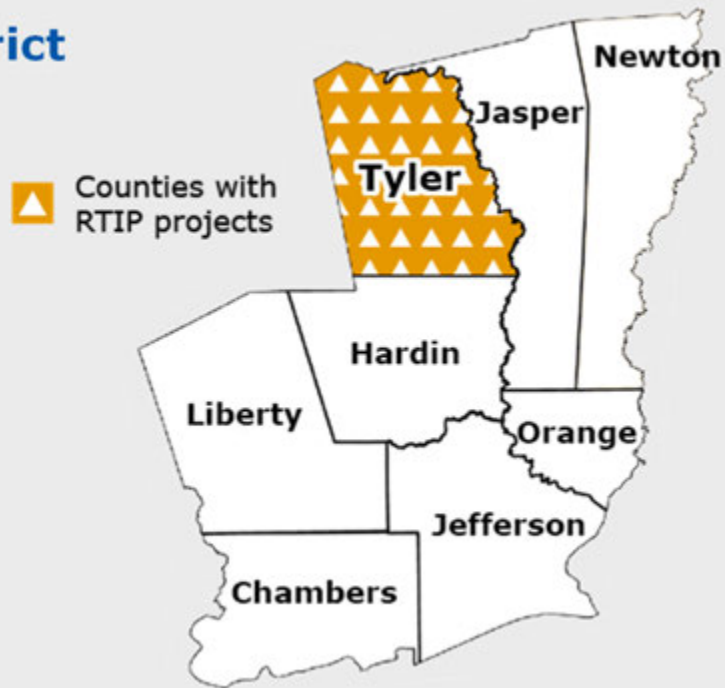
Drive like a Texan is all about saving lives. It's a reminder for everyone in Texas to treat each other with a little bit of the kindness, respect, and neighborly spirit we're famous for, especially on the road. By showing courtesy and care behind the wheel the same way we would in person, we can make our roads safer for all.

Kind - It's that simple. Treat others the way you want to be treated. Say thanks by giving a small wave, or just a friendly nod.

Courteous - Courtesy isn't just about being polite in person. Show respect by letting others merge, giving plenty of space, and practicing patience on the road. Small actions save lives.

Safe - The most important part of any journey is arriving safely. Not only do you keep yourself safe, but you also help protect every driver, passenger, biker, and pedestrian sharing the road.

Beaumont District Boundaries



2027-2030 Rural TIP

4

Script:

The Beaumont District includes all of the counties shown in the map: Chambers, Hardin, Jasper, Jefferson, Liberty, Newton, Orange, and Tyler. While other work will be performed throughout the district in the next four years, the projects included in the 2027-2030 Rural TIP are located only in Tyler County.

Rural Transportation Improvement Program (TIP)

THE RURAL TIP

includes both grouped projects and individually listed projects that include added-capacity projects and regionally significant projects to be funded outside of MPO boundary, and within a TxDOT district during the next four years, including those eligible for federal funding.

It can include projects for :



A Rural TIP project is anticipated to be funded within the next four years.

It shows regional agreement (community-region-state) on the need of a project.

2027-2030 Rural TIP

5

Script:

The Rural Transportation Improvement Program is a list of local projects to be funded in a TxDOT District over the next 4 years. This means that all projects included in the list are expected to be underway within 4 years following its approval. These are the changes you can expect to go to contract in the near future!

It is multimodal; which means that it can include projects relating to highways, bicycle and pedestrian facilities, transit services, and freight projects as well as the preliminary studies used to define those projects.

Rural TIP is meant to show regional agreement on the need and priority of a transportation project, so all parties involved can be sure they are making the best investment for the community. It is also expected to be consistent with the projects and objectives included in the regional Long Range Transportation Plans, to ensure that all agencies are working towards the same goal.

The Rural TIP is a part of the Statewide Transportation Improvement Program (STIP). Because the program's rules are established by Federal law, no project can receive federal funding unless it is listed in the Rural TIP!

How the Rural TIP Impacts You

The Rural TIP process includes opportunities to provide input on the priority of major projects that are listed on it.

Local and small projects around your community dealing with safety and access also get funding through the Rural TIP, for example:

- Road expansions
- Sidewalks
- Bike lanes
- Pavement repair or maintenance
- New or improved signals
- Turning lanes

By participating today, you are providing input in [number of projects included in this Rural TIP] projects!

2027-2030 Rural TIP

**You know
your
community
best!**

Tell us what
project
should come
first and why

6

Script:

It is important for you to participate because funding secured by this process is intended to address your communities' most immediate needs. By providing comments on the priority of the projects included, you are helping us identify regional priorities.

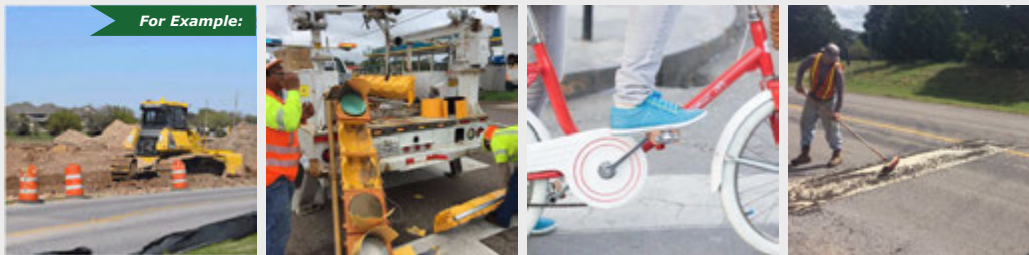
By reviewing the entire program in a single meeting you are: 1) having a regional impact, 2) helping us be more effective with your money, and 3) ensuring that we are investing where we should.

How Projects are Selected for the Rural TIP

Projects are identified and selected by evaluating existing and future needs based on:

current conditions and projections, statewide and regional plans, public input regarding transportation priorities

^ This would be you, right now!



2027-2030 Rural TIP

Script:

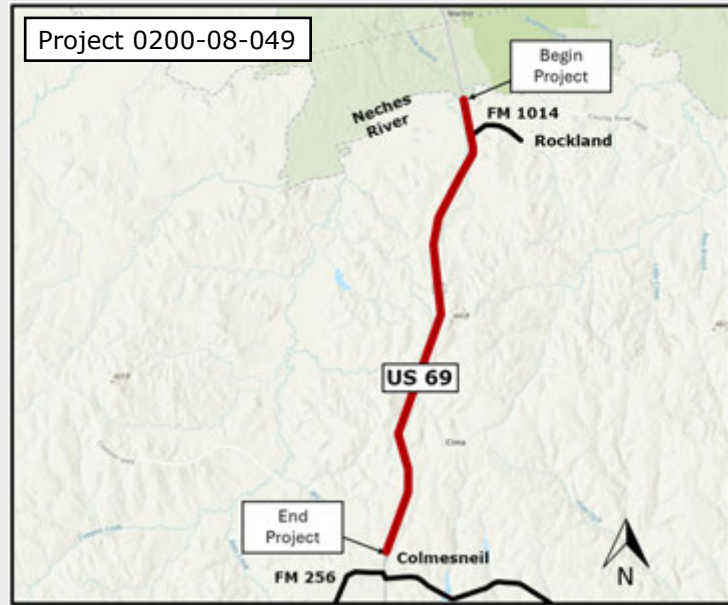
Rural Transportation Organizations, Metropolitan Planning Organizations and local governments are responsible for selecting projects within their boundaries.

TxDOT, through the District office, is responsible for selecting of all projects relating to the state transportation system and other national roadways. This includes Interstates, State and US Highways but most importantly this can also include the Farm-to-Market and Ranch-to-Market roads you use every day. The projects you will review today should respond to local needs!

It is our responsibility to provide you with the opportunity to provide input on which projects should be advanced.

Tyler County Projects

2027-2030 Rural TIP



8

Script:

This map shows the project included in the 2027-2030 Rural TIP for Tyler County. This project, as marked on the map, spans US 69 from the Jasper county line in the north near Rockland, down to the northern side of Colmesneil.

Rural TIP Tyler County Projects

CSJ	Highway	Limits from	Limits to	Project Description	Total Project Cost	Year of Expenditure	TIP Year
0200-05-036	US 69	Jasper County Line	1.35 mi. South of RRE 255	Widen existing 2-lane highway to 4-lane divided	\$109,819,908	2029	2029

Script:

The table shows the details of the project included in the 2027-2030 Rural TIP for Tyler County. This project would widen a segment of US 69 from the existing two-lane highway to a four-lane divided highway. As mentioned, the segment begins at the Jasper county line in the north and ends 1.35 miles south of RRE 255 in the south, near Colmesneil. The project would cost nearly \$110 million and would be included in the year 2029 of the TIP.

Funding

The Rural TIP is a fiscally constrained list of projects that functions as a budgeting tool for our district.

Funds can come from:

- **Federal Government**
 - **Majority through** the Federal Highway and Transit Administrations
- **State**
 - **Majority through TxDOT's** Unified Transportation Program funding categories
- **Region**
- **Local**

2027-2030 Rural TIP

10

Script:

The Rural TIP functions as a budget list for the District. Therefore, it is fiscally constrained. Like the budget of a household, the Rural TIP has to be realistic about the amount of money available to covers all the needs. Frequently we identify more improvements than we have money to implement. This means prioritizing according to those items that are most necessary.

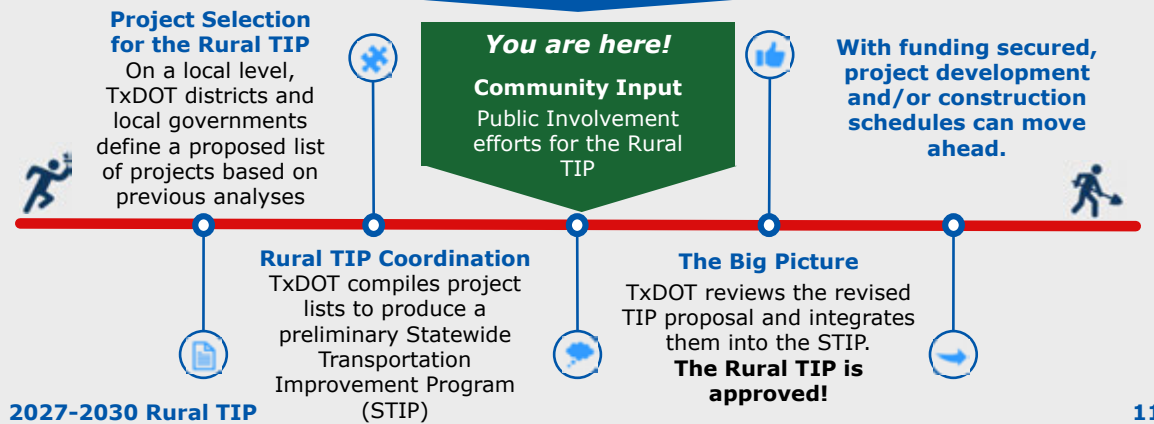
We've discussed the list but where is the money coming from? Funds can come from multiple sources:

- 1) The Federal Government, through the establishment of the Infrastructure Investment and Jobs Act (IIJA), the federal government allocates these funds through the processes established by the Federal Highway and Transit Administrations.
- 2) TxDOT, like the Federal Government also allocates a section our budget for these projects through the Unified Transportation Program's 12 funding categories.
- 3) Region – regional entities will also allocate funding to certain transportation projects

And 4) the local governments. Once the need has been identified and the amount of federal monies has been defined, the Rural TIP helps local governments assess the funding requirements to match those of the federal and state government and their capacity to meet them.

Next Steps

In the Rural TIP Process



Script

The timeline above illustrates the Rural TIP process and where we are right now. Once comments have been collected and considered, if necessary, the Beaumont District can provide a revised Rural TIP for approval and integration into the Statewide document.

The Statewide Transportation Improvement Program (STIP) is an accumulation of all 24 district's Rural TIPs, and the 24 Metropolitan Planning Organization's TIPs, and additional Statewide Programs, for example: Texas Park and Wildlife Program, Federal Land, Tribal Projects, Statewide Transit, etc. The timeline above shows where in the Rural TIP process fits into this larger effort. Once the STIP is approved by the Federal government everyone's projects are considered approved.

Next Steps (Continued)

How to provide comments:

1. If attending an in-person meeting, fill out a comment card today and leave it with staff

2. Mail a comment to:

Texas Department of Transportation
Beaumont District, Attn: Rural TIP
8350 Eastex Freeway, Beaumont, Texas 77706

3. Or email a comment to:

Heather.seamon@txdot.gov, Attention: Rural TIP

Remember to submit your comments by May 22, 2026, at 11:59 P.M. to be included in the official summary of this meeting.

2027-2030 Rural TIP

12

Script:

Now that you are familiar with the Program, we want to hear what you think. Go ahead and download a comment card and mail it to us at the address on the screen.

You can also email in your comments to: heather.seamon@txdot.gov

Comments must be postmarked or otherwise received by May 22, 2026. Please make sure to send your comments before that date.

If after today, you would like more information or have any other questions feel free to reach out or visit the District Webpage for updates.

You are encouraged to discuss this information with your friends or family! Just remind them to make sure they submit their comments before May 22, 2026