

Welcome

US 290 Improvements Project

Informational Open House

Thursday, January 30, 2025, 5 PM to 6:30 PM
Chappell Hill Volunteer Fire Department Community Hall
Chappell Hill, TX 77426

Why am I here?

- Learn about the proposed changes to US 290
- Provide feedback on the project

National Environmental Policy Act (NEPA) Assignment to the Texas Department of Transportation

The environmental review, consultation, and other actions required by applicable Federal environmental laws for this project are being, or have been, carried out by TxDOT pursuant to 23 U.S.C. 327 and a Memorandum of Understanding dated December 9, 2019, and executed by FHWA and TxDOT.

La revisión ambiental, consultas y otras acciones requeridas por las leyes ambientales federales aplicables para este proyecto están siendo o han sido, llevado a cabo por TxDOT - en virtud de 23 USC 327 y un Memorando de Entendimiento fechado el 9 de diciembre del 2019, y ejecutado por la FHWA y el TxDOT.

CSJ (Project Number)

0114-10-108

Location

From 0.5 miles East of FM 577 to 0.2 miles West of FM 2447

Length

4.7 miles

Potential Construction Start

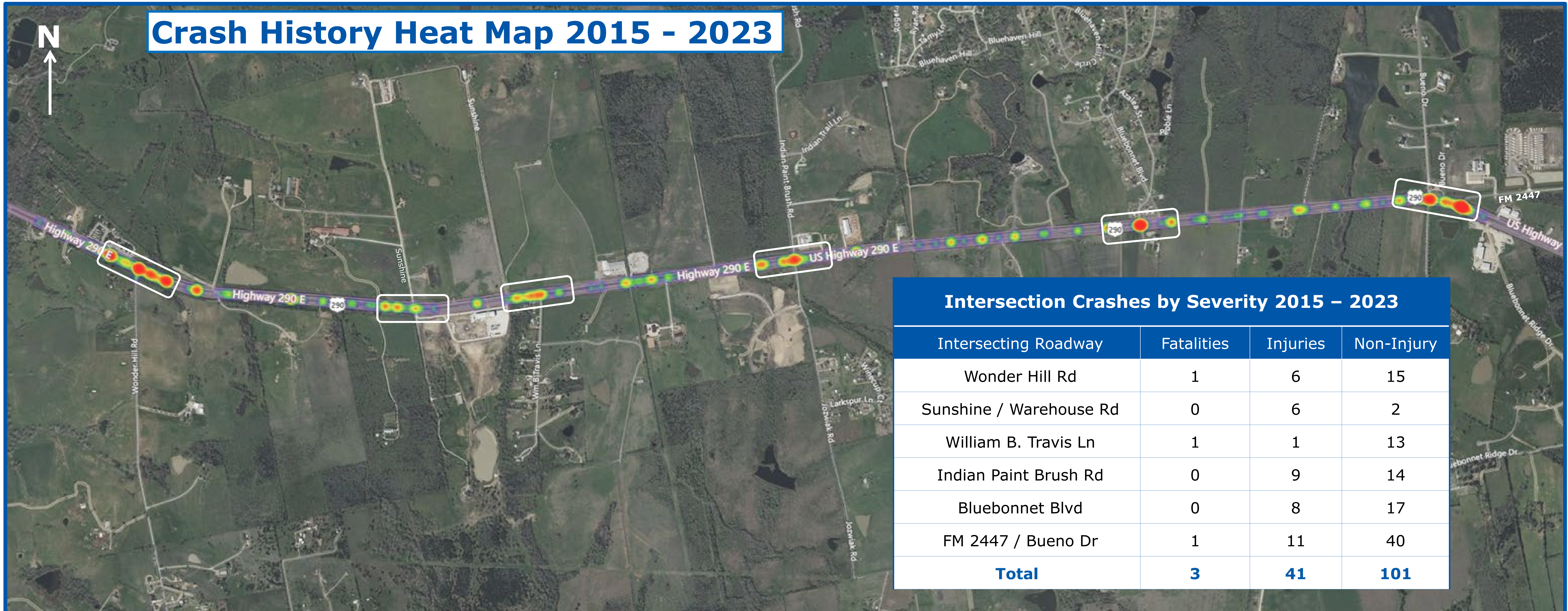
Late Summer 2025



Proposed Improvements

Reconfigure existing crossovers to Restricted Crossing U-turn (R-CUT) intersections at selected locations and close other crossovers to enhance safety and improve traffic flow along the corridor.

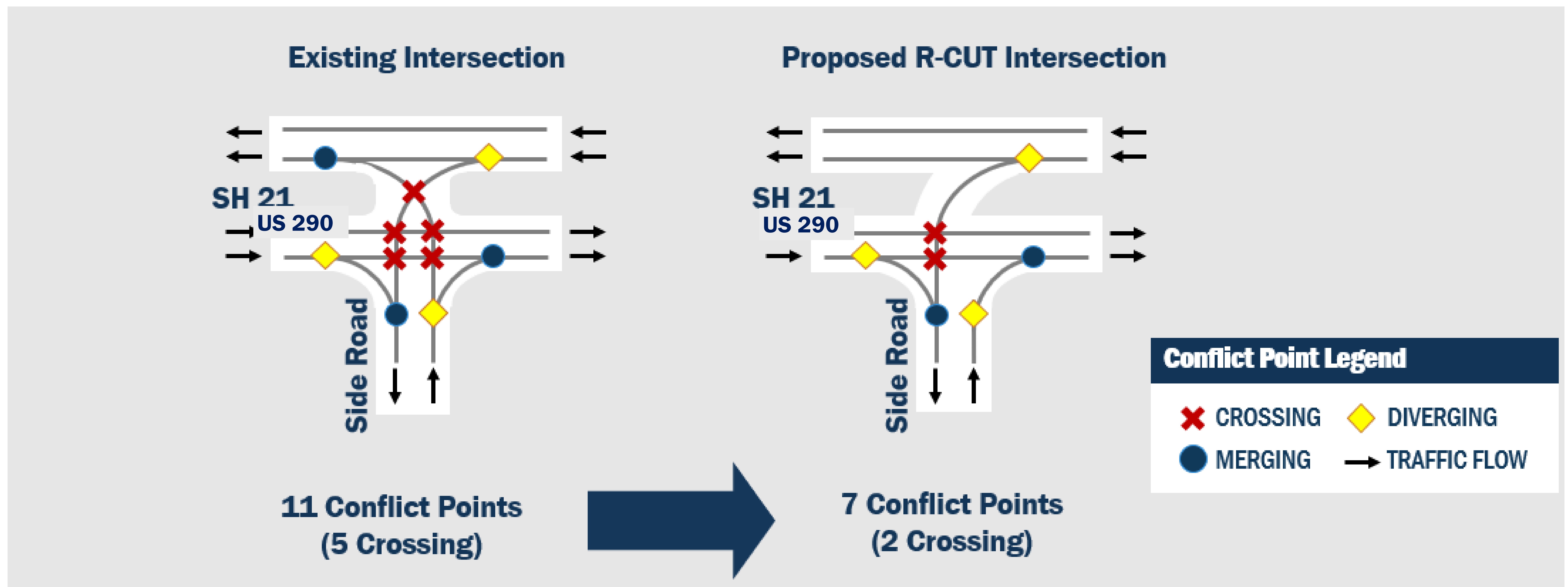
No new right-of-way would be required to construct the proposed improvements.



- 300 total crashes along the US 290 corridor
- 48% of crashes occur in the proximity of the intersections
- 2024 Average Daily Traffic – 30,000 vehicles per day
- Traffic volumes are projected to increase 77% by 2044

Why R-CUTs?




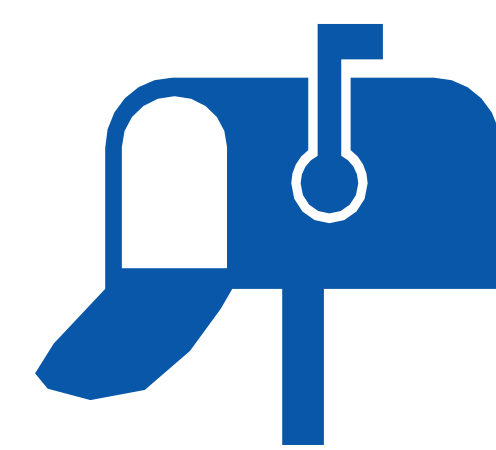
- Reduces number of conflict points where vehicles can collide
- Minimizes the potential for higher severity crashes
- Simplifies decision-making for drivers
- Federal Highway Administration (FHWA): R-CUT intersections have shown to reduce crashes by up to 30 to 50 percent—most notably, fatal crashes are significantly reduced.



Share Your Input

Please share any comments that TxDOT should be aware of prior to construction, including unique vehicle sizes, or operational constraints.

All comments must be received or postmarked by Friday, February 14, 2025,
to be included in the informational open house record.

 <h3>Comment Box</h3> <p>Place in comment box at in-person informational open house</p>	 <h3>Call</h3> <p>(979) 778-9231 Sydney Fox, TxDOT Bryan District Public Engagement Specialist</p>	 <h3>Email</h3> <p>BRY_PublicComment @txdot.gov</p>	 <h3>Mail</h3> <p>TxDOT Bryan District Office Attn: Sydney Fox 2591 North Earl Rudder Freeway, Bryan, Texas 77803</p>
---	--	---	---

Scan the QR code for additional project information and downloads or visit **www.txdot.gov**, keyword search "**US 290 Improvements**"

