

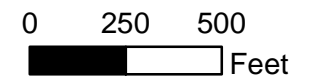
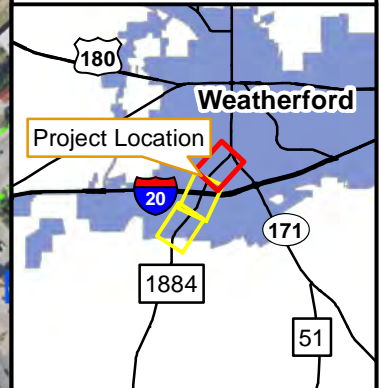
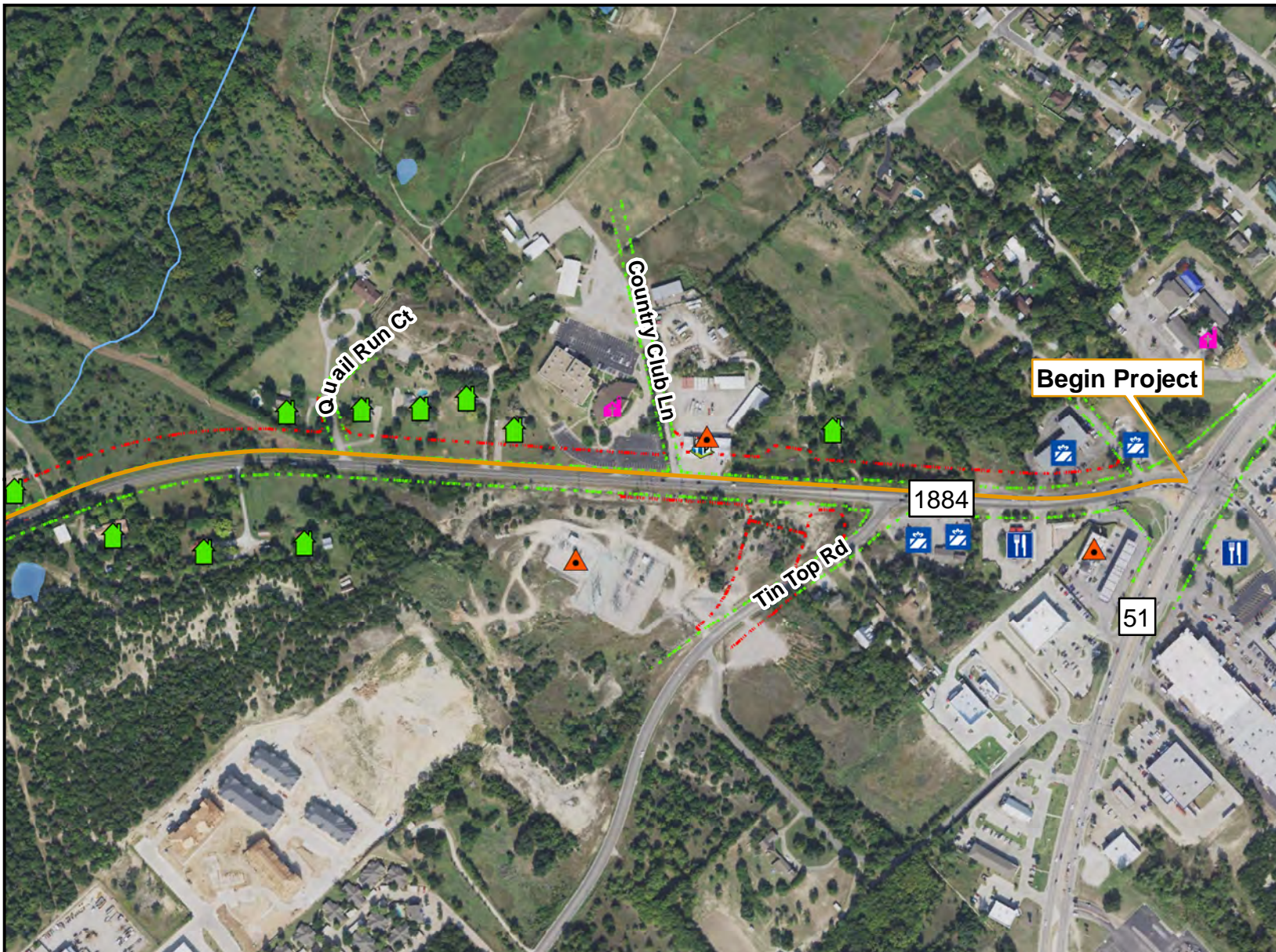
# Constraints Map

## FM 1884

From SH 171 to south of B.B. Fielder Road

Parker County, Texas  
CSJ: 1601-02-028

Page 1 of 3



Sources: FEMA (2014); TCEQ (2023); TNRIS (2020); USFWS (2023); USGS (2023)

### Legend

	Project Limits		Proposed ROW		Hazardous Materials Site of Concern		Commercial/Retail Facility		Pond/Lake
	Existing ROW		Drainage Easement		Public Facility		Educational Facility		Potential Wetland
	Utility Easement		Bank		Single-Family Home		Stream		100-Year Floodplain
			Place of Worship		Eating Establishment				



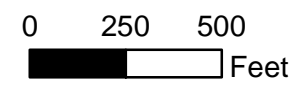
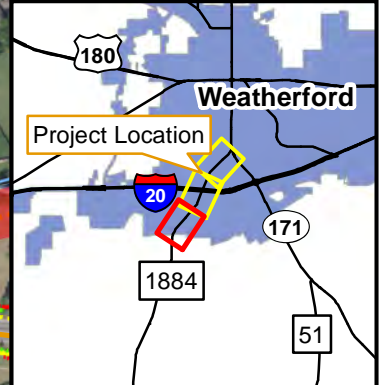
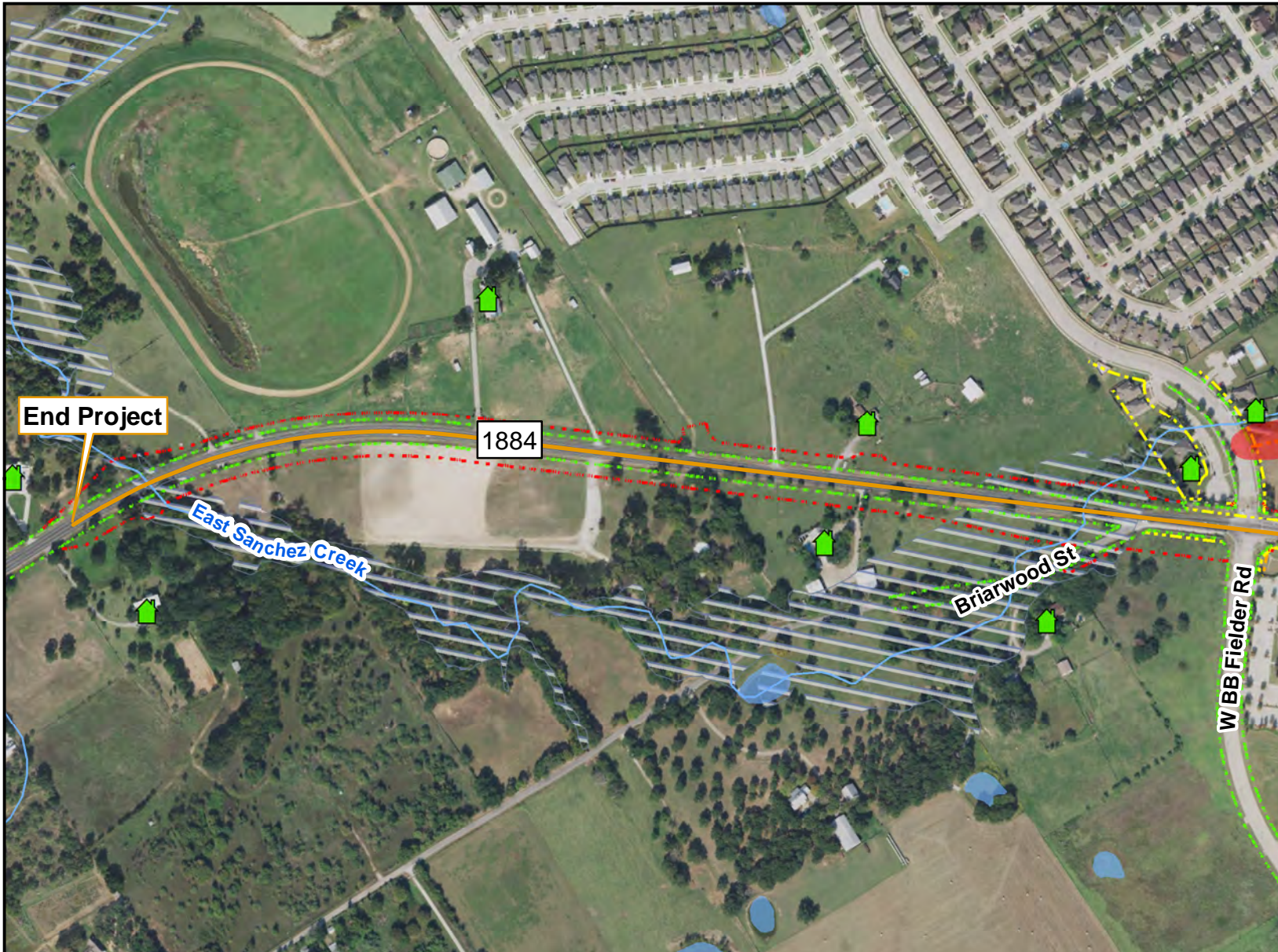
# Constraints Map

## FM 1884

From SH 171 to south of B.B. Fielder Road

Parker County, Texas  
CSJ: 1601-02-028

Page 3 of 3



Sources: FEMA (2014); TCEQ (2023); TNRIS (2020); USFWS (2023); USGS (2023)

### Legend

	Project Limits		Proposed ROW		Hazardous Materials Site of Concern		Commercial/Retail Facility		Pond/Lake
	Existing ROW		Drainage Easement		Public Facility		Educational Facility		Potential Wetland
	Utility Easement		Bank		Single-Family Home		Stream		100-Year Floodplain
			Place of Worship		Eating Establishment				