

SH 170 from east of I-35W to Intermodal Parkway

TxDOT Fort Worth District

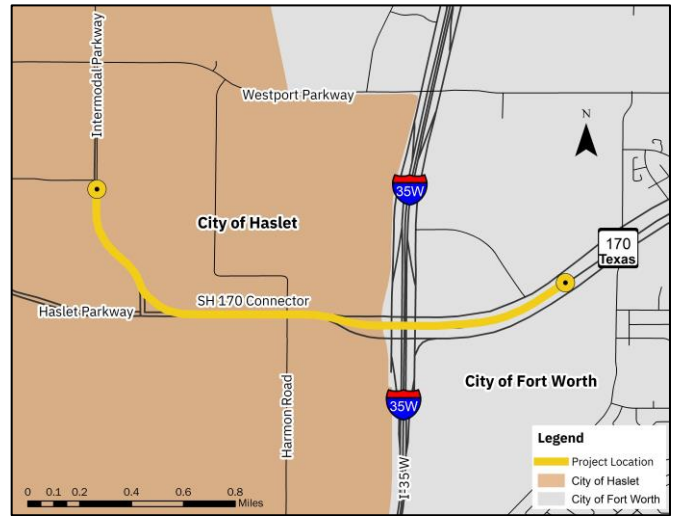
Tarrant County, Texas

CSJ: 0902-90-166

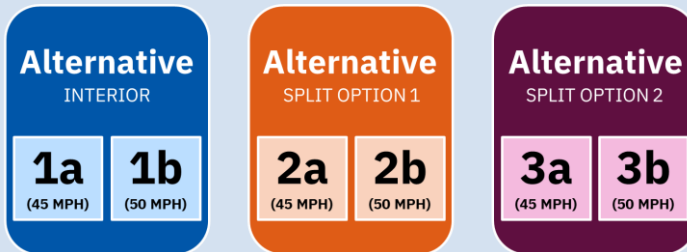
Project Overview

TxDOT is proposing to connect SH 170 from east of I-35W to Intermodal Parkway in Tarrant County, a length of approximately 1.8 miles.

The proposed project would construct an elevated direct connector bridge beginning on the SH 170 main lanes east of I-35W to Intermodal Parkway. This would improve connectivity and provide access for SH 170 traffic (including truck traffic) accessing Intermodal Port and the Perot Field Fort Worth Alliance Airport.



TxDOT considered six alternatives:

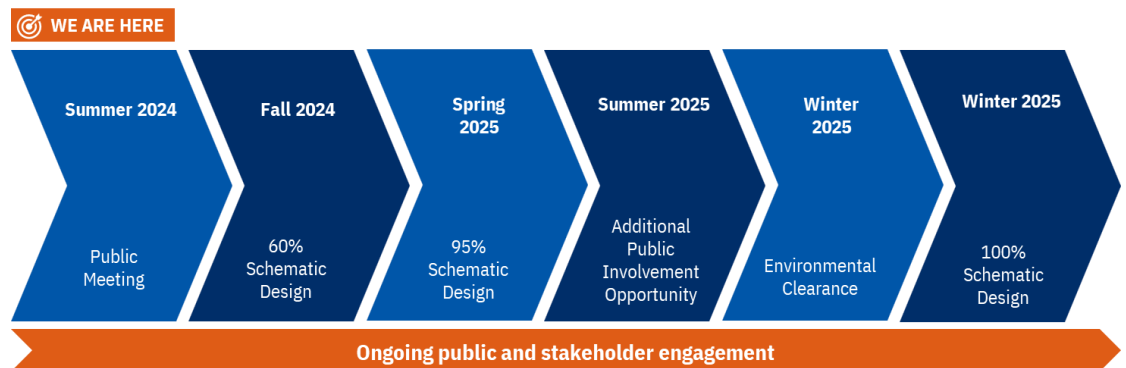


All six alternatives would connect SH 170 to Intermodal Parkway via new elevated direct connector bridges.

- The SH 170 direct connectors would consist of a 14-foot lane with shoulders in both directions.
- All six alternatives are the same east of Harmon Road.

Anticipated Project Timeline

**This timeline is approximate and subject to change.*



Advancement to right-of-way acquisition, utility adjustments, detailed design, and project construction is contingent upon the results of the environmental process and funding availability.

What are TxDOT's goals?

Identify a long-term solution that will:

- ✓ Improve regional connectivity.
- ✓ Improve mobility for existing and future traffic.
- ✓ Improve operational efficiency.

For questions, please contact:

- ✉ Nazrul.Chowdhury@txdot.gov
- ☎ (817) 370-6572
- 🌐 www.txdot.gov | keywords: "SH 170 from east of I-35W to Intermodal Parkway" or scan QR code →



TxDOT.gov
Hearings &
Meetings Page
for SH 170