



# **FM 1960 ACCESS MANAGEMENT STUDY**

## Virtual Public Meeting

This is the second Public Meeting regarding the FM 1960 Access Management Study conducted by the Texas Department of Transportation.

This meeting is being conducted virtually due to COVID impacts and restrictions.



# WELCOME!

**FM 1960** Access  
Management  
*Mobility // Safety // Access*

E. Gatewick (Just east of I-45) to BF 1960A (east of I-69), Harris County

## MEETING PURPOSE

**GAIN** understanding of the proposed improvements

**DISCUSS** benefits, costs, and improvement impacts

**PROVIDE** feedback to help us refine the improvements

## STUDY PURPOSE



Mitigate crashes



Alleviate traffic congestion and improve traffic flow



Improve access for businesses along FM 1960

## STUDY GOALS



Improve traffic safety



Improve mobility



Improve multimodal access



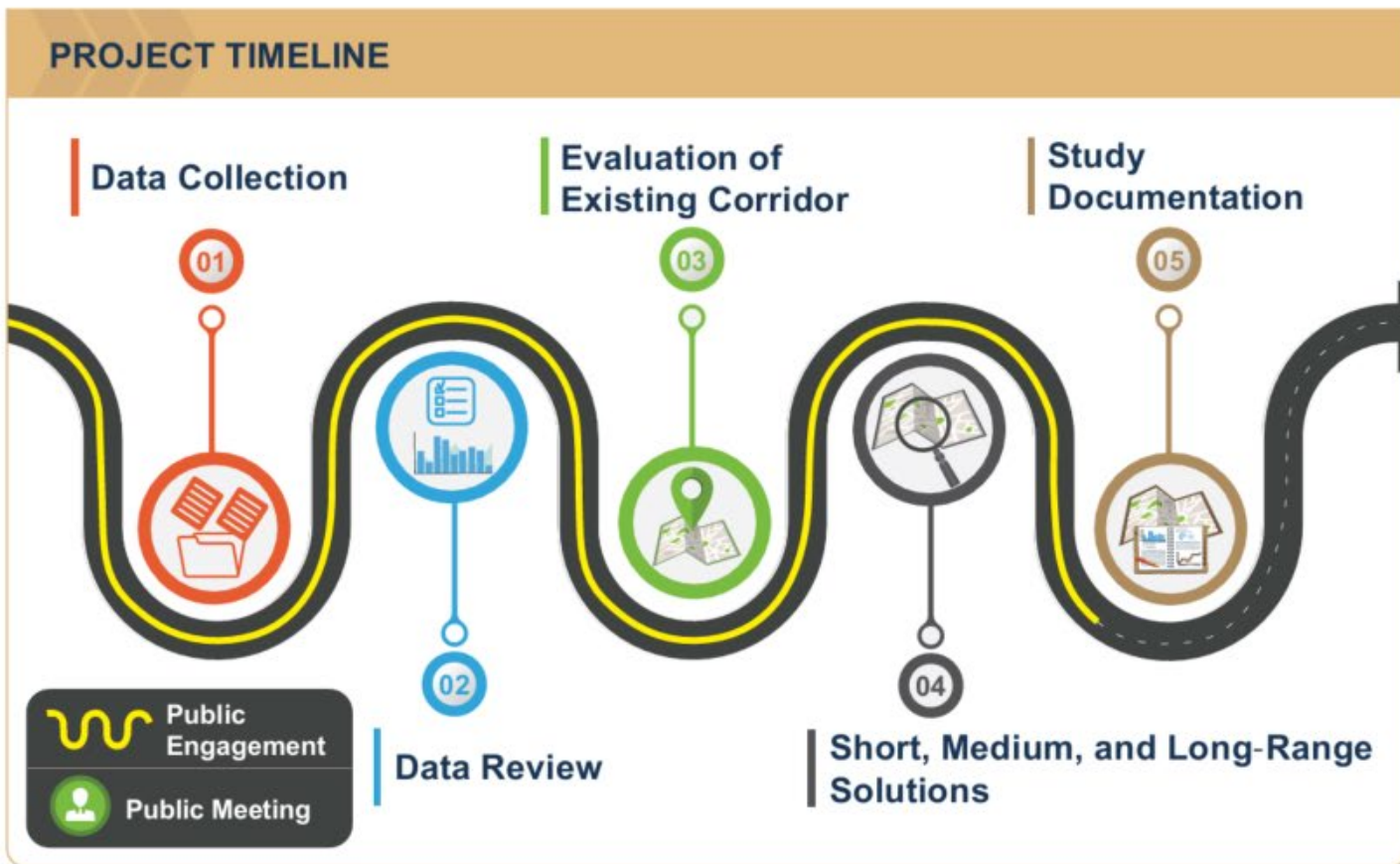
Improve access management



Provide an open public process



Preserve and enhance economic development





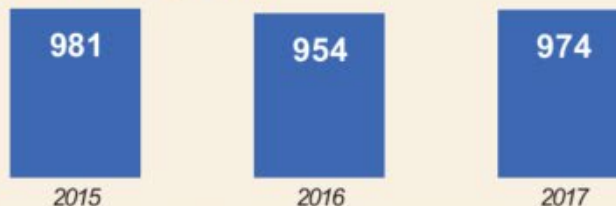
## FM 1960 from E. Gatewick to BF 1960A

Total Number of Crashes

# 2,909



### Crashes by Year



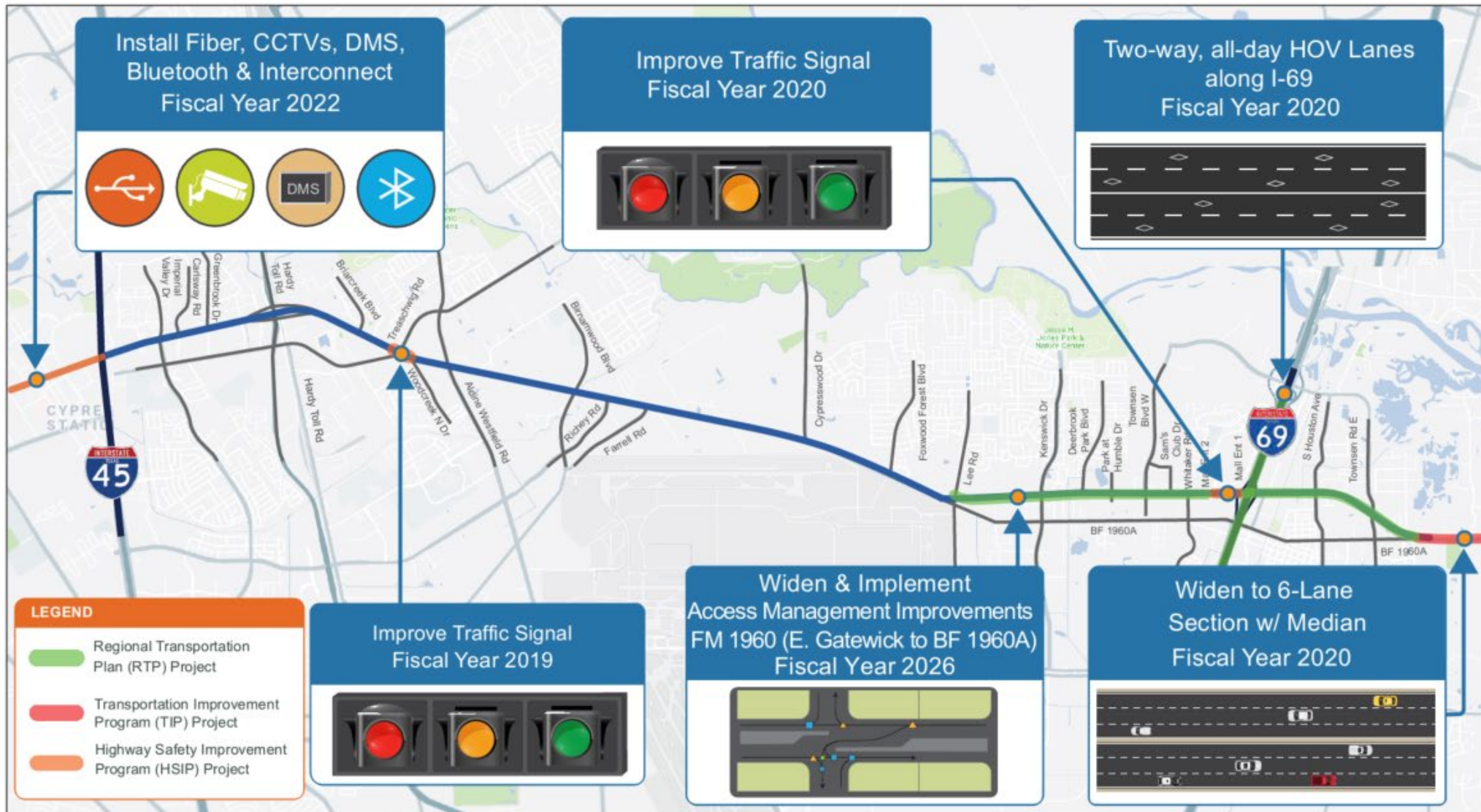
2,238 (77%)

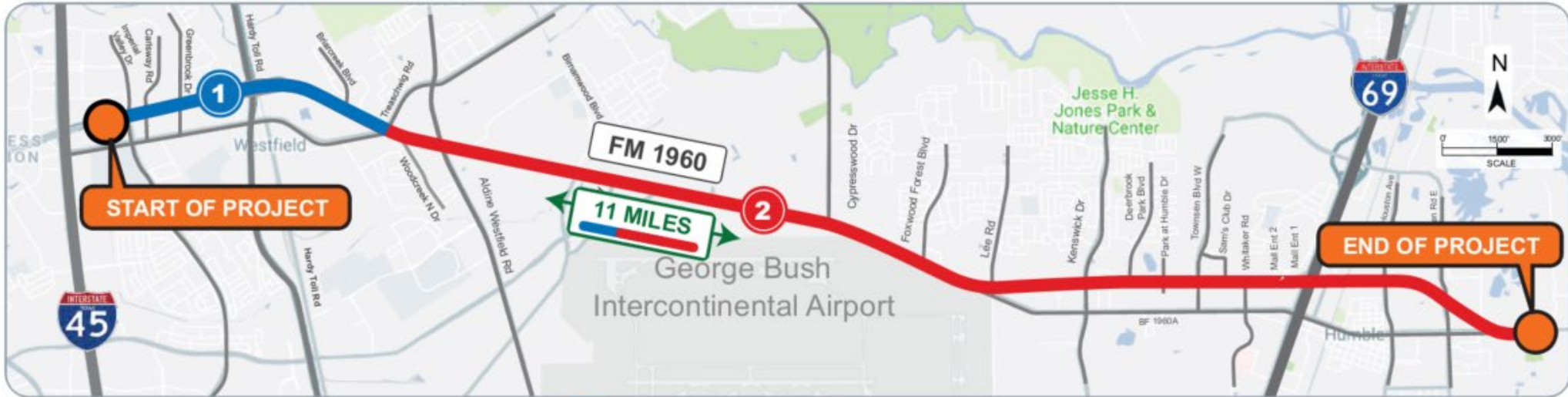
### Crashes by Severity



### Crashes by Type





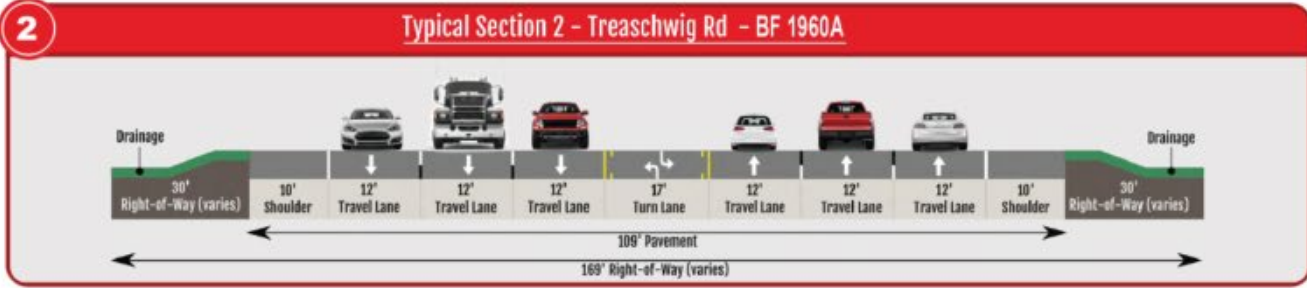
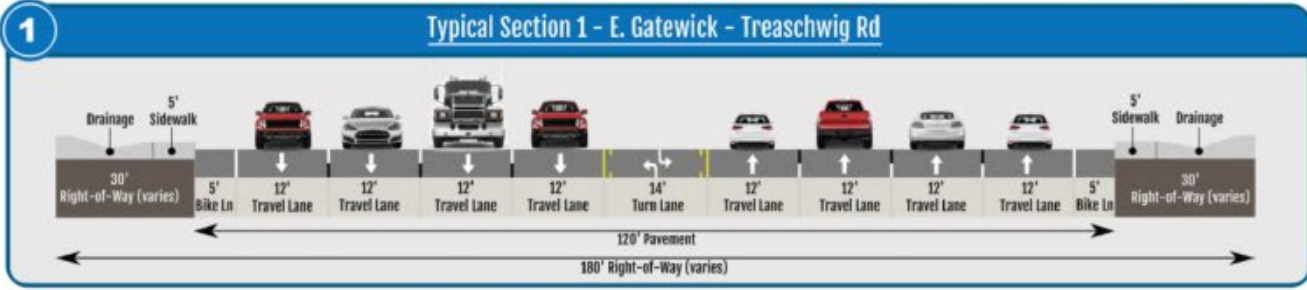


### STUDY AREA INFORMATION

**Limits: FM 1960 from E. Gatewick to BF 1960A**

- 11 Mile Study Segment
- 27 Signalized Intersections
- 9 Lane Section w/ TWLTL\* (E. Gatewick - Hardy Toll Rd)
- 7 Lane Section w/ TWLTL\* (Hardy Toll Rd - BF 1960A)
- 12 ft Travel Lanes
- 14-17 ft TWLTL
- 10 ft Outside Shoulders
- 35-55 MPH Posted Speeds

\*TWLTL - Two Way Left Turn Lane







## Public Meeting Participation Summary

- 24 members of the public attended
- 103 online engagement survey participants
- 285 individual comments received from the public
- Majority of the public meeting attendees supported improvements along FM 1960

\*First set of public meetings held in October 2019.

## Priorities Identified in the Online Engagement Survey

### Top 3 Roadway Daily Commute Priorities

- Improve Traffic Mobility  
67 ranked
- Improve Traffic Safety  
65 ranked
- Improve Traffic Signals  
56 ranked

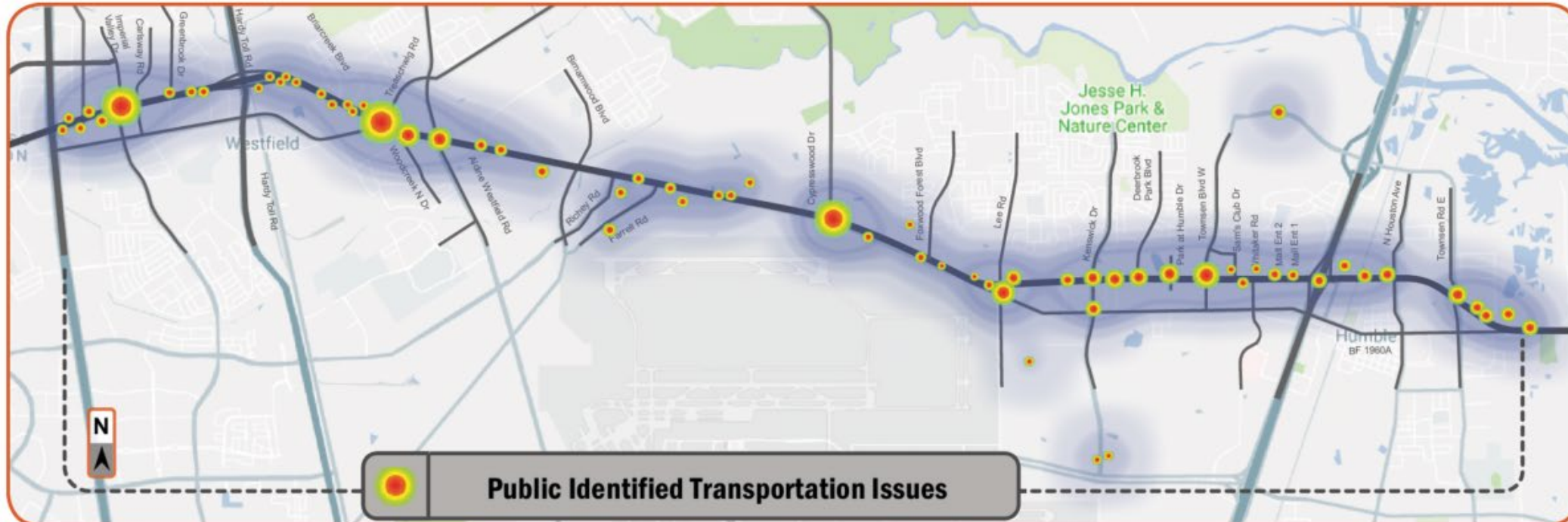
### Top 3 Access Management Priorities

- Coordinate Signal Timing  
67 ranked
- Add Turn Lanes  
41 ranked
- Consolidate Driveways  
37 ranked

### Daily Commute

67% of participants commuted daily on FM 1960

35% of participants had commutes longer than 30 minutes



## Corridor Improvements



Signal equipment upgrades and timing optimization



Install raised medians



Signing and striping enhancements



Provide bike lanes and shared-use shoulders



Provide buffer for bike lanes and shared-use shoulders



Install sidewalks in high pedestrian areas



Improve intersection turn lanes



Install Intelligent Transportation Systems for enhanced operations



Install continuous lighting

## Proposed



From E. Gatewick Ln to Treaschwig Rd

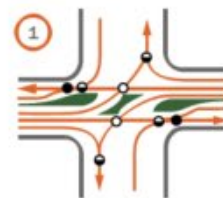


From Treaschwig Rd to Lee Rd & I-69 to BF 1960A

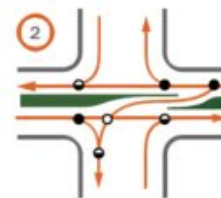


From Lee Rd to I-69

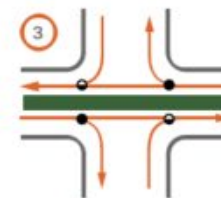
## Reducing Conflict Points



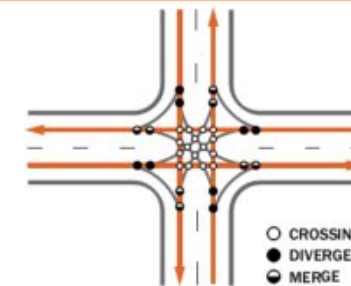
Dual Hooded Left-turn Openings



Hooded Left-turn Opening



Right-turns Only

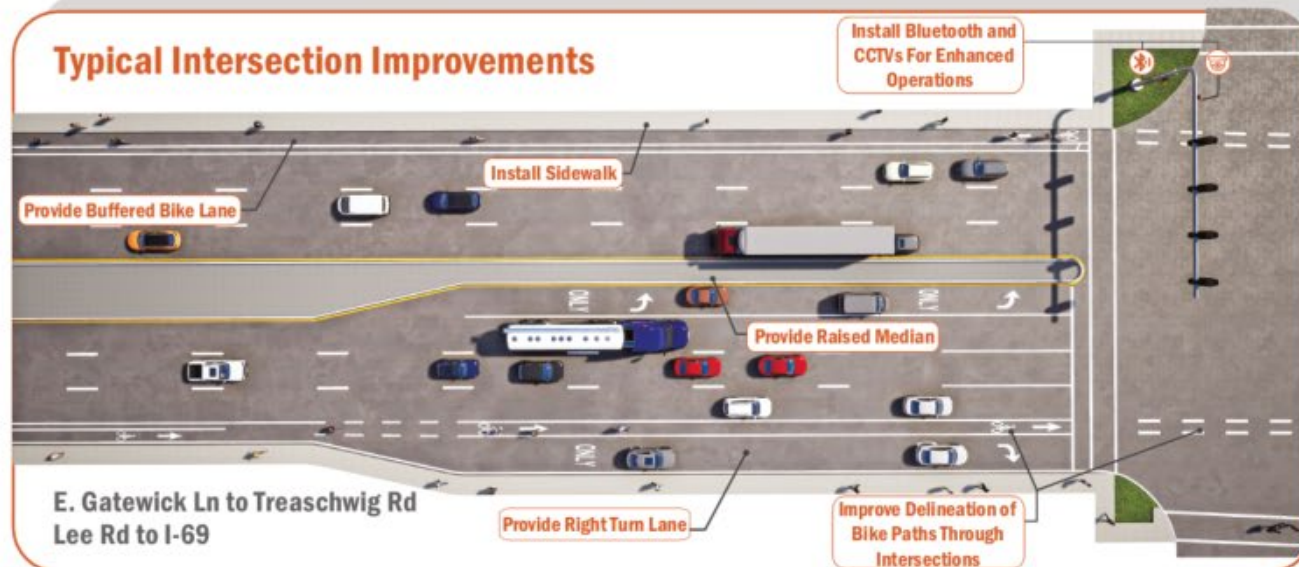


Full Access Intersection

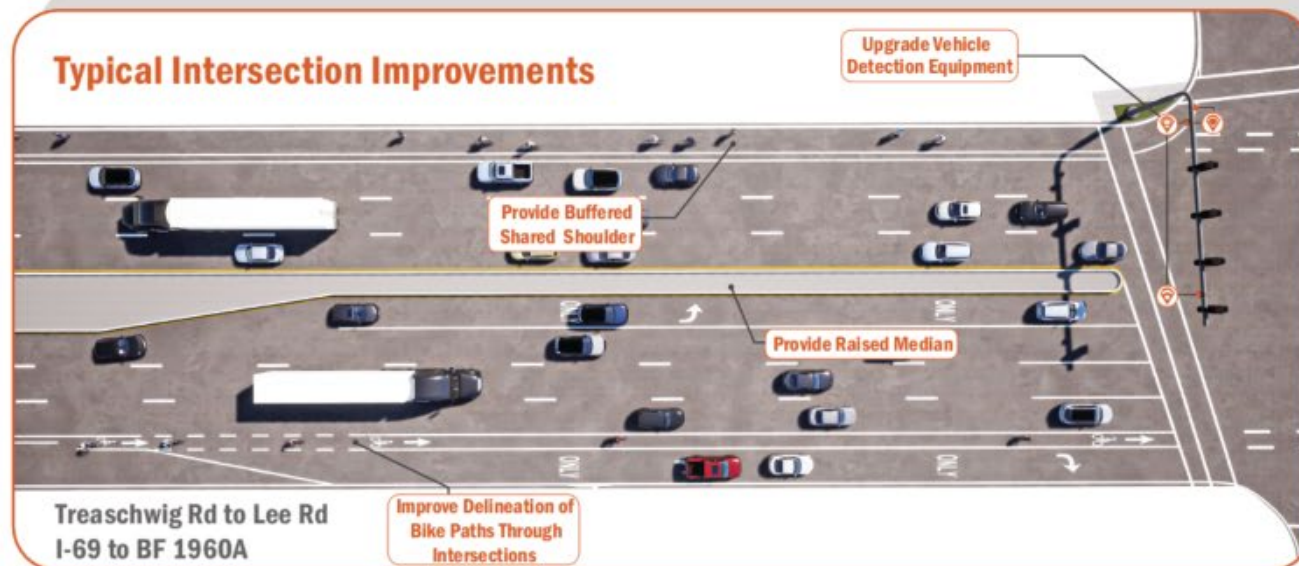
## Proposed Improvements

- Install turn lanes and improve storage lengths
- Improve bike lane delineation through intersections
- Install bike and pedestrian signage
- Perform vehicle detection upgrades
- Install Intelligent Transportation Systems for enhanced operations
- Provide raised medians
- Install sidewalk at intersections

### Typical Intersection Improvements



### Typical Intersection Improvements





**Access Management Benefit**

**Percentage Improvement**

**Savings**

**Safety**

19% reduction in total crashes

\$17.7 million/year

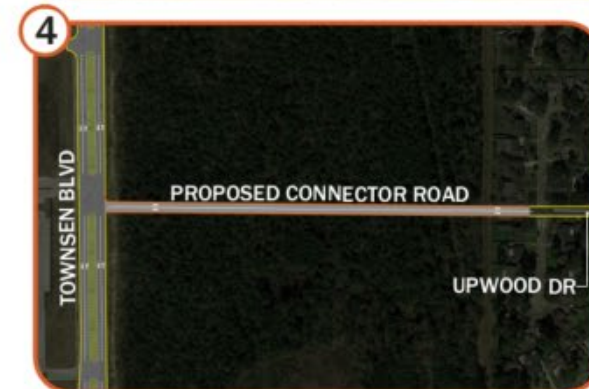
**Travel Time**

8% reduction in travel time

\$2.2 million/year

## Potential Improvements

1. Consolidate driveways
2. Improve side street approaches
3. Innovative intersection/interchange concepts
4. Improve network connectivity
5. Provide network improvements that benefit FM 1960





## COST OF SHORT-RANGE IMPROVEMENTS

Improvements	Quantity	Unit	TxDOT	City of Houston	City of Humble	Harris County	Subtotal	Total
Install Sidewalk	5.0	Miles	\$1,177,645	-	-	-	\$1,177,645	<b>\$36,361,942</b>
Provide Raised Median	9.5	Miles	\$6,224,474	-	\$22,518	-	\$6,246,992	
Perform Drainage Enhancements *	36	EA	\$10,796,142	-	\$1,534	\$4,294	\$10,801,970	
Construct Additional Pavement	27	EA	\$4,316,618	-	\$576,909	\$541,755	\$5,435,282	
Provide Pavement Marking for Vehicles and Bicyclists (E.g. Bike Buffer and Bike Lane Marking)	11	Miles	\$1,503,275	\$50,000	\$12,343	\$10,601	\$1,576,219	
Provide Intelligent Transportation Systems (E.g. Dynamic Message Signs, Bluetooth Sensors, Radars, Preemption Devices, CCTV Cameras)	1	Lump Sum	\$6,962,915	-	-	-	\$6,962,915	
Install Lighting	1	Lump Sum	\$3,860,920	-	-	-	\$3,860,920	
Perform Signal Timing Optimization	27	EA	\$300,000	-	-	-	\$300,000	
<b>Subtotal</b>			<b>\$35,141,989</b>	<b>\$50,000</b>	<b>\$613,304</b>	<b>\$556,649</b>		

**NOTE:** \* Drainage enhancements will be necessary due to construction of additional pavement



## COST OF MEDIUM/LONG -RANGE IMPROVEMENTS

Improvements	Quantity	Unit	TxDOT	City of Houston	City of Humble	Harris County	Subtotal	Total
Construct Deceleration Lanes along I-69 Southbound Frontage Road	1	Lump Sum	\$215,805	-	-	-	\$215,805	<b>\$52,425,445</b>
Construct an Echelon Interchange at FM 1960 and I-69	1	Lump Sum	\$40,761,633	-	-	-	\$40,761,633	
Construct a Quadrant Intersection at FM 1960 and Lee Rd	1	Lump Sum	-	\$6,232,075	-	-	\$6,232,075	
Construct a Connector Roadway between Townsen Blvd and Upwood Dr	1	Lump Sum	-	-	\$3,378,136	-	\$3,378,136	
Construct a Box Diamond at BF 1960A at I-69	1	Lump Sum	\$1,837,796	-	-	-	\$1,837,796	
<b>Subtotal</b>			<b>\$42,815,234</b>	<b>\$6,232,075</b>	<b>\$3,378,136</b>	<b>\$0</b>		

## By Mail

TxDOT Houston District  
Public Information Office  
7600 Washington Avenue  
Houston, TX 77007

## By Phone

(713) 802-5077

## By Email

[fm1960-accessmanagement@txdot.gov](mailto:fm1960-accessmanagement@txdot.gov)

## Comment Card

1. Visit [www.txdot.gov](http://www.txdot.gov),
2. Search FM 1960 Access
3. Download and fill out the comment card, and mail or email it to us.

Comments must include the project numbers (1685-03-104; 1685-02-052) and be postmarked or submitted electronically by Tuesday, September 8, 2020.

## We Need Your Help!

*Take the online survey here  
and then share with others*



*Online survey is available on the  
FM 1960 project webpage at [www.txdot.gov](http://www.txdot.gov)  
and Search: FM 1960 Access Management*

## Contact Us

### Public Information Office

 FM 1960 Access Management Study  
7600 Washington Avenue  
Houston, TX 77007

 713-802-5077

 [fm1960-accessmanagement@txdot.gov](mailto:fm1960-accessmanagement@txdot.gov)

*You can also scan this Quick  
Response (QR) code with your  
phone/tablet to access*

