



Virtual Public Meeting

Seminole Relief Route

Gaines County, Texas

CSJ: 0228-02-049

Thursday, July 15, 2021

Welcome to the second Texas Department of Transportation virtual public meeting presentation for the Seminole Relief Route project. TxDOT is providing an in-person option for individuals who would like to participate in person instead of online. In-person attendees will be able to view the same presentation delivered in the online public meeting which will be playing on a screen, review hard copies of project materials, ask questions of TxDOT staff from a socially distanced approach, and leave written comments. The in-person option is being held today, July 15, 2021 from 5:30 p.m. to 7:30 p.m. at the Seminole Community Center, 801 N. Main St., Seminole, TX 79360.

TxDOT is proposing to improve safety and mobility through the city of Seminole.

Seminole is a major hub located in the Permian Basin and along a vital transportation corridor that provides connectivity and access to the area's energy sector. This region also has a large agriculture industry that contributes to the traffic traveling through Seminole. Due to the amount of semi-truck traffic through the city, the roadway width and congestion at the US 62/385/180 intersection is currently an issue. Therefore, TxDOT is conducting additional public involvement to receive public input on how to address the downtown congestion at the US 62/385/180 intersection.

Virtual Public Meeting - Welcome



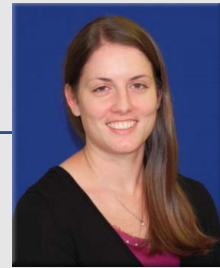
US 62/385/180 Intersection



Seminole Relief Route Survey



US 62/385 (Main St.)



Kylan Francis, P.E.
Director TP&D

TxDOT would like to welcome you and thank you for watching this virtual public meeting presentation that is being shared with the public today, Thursday, July 15, 2021. Kylan Francis is the director of transportation planning and development (TP&D) for the TxDOT Lubbock District and is the primary contact for this project.

A survey is available online for you to give your opinion on which option you think would work best for Seminole. Visit [TxDOT.gov](https://www.txdot.gov) and keyword search “Seminole Relief Route” to take the survey.

TxDOT encourages you to review the materials posted on the virtual public meeting web page and provide written comments. Comments must be received or postmarked by Friday, July 30, 2021 to be included in the virtual public meeting summary report. Ways to submit your written comments will be discussed later in the presentation.

Virtual Public Meeting Agenda



- 1 Welcome
- 2 Project Overview
- 3 Environmental Overview
- 4 Project Schedule and Next Steps
- 5 Public Comment Process
- 6 Adjourn

During this virtual public meeting, we will be covering the following areas:

- Project overview
- Environmental overview
- Project schedule and next steps
- The public comment process – and this will be a little different than our in-person public meetings.....more information on that later – and then
- Adjournment

National Environmental Policy Act (NEPA)

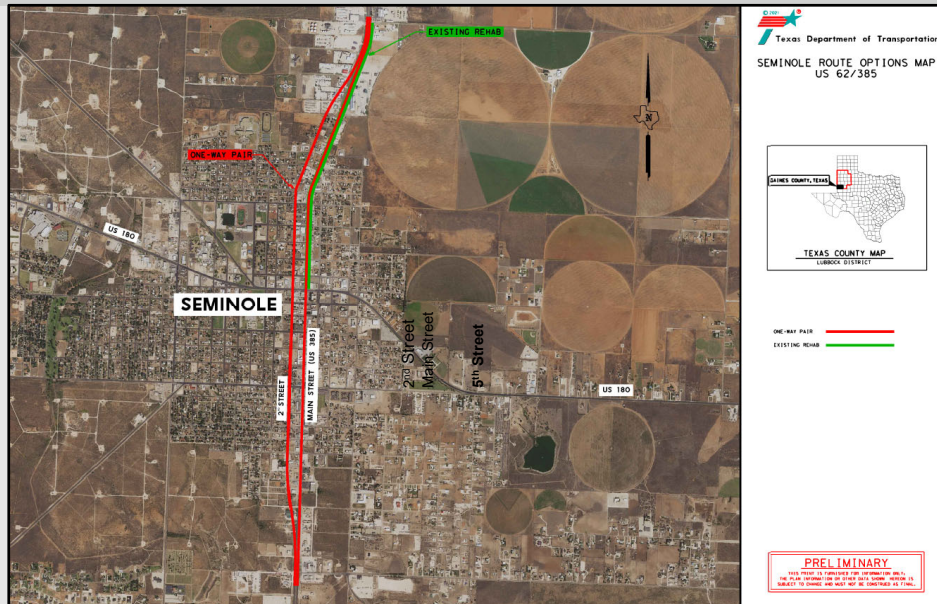


The environmental review, consultation, and other actions required by applicable Federal environmental laws for this project are being, or have been, carried-out by TxDOT pursuant to 23 U.S.C. 327 and a Memorandum of Understanding dated December 9, 2019, and executed by FHWA and TxDOT

Prior to December 16, 2014 the Federal Highway Administration, otherwise known as FHWA, reviewed and approved documents prepared under the National Environmental Policy Act, known as NEPA. However on December 16, 2014, the Texas Department of Transportation assumed responsibility from the FHWA for reviewing and approving certain assigned NEPA environmental documents. This memorandum of understanding was renewed on December 9, 2019. This review and approval process applies to this proposed project.

This virtual public meeting, presented by TxDOT, is being provided to share information and to encourage comments from the public regarding the proposed Seminole Relief Route. Notices for this meeting were published on the TxDOT website on Friday, June 25, 2021, and in the Seminole Sentinel on Sunday, June 27, 2021. The notice was also mailed to local elected public officials. Additional outreach methods for this virtual public meeting included local media and social media.

Seminole Relief Route Location Map



Virtual Public Meeting – Seminole Relief Route

July 15, 2021

TxDOT, the city of Seminole, and Gaines County have been studying the different options available for relieving the congestion through Seminole. This study is focused on the need for a route that semi-trucks could utilize to safely and efficiently move through Seminole. The study is analyzing the benefits of utilizing existing roadway as well as adding new routes to maximize the movement of traffic while minimizing the adverse impacts on the city. The existing roadways were evaluated, funding options were explored and all alternatives were considered, including the option to defer the project.

- The One-way Pair Option consists of converting the existing US 62/385 roadway (Main Street) through Seminole into a three-lane, one-way roadway (northbound), and converting the existing 2nd Street into the other three-lane, one-way roadway (southbound). This option adds capacity and easier turning movements for semi-trucks.
- Option 2 (5th Street) that was presented at the first public meeting has been removed from the planning process.
- The Existing Rehab Option (also known as the No-Build Option) would not change traffic direction, but would rebuild the existing roadway which would include improvements to the pavement, sidewalks and lighting.

You can view the options in more detail on the TxDOT website.

Why is the Project Needed?



Need for the Proposed Project

- Commercial/Agricultural vehicles generate large volume of truck traffic within the city
- Delays at traffic signals due to difficulty turning at US 62/385/180 intersection
- Need to improve safety within the city of Seminole

Purpose of the Proposed Project

- Improve safety and efficiency of travel through Seminole
- Improve turning movements for truck traffic
- Reduce traffic congestion at the US 62/385/180 intersection

Purpose of the Public Meeting

- To inform the public of the status of the project
- To present proposed options and determine the potential to affect lives and property
- To develop a record of public views and opinions to accompany recommendations for the final project

Why is this project needed?

-The need for the proposed project is due to a large volume of commercial and agricultural vehicles traveling through the city. This creates delays for traffic turning at the US 62/385/180 intersection.

-There is a need to improve safety along this segment of US 62/385/180.

The purpose of the proposed project is:

-To improve safety and efficiency of travel through Seminole,

-Improve turning movements, and

-Reduce traffic congestion on US 62/385/180.

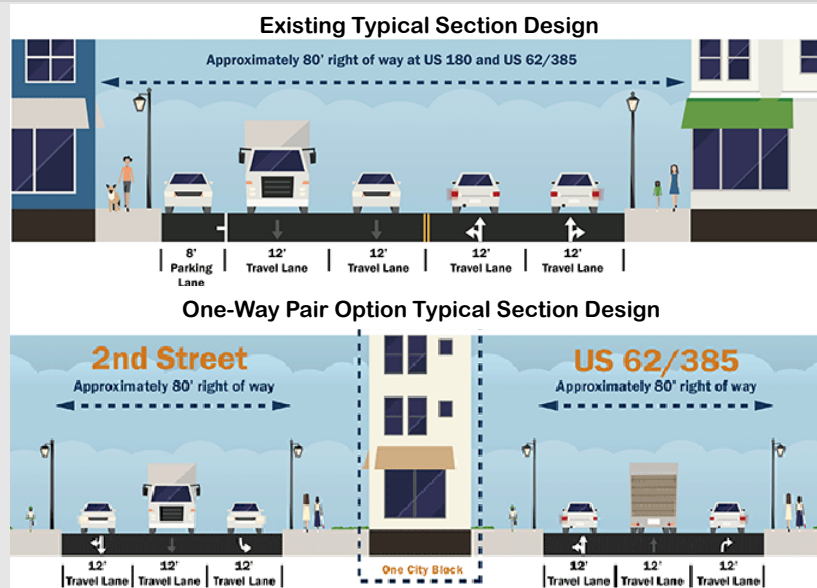
The purpose of the public meeting is:

-To inform the public of the status of planning on the project and present TxDOT's recommendations based on studies performed to date,

-To present a roadway design so the public can determine the project's potential to affect their lives and property, and

-To develop a record of public views and participation to accompany recommendations for subsequent decisions.

Seminole Relief Route Typical Sections



These are the typical sections for the Seminole Relief Route study. The existing US 62/385 and 2nd Street right of way is 80-foot-wide.

The One-way Pair Option consists of converting the existing US 62/385 (Main Street) into a three-lane, one-way roadway (northbound), and converting the existing 2nd Street into the other three-lane, one-way roadway (southbound). This option adds capacity and easier turning movements for semi-trucks.

For the Existing Rehab Option, the 80-foot right of way width would remain the same as shown in the “Existing Typical Section Design”. TxDOT would rebuild the existing roadway which would include improvements to the pavement, sidewalks and lighting.

One-way Pair Option: US 62/385 (Main Street) and 2nd Street



Virtual Public Meeting – Seminole Relief Route

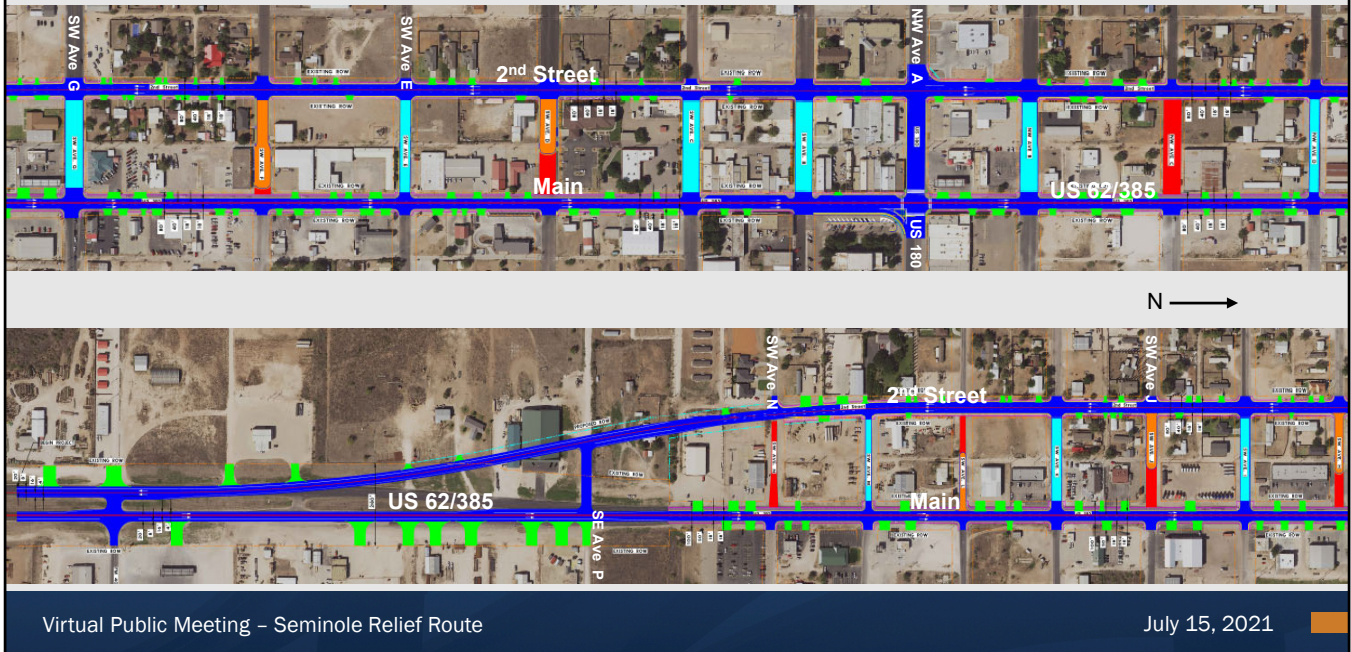
July 15, 2021

These maps show the project location for the One-way Pair Option. The top map shows the northern portion of the project at the tie-in from US 62/385 (Main) to 2nd Street.

As you have a chance to review the preliminary design, the cross-streets in turquoise will remain open to through traffic. The cross-streets in red will be closed to through traffic. The cross-streets in red and orange will be closed to through traffic, but will be partially open to provide access to adjacent businesses.

You can view the design in more detail on the TxDOT meeting web page.

One-way Pair Option: US 62/385 (Main Street) and 2nd Street



Virtual Public Meeting – Seminole Relief Route

July 15, 2021

These maps show the project progression to the south. The bottom map shows the southern portion of the project at the tie-in from 2nd Street back to US 62/385 (Main).

As with the previous maps, the cross-streets in turquoise will remain open to through traffic. The cross-streets in red will be closed to through traffic. The cross-streets in red and orange will be closed to through traffic, but will be partially open to provide access to adjacent businesses.

You can view the design in more detail on the TxDOT meeting web page.



How to review the preliminary design information

1. Click on the PDF file to view the detailed preliminary design posted on this public meeting website



2. Download Google Earth and then click on the KMZ file to view the detailed preliminary design posted on this public meeting website



Seminole Relief Route
Preliminary Design

These files can be viewed and/or printed depending on your preference.

Reviewing the preliminary design can be done in a variety of ways.

First, you will be able to click on the schematic PDF that contains the detailed preliminary design.

Secondly, you can download Google Earth and the KMZ file to view the detailed preliminary design.

These files can be viewed and/or printed depending on your preference.

Estimated Project Schedule



- Second Public Meeting.....July 2021
- Design and Environmental2021-2023
- Right-of-Way Acquisition.....2023-2025
- Begin Construction.....Summer 2025
- Estimated Construction Duration.....24-36 months
- Estimated Construction Cost
 - One-Way Pair Option.....\$44 million
 - Existing Rehab Option.....\$20 million

Now, let's talk about the schedule. This is the project schedule for the major milestones. Tonight is the second public meeting. The Design and Environmental are anticipated to be complete during 2021 to 2023. After the design and environmental processes are complete, TxDOT will start purchasing the property required to build the preferred option.

Construction is currently scheduled to begin in the summer of 2025. However, if the right-of-way acquisition process takes less time than anticipated, construction could begin earlier.

Construction is anticipated to take 24 to 36 months depending on the option chosen.

The estimated construction cost for the One-way Pair Option is approximately \$44 million, and the Existing Rehab Option is approximately \$20 million.

Environmental Process



- Environmental Documentation is being prepared in accordance with the National Environmental Policy Act (NEPA).



- The environmental documentation identifies social, economic, and environmental effects of the proposed project.



- Includes an evaluation of the following:
 - Biological Resources
 - Cultural Resources
 - Hazardous Materials
 - Historical Resources
 - Traffic Noise
 - Community Impacts

The environmental review, consultation, and other actions required by applicable Federal environmental laws for this project are being, or have been, carried-out by TxDOT pursuant to 23 U.S.C. 327 and a Memorandum of Understanding dated December 9, 2019, and executed by FHWA and TxDOT.

The environmental studies being conducted for this project comply with the National Environmental Policy Act. In addition, the environmental review, consultation, and other actions required by applicable Federal environmental laws for this project are being, or have been, carried out by TxDOT pursuant to 23 United States Code 327 and the Memorandum of Understanding dated December 9, 2019, and executed by the Federal Highway Administration and TxDOT.

The environmental evaluation of potential impacts by the proposed project to the natural and human environment include:

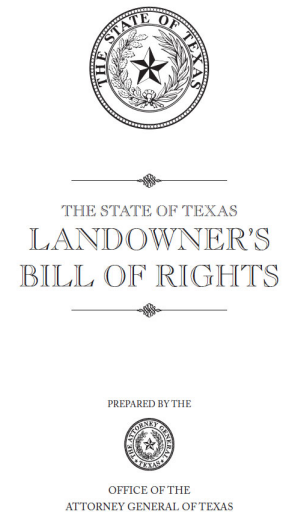
- Biological Resources
- Cultural Resources
- Hazardous Materials
- Historical Resources
- Traffic Noise
- Community Impacts

Right-of-Way Acquisition Process



Additional right of way is required.

Relocations and displacements are anticipated.



Please visit www.txdot.gov for more information about the Uniform Act, the TxDOT Right-of-Way Acquisition Process, and the State of Texas Landowner's Bill of Rights

The Seminole Relief Route project will require additional right of way. Relocations or displacements are anticipated.

It is also important that you know that you can help make this project a success and how this project might impact you and the rights you have as a property owner in Texas. We invite you to review more information about the Uniform Act, the TxDOT Right-of-Way Acquisition Process and the State of Texas Landowner's Bill of Rights brochures. A link to view or download this brochures has been provided on this public meeting website at www.txdot.gov.

How to Submit Your Written Comments



Mail:
Kylan Francis, P.E.
Director TP&D
135 Slaton Rd.
Lubbock, TX 79404



Email:
kylan.francis@txdot.gov



Seminole Relief Route Survey



Online:
Visit txdot.gov - Keyword Search: "Seminole Relief Route"

Comments must be received or postmarked on or before Friday, July 30, 2021 to be included in the public meeting summary report.

TxDOT encourages you to review the materials posted on the virtual public meeting web page and provide written comments. Comments must be received or postmarked by Friday, July 30, 2021 to be included in the virtual public meeting summary report. You may submit written comments in the following ways:

By mail to:
Kylan Francis, P.E.
Director TP&D
135 Slaton Rd.
Lubbock, TX 79404

By Email to kylan.francis@txdot.gov

Or online by visiting www.txdot.gov and keyword search "Seminole Relief Route"

Again and most importantly, please be sure to submit your written comment no later than Friday, July 30, 2021, which is 15 days after the July 15, 2021 meeting date. The responses to your comments submitted during this time will be included in the virtual public meeting summary report.

Also, remember to check out the survey that is available online for you to give your opinion on which option you think would work best for Seminole. Visit TxDOT.gov and keyword search "Seminole Relief Route" to take the survey.



PROJECT CONTACTS:

Kylan Francis, P.E.

Director TP&D

135 Slaton Rd.

Lubbock, TX 79404-5201

(806) 748-4490

kylan.francis@txdot.gov

Julia Perschnick, P.E.

District Advanced Planning Engineer

135 Slaton Rd.

Lubbock, TX 79404-5201

(806) 748-4518

Julia.Perschnick@txdot.gov

Call or email these project contacts Monday through Friday between 8 a.m. and 5 p.m. with any questions at any time in the project development process.

The environmental review, consultation, and other actions required by applicable Federal environmental laws for this project are being, or have been, carried-out by TxDOT pursuant to 23 U.S.C. 327 and a Memorandum of Understanding dated December 9, 2019, and executed by FHWA and TxDOT.

Please don't hesitate to contact Kylan Francis or Julia Perschnick with any questions about the proposed project. It must be noted that comments on the project must be submitted in writing as previously discussed.

In closing, we want to remind everyone that you can call or email these project contacts Monday through Friday between 8 a.m. and 5 p.m. with any questions at any time in the project development process.

And don't forget to visit the project meeting web page to view additional project information.

This concludes the virtual public meeting presentation. Thank you!