



WELCOME

**Thank You for attending the
I-69 Connector Corridor
Feasibility Study
Technical Work Group (TWG) Meeting**

Please sign in!

The WebEx will begin momentarily

- If you have dialed into the audio, please **mute** your phone, speakers, and headset to prevent feedback.
- If you have dialed in by phone and are listening through your computer speakers, please **mute** your phone.
- Please do not place the call on hold, as all callers will hear the hold tones.



I-69 Connector From I-69C/US 281 to I-69E/US 77

Corridor Feasibility Study

Technical Work Group (TWG) Meeting #1

Safety Briefing – Hurricane Preparedness

NOAA's August 2019 update

- Named Storms: 10 to 17
- Hurricanes: 5 to 9
- Major (Category 3 wind or higher): 2 to 4

Before the storm

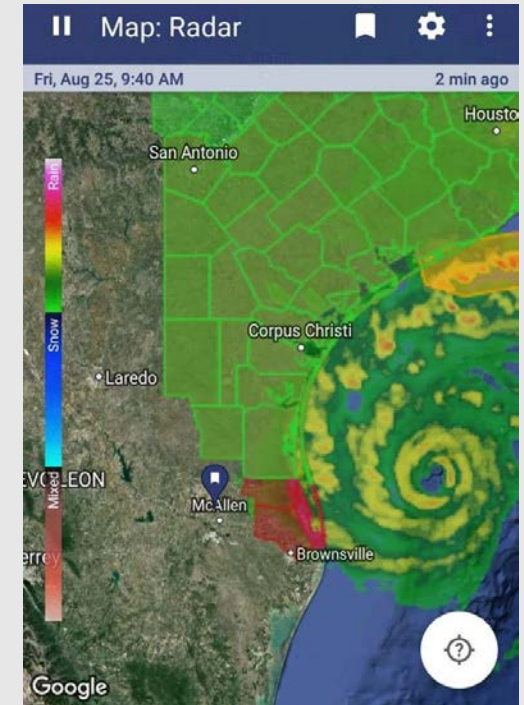
- Develop **Evacuation Plan** and arrangements for seniors and pets
- Check home owners insurance policies for flood damage coverage
- Prepare **Hurricane Emergency Kit** (flashlights, water, food, handcrank radio, batteries, first aid manual can opener, maps, cell phone chargers)

During the Storm

- Stay tuned to local news channels and check local NWS websites
- **Follow local officials instructions**; hunker down or leave immediately if ordered

After the Storm

- Continue to stay tuned to local news channels and check local NWS websites
- (If you evacuated) **return home only when officials say it is safe**
- **Be wary of loose power lines, gas leaks, and structural damage**
- **Avoid driving on flooded roads**



Presentation Outline

1. Introductions
2. Purpose of the TWG Meeting
3. Role of the TWG
4. Study Background
5. Transportation Project Development Process
6. Corridor Planning Overview
7. Brainstorming Exercises
8. Schedule/Next Steps
9. Contact Information
10. TWG Brainstorming Session
11. Closing Remarks



Introductions

- Name
- Organization



Purpose of the TWG Meeting

- Introduce the I-69 Connector Corridor Feasibility Study to the TWG
- Set draft project goals and objectives
- Discuss constraints and gather input
- Learn about stakeholder concerns/issues



Role of the TWG

- Provide input on the study
- Help identify key issues within the study area
 - Planned developments and potential constraints
 - Current transportation issues and future needs
- Prioritize issues and needs
- Assist in developing:
 - Goals and objectives of the study
 - Alternatives for further study



Study Background

■ FM 1925 Needs Assessment

- Conducted from 2013 through 2015
- Evaluated need for improvements and expansion of existing FM 1925 (Monte Cristo Rd) from proposed SH 68 to I-69E (US 77)
- Identified the need for a Super 2 highway (2-lanes with a periodic passing lane) by 2020

2010 Population Density



2035 Population Density




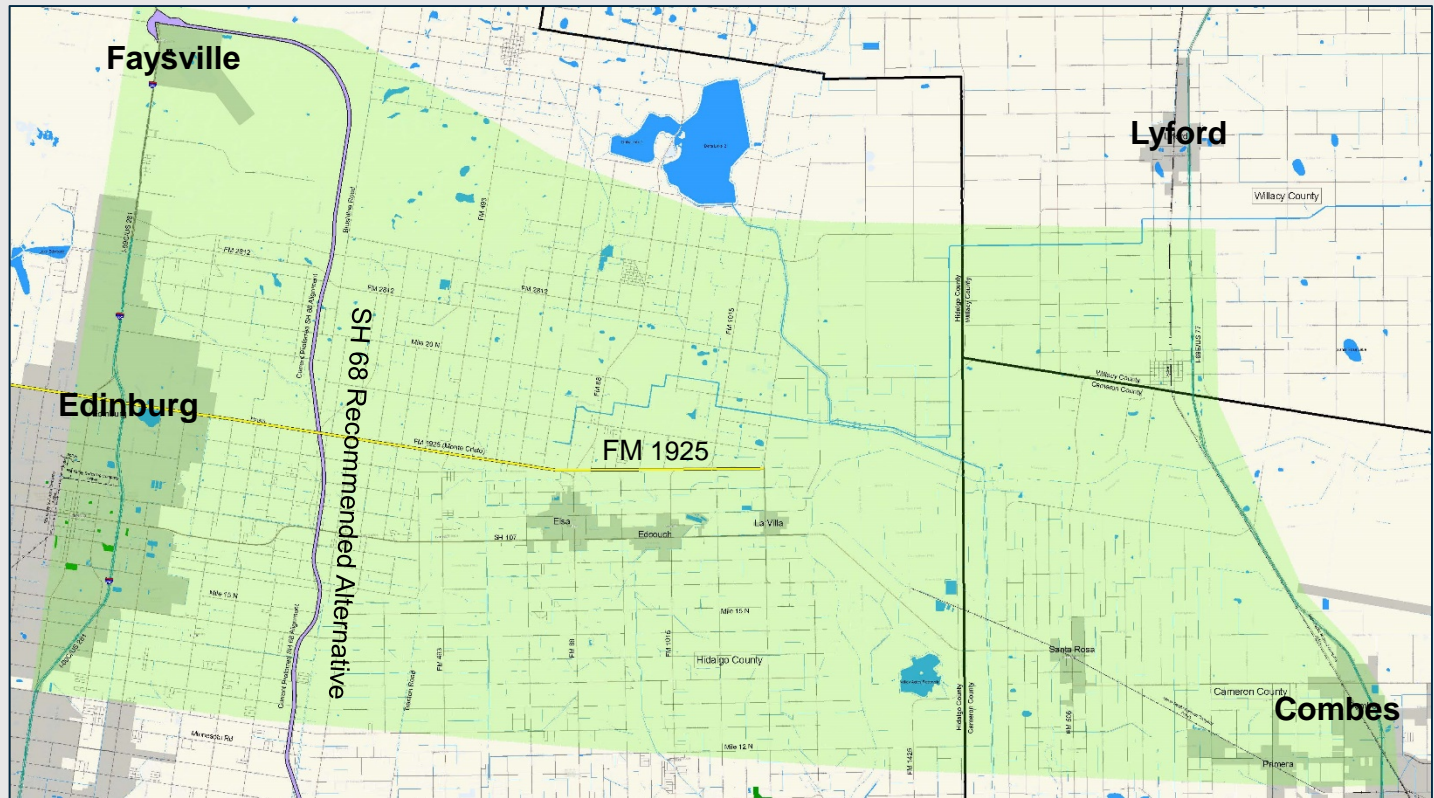
I-69 Connector Study Area

Study Area Limits

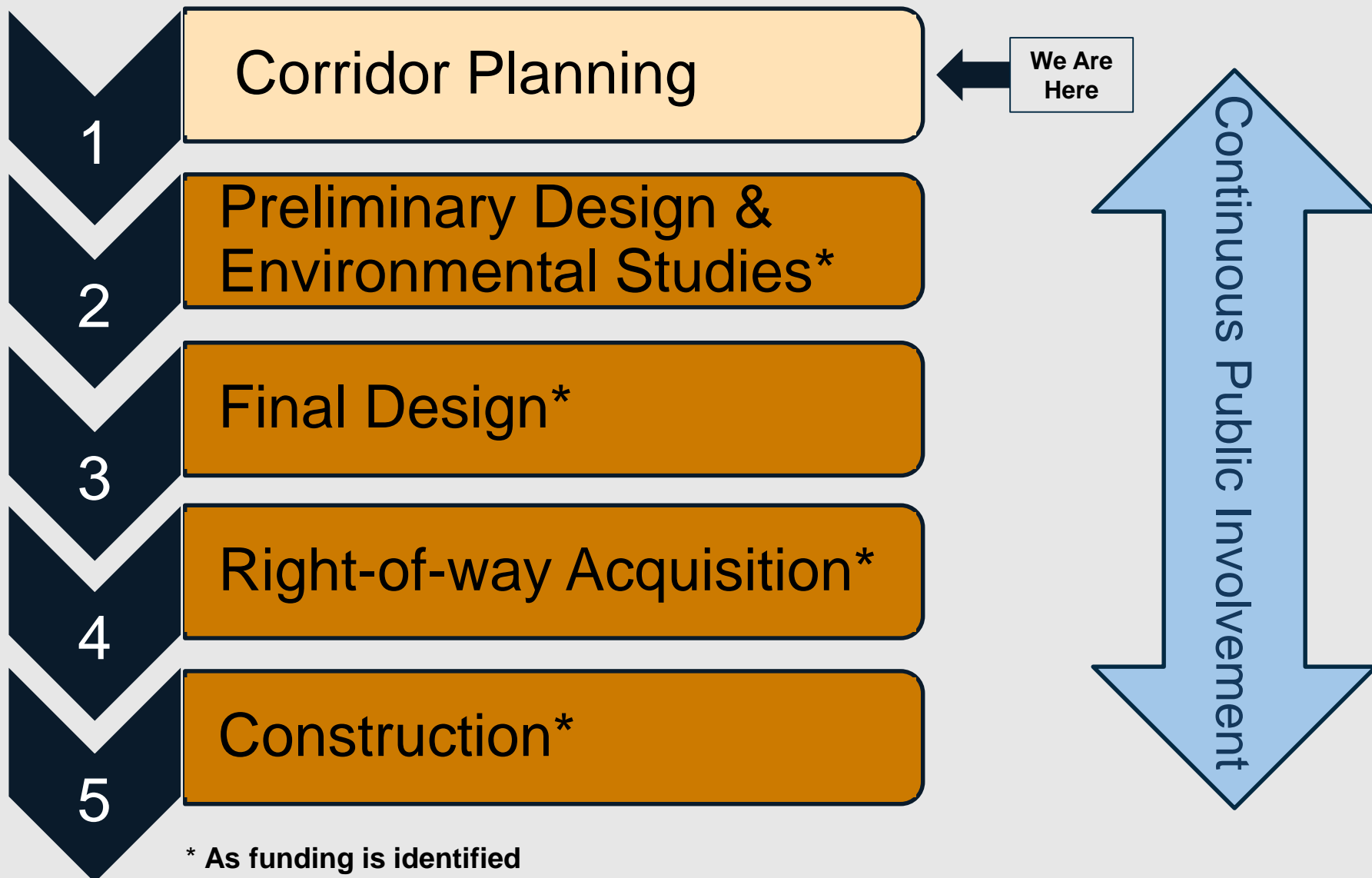
- From I-69C/US 281 to I-69E/US 77
- Counties:
 - Cameron
 - Hidalgo
 - Willacy

Legend:

 Study Area

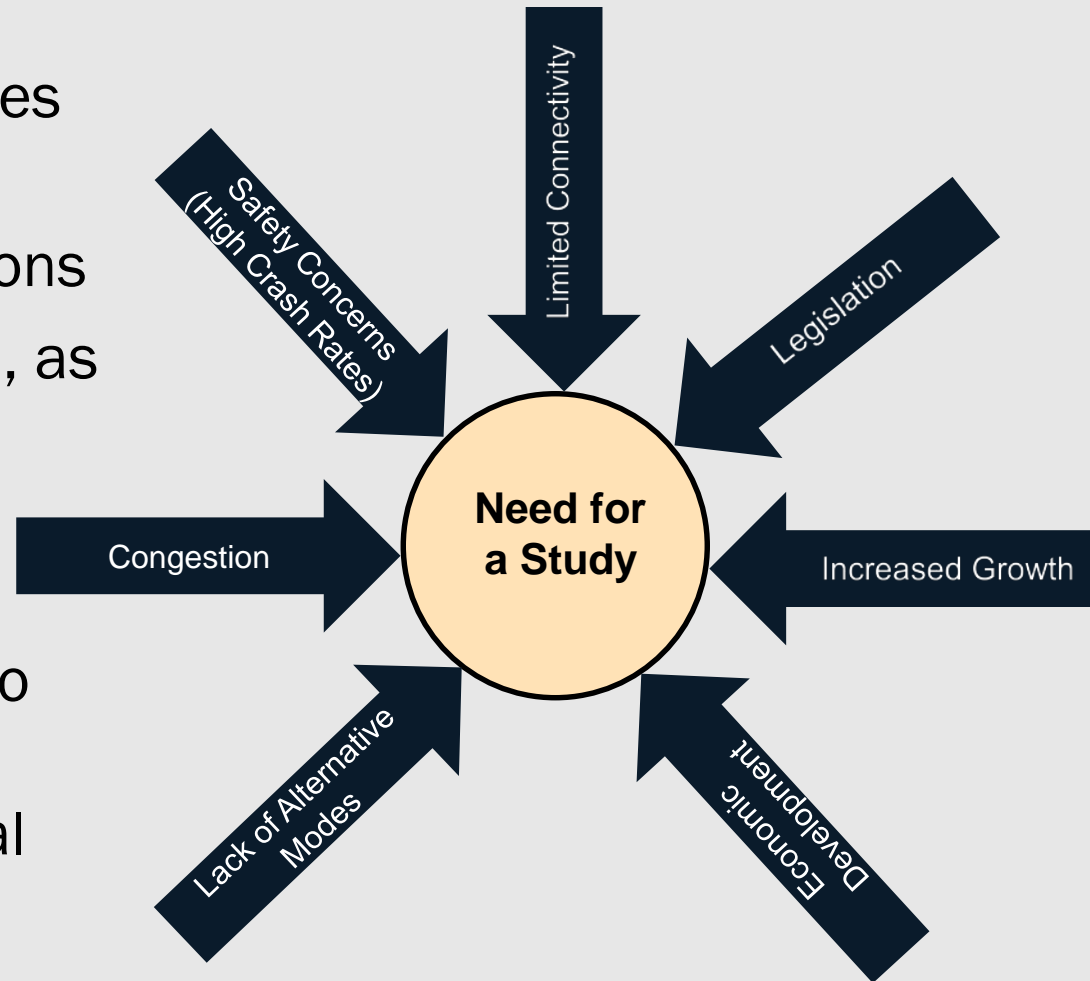


Transportation Project Development Process



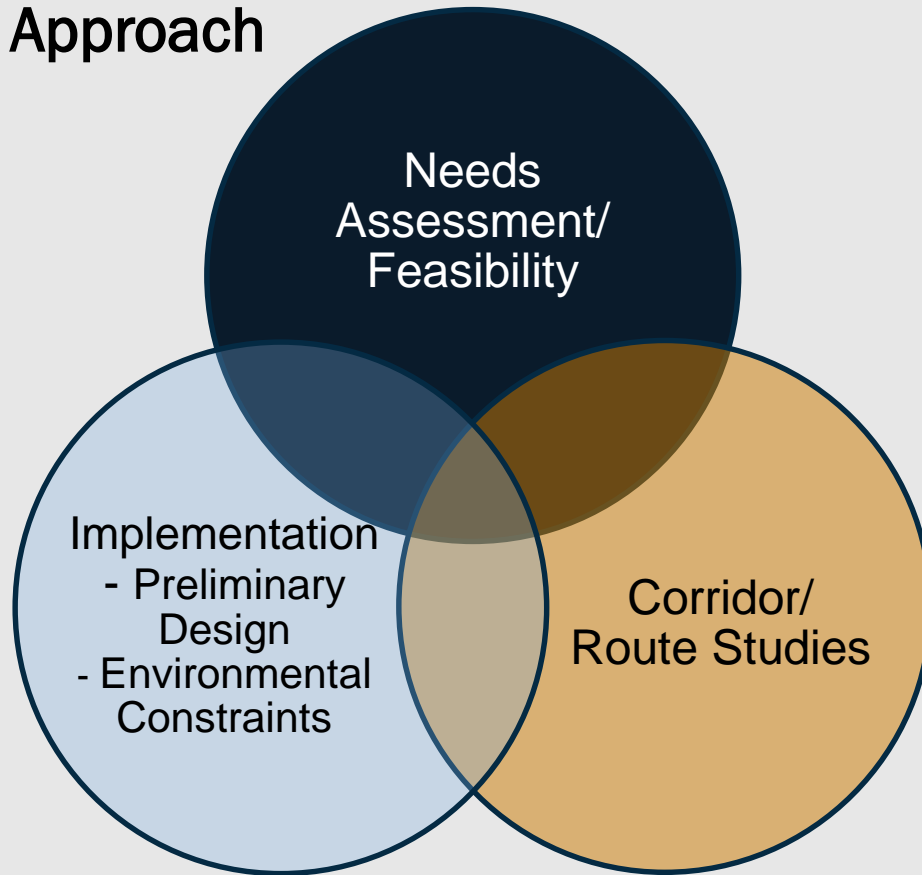
What is Corridor Planning?

- Defines corridor challenges and opportunities
- Evaluates possible solutions
- Provides an overall vision, as well as guidance and coordination on future improvements
- Provides an opportunity to engage local officials, stakeholders, and general public



Corridor Planning Approach

Approach

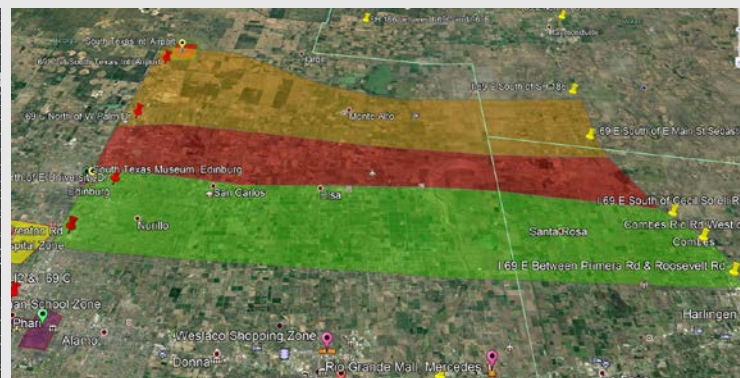


Ultimate Goal

- Is an east-west facility needed within the study area?
- If so, what type of facility is needed and when?
- What is the optimum location for the facility?

Corridor Planning - Traffic Analysis

- Historical traffic volumes
- Major traffic generators
- Origin-Destination (O-D) data analysis
- Collect existing traffic volumes
- Develop 2025 & 2045 daily traffic volumes
- Calculate volume/capacity ratio for existing & year 2045 conditions
- Develop detailed traffic projections for preferred alternative for
 - 2025
 - 2045
 - 2055



Corridor Planning - Stakeholder and Public Input

- Develop goals and objectives
- Identify future developments
- Consider, discuss and identify potential transportation modes
- Identify environmental constraints
- Identify potential corridor alternatives

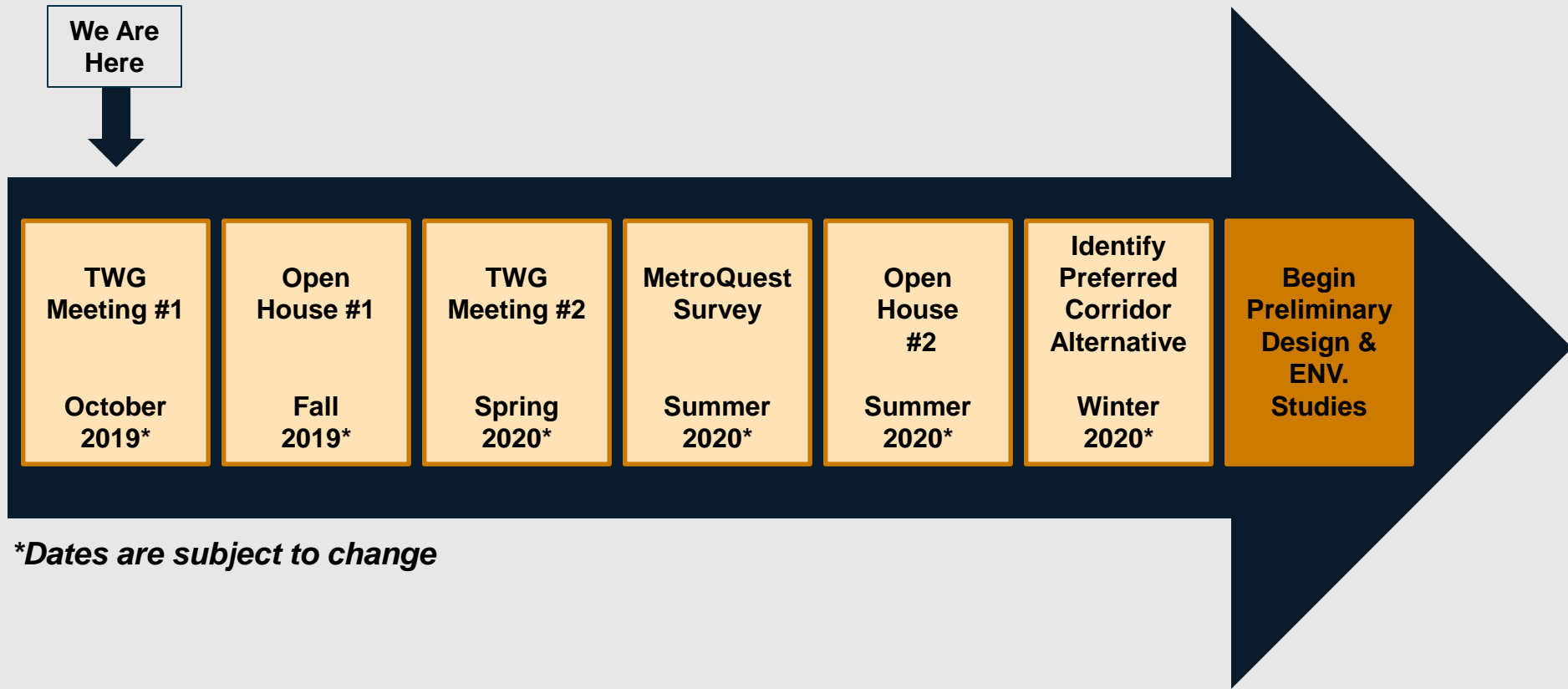


Brainstorming Exercises

- Study Area Constraints (Exercise #1)
 - Identify future developments and potential constraints
- Transportation Challenges (Exercise #2)
 - Discuss challenges/concerns within the study area and determine which are the TWG's priorities
- Materials
 - Study Area Constraints Maps
 - Roadway Network Map
 - Pens and Markers
 - Cell phones
 - Mentimeter App (interactive presentation software)



Corridor Planning Milestones



**Dates are subject to change*

Note: TWG Meetings and Open Houses will be documented as part of the corridor feasibility study development process

Contact Information

- Contact as needed with any questions:

Margil Maldonado, Jr., P.E.
TxDOT Project Manager
(956) 702-6134
margil.maldonado@txdot.gov

Steve Woodruff, P.E.
Consultant Project Manager
Huitt-Zollars, Inc.
(214) 871-3311
swoodruff@Huitt-Zollars.com





TWG Brainstorming Session

Brainstorming Exercise – Study Area Constraints/Opportunities

- Working as a group (at each table):
 - 1) Are there any constraints not shown that should be considered/added?
 - 2) What developments are planned in the foreseeable future within the study area?
 - 3) Where do you anticipate development will occur within the study area?
 - 4) Which constraints would you consider to be no impact items?
 - 5) Are there any resource(s) within the community that is/are important to protect?



Materials: Constraints Maps, Roadway Network Map, Pens and Markers

Brainstorming Exercise – Transportation Challenges

- Working as the TWG:
 - 1) Guided discussion of the challenges and opportunities within the study area
 - 2) TWG uses Mentimeter App (cell phones) to show real time responses and spur discussion
 - Go to www.menti.com
 - Type in the code provided
 - Respond to the questions presented
 - 3) Review and prioritize the issues and concerns



***Materials: Cell phone, Mentimeter App (interactive presentation software)
Constraints Maps, Roadway Network Map***

*Thank You for Your
Time and Participation!*

