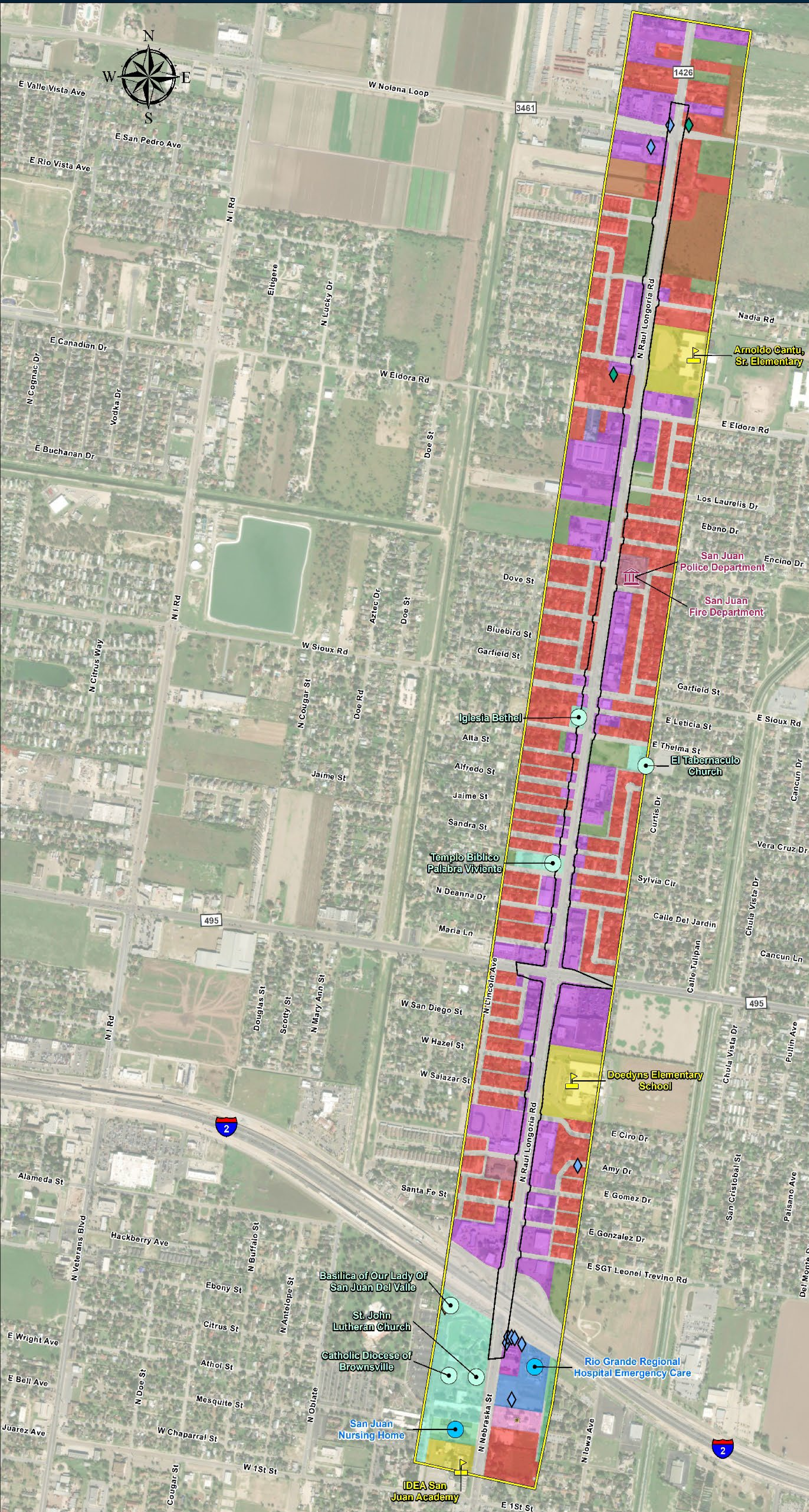


Environmental Constraints



Environmental Constraints

FM 1426
From Nolana Loop to I-2
Hidalgo County, Texas
CSJ: 1429-02-036

- Study Area
- Preferred Alternative
- Educational Facility
- Place of Worship
- Medical Facility
- Public Facility
- Brackish Groundwater Well (TCEQ)
- Groundwater Well (TWDB)
- Monitoring Well (TWDB)

Land Use/Land Cover (ICF)

- Agriculture
- Commercial
- Educational Facility
- Government Facility
- Hospital
- Museum
- Religious Facility
- Residential - Abandoned
- Residential - Multi Family
- Residential - Single Family
- Existing Transportation
- Undeveloped

