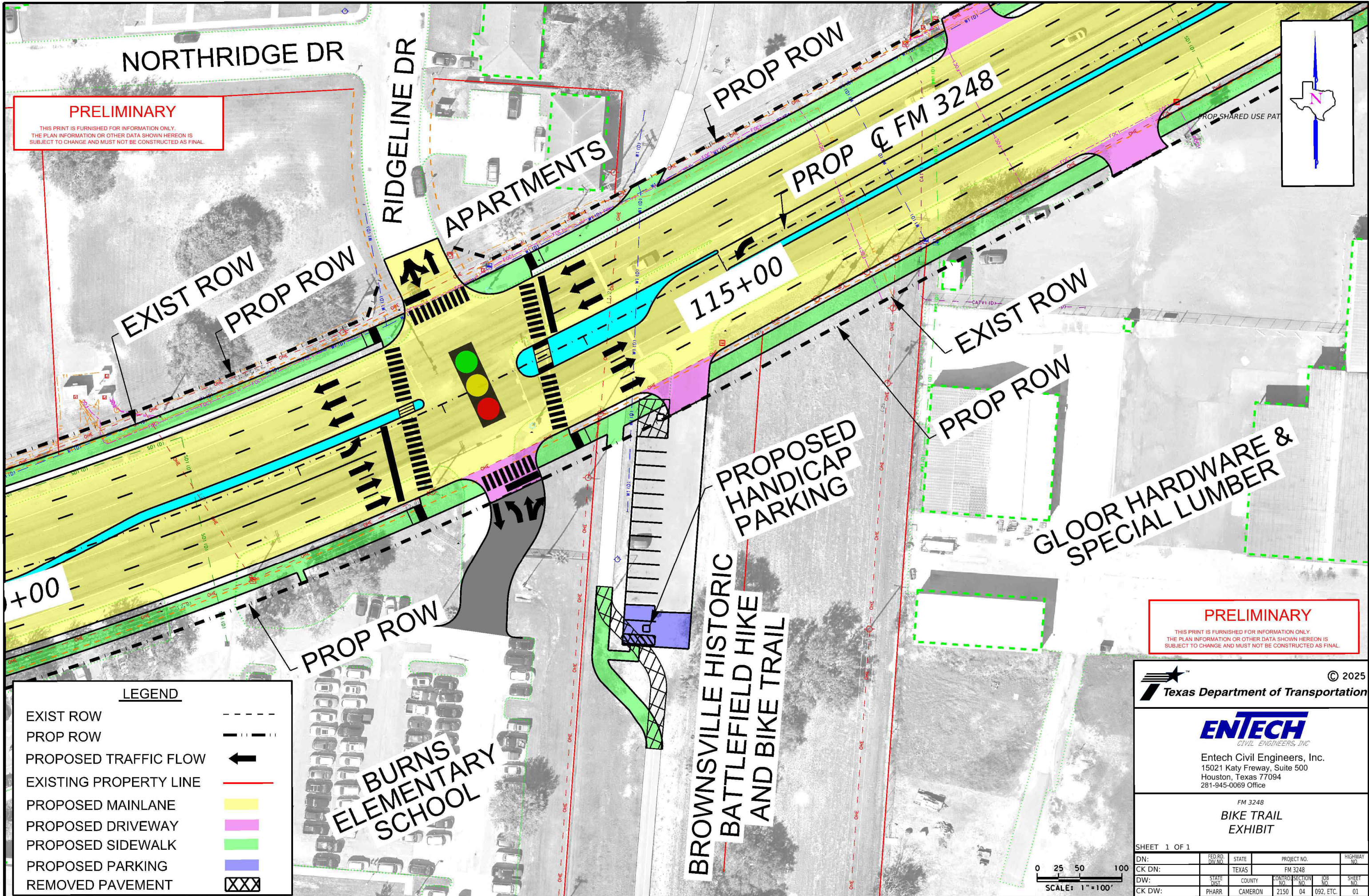
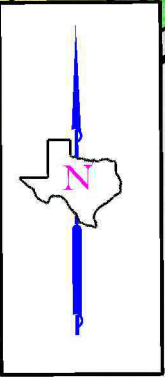


**PRELIMINARY**

THIS PRINT IS FURNISHED FOR INFORMATION ONLY.  
THE PLAN INFORMATION OR OTHER DATA SHOWN HEREON IS  
SUBJECT TO CHANGE AND MUST NOT BE CONSTRUCTED AS FINAL.



EXIST ROW  
PROP ROW

PROP ROW  
PROP FM 3248

EXIST ROW  
PROP ROW

PROPOSED  
HANDICAP  
PARKING

GLOOR HARDWARE &  
SPECIAL LUMBER

PROP ROW

BURNS  
ELEMENTARY  
SCHOOL

BROWNSVILLE HISTORIC  
BATTLEFIELD HIKE  
AND BIKE TRAIL

**PRELIMINARY**

THIS PRINT IS FURNISHED FOR INFORMATION ONLY.  
THE PLAN INFORMATION OR OTHER DATA SHOWN HEREON IS  
SUBJECT TO CHANGE AND MUST NOT BE CONSTRUCTED AS FINAL.

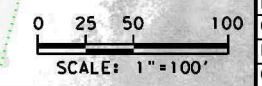


Entech Civil Engineers, Inc.  
15021 Katy Freeway, Suite 500  
Houston, Texas 77094  
281-945-0069 Office

FM 3248  
BIKE TRAIL  
EXHIBIT

SHEET 1 OF 1

DN:	FED. RD. DIV. NO.	STATE	PROJECT NO.	HIGHWAY NO.
CK DN:		TEXAS	FM 3248	
DW:	STATE DIST.	COUNTY	CONTROL SECTION NO.	JOB NO.
CK DW:	PHARR	CAMERON	2150 04	092, ETC.



**LEGEND**

- EXIST ROW
- PROP ROW
- PROPOSED TRAFFIC FLOW
- EXISTING PROPERTY LINE
- PROPOSED MAINLANE
- PROPOSED DRIVEWAY
- PROPOSED SIDEWALK
- PROPOSED PARKING
- REMOVED PAVEMENT