



Welcome Virtual Public Meeting Pre-Recorded Presentation

Interstate 69E Improvement Project
Cameron and Willacy Counties

CSJs: 0327-10-063, 0039-07-249, 0327-08-094,
0039-07-257





National Environmental Policy Act (NEPA) Assignment to the Texas Department of Transportation

The environmental review, consultation, and other actions required by applicable Federal environmental laws for this project are being, or have been, carried-out by TxDOT pursuant to 23 U.S.C. 327 and a Memorandum of Understanding dated December 9, 2019, and executed by the Federal Highway Administration (FHWA) and TxDOT.

Virtual Public Meeting in Response to Public Health Concerns



Given the COVID-19 outbreak, TxDOT changed the in-person public meeting to a virtual format. In addition, TxDOT is providing an in-person option by appointment only:

The virtual public meeting on the TxDOT website provides the same information as the in-person meeting:

- Project information
- Estimated timeline
- Process for submitting comments
- Key contacts

SHARE FACTS ABOUT COVID-19

Know the facts about coronavirus disease 2019 (COVID-19) and help stop the spread of rumors.

FACT 1 Diseases can make anyone sick regardless of their race or ethnicity.

Fear and anxiety about COVID-19 can cause people to avoid or reject others even though they are not at risk for spreading the virus.

FACT 2 For most people, the immediate risk of becoming seriously ill from the virus that causes COVID-19 is thought to be low.

Older adults and people of any age who have serious underlying medical conditions may be at higher risk for more serious complications from COVID-19.

FACT 3 Someone who has completed quarantine or has been released from isolation does not pose a risk of infection to other people.

For up-to-date information, visit CDC's coronavirus disease 2019 web page.

FACT 4 There are simple things you can do to help keep yourself and others healthy.

- Wash your hands often with soap and water for at least 20 seconds, especially after blowing your nose, coughing, or sneezing; going to the bathroom; and before eating or preparing food.
- Avoid touching your eyes, nose, and mouth with unwashed hands.
- Stay home when you are sick.
- Cover your cough or sneeze with a tissue, then throw the tissue in the trash.

FACT 5 You can help stop COVID-19 by knowing the signs and symptoms:

- Fever
- Cough
- Shortness of breath

Seek medical advice if you

- Develop symptoms

AND

- Have been in close contact with a person known to have COVID-19 or if you live in or have recently been in an area with ongoing spread of COVID-19.

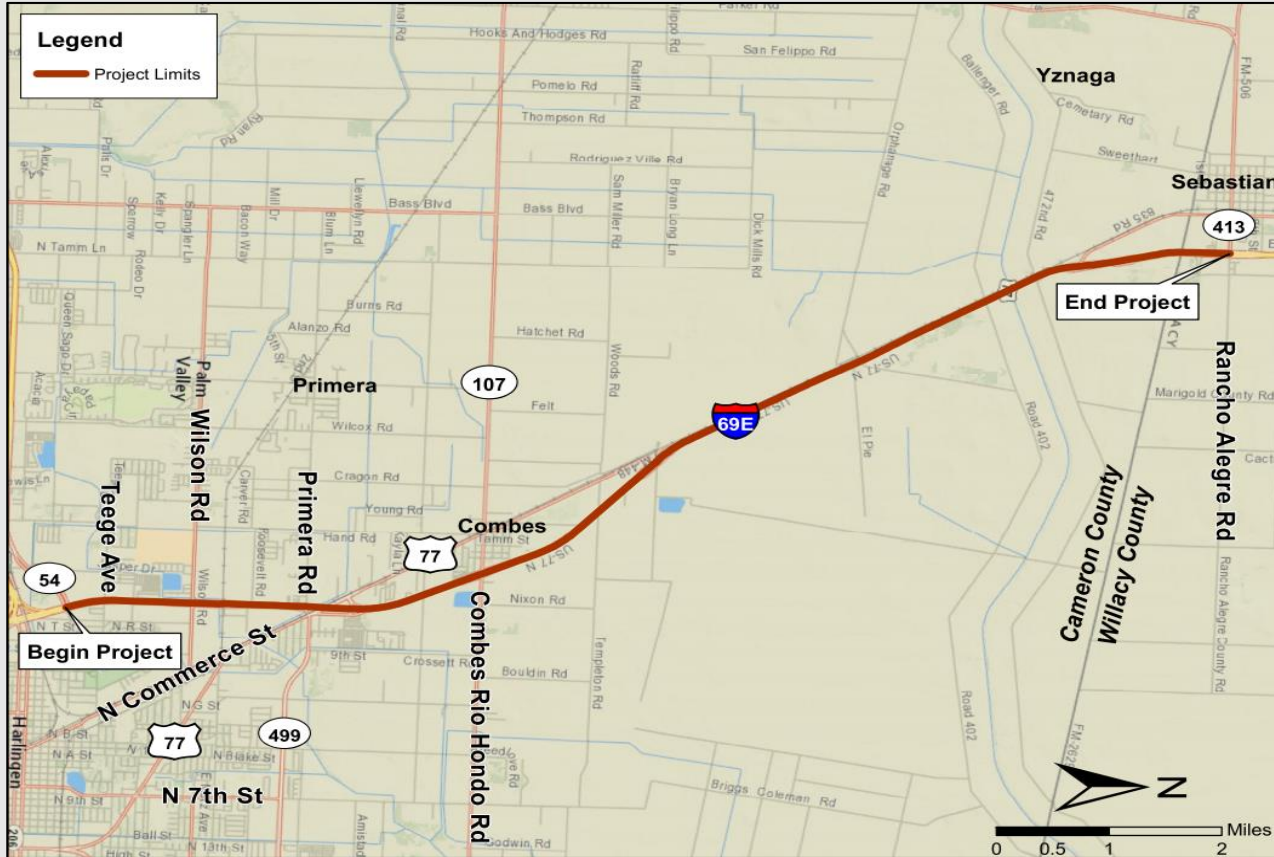
[cdc.gov/COVID-19](https://www.cdc.gov/COVID-19)

Agenda



| | | |
|-----------|--|-------|
| 1 | Project Overview | 5 |
| 2 | Existing Typical Section | 6 |
| 3 | Existing Level-of-Service, Crash Analysis and Safety | 7-10 |
| 4 | Purpose and Need | 11 |
| 5 | Proposed Typical Section | 12-13 |
| 6 | Schematic | 14-16 |
| 7 | Improvements | 17 |
| 8 | Environmental Overview | 18-20 |
| 9 | Right of Way | 21 |
| 10 | Schedule and Cost | 22 |
| 11 | Contacts and Comments | 23-24 |

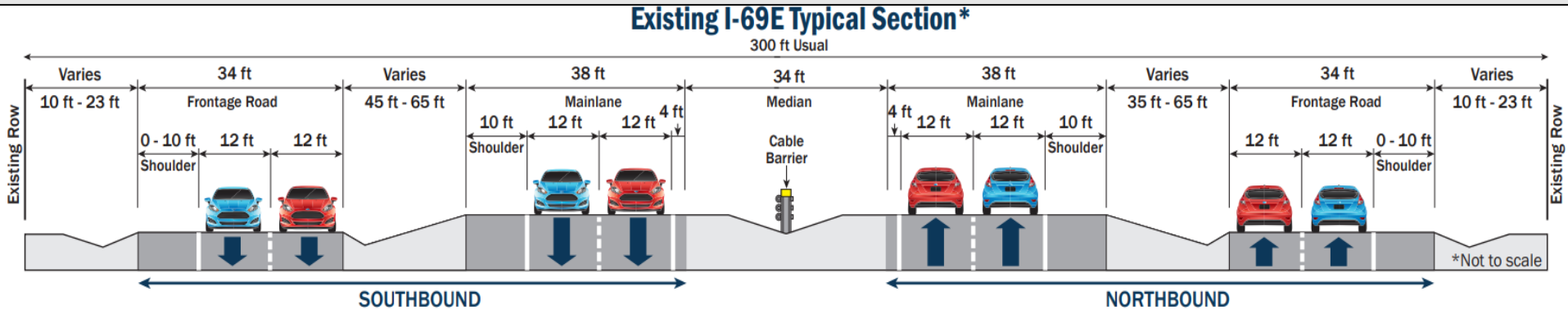
Project Overview



Location: Cameron and Willacy Counties

Limits: From Spur 54 to Spur 413

Length: Approximately 12 Miles

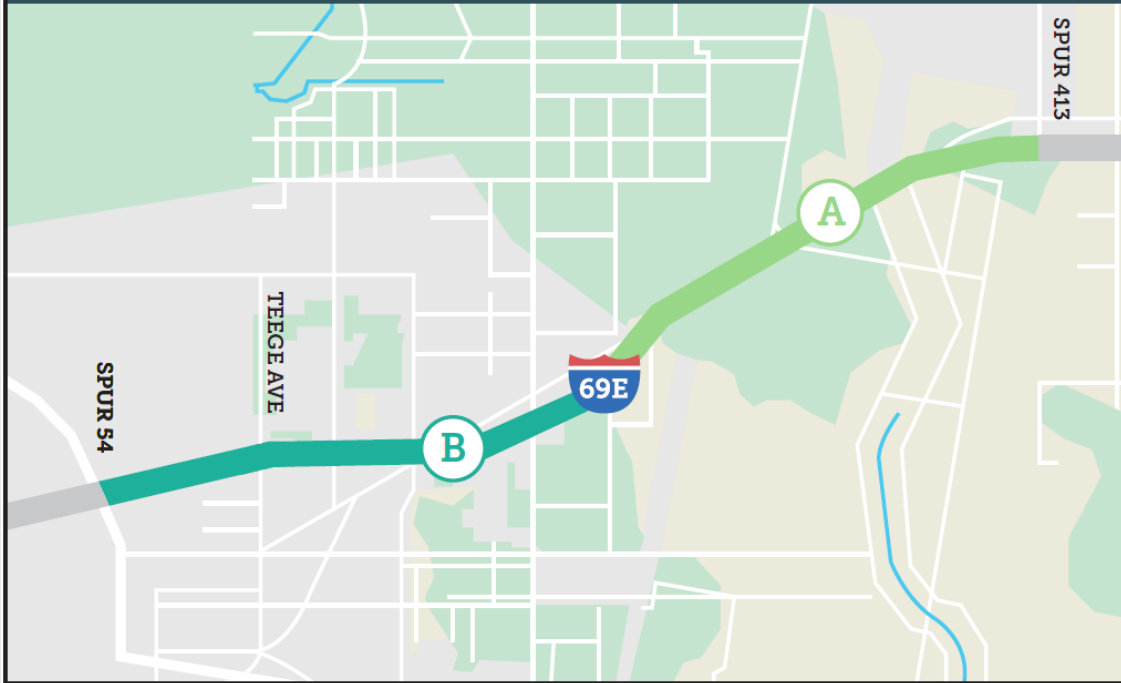


- Divided four-lane highway with 4-foot inside shoulder, two, 12-foot lanes and a 10-foot shoulder in both directions
- One, 34-foot depressed grass median with a cable barrier
- Frontage roads with two, 12-foot lanes and variable shoulder widths

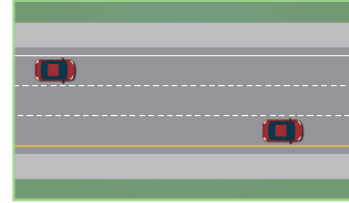
Daily Traffic Volumes and Level of Service (LOS) – OPENING YEAR



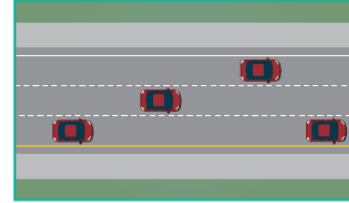
LEVEL OF SERVICE (Opening Year) - 2025



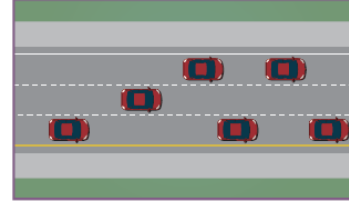
A FREE FLOW TRAFFIC
No Delays



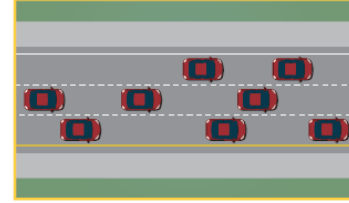
B REASONABLY FREE FLOW
No Delays



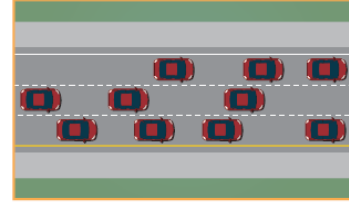
C STABLE FLOW
Minimal Delays



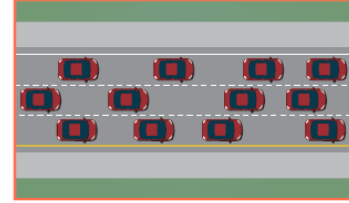
D SPEEDS BEGIN TO DECLINE
Minimal Delays



E TRAFFIC AT CAPACITY
Significant Delays



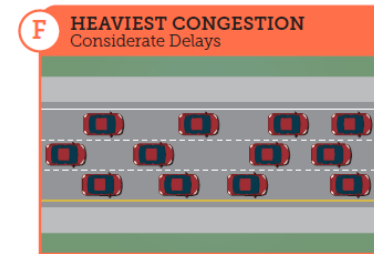
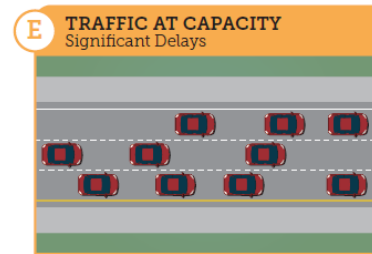
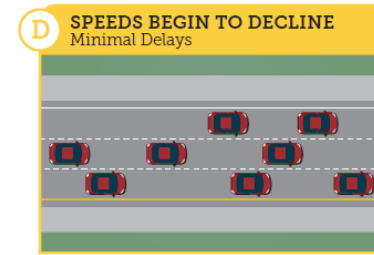
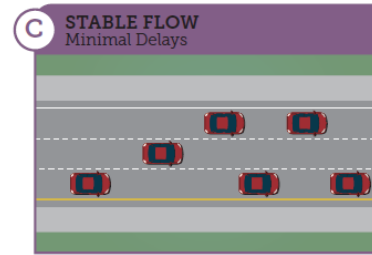
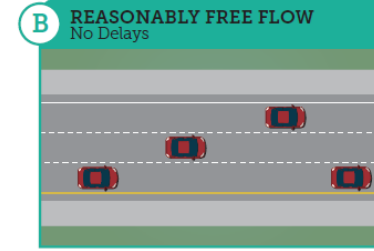
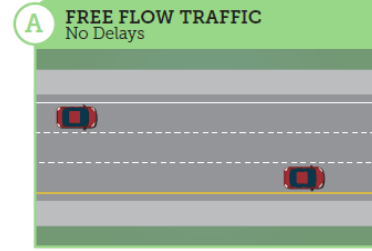
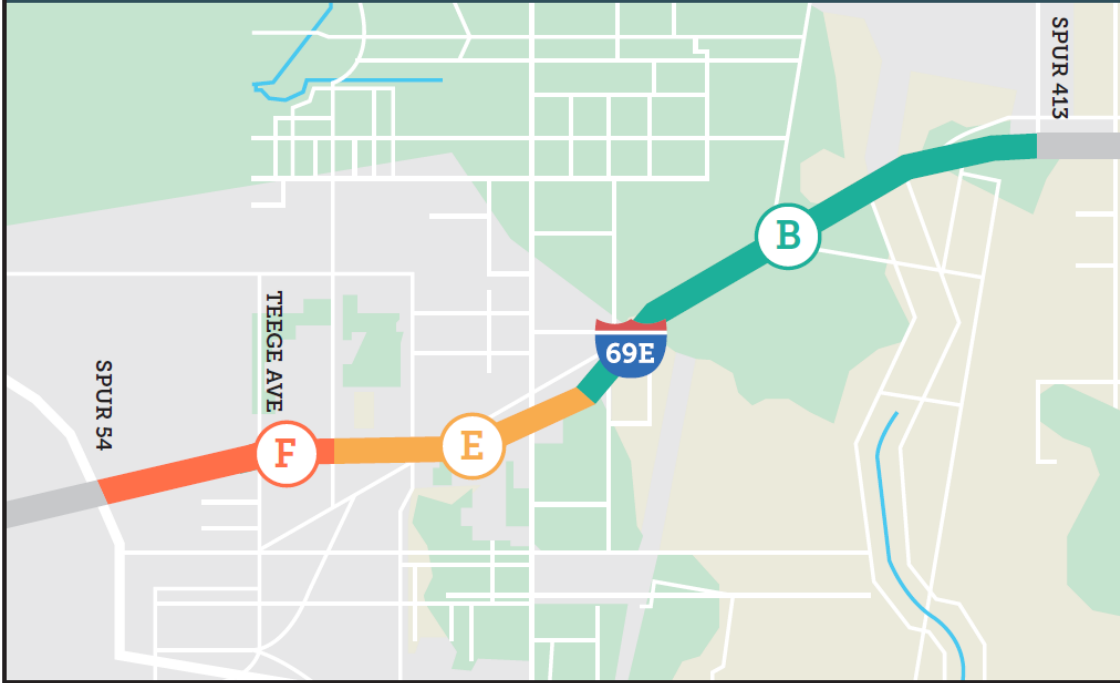
F HEAVIEST CONGESTION
Considerate Delays



Daily Traffic Volumes and Level of Service (LOS) – NO BUILD



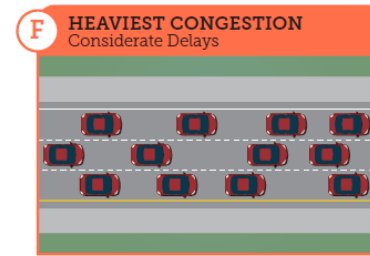
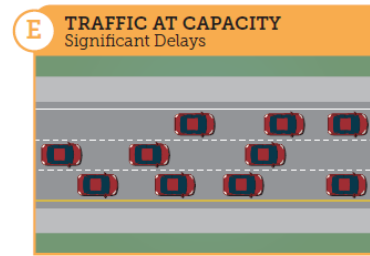
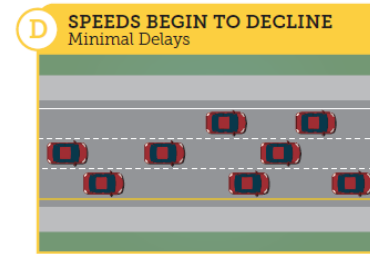
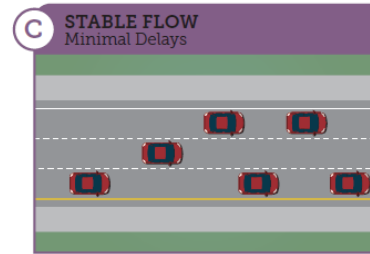
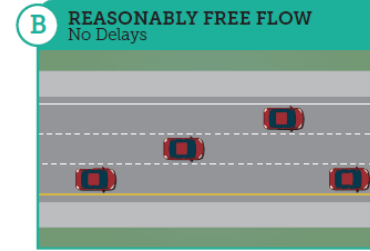
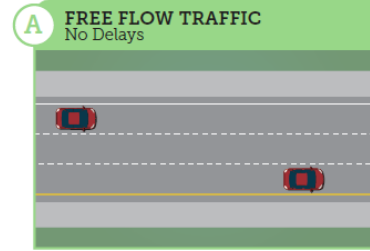
FUTURE LEVEL OF SERVICE (No Build) - PROJECTED 2025



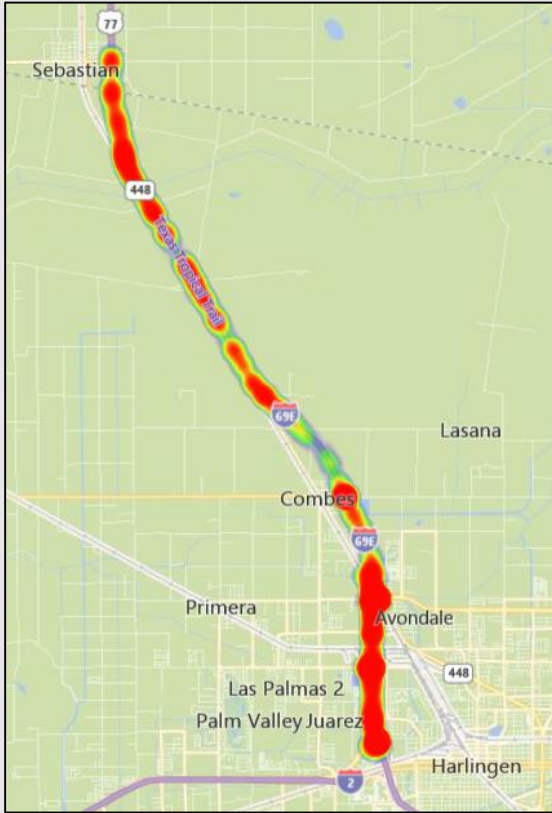
Daily Traffic Volumes and Level of Service (LOS) - BUILD



FUTURE LEVEL OF SERVICE (Build) - PROJECTED 2045

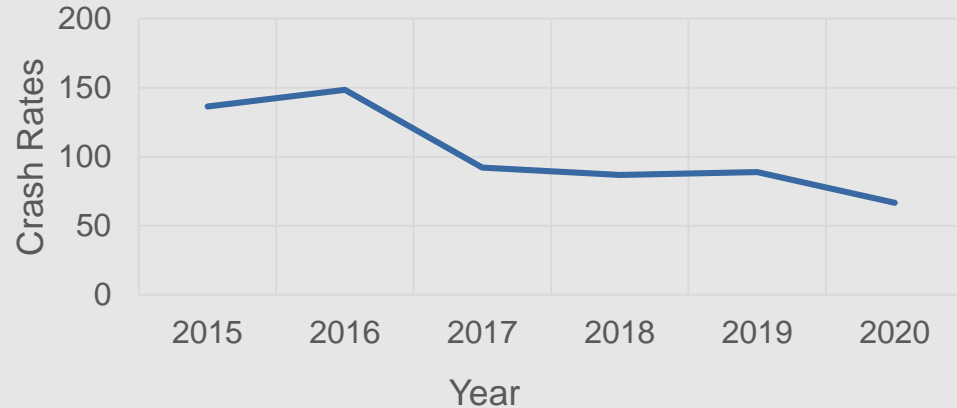


Crash Analysis (2015–2020)



- 44% - crash decrease, from 2015–2020
- 51% - corridor crash rate decrease, from 2015–2020
- Hotspot crash map supports crash rate on access areas of corridor

I-69E Corridor Crash Rate





Project Need:

- Improve mobility by adding capacity
- Improve traffic safety

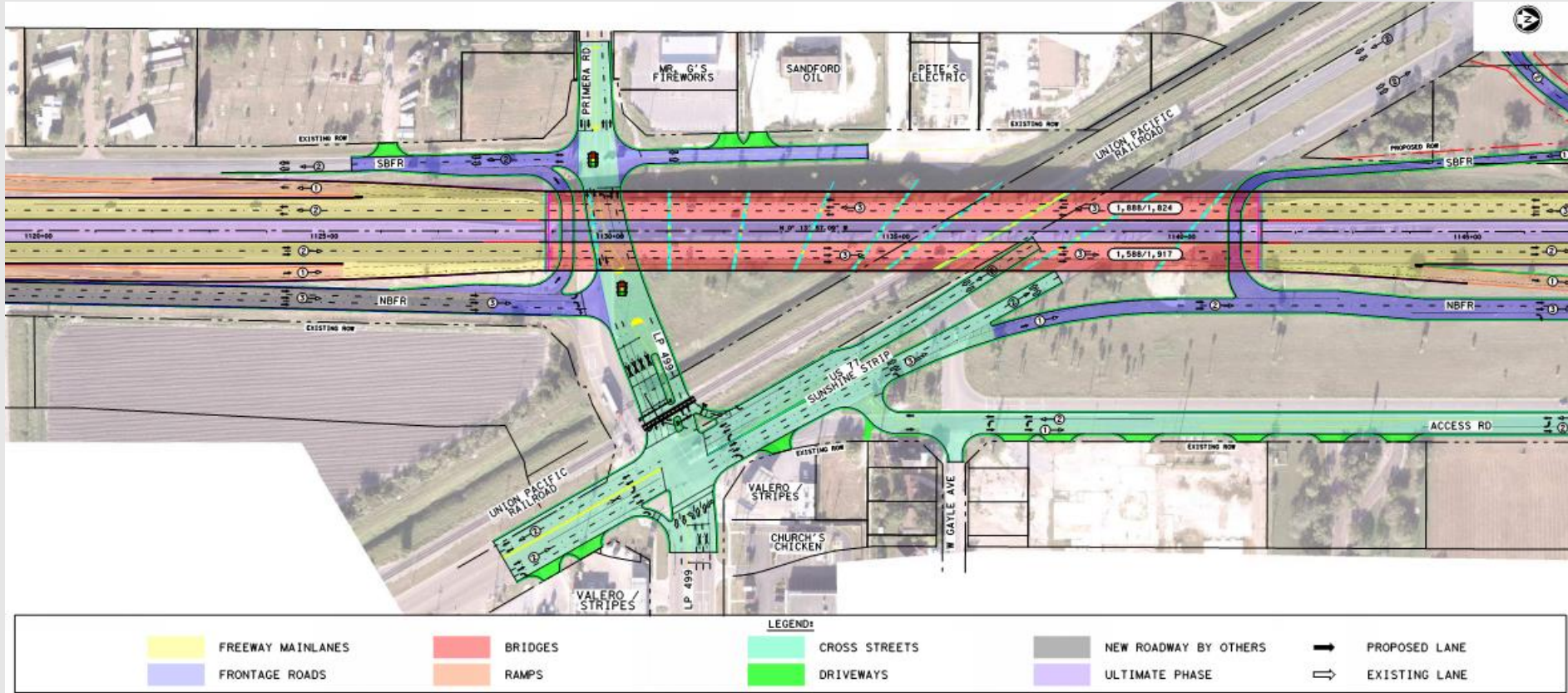
Project Purpose

- Reconstruct the I-69E main lanes and bring up to interstate standards
- Increase design speed
- Reconfigure entrance and exit ramps for operational improvement

Proposed Typical Section – Animation

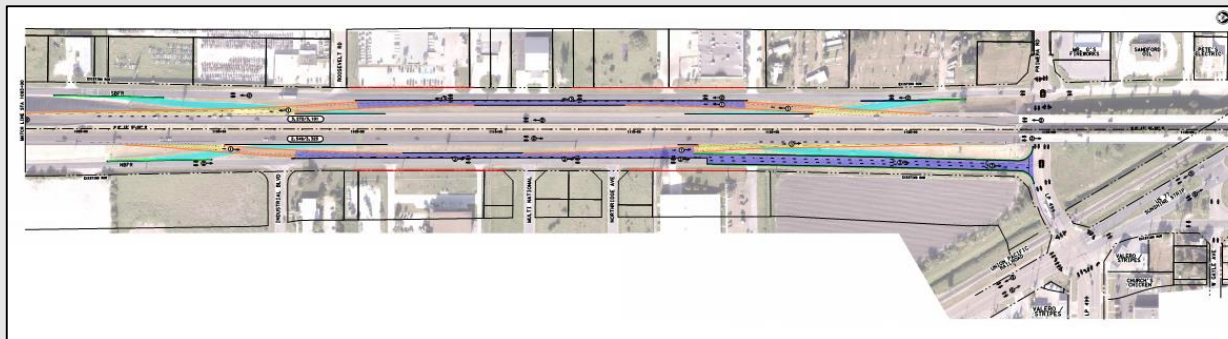


Proposed Schematic and Legend – Aerial View



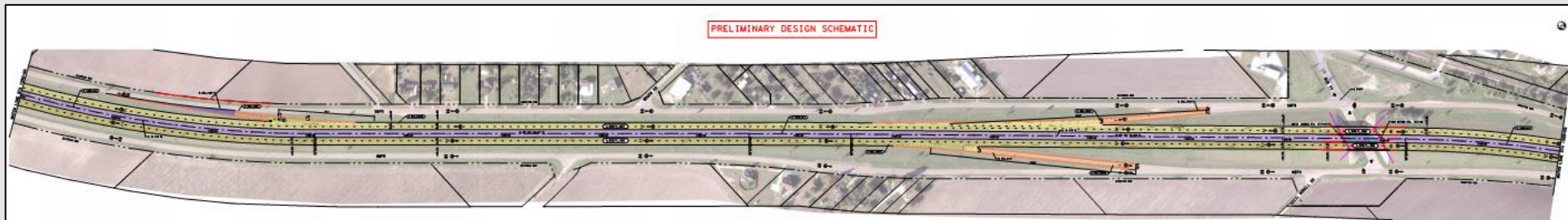


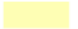

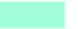







PHASE I



PHASE II

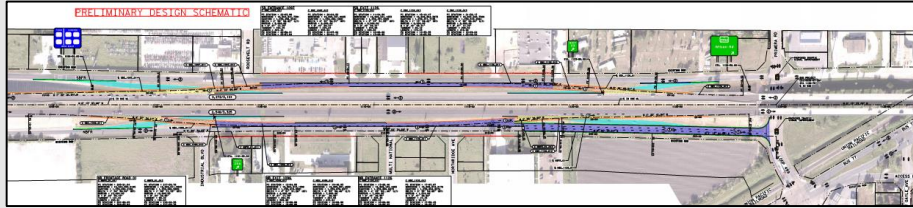
PRELIMINARY DESIGN SCHEMATIC



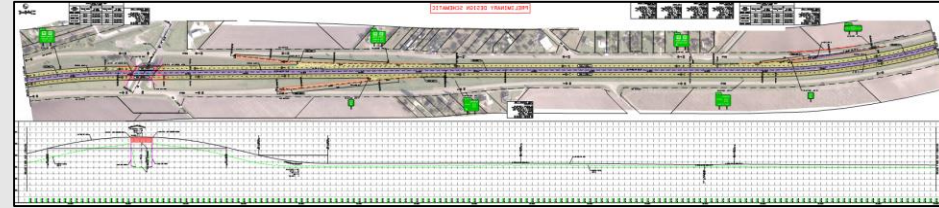
| LEGEND: | | | | | |
|---|------------------|--|-----------|---|-----------------------|
|  | FREWAY MAINLANES |  | BRIDGES |  | CROSS STREETS |
|  | FRONTAGE ROADS |  | RAMPS |  | NEW ROADWAY BY OTHERS |
| | |  | DRIVEWAYS |  | ULTIMATE PHASE |
| | | | |  | PROPOSED LANE |
| | | | |  | EXISTING LANE |



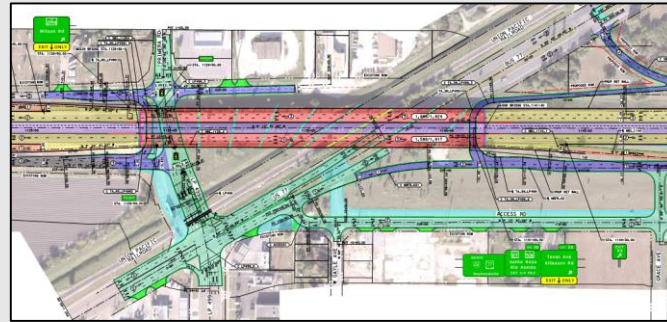
PHASE I



PHASE II



The project area schematics can be viewed more closely on the project website:
<https://www.txdot.gov/inside-txdot/get-involved/about/hearings-meetings/pharr/052621.html>



Project Improvement Description



- Reconstruct existing roadway to a six-lane road with concrete barrier
- Redesign and reconfiguration of several access ramps
- Construct new frontage roads
- Redesign the intersection at Loop 499 with Business 77, and Starbuck Rd with Business 77
- Increase speed from 55 mph to 75 mph
- Translocate Palm trees from the ROW, to be replanted







- Biological Resources including Threatened and Endangered Species and Habitat
- Community Impacts
- Water Resources
- Hazardous Materials
- Archeological Resources
- Non-Archeological Historic Properties
- Section 4(f)/6(f) Properties
- Noise Impacts (pending)



- Approximately 1.06 acres of new right of way would be required to construct the proposed improvements
- No residential or commercial displacements are anticipated
- No adverse community impacts are anticipated with the proposed project
- Approximately 13% of the project area is within the 100-year floodplain and 2% of the project area is within the 500-year floodplain
- Approximately 0.43 acres of non-jurisdictional wetlands
- Mitigation is not anticipated
- No hazardous materials action is anticipated for the project area
- Impacts to threatened and endangered species are not anticipated
- No historic or archeological sites are anticipated to be affected
- No parks and recreation areas occur in the project area
- Traffic noise analysis is awaiting traffic data

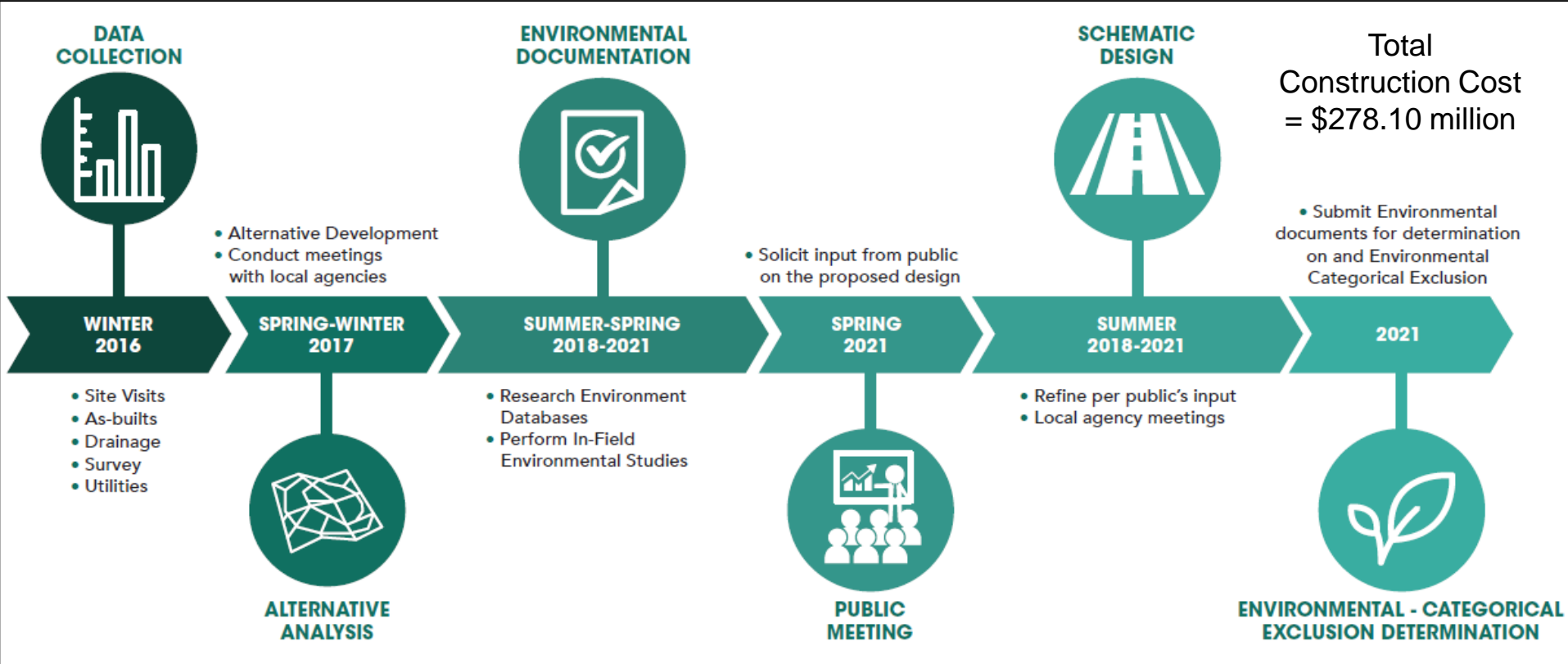
Right of Way (ROW) Information



- Approximately 1.06 acres of ROW
- No displacements or relocations
- Follow Federal and State Laws
- The Uniform Relocation Assistance and Real Property Acquisition Policy Act of 1970 (Uniform Act)
- Right-of-Way Brochures are available on the TxDOT Website: <http://txdot.gov/inside-txdot/forms-publications/publications/landowner-rights.html>
- Information about the benefits, services and Right of Way Acquisition schedule can be obtained by calling the TxDOT District Office at (956) 702-6110



Schedule/Next Steps and Cost



How To Submit Your Comments



All comments must be received or postmarked by Friday, June 11, 2021, to be included in the official meeting documentation.



Online

www.txdot.gov
Keyword search
I-69E Interstate
Improvements



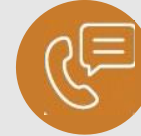
Email Us

Jose.J.Lopez@txdot.gov



Mail-in Comments

TxDOT Pharr District
600 West Interstate 2
Pharr, Texas 78577



Leave a Voicemail

956-702-6195

Additional Questions?

Any questions regarding this project may be made at anytime during the project development process.

Please contact:

Javier Lopez, Project Manager

Phone: 956-702-6195

Email: Jose.J.Lopez@txdot.gov



In-Person Meeting – May 27th
8 a.m.-5 p.m.

TxDOT San Benito District Office
1350 East Bus Highway 77
San Benito, Texas 78586



Please Contact
Javier Lopez, Project Manager
Phone: 956-702-6195
Email: Jose.J.Lopez@txdot.gov



**Thank you for participating in this
virtual public meeting**

Please remember to submit comments by
Friday, June 11