



HCRMA

HIDALGO COUNTY REGIONAL MOBILITY AUTHORITY

INTERNATIONAL BRIDGETRADE CORRIDOR (IBTC)

**From 365 Tollway and FM 493 to I-2
Hidalgo County, Texas**

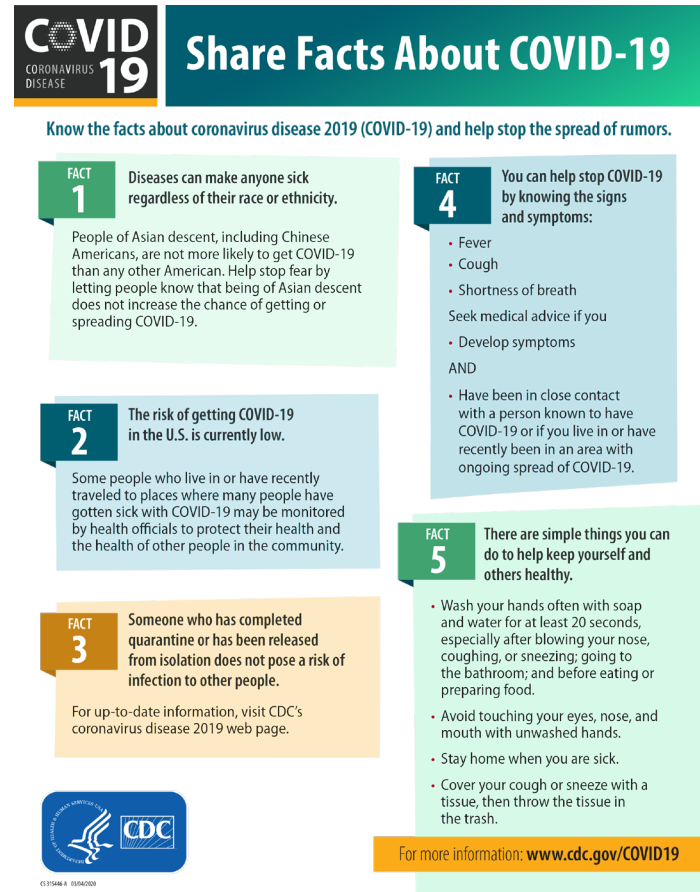
Pre-Recorded Virtual Public Hearing with an In-person Option

**Hidalgo County Precinct 2 Community Resource Center
1429 S Tower Rd, Alamo, TX 78516
Thursday, March 17, 2022**



Virtual Public Hearing in response to Public Health

- Given the COVID-19 outbreak the HCRMA and TxDOT are offering this public hearing in an online format and providing an in-person format for individuals who would like to participate in person instead of online.
- The same information provided online will be available at the in-person option.



COVID-19
CORONAVIRUS DISEASE

Share Facts About COVID-19

Know the facts about coronavirus disease 2019 (COVID-19) and help stop the spread of rumors.

FACT 1 Diseases can make anyone sick regardless of their race or ethnicity.

People of Asian descent, including Chinese Americans, are not more likely to get COVID-19 than any other American. Help stop fear by letting people know that being of Asian descent does not increase the chance of getting or spreading COVID-19.

FACT 2 The risk of getting COVID-19 in the U.S. is currently low.

Some people who live in or have recently traveled to places where many people have gotten sick with COVID-19 may be monitored by health officials to protect their health and the health of other people in the community.

FACT 3 Someone who has completed quarantine or has been released from isolation does not pose a risk of infection to other people.

For up-to-date information, visit CDC's coronavirus disease 2019 web page.

FACT 4 You can help stop COVID-19 by knowing the signs and symptoms:

- Fever
- Cough
- Shortness of breath

Seek medical advice if you

- Develop symptoms


AND

- Have been in close contact with a person known to have COVID-19 or if you live in or have recently been in an area with ongoing spread of COVID-19.

FACT 5 There are simple things you can do to help keep yourself and others healthy.

- Wash your hands often with soap and water for at least 20 seconds, especially after blowing your nose, coughing, or sneezing; going to the bathroom; and before eating or preparing food.
- Avoid touching your eyes, nose, and mouth with unwashed hands.
- Stay home when you are sick.
- Cover your cough or sneeze with a tissue, then throw the tissue in the trash.

For more information: www.cdc.gov/COVID19



CS15486 8 05/20/20

Online materials are available at, www.hcrma.net/ibtc.html or at www.txdot.gov keyword search "IBTC."

Memorandum of Understanding

National Environmental Policy Act (NEPA) Assignment to the Texas Department of Transportation

Memorandum of Understanding

The environmental review, consultation, and other actions required by applicable Federal environmental laws for this project are being, or have been, carried-out by TxDOT pursuant to 23 U.S.C. 327 and a Memorandum of Understanding dated December 9, 2019 and executed by the Federal Highway Administration and TxDOT.

Agenda

- Welcome
- Project Overview and Description
- Right-of-Way (ROW)
- Environmental Overview
- Next Steps
- Public Comment Process

Purpose of this Virtual Public Hearing

- Encourage and maintain effective communication with the public
- Update the public on project status and recommendations
- Present to the public the Draft Environmental Assessment
- Comply with State and Federal Requirements, such as Chapter 26 of the Parks and Wildlife Code
- Offer an opportunity for public input and comments
- Develop a record of public participation

Public Outreach and Notification

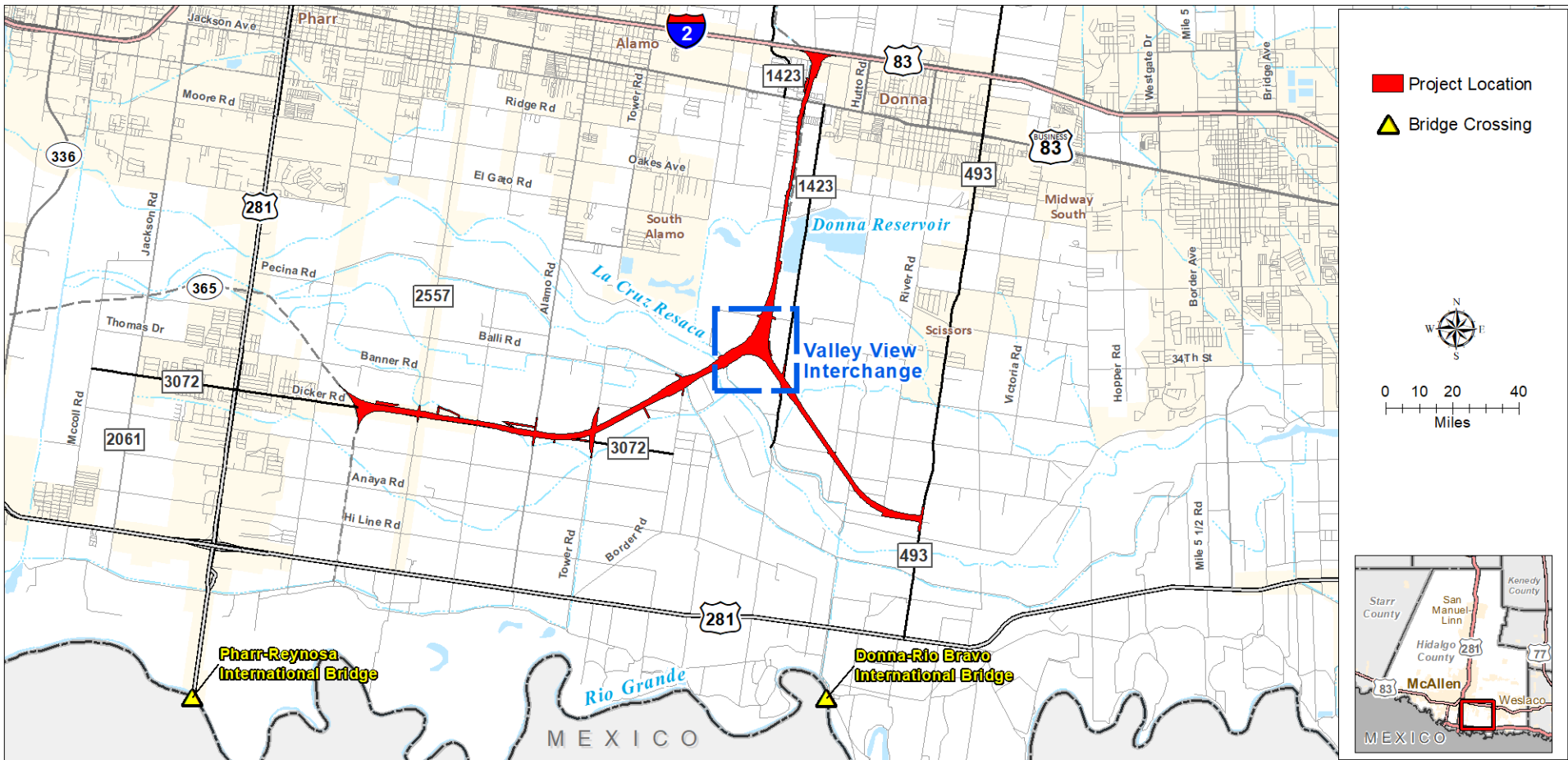
The public hearing notice was published in local newspapers and mailed to adjacent property owners and elected officials.

Publication	Publication Date
The Monitor	Tuesday, February 15, 2022
	Wednesday, February 23, 2022
	Wednesday, March 2, 2022
The Brownsville Herald	Wednesday, March 2, 2022
El Periódico	Wednesday, March 2, 2022
El Nuevo Herald	Thursday, March 3, 2022

Letters to Elected Officials – mailed and emailed on Tuesday, February 22, 2022

Notices to Adjacent Property Owners – mailed on Friday, February 25, 2022

Project Location Map



Need and Purpose

Need:

- Many of the east/west existing roadways south of I-2 and north of US 281 (Military Highway) are neither direct nor continuous;
- Inefficient movement of vehicular traffic from cross-border travel at the international bridges; and
- Regional population and employment growth placing increasing pressure on transportation infrastructure in Hidalgo County.

Purpose:

- Improve local/regional mobility for transporting persons/goods from international ports of entry in the area north to I-2 and between US 281 and FM 493.

Project Description

Phase I (Interim Design) [shown on slides 11-16]

- Frontage roads in east and west legs
- Mainlanes in north leg
- Overpass at Business US 83
- Improve intersections with existing local roadways

Phase II (Ultimate Design)

- Six-lane facility with frontage roads, ramps, and overpasses
- Timing of construction determined by future traffic conditions
- High-water bridge would be constructed across the IBWC main floodway

Project Sections (Legs)

- West Leg: 365 Tollway/FM 3072 Interchange to Valley View Interchange
- East Leg: Valley View Interchange to FM 493
- North Leg: Valley View Interchange to I-2

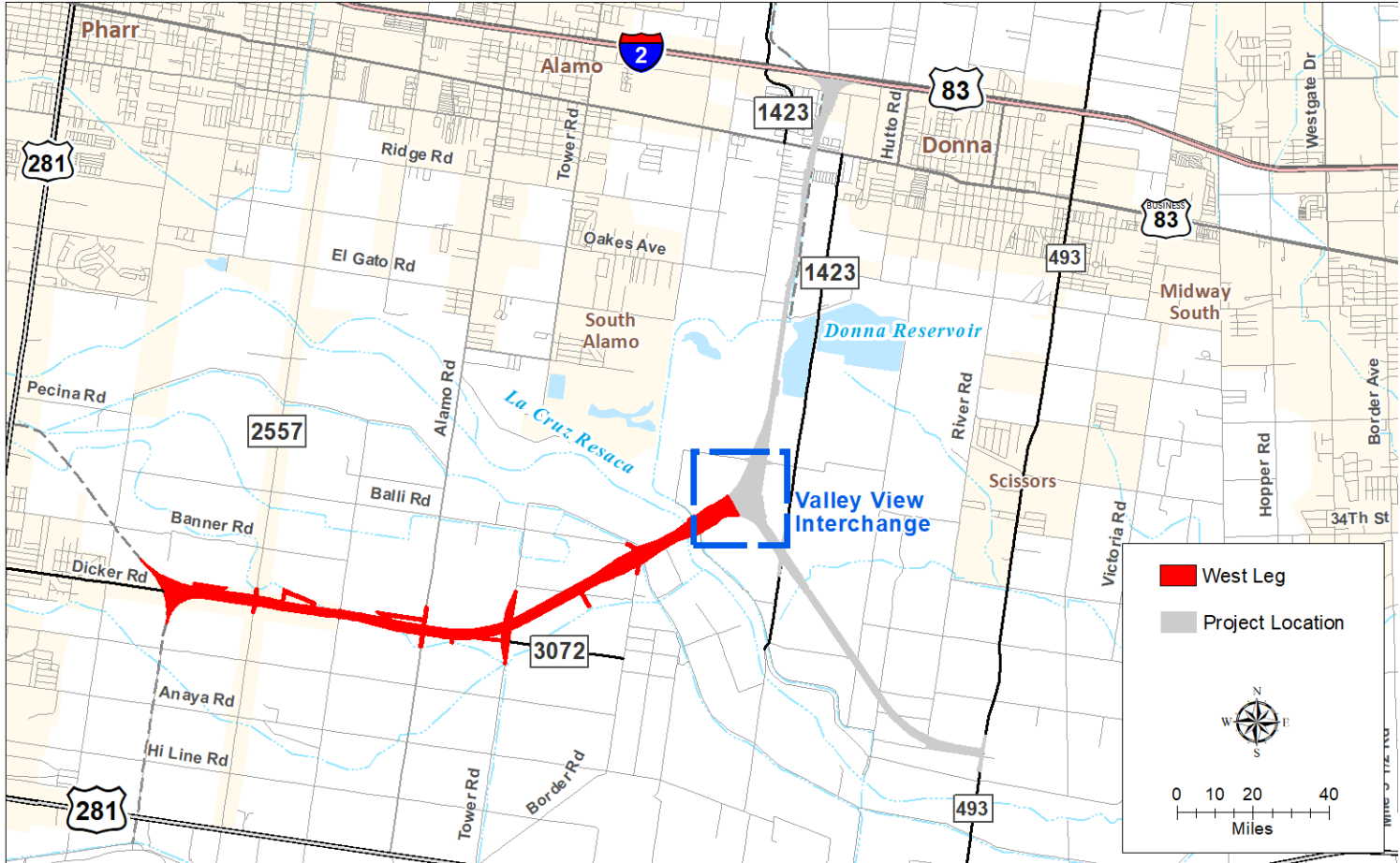
Bicycle and Pedestrian Accommodations

Phase I and II will include bicycle and pedestrian accommodations by adding 5-foot-wide sidewalks as well as 10-foot-wide shoulders between the following:

- Between 365 Tollway to Border Road and Valley View Interchange to FM 493
- Between Border Road and CR 1821
- Between CR 1821 to I-2/US 83

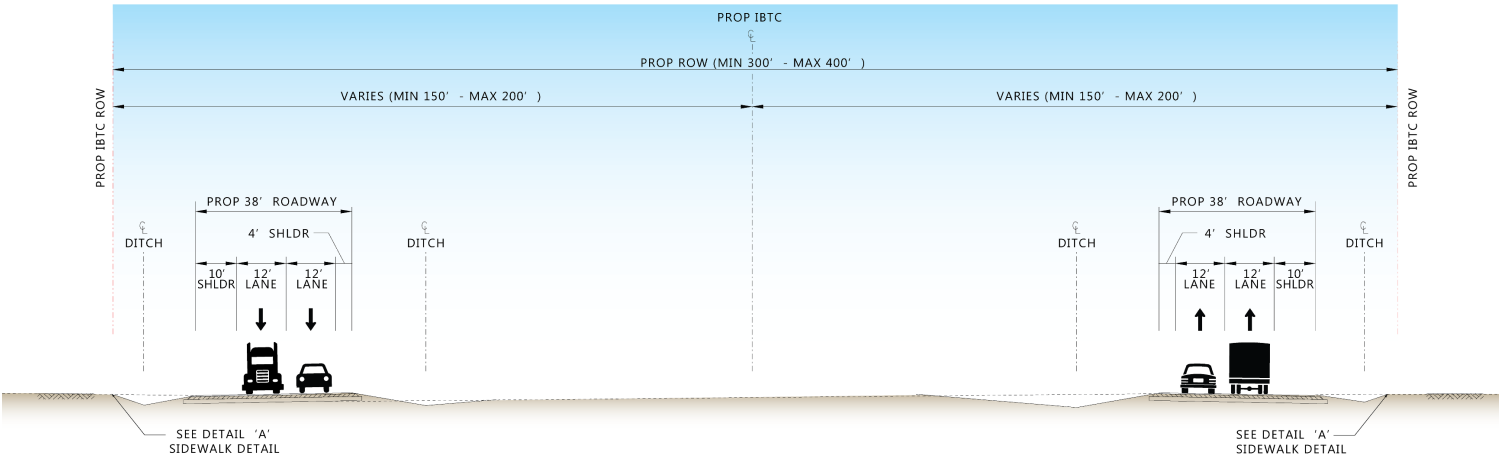
Project Sections: West Leg

365 Tollway/FM 3072 Interchange to Valley View Interchange

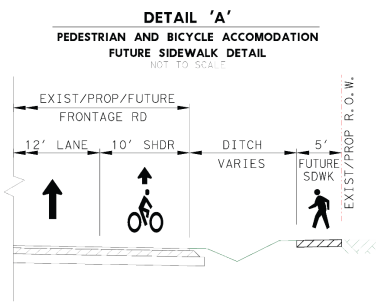
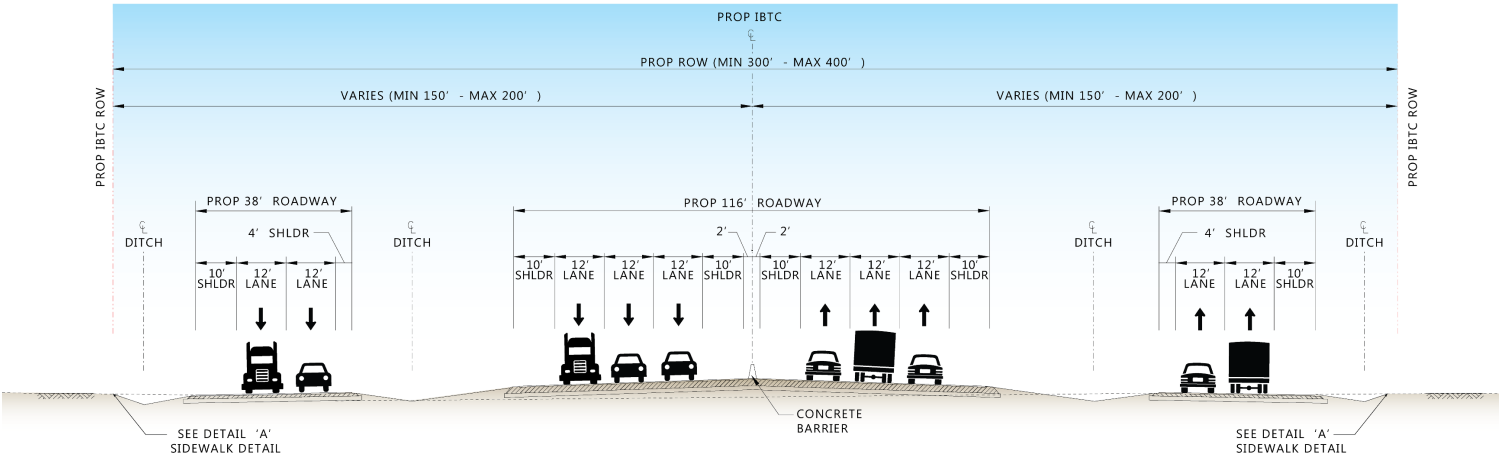


West Leg Proposed Typical Section

TYPICAL SECTION: WEST PHASE I (INTERIM)

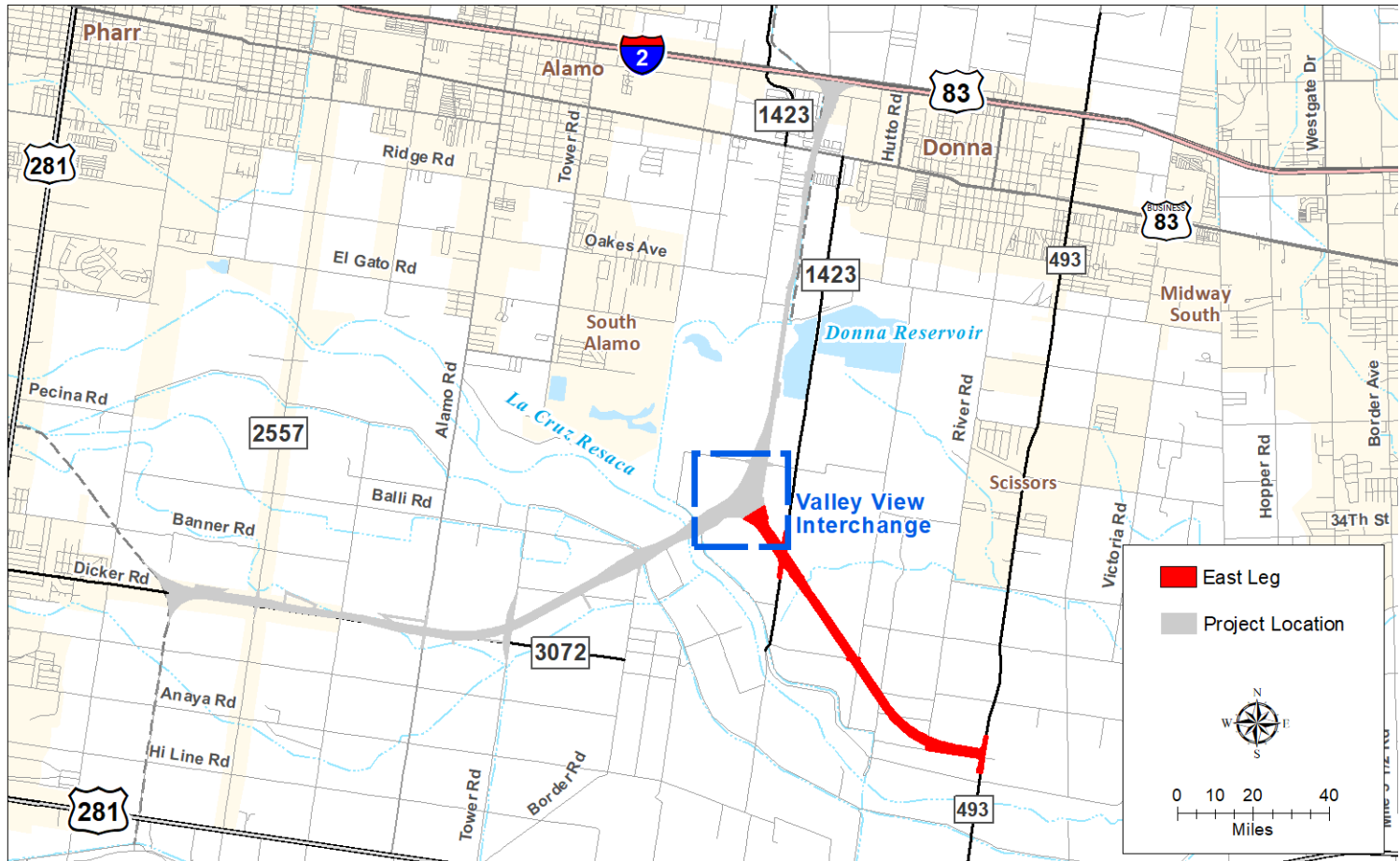


TYPICAL SECTION: WEST PHASE II (ULTIMATE)



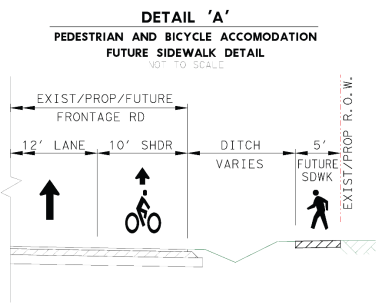
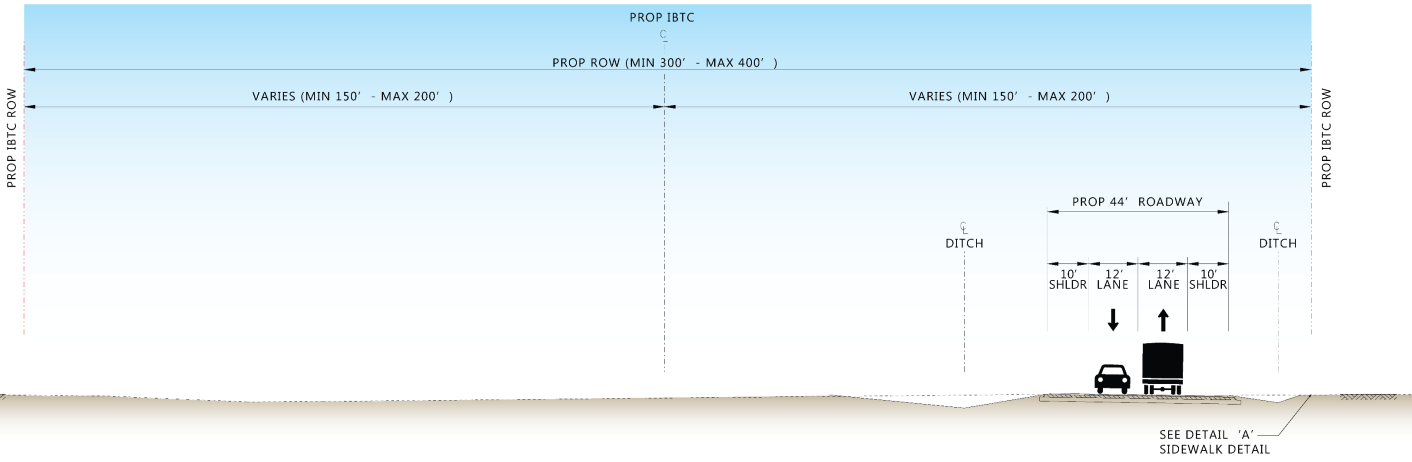
Project Sections: East Leg

Valley View Interchange to FM 493

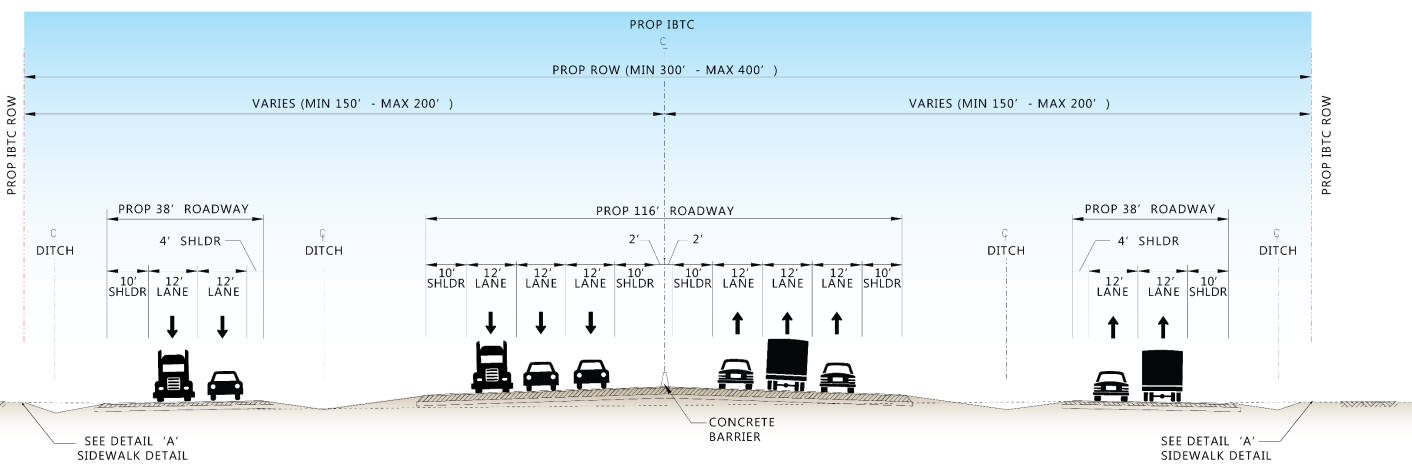


East Leg Proposed Typical Section

TYPICAL SECTION: EAST PHASE I (INTERIM)

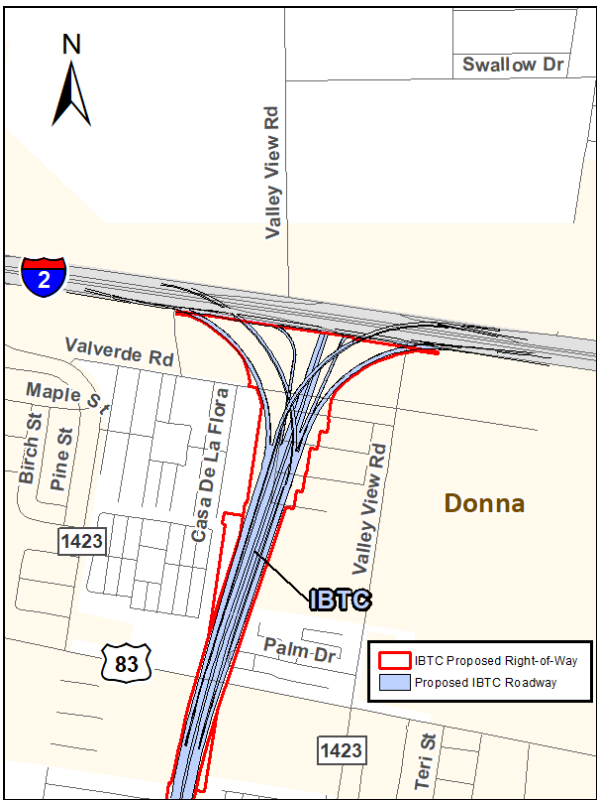
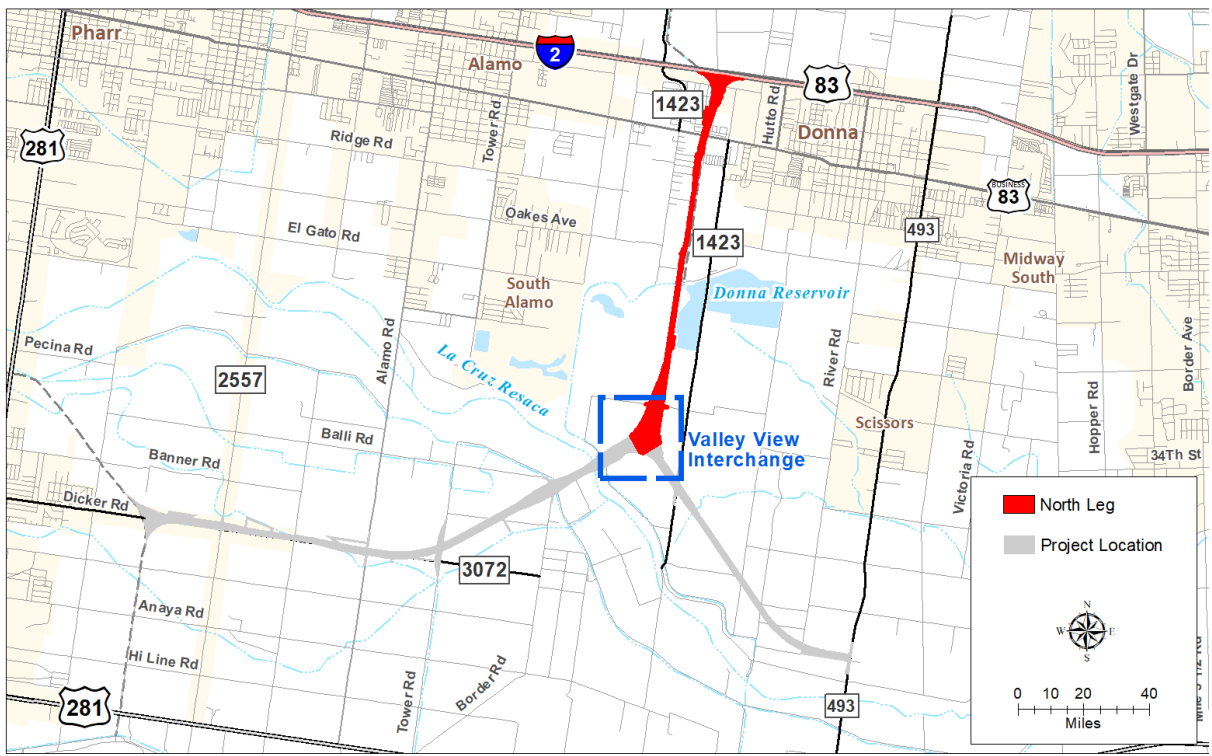


TYPICAL SECTION: EAST PHASE II (ULTIMATE)



Project Sections: North Leg

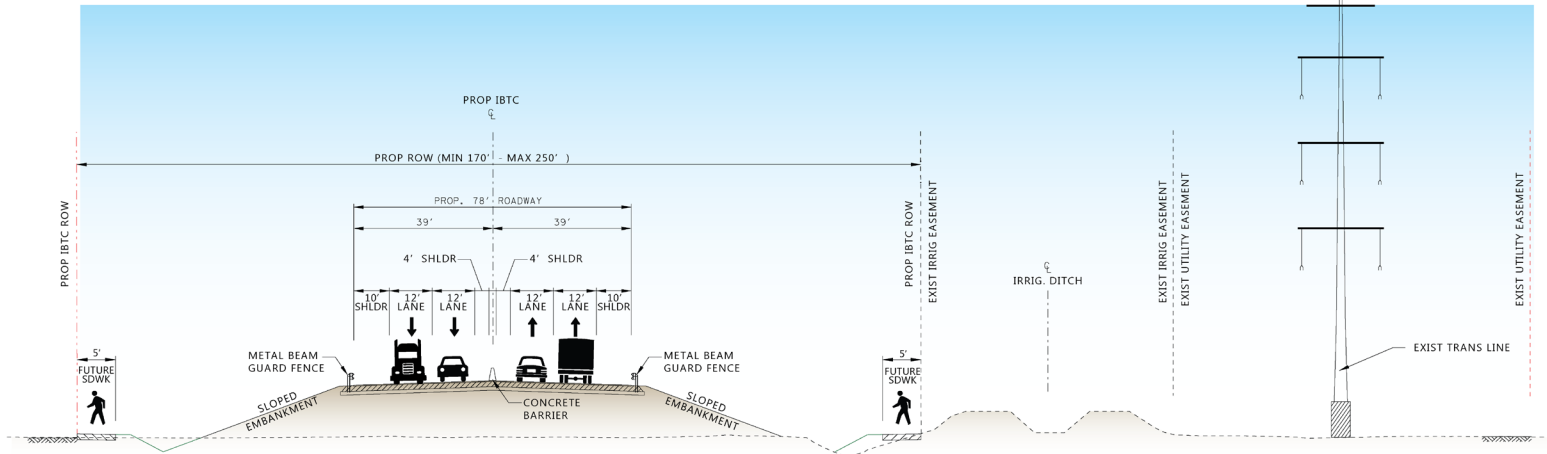
Valley View Interchange to I-2



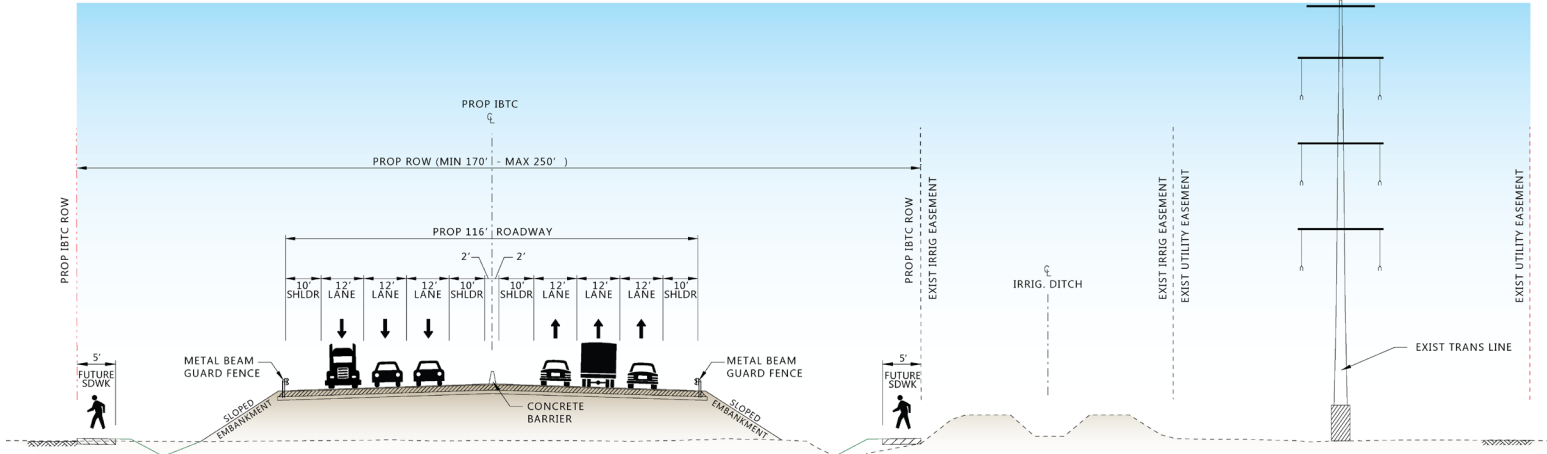
Direct Connectors at I-2

North Leg Proposed Typical Section

TYPICAL SECTION: NORTH - SOUTH PHASE I (INTERIM)



TYPICAL SECTION: NORTH - SOUTH PHASE II (ULTIMATE)



Right-of-Way (ROW) and Construction Cost

Right-of-Way (ROW)*:

- Existing transportation ROW use – 59.1 acres
- Proposed ROW acquisition – 678.0 acres
- Early ROW acquisition – 38.2 acres
- Permanent Easements – 28.3 acres

Construction Cost Estimate:

- Phase I: \$128 million
- Phase II: \$120 million

* Acreages are approximate

Right of Way (ROW)

- Information on the right-of-way acquisition process is available at www.hcrma.net/ibtc.html or www.txdot.gov and on the Virtual Public Hearing webpage:
 - Landowner's Bill of Rights
 - Relocation Assistance
 - State Purchase of Right of Way
- Right-of-way professionals representing the HCRMA will be at the in-person meeting if you should want to speak to them regarding the right-of-way acquisition process.
- Information concerning services and benefits to affected property owners and information about the tentative schedule for right of way can be obtained from the HCRMA office. Please call Eric Davila, P.E., PMP, CCM at (956) 402-4762 or by email at eric.davila@hcrma.net.

Environmental

In compliance with the National Environmental Policy Act (NEPA) and other federal and state environmental regulations, the environmental process has included an evaluation of potential environmental impacts to the natural and human environment, including, but not limited to:

- Vegetation
- Farmland soils
- Threatened and Endangered Species
- Water Resources
- Air Quality & Greenhouse Gas/Climate Change
- Induced Growth & Cumulative Impacts
- Cultural Resources
- Hazardous Materials
- Community Impacts
- Traffic Noise
- Bicycle & Pedestrian Accommodations

The Draft Environmental Assessment is available for public review online in the following website www.hcrma.net/ibtc.html or www.txdot.gov keyword search "IBTC." Once public hearing comments have been addressed, a final Environmental Assessment will be prepared.

Environmental

Natural Resources

- Farmlands impacts would occur; however, further evaluation was not required per NRCS
- Project may affect, but is not likely adversely affect, one federally-listed species. Voluntary Conservation Measures will be implemented during project design and construction, including Best Management Practices (BMPs).
- Potential impacts to 18 state-listed species and 35 Species of Greatest Conservation Need (SGCN) are anticipated. BMPs will be implemented to avoid impacts pursuant to MOU with TPWD.
- No wetlands identified. Anticipated impacts to Waters of the U.S. include the Donna Reservoir, La Cruz Resaca, and several watercourses throughout project limits. USACE Section 404 permitting will be required.
- No significant encroachment into mapped 100-year floodplains
- International Boundary and Water Commission – Main Floodway crossing

Environmental

Cultural Resources

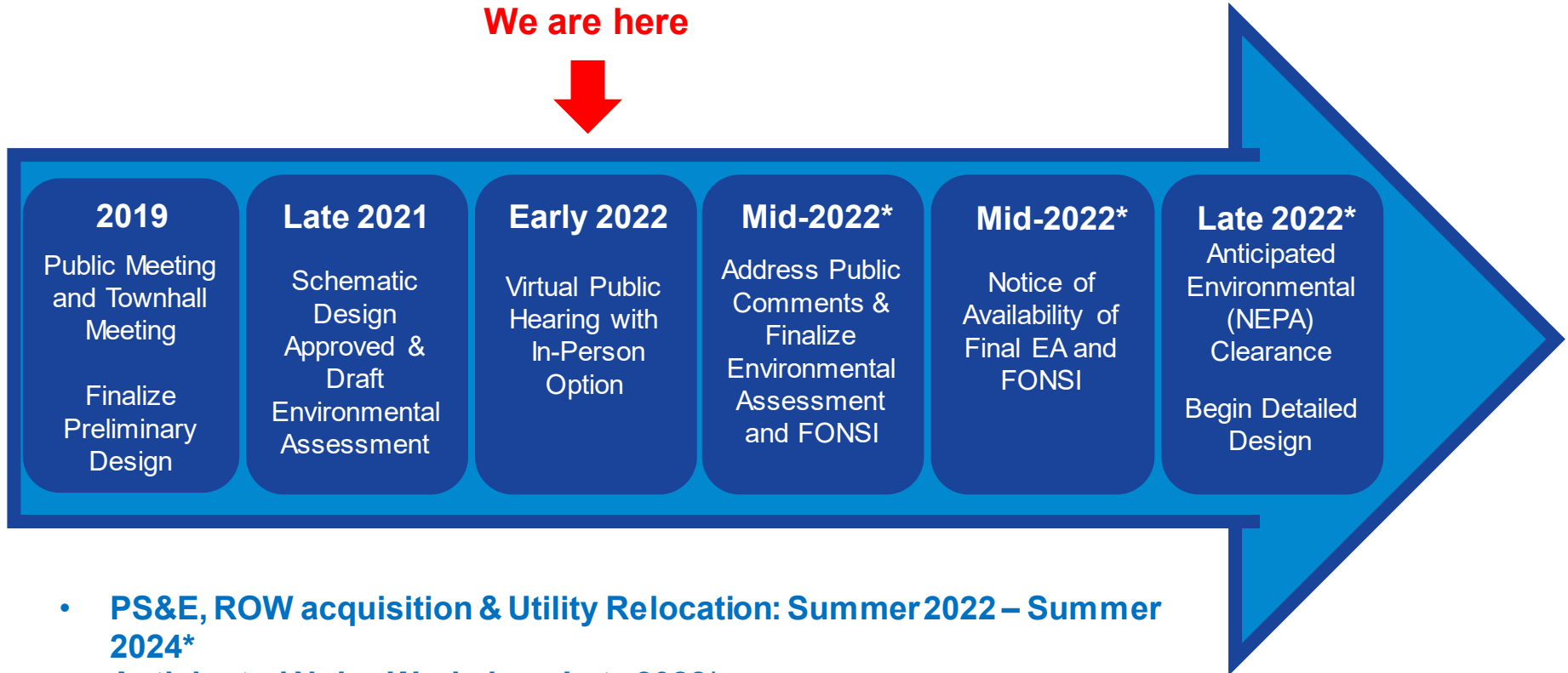
- Archeological Resources – potential impacts to archeological resources will be mitigated by research-oriented data recovery in advance of construction.
- No adverse effect to historic properties

Human Environment

- Air Quality – In attainment area; no significant impacts on air quality
- Traffic Noise – Study completed. Noise barrier proposed along Village Grove. Noise Workshop will be conducted after NEPA process complete.
- Hazardous Materials (Donna Superfund Site)
- Chapter 26 of the Parks and Wildlife Code (Hidalgo County Irrigation District #2)
- Community Impacts Analysis
 - 85 anticipated displacements (80 residential and 5 other structures)

Timeline and Next Steps

We are here



- **PS&E, ROW acquisition & Utility Relocation: Summer 2022 – Summer 2024***
- **Anticipated Noise Workshop: Late 2022***
- **Anticipated Construction Begin (Phase I – Interim): Spring 2025***
- **Anticipated Construction Begin (Phase II – Ultimate): TBD (When Funding Becomes Available)**

***This project schedule and dates are preliminary and subject to change.**

How to Submit Comments

Options for Commenting:

- Written comments can be placed in the comment box at the in-person hearing
- Comment Card can be downloaded from the project webpage www.hcrma.net/ibtc.html or www.txdot.gov keyword search “IBTC”
- E-mail comments to: IBTC@blantonassociates.com
- Mail comments to: Blanton & Associates, Inc.
Attn: IBTC Project
5 Lakeway Centre Court, Suite 200
Austin, TX 78734
- Leaving a verbal comment via voicemail: (956) 278-0687



Comment period starts Thursday, March 17, 2022, at 5 p.m. and ends on Friday, April 1, 2022, at 11:59 p.m.

All verbal testimony and written comments received on or before Friday, April 1, 2022, will be included as part of the official record.



HCRMA

HIDALGO COUNTY REGIONAL MOBILITY AUTHORITY

Thank You for Your Participation!

Questions may be asked at any time during the project development.

Contact Information

HCRMA Chief Development Engineer

Eric Davila, P.E., PMP, CCM

Phone: (956) 402-4762

Email: eric.davila@hcrma.net

