



September 9, 2025

Welcome to the Virtual Public Meeting with In-Person Option for the:

Nolana Avenue Widening Project

Virtual Option: Wednesday, December 17, 2025

In-Person Option: Thursday, December 18, 2025, from 5:00 p.m. to 7:00 p.m.

CSJ: 0921-02-396

Hidalgo County, Texas

The environmental review, consultation, and other actions required by applicable Federal environmental laws for this project are being, or have been, carried-out by TxDOT pursuant to 23 U.S.C. 327 and a Memorandum of Understanding dated July 17, 2025, and executed by FHWA and TxDOT.

Hello and welcome to the pre-recorded virtual public meeting with an in-person open house option for the Nolana Avenue widening project.

My name is Velma Garcia, and I am a part of the consultant team working on this project. On behalf of the City of McAllen and the Texas Department of Transportation's (TxDOT) Pharr District, I would like to welcome and thank you for participating in this virtual presentation that was shared with the public on Wednesday, December 17, 2025.

This is a pre-recorded presentation. Please note that you may pause this presentation at any point to allow more time to view the slides. You may also pause the presentation and navigate forward or backward as needed.

The virtual public meeting includes an In-Person option for individuals who would like to participate in person instead of online. The In-Person Option will be held on Thursday, December 18, 2025, from 5:00 p.m. to 7:00 p.m. at the McAllen Public Library, Meeting Rooms A and B, 4001 N. 23rd Street, McAllen, Texas 78504.

We are also interested in your comments on the project. Instructions for how to submit your comments and contact information for questions and comments are noted at the end of this pre-recorded presentation.

HELP MAKE TEXAS SAFER FOR EVERYONE

DRIVE *like a* TEXAN™

Kind. Courteous. Safe.

DriveLikeATexan.com



For too long, drivers have been inundated with safety campaigns that focus almost exclusively on the negative aspects of unsafe driving, from punitive measures to tragic consequences. Unfortunately, drivers see so many of these types of campaigns that they no longer cut through the clutter, limiting the impact of the messaging. It's time to change how we communicate with Texas drivers. Drive like a Texan is all about communicating a positive message. This campaign exemplifies the pride, camaraderie and responsibility of being a Texan. It doesn't matter how long you've lived here, or where you're from. All that really matters is that you embrace those values that represent the best of Texas. Kindness. Courtesy. Respect. By reminding every Texan to practice those values every day – especially when they're behind the wheel – we can make Texas roads safer for everyone.

Public Meeting Agenda

04 | Purpose of Public Meeting

05 | Project Limits

06-10 | Project Need and Purpose

11-17 | Project Description

18 | Environmental Studies

19 | Next Steps in Project Development

20-21 | How to Provide Comments

3

In this presentation we will discuss:

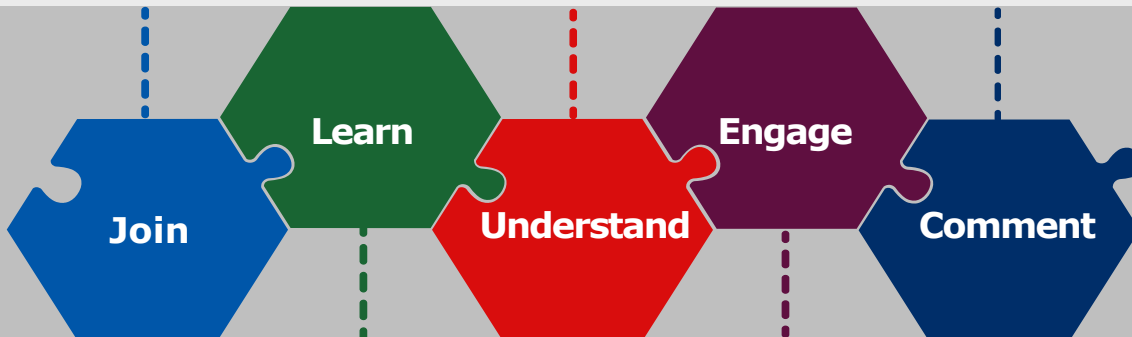
- the purpose of the public meeting
 - the project limits
 - the need and purpose for the project
 - the description of the project
 - environmental studies being conducted
 - the anticipated project schedule; and
 - how to provide comments
-
- Contact information will also be provided should you have questions or comments or need additional information on the project.

Public Meeting Purpose

Join the process by participating in this public meeting

Understand the design for this project

Comment on the information provided at this meeting



Learn about the project area and its needs

Engage by providing input on the design

4

The purpose of this virtual public meeting with an in-person open house option is to encourage and maintain effective communication with the public and provide project-specific information as it relates to the Nolana Avenue project in Hidalgo County, Texas. This presentation will provide information about the proposed design for Nolana Avenue.

At this meeting, the City of McAllen and TxDOT would like you to:

- Join the project process by participating in this meeting
- Learn about the project area and its needs
- Understand the proposed design for this project
- Engage by providing input on the design, and
- Comment on the information provided at this meeting

Your input and comments are an important part of this process, and we encourage you to provide comments on the project. As I mentioned earlier, your continued participation throughout the planning and development of the project is very important. You are encouraged to talk to your neighbors and refer them to the City of McAllen or TxDOT so they can also make comments and be included in this process.

Project Limits

Project Name

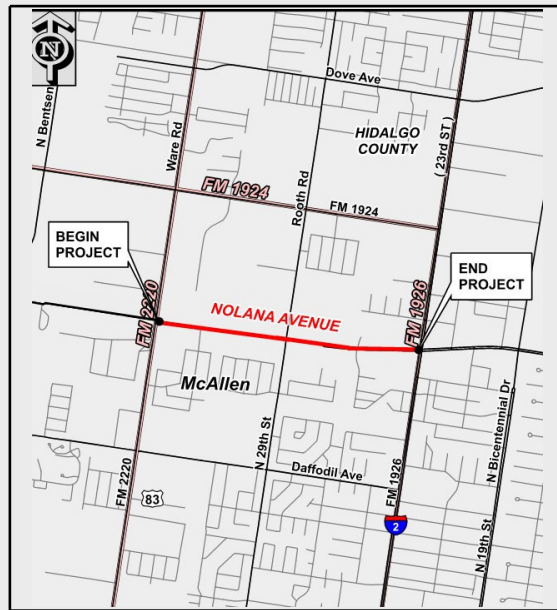
NOLANA AVENUE

Project Limits

From FM 2220 (Ware Road)
to FM 1926 (23rd Street)

Project Length

One (1) Mile

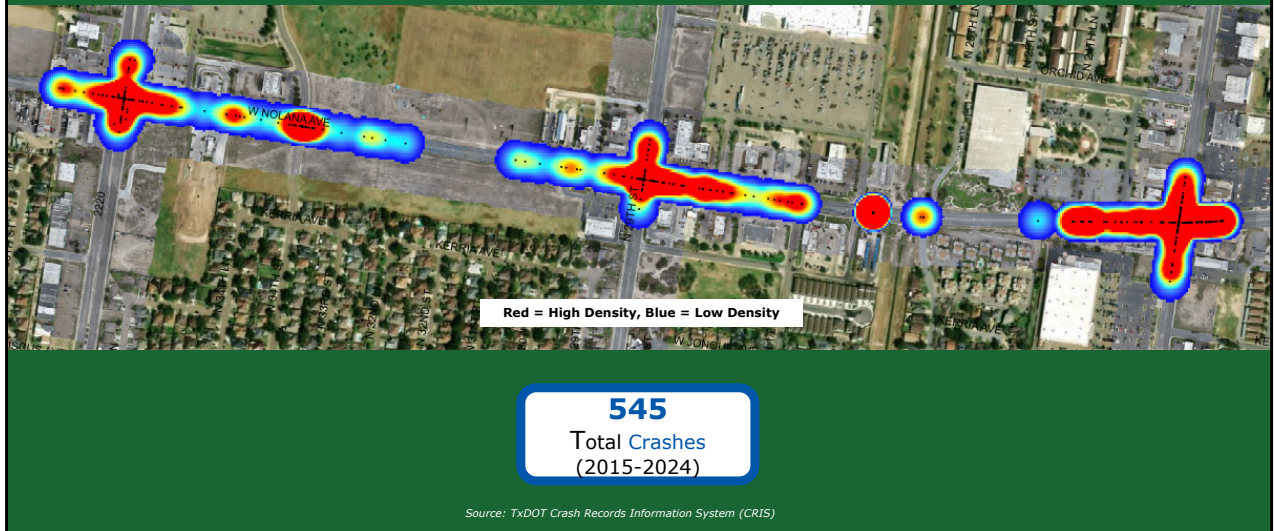


The proposed project is located on Nolana Avenue and extends from FM 2220 (Ware Road) to FM 1926 (23rd Street). The project is approximately one mile long and located in the city of McAllen, Hidalgo County, Texas.

From FM 2220 (Ware Road) to FM 1926 (23rd Street), the City of McAllen and TxDOT propose to add one travel lane in each direction, a center raised median, a sidewalk on the south side of the roadway, and a shared-use path for pedestrians and bicyclists on the north side.

The map shown on your screen shows the project limits of the proposed project as a solid red line.

Project Needs – Crash Heat Map

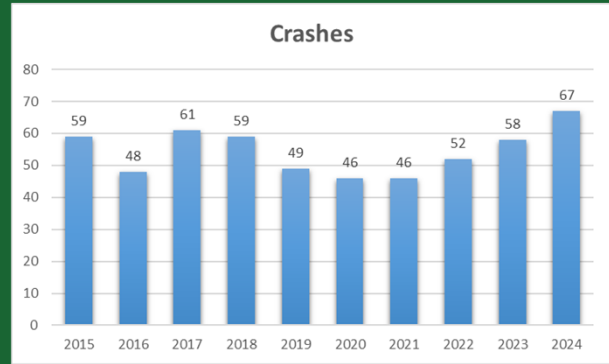
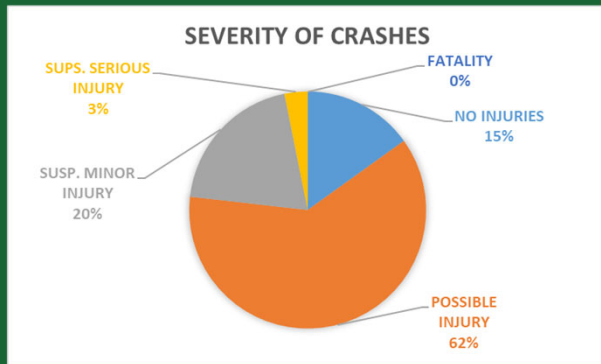


Nolana Avenue is in need of safe and efficient traffic management.

This **map** shows higher density of crashes in red and lower density of crashes in blue. The high crash areas are mostly at the signalized intersections, as depicted by the red clusters.

The map also shows smaller clusters in between the signalized intersections. These clusters are significantly higher than other similar corridors in McAllen.

Project Needs – Crash Severity and Number

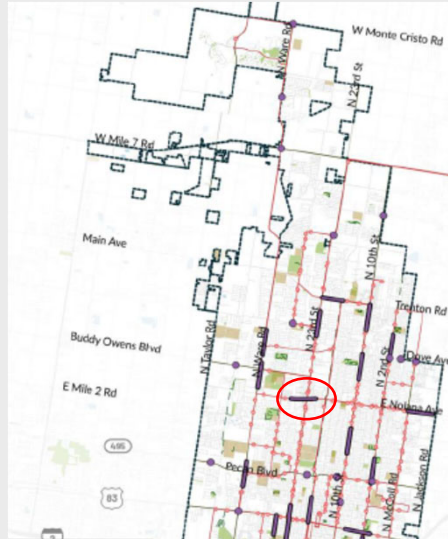


Source: TxDOT Crash Records Information System (CRIS)

A breakdown of the severity of crashes through this area shows that there have been zero fatalities since 2015 and only about 3% of the crashes resulted in suspected serious injury. Of all the crashes reported since 2015, only about 15% of the crashes resulted in no injuries.

The number of crashes per year through this area remained steady at 46 to 49 between 2019 and 2021. They have been rising each of the past three years and are expected to continue to increase as the traffic increases.

Project Needs



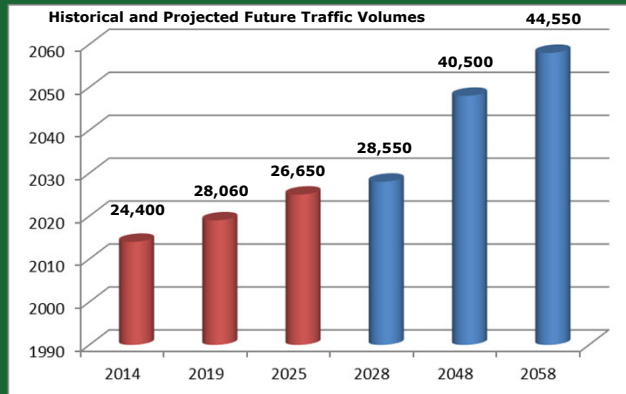
Source: The McAllen Vision Zero Plan, August 2024

Nolana Avenue has been identified as a High Injury Corridor in the City of McAllen's Vision Zero Action Plan.

This map identifies this section of Nolana Avenue as a high injury area for vehicles.

Project Needs

Inadequate to Meet Current and Future Demand



9.2%
Increase **Historic**
Traffic Volume
2014 - 2025

56%
Increase **Projected**
Traffic Volume
2028 - 2058

Sources: TxDOT Transportation Planning and Programming Division (2023), TxDOT Statewide Planning Map (2025)

This chart shows that the current existing roadway is congested and is projected to get worse with an anticipated **56 percent** increase in traffic volumes from 2028 to 2058.

Project Purpose



Enhance safety and mobility

Reduce congestion and delays

Improve the quality of traffic flow

Improve bicycle and pedestrian accommodations

The purpose of this project is to enhance safety and mobility, reduce congestion and delays, improve the quality of traffic flow, and improve bicycle and pedestrian accommodations.

Estimated Project Schedule



Tentative Ready to Let Date (Construction)
Early 2027



Estimated Construction Completion
18 months

The City of McAllen is in the process of designing the proposed improvements to Nolana Avenue.

There are several steps in developing this project before construction begins. The project engineers have collected and analyzed existing and future traffic data and developed the preliminary design schematics which are available for viewing on the public meeting webpage.

We are collecting feedback from the community and will use that feedback in conjunction with additional technical evaluations to refine the design. The project will be evaluated for environmental impacts and compliance and receive environmental clearance.

The engineers will then develop final plans to be used for construction bidding, and the City of McAllen will tentatively receive bids for construction in early 2027. We anticipate construction to be completed within **18 months**. The tentative date to receive bids is in early 2027 and is subject to change.

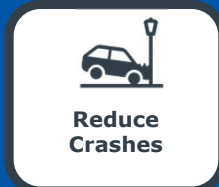
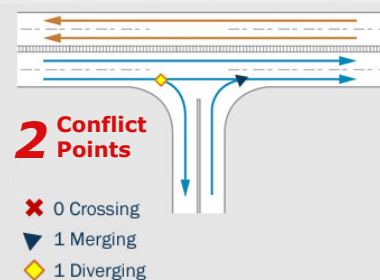
Raised Medians Reduce Conflict Points

Two-way Left Turn Lane (TWTL)



VS.

Raised Median



Under this project, raised concrete medians are proposed to be constructed between Ware Rd. and 23rd Street. Constructing raised medians is an effective and proven way to improve safety and mobility. Median openings will be provided at the signalized intersections and other locations as recommended by the ongoing traffic studies.

So how do medians help improve safety? Medians reduce turning conflict points.

Two examples of an intersection configuration are shown on the screen. The one on the left is the existing two-way left turn lane configuration on Nolana Avenue. The one on the right is the raised median configuration proposed for Nolana Avenue. Comparing the one shown on the left to the right shows that constructing raised medians will reduce the number of turning conflict points from 11 with the existing two-way left-turn lane, to just 2 by implementing the proposed raised median.

Cars turning left across traffic are at risk of collisions with through traffic in both directions. Medians also reduce crashes caused by head-on traffic and crossing traffic. The median creates a barrier for opposing directions of traffic and allows for a safer way to manage traffic movements.

The following videos show the safety concerns on the existing two-way left turn lane by showing examples of near miss crashes on a street similar to Nolana Avenue.

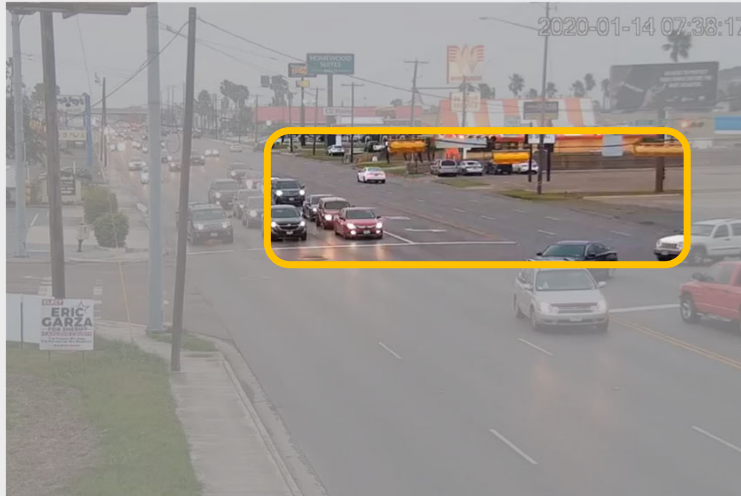
Left Turn from Flush Median



13

This video shows an example of a left turn on a typical urban roadway with a flush median. Note the red car tries to make a U-turn into oncoming traffic nearly missing a collision. If there had been a raised median in place, the red car would have traveled to a designated U-turn area before attempting to turn.

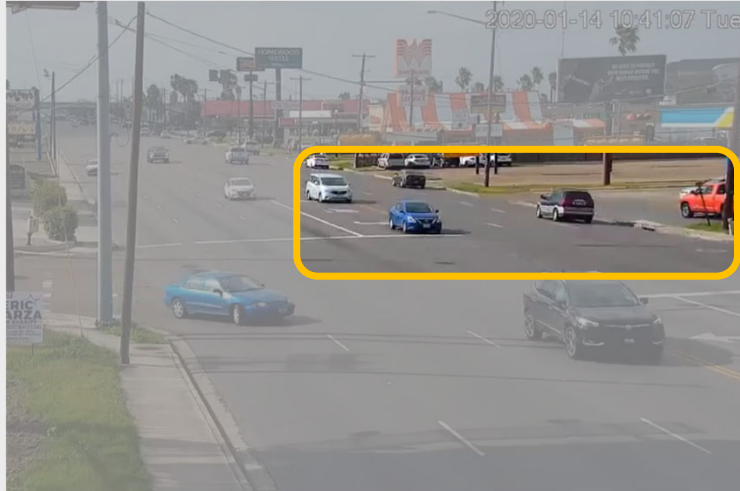
Potential Head-on Collision



14

This video shows an example of a potential head-on collision on the same typical urban roadway. Note the black truck is making a left turn off of the urban roadway into the adjacent development just as the school bus is turning left onto the urban roadway, nearly missing a head-on collision. If there had been a raised median in place, there would have been a barrier preventing the truck from going straight across the roadway.

Potential Head-on or Turning Angle Collision

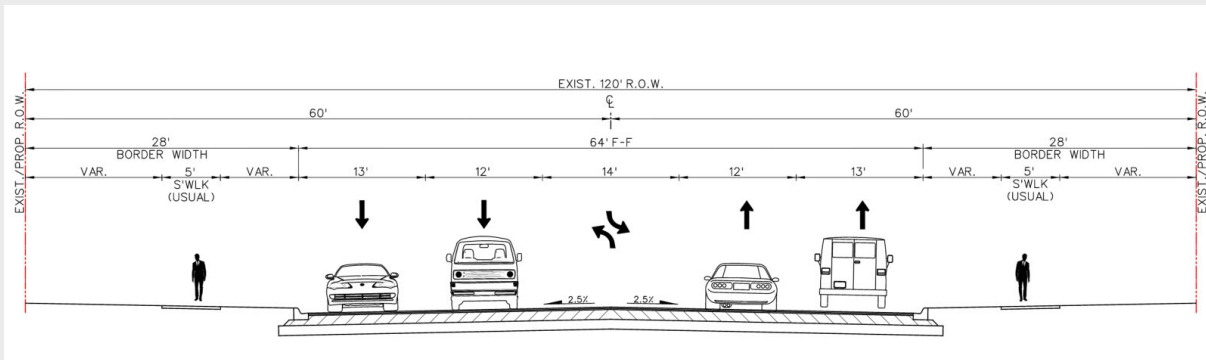


15

This video is another example of a potential collision on the same urban roadway. The white van is making a left turn off of the urban roadway to enter the Valero driveway as the red car is turning right onto the urban roadway—nearly missing a head-on or turning angle collision. If there had been a raised median in place, there would have been a barrier preventing the van from crossing in front of oncoming traffic.

Project Description

Existing Conditions on Nolana Avenue From FM 2220 (Ware Road) To FM 1926 (23rd Street)

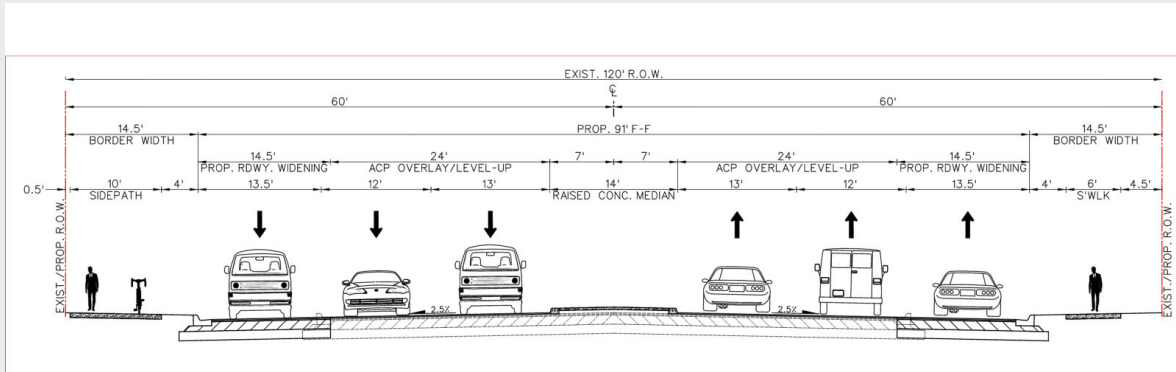


16

The existing conditions along Nolana Avenue consists of a four-lane urban facility with a flush median. The roadway section shown in this slide extends from FM 2220 (Ware Road) to FM 1926 (23rd Street) and consists of four 12-foot-wide travel lanes in each direction, separated by a continuous 14-foot-wide center two-way left turn lane and sidewalks within an existing right of way width of 120 feet.

Project Description

Proposed Improvements on Nolana Avenue From FM 2220 (Ware Road) To FM 1926 (23rd Street)



17

The proposed roadway from FM 2220 (Ware Road) To FM 1926 (23rd Street) would consist of three 12-foot-wide travel lanes in each direction, separated by a 14-foot-wide raised median. A sidewalk would be constructed on the south side of the roadway and a 10-foot-wide shared use path on the north side. No additional right of way would be required for the proposed improvements. The existing stormwater management system would be upgraded.

Environmental Documentation

Hazardous Materials Sites

Historic & Archeological Resources

Water Resources



Traffic Noise

Threatened & Endangered Species

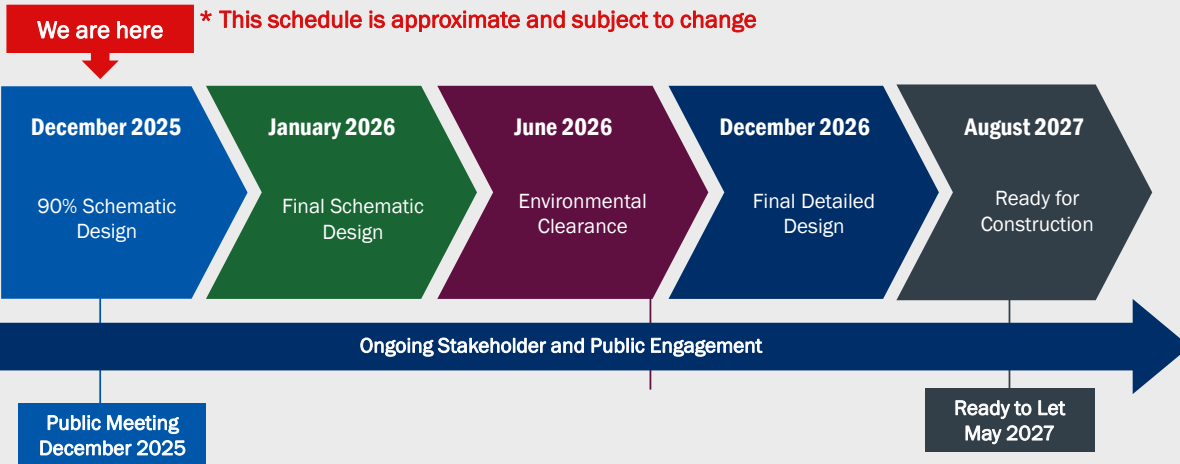
Community Impacts

18

In accordance with the National Environmental Policy Act or NEPA, technical analyses are being completed on the proposed project to document the potential environmental impacts of the project. The areas being studied include:

- Biological resources, including threatened and endangered species and their habitats
- Water resources,
- Cultural resources, including historic and archeological resources
- Hazardous materials
- Traffic noise and
- Community impacts

Next Steps in Project Development



Now that we have reviewed the project, I would like to highlight the estimated timeline for project completion.

Look for the red “We are here” arrow at the top left of your screen. After the comment period closes for this public meeting on January 2, 2026, the Project Team will evaluate the comments throughout the month of January. Based on the comments received and further design, the final schematic will be completed by **early next year**. Once all of the technical reports have been completed and approved, environmental clearance is anticipated in June of 2026. Once the project receives environmental clearance it will move into the final design stage with construction tentatively beginning by August of 2027.

How to Submit Your Comments

While comments are always welcome, they must be received on or before **Friday, January 2, 2026**, to be included in the official public meeting documentation.

Comments may be submitted in the following ways:

Comment Form

Download the comment form from the website, fill it out and email or mail it to the City of McAllen

Email

Submit to:
edmendoza@mcallen.net
Subject Line: **Nolana Avenue**

Mail

City of McAllen Engineering Dept.
1300 Houston Avenue
McAllen, TX 78501

Online Comment Form

Follow or click the links below or scan the QR Code on the right:

www.mcallen.net or
www.txdot.gov and search keyword "Nolana Avenue Widening Project"



Drop the Comment Form in the comment box at the in-person open house

20

The City of McAllen and TxDOT encourage you to review the materials regarding this project and provide feedback. While comments are always welcome, they must be received on or before Friday, January 2nd, 2026, to be included in the official public meeting documentation. As shown on this slide, there are several ways you can submit your comments. The comment form can be downloaded from the City of McAllen or TxDOT websites. Fill it out and email to edmendoza@mcallen.net. Include Nolana Avenue on the subject line. You can mail to City of McAllen, Attention Engineering Department 1300 Houston Avenue, McAllen, Texas 78501. You can also access the comment form at the city of McAllen's website at www.mcallen.net or by scanning the QR Code shown on the screen or at www.txdot.gov and search keyword "Nolana Avenue Widening Project". You can also drop the comment form in the comment box at the in-person open house. As a reminder, all comments must be received on or before **January 2, 2026**. Responses to comments received will be available online at City of McAllen's website and at www.txdot.gov, keyword search "Nolana Avenue Widening Project" once they have been prepared.

Project Information and Contacts

- To access the public meeting page visit www.txdot.gov/projects/hearings-meetings.html (keyword: Nolana Avenue Widening Project) or scan the QR code on the right.
- Or City of McAllen website: www.mcallen.net
- For study specific information contact the City of McAllen, City Engineer anytime during project development

Eduardo Mendoza, P.E.
Phone: (956) 681-1151
Email: edmendoza@mcallen.net



21

All information regarding the project can be found on the public meeting web page by clicking on the link shown on the screen or by scanning the QR code on the right.

Please don't hesitate to contact us with any questions.

For further questions regarding project specific information contact Mr. Eduardo Mendoza, City of McAllen, Director of Engineering by phone at (956) 681-1151 or email edmendoza@mcallen.net with any questions or comments at any time during the project development.

Conclusion of the Public Meeting

Thank you!

On behalf of the City of McAllen and Texas Department of Transportation, we sincerely thank you for your participation in this public meeting for the Nolana Avenue Project.

We would also like to thank the staff here at the McAllen Public Library for allowing us to use their facility for the in-person meeting on December 18, 2025.

Please remember to submit your comments by

Friday, January 2, 2026

22

The information shared in this virtual meeting will continue to be available on our meeting webpage. We are interested in hearing any feedback you might have on the information presented and the proposed project plans. Submit your comments by mail, email, online, or in-person. Your input will be evaluated in conjunction with the technical evaluations as we move forward with design. Responses to comments received by **Friday, January 2, 2026**, will be published with the virtual meeting report on the meeting webpage in the coming weeks. Thank you for your interest and we look forward to hearing from you.