

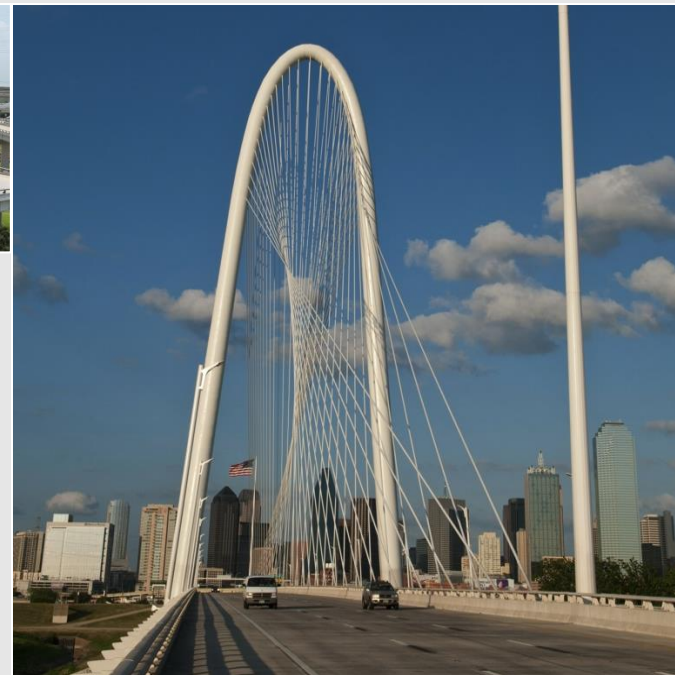


TEXAS DEPARTMENT OF TRANSPORTATION



STATE LOOP 195

PUBLIC MEETING





STATE LOOP 195

From FM 755 to 1 mile west of Loma Blanca Rd



Public Meeting Agenda

- **Welcome & Introductions**

Octavio Saenz – TxDOT Public Information Officer

- **Technical Overview**

Romualdo Mena Jr., P.E. – TxDOT Project Manager

- **Next Steps in Project Development**

Octavio Saenz - TxDOT Public Information Officer

- **Public Comment**

- **Adjournment**

Public Meeting Purpose

- Encourage and maintain effective communication with the public
- Provide project information on SL 195
- Follow an important step in the environmental process
- Receive public input and comments

Provide Your Comments

- Sign up to speak tonight
- Leave written comment form at registration table tonight
- Mail or drop off written comments to:

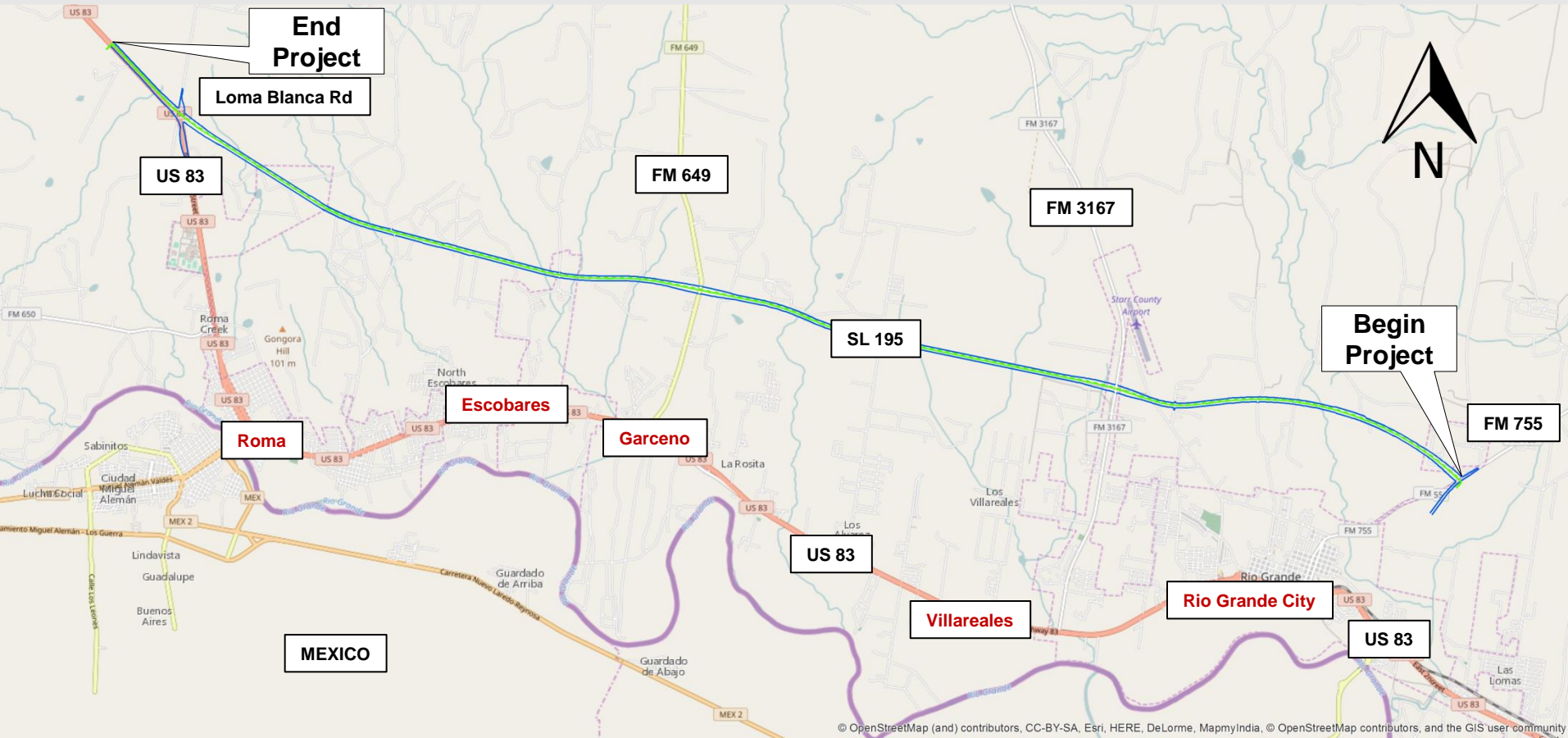
TxDOT Pharr District
Attn: SL 195
600 W. Interstate 2
Pharr, TX 78577

- Fax comments to (956) 702-6110
- Email comments to Robin.Gelston@txdot.gov
- Comments must be received or postmarked by
Wednesday March 8, 2017

Project Limits

State Loop 195 (SL 195)

- From FM 755 to 1 mile west of Loma Blanca Rd
- Total Length: 17.24 miles



- **Project Need:**
 - Increased congestion
 - Lack of mobility
 - Increased accident rate
 - Poor corridor connectivity
- **Project Purpose:**
 - Reduce congestion
 - Improve safety
 - Improve mobility and connectivity by providing a new 4 lane divided highway between Rio Grande City and the City of Roma.

Project Need and Purpose

Table 1: Traffic Projections for US 83, With and Without Proposed Project

US 83 Segment Location	ADT in Vehicles Per Day (vpd) in 2016		
	Without SL 195	With SL 195	Percent reduction with construction of SL 195
FM 755 to FM 3167	33,500	27,400	-18%
FM 3167 to FM 649	21,400	16,300	-24%
FM 649 to SP 200	21,600	19,500	-10%
SP 200 to Athens St	14,400	10,800	-25%
Athens St to Loma Blanca	5,000	3,100	-38%

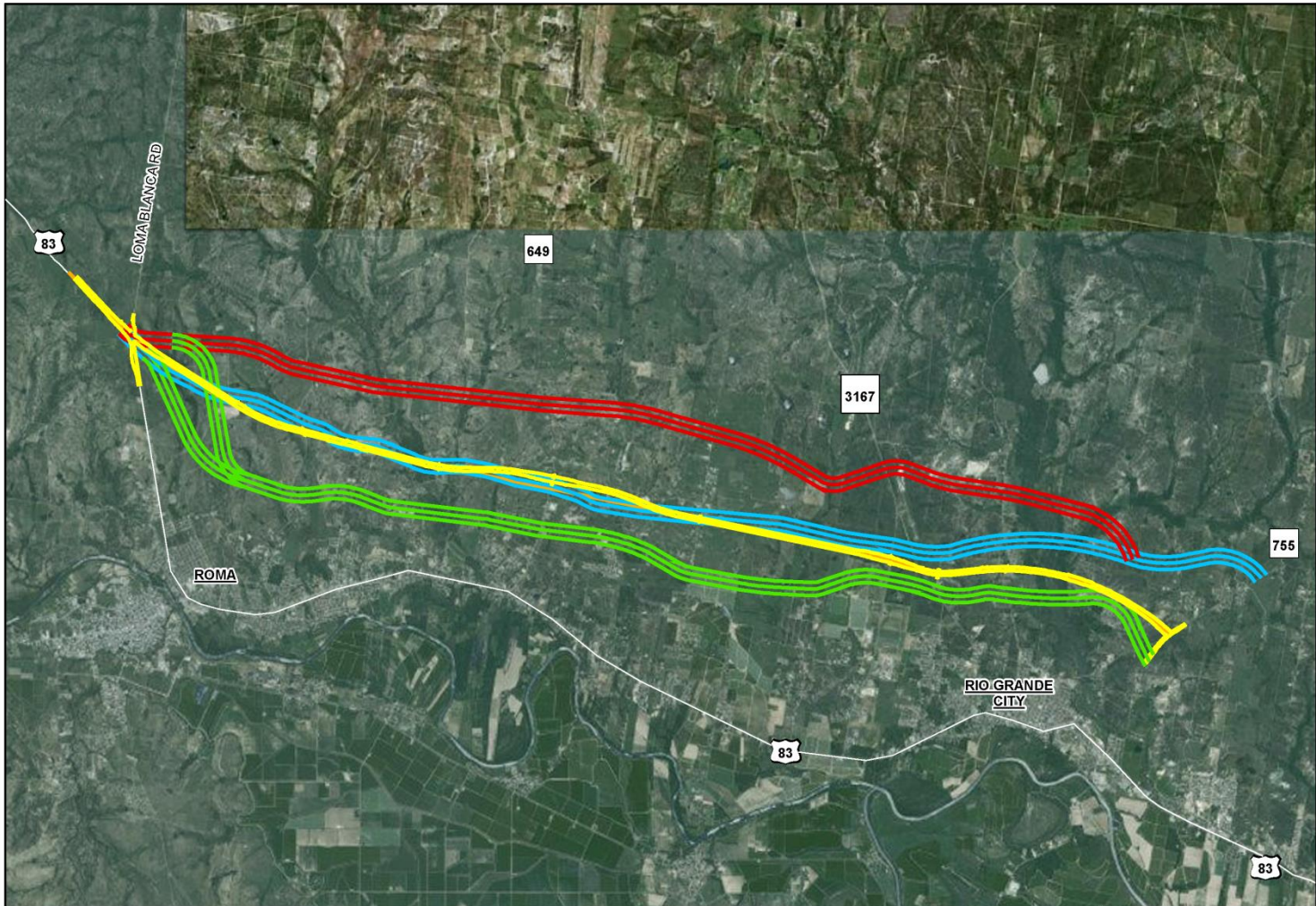
Source: TxDOT TP&P Traffic Projections, September 2014

Table 2: 2015 TxDOT Statewide Crash Rates

Road Type	Traffic Crashes per 100 million vehicle miles	
	Rural	Urban
Two-lane, two-way	100.60	250.5
Four or more lanes, divided	64.79	164.74

Source: http://ftp.dot.state.tx.us/pub/txdot-info/trf/crash_statistics/2013/02-2013.pdf

Corridors Evaluated



**STATE LOOP 195
PRELIMINARY CORRIDORS EVALUATED**

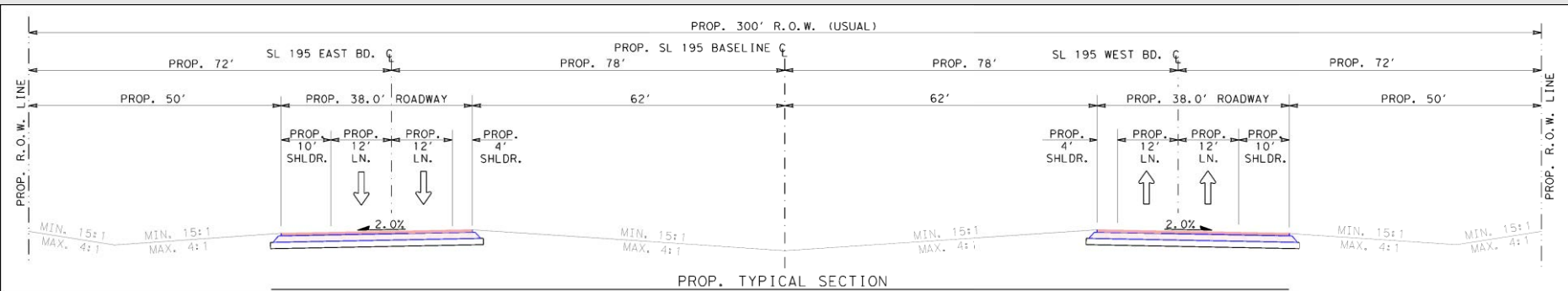
- Legend**
- PREFERRED ALTERNATIVE 2004
 - PREFERRED ALTERNATIVE
 - BLUE ALTERNATIVE
 - GREEN ALTERNATIVE
 - RED ALTERNATIVE

Project History

- Original Project Scope in 2000
 - Expressway with no frontage roads
 - Access (backage roads)
- Public Meeting held on Feb. 2,2000 in Roma,Texas
- Open House and Public Workshops held :
 - Rio Grande City on Dec. 7-10, 2004
 - Roma on Dec. 7-8, 2004
- Project put on hold in 2008 due to funding
- In Nov. 2012,additional Stakeholder Meetings were held with Starr County, Rio Grande City, City Of Escobares and City of Roma in Nov. 2012

SL 195 Proposed Typical Section

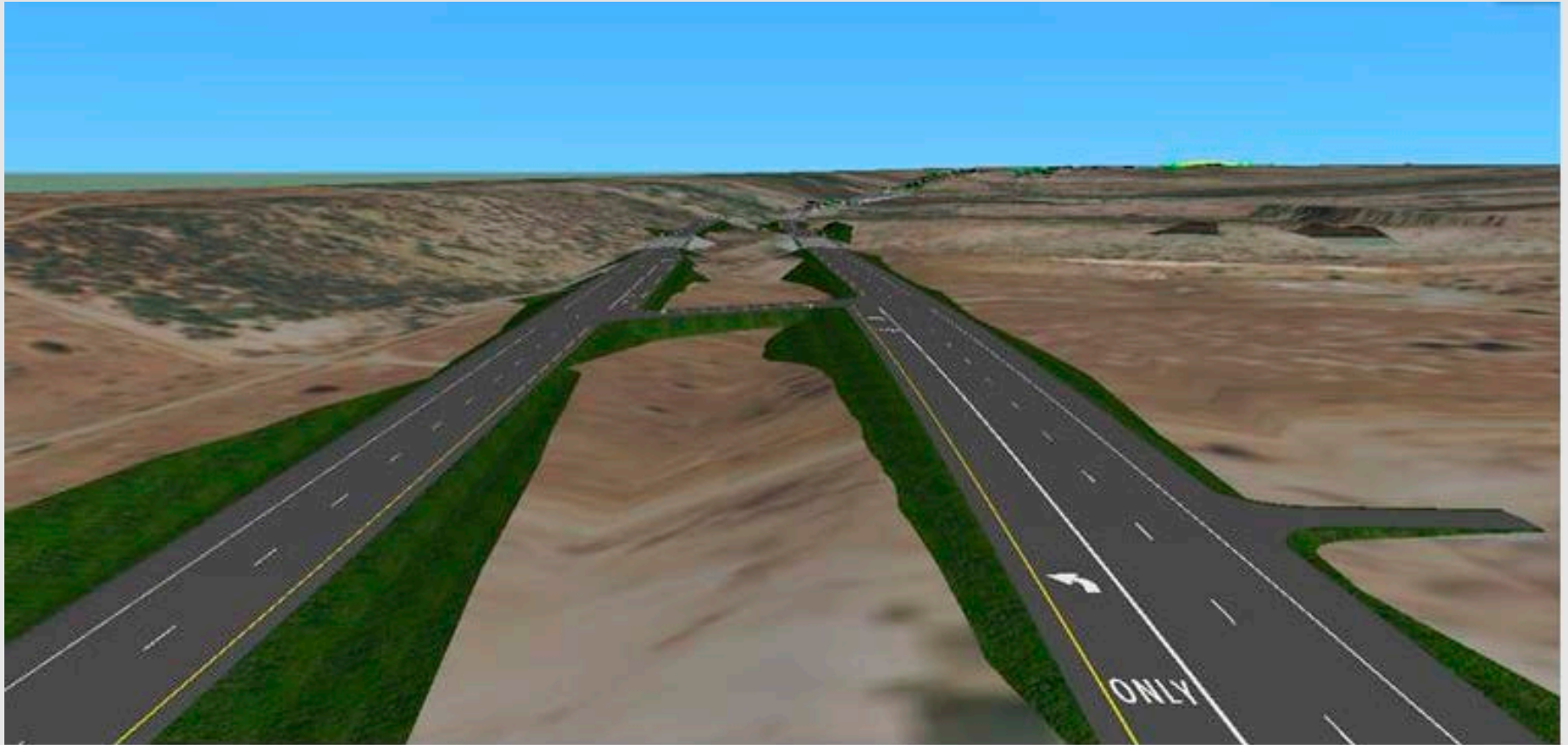
■ 300' R.O.W.



- 38' overall width of new roadway typical sections
- Eastbound and westbound directions:
 - 4' inside shoulder
 - 12' vehicle travel lane
 - 12' vehicle travel lane
 - 10' outside shoulder
- Divided roadway with 124' inside median

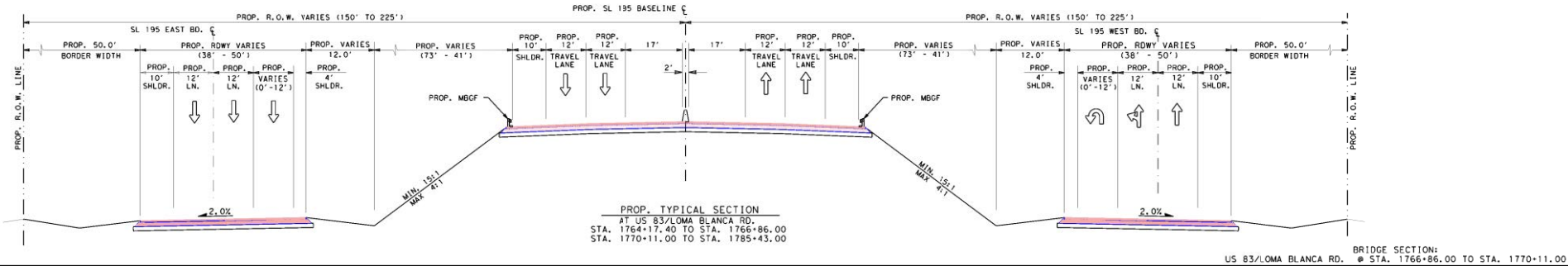
SL 195 Proposed Typical Section

- 300' ROW



SL 195 Proposed Typical Section

■ 450' ROW



- Overpass approach at US 83 / Loma Blanca Rd
- 104' width of overpass typical section
- Eastbound and westbound direction:
 - 17' inside shoulder
 - 12' vehicle travel lane
 - 12' vehicle travel lane
 - 10' outside shoulder
 - And two 38 foot-wide roadbeds access roads

SL 195 Proposed Typical Section

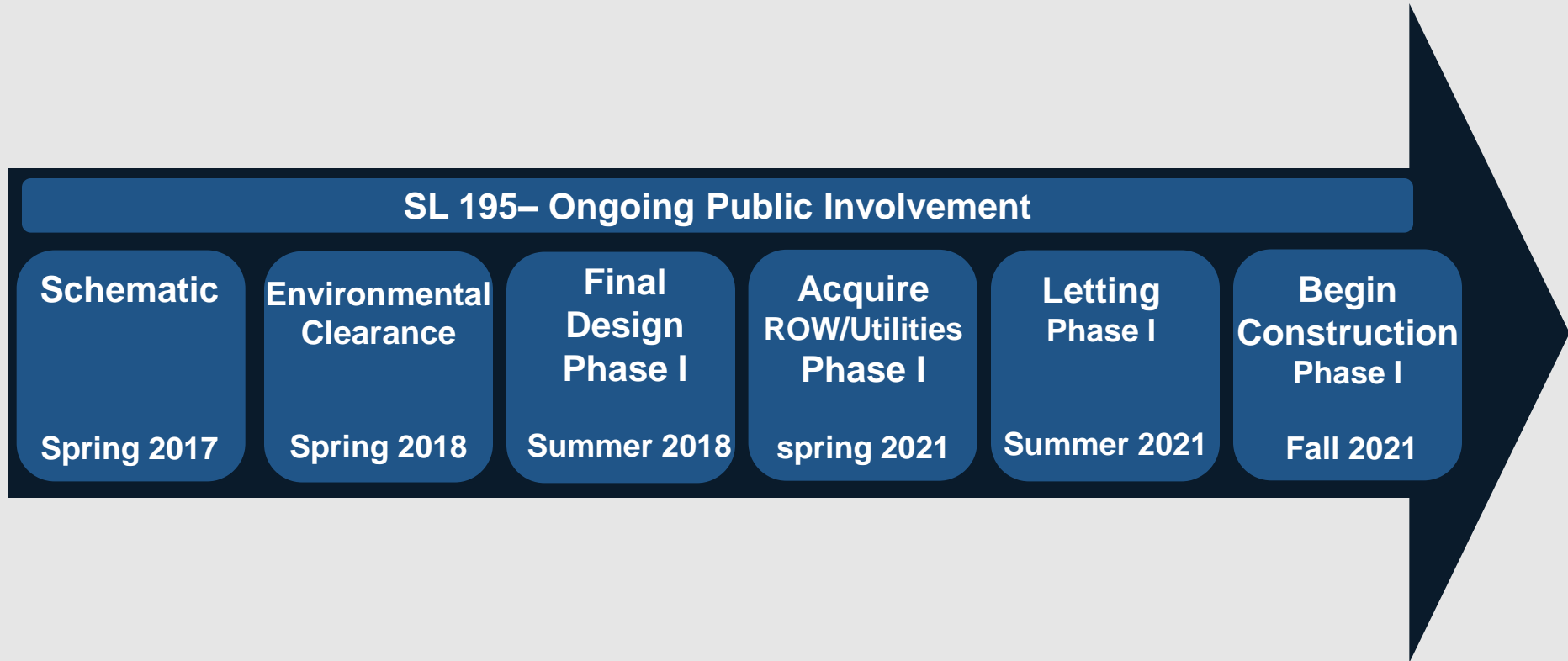
■ 450' ROW



■ Project Scope

- Proposed divided rural highway in a new location within 300' ROW
- Construct overpass at US 83/Loma Blanca intersection
- Construct bridges at FEMA flood zones and 13 other waterways
- Major intersections with turnarounds within 450' ROW
 - FM 3167 , FM 649 and Loma Blanca
- Crossovers at the following intersections:
 - Charco Blanco Rd, Jesse Warren Rd, Alvarez Rd, San Julian Rd and Ebony Ave
- Approximately 99 parcels of ROW will be needed
- One commercial , 11 residential relocations and utilities estimated
- Construction for this project is proposed in 3 phases

Project Schedule*



***This project schedule and dates are preliminary.**



- **Use the microphone**
- **State your name**
- **State your interest in the project**
- **Give your comments on the project**

Provide Your Comments

- Leave written comments at registration table tonight
- Court Reporter (Translator)
- Mail or drop off written comments to:

TxDOT Pharr District
Attn: SL 195
600 W. Interstate 2
Pharr, TX 78577

- Fax comments to (956) 702-6110
- Email comments to Robin.Gelston@txdot.gov
- Comments must be received or postmarked by
Wednesday, March 8, 2017