



TEXAS DEPARTMENT OF TRANSPORTATION



US 281 PUBLIC MEETING
FROM: SH 186/FM 1017
TO: FM 3066





Safety: Mission

ZERO



Safety Never Stops!

Public Meeting Agenda

- **Welcome & Introductions**

Homer Bazan– TxDOT Director of Transportation Planning & Development

- **Technical Overview**

Melba Schaus, P.E. – TxDOT Project Manager

- **Next Steps in Project Development**

Homer Bazan- TxDOT Director of Transportation Planning & Development

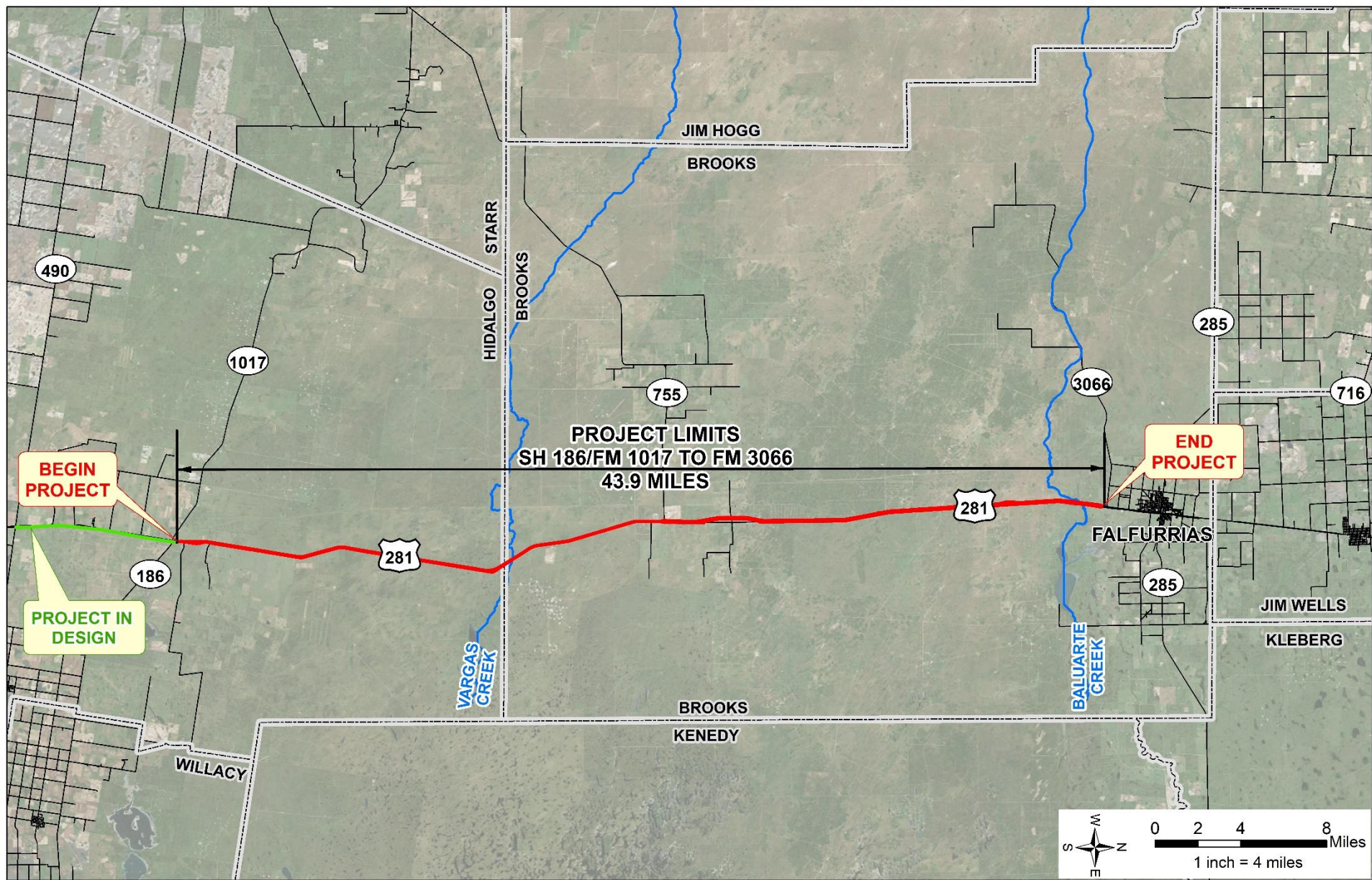
- **Public Comment**

- **Adjournment**

Public Meeting Purpose

- Encourage and maintain effective communication with the public
- Provide project information
- Follow an important step in environmental process
- Receive public input and comments

US 281 Corridor through Hidalgo and Brooks County



Provide Your Comments

- Sign up to speak tonight
- Leave comments at registration table tonight
- Mail or drop off comments:

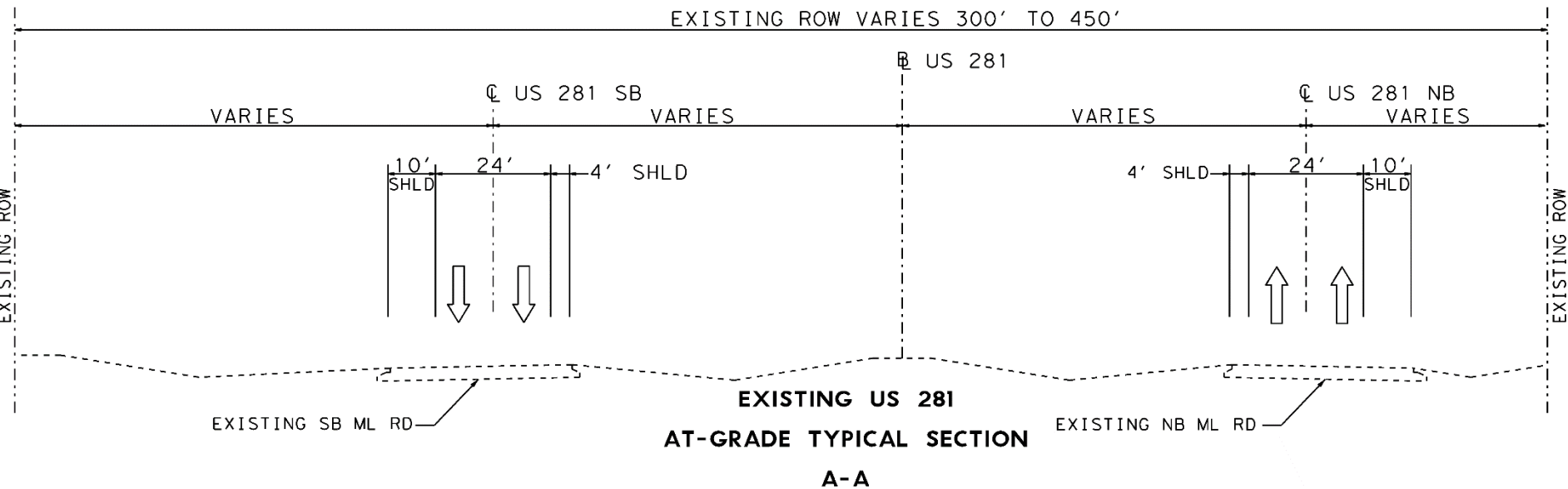
TxDOT Pharr District
600 W. Interstate 2
Pharr, TX 78577

- Fax comments to (956) 702-6110
- Email comments to Robin.Gelston@txdot.gov
- Friday, November 9, 2018 Comment Period Deadline

Project Overview

- SH 186/FM 1017 to FM 3066 (43.9 miles)
- Located in Northern Hidalgo County and Brooks County
- Upgrade to Interstate Standards
- 11 proposed overpasses
- Total Construction Cost = \$500 Million
- Preliminary Utility and ROW Cost = \$9.5 Million

US 281 Existing Typical Sections



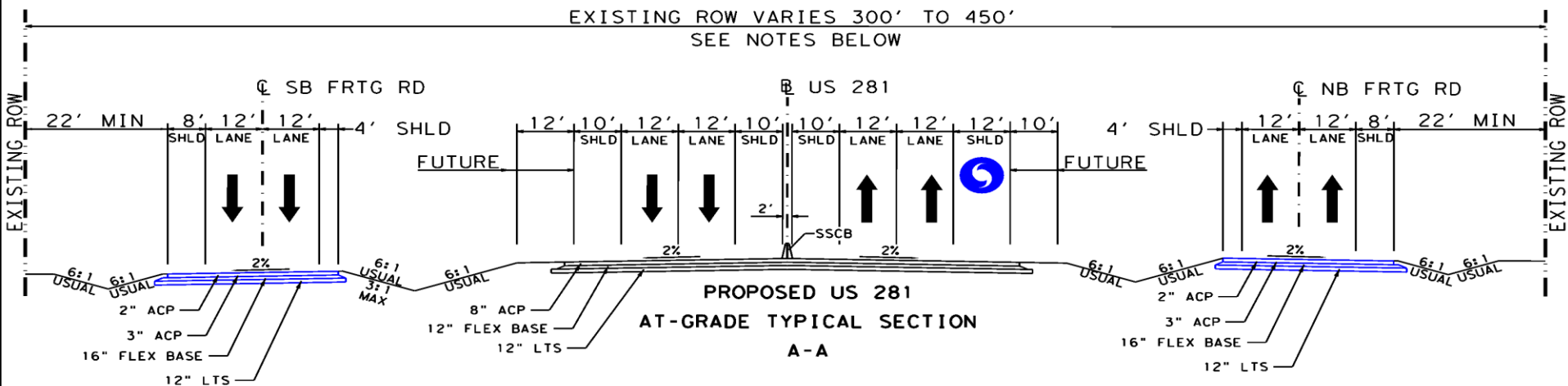
- **Project Need:**

- Existing facility lacks capacity needed for future growth
- Existing facility lacks controlled access
- Reduce risk for accidents

- **Project Purpose:**

- Add capacity
- Improve mobility
- Improve safety

US 281 – Proposed At-Grade Typical Section

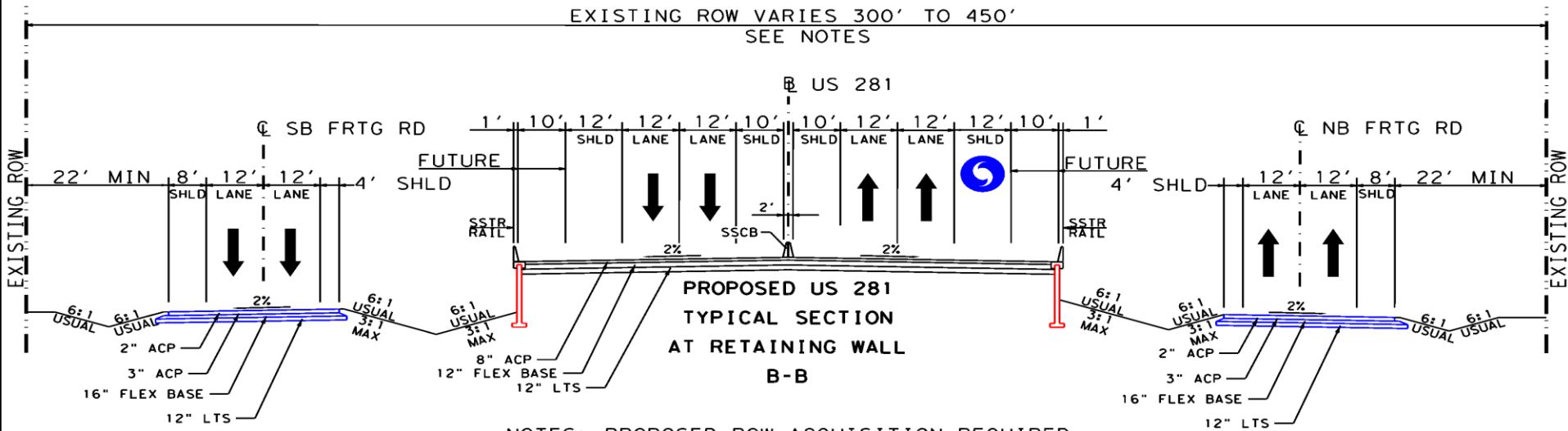


NOTES: PROPOSED ROW ACQUISITION REQUIRED

1. FROM N. OF SH 186 TO EL RUCIO
ADDITIONAL ROW VARIES FROM 0' TO 430'
2. REST AREA - EXIST ROW = 510'
ADDITIONAL ROW VARIES FROM 0' TO 245'



US 281 - Proposed Retaining Walls Typical Section



EXISTING ROW VARIES 300' TO 450'
SEE NOTES

US 281

**PROPOSED US 281
TYPICAL SECTION
AT RETAINING WALL
B-B**

NOTES: PROPOSED ROW ACQUISITION REQUIRED

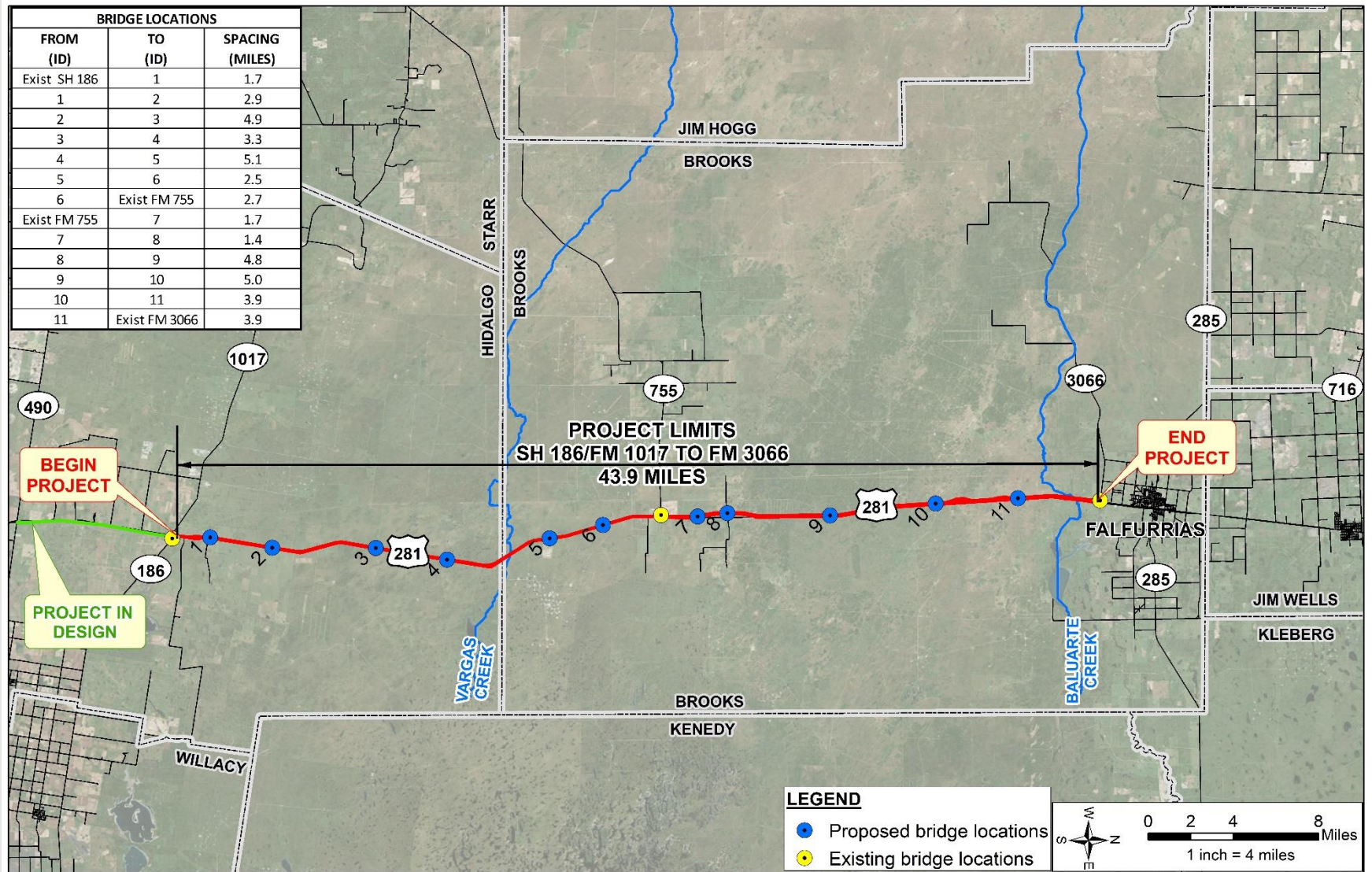
1. FROM N. OF SH 186 TO EL RUCIO
ADDITIONAL ROW VARIES FROM 0' TO 430'
2. REST AREA - EXIST ROW = 510'
ADDITIONAL ROW VARIES FROM 0' TO 245'



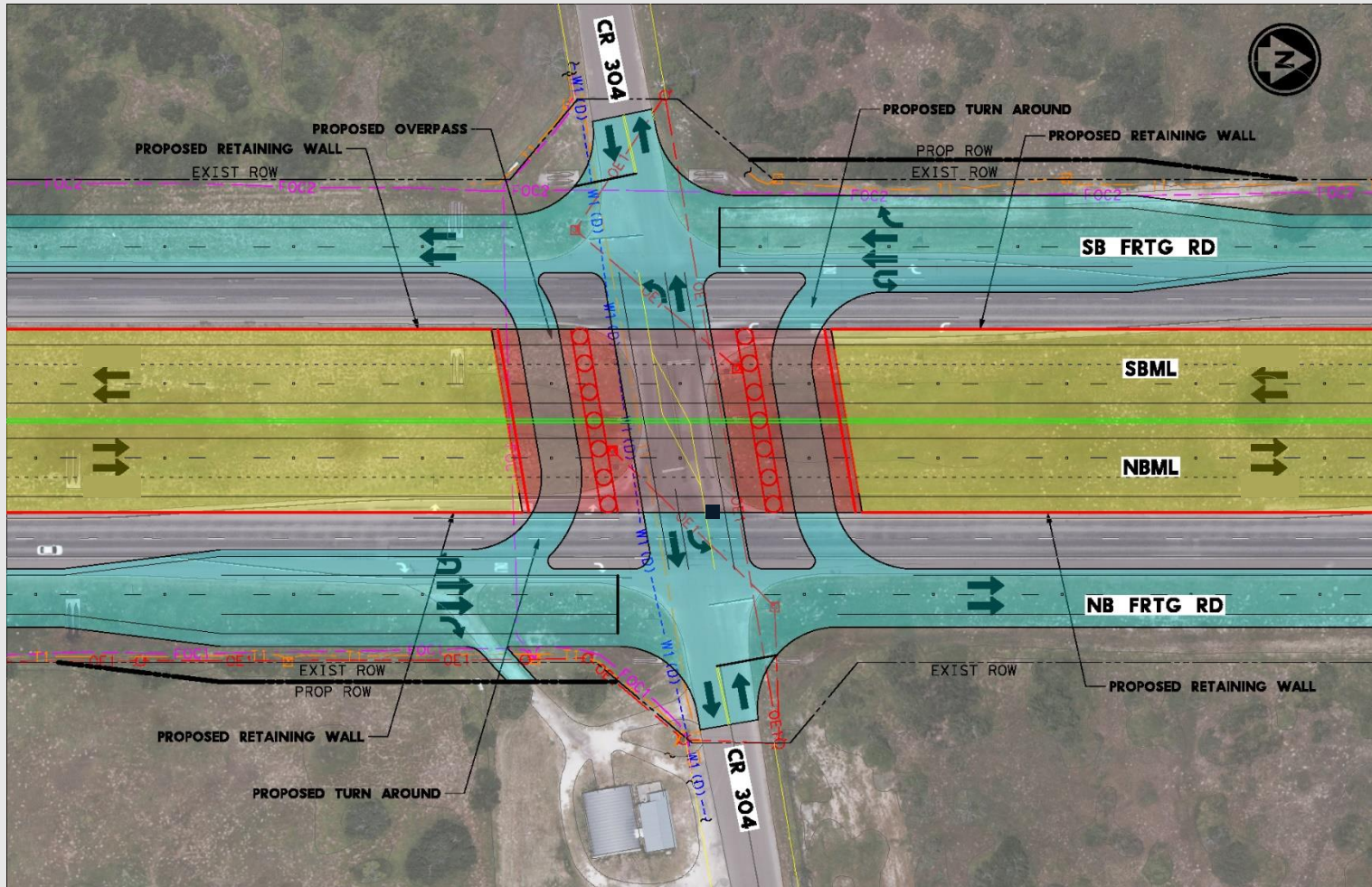
PROJECT SCOPE

- Upgrade existing US 281 to interstate standards as part of future I-69C
- Add Discontinuous Frontage Roads and control access
- Construct 11 Overpasses with a maximum distance of approximately 5 miles apart
- Utilize existing ROW where feasibly possible by providing retaining walls at overpasses.
 - All retaining wall and bridges will be constructed to ultimate width to allow for 3 lanes of traffic each direction
- Other unique features include:
 - Border Patrol Checkpoint
 - Rest Area
 - Weigh Station
 - 4 Wildlife Crossings

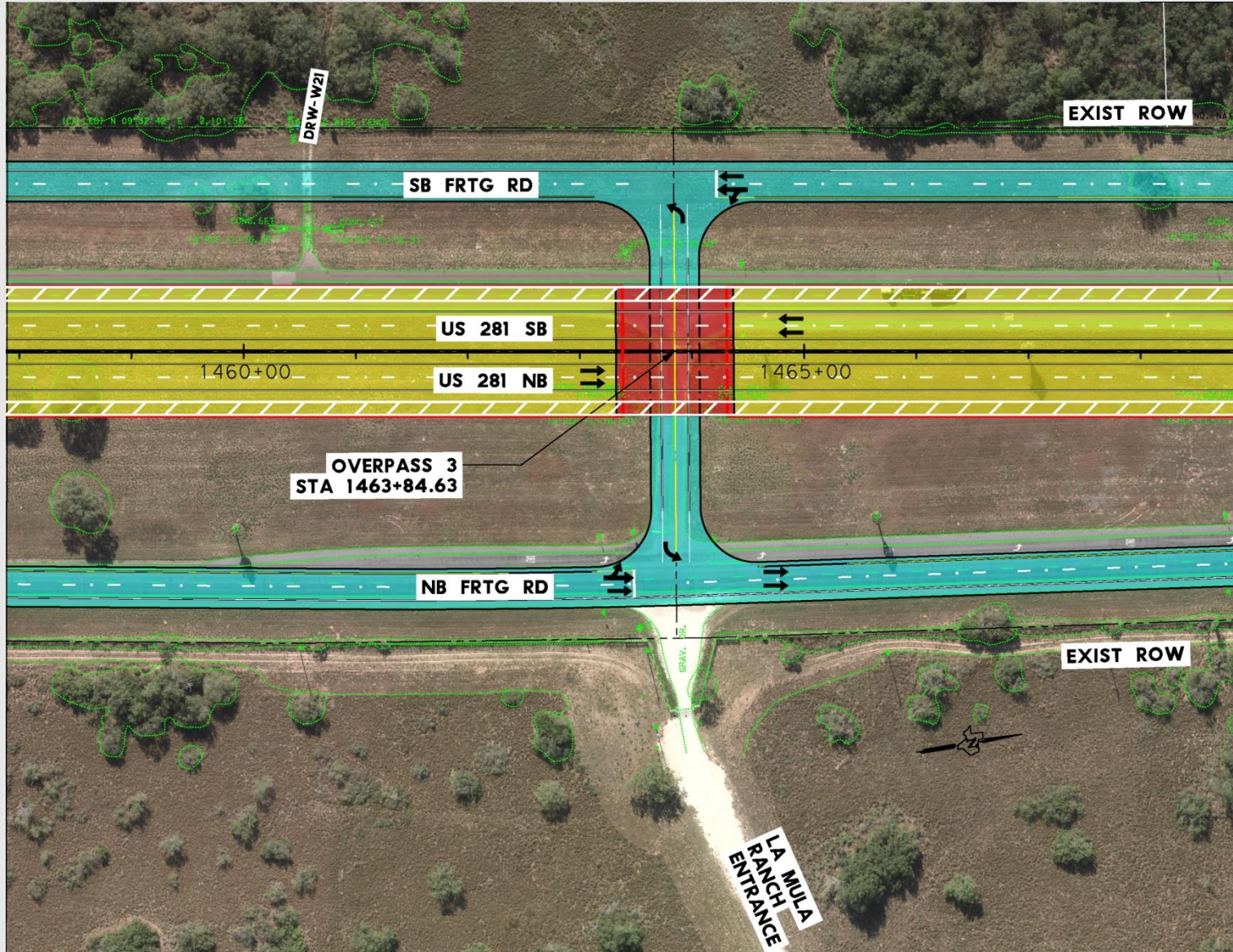
Project Area – SH 186/FM 1017 to FM 3066 (43.9 miles)



US 281 – Proposed 3 Span Bridge Overpass At CR 304



US 281– Proposed Single Span Bridge at Overpass #3



Alternatives Evaluation Matrix

- US 281 – SH 186/FM 1017 to FM 3066

<i>Criteria</i>	<i>Unit of Measurement</i>	No-Build	Alternative 1	Alternative 2
Meets Purpose and Need	Yes/No	No*	Yes	Yes
Proposed New Right-of-Way	Acres		70.11	56.66
Safety				
Addresses High-Speed Left Exits at Rest Area	Yes/No		Yes	No
Improves Rest Area by Including Truck Parking	Yes/No		Yes	No
Human Environment Impacts				
Commercial Structures	Number		1	2
Residential Structures	Number		2	3
"Other" Structures	Number		4	4
NRHP-listed King Ranch Impacts - Potential 4(f)	Yes/No		No	Yes
*The No-Build Alternative did not meet the purpose and need for the project; therefore, it was not carried through the evaluation. However, it will be used as a baseline through the NEPA process for evaluating impacts.				

Project Schedule*

US 281: SH 186/ FM 1017 to FM 3066 – Ongoing Public Involvement

Finalize
Schematic

Fall 2019

Environmental
Clearance

Spring 2020

ROW
Acquisition &
Utility
Adjustments
Spring 2021

Finalize
Design

Summer 2022

Letting

Spring 2023

Begin
Construction

Summer 2023

- This project schedule and dates are preliminary and subject to change. Construction reflects initial phase only. Corridor to be completed in phases.**

The environmental review, consultation, and other actions required by applicable Federal environmental laws for this project are being, or have been, carried-out by TxDOT pursuant to 23 U.S.C. 327 and a Memorandum of Understanding dated December 16, 2014, and executed by FHWA and TxDOT.



- **Use the microphone**
- **State your name & address**
- **State your interest in the project**
- **Give your comments on the project**

Provide Your Comments

- Leave comments at registration table tonight
- Mail or drop off comments:

Pharr District Engineer
TxDOT Pharr District
600 W. Interstate 2
Pharr, TX 78577
- Fax comments to (956) 702-6110
- Email comments to Robin.Gelston@txdot.gov
- Visit www.txdot.gov and search “*US 281 Hidalgo County and Brooks County*” to view information and provide comments
- Friday, November 9, 2018 Comment Period Deadline

***Thank You for Your
Participation!***

