



WELCOME

Proposed US 82 Gap Project

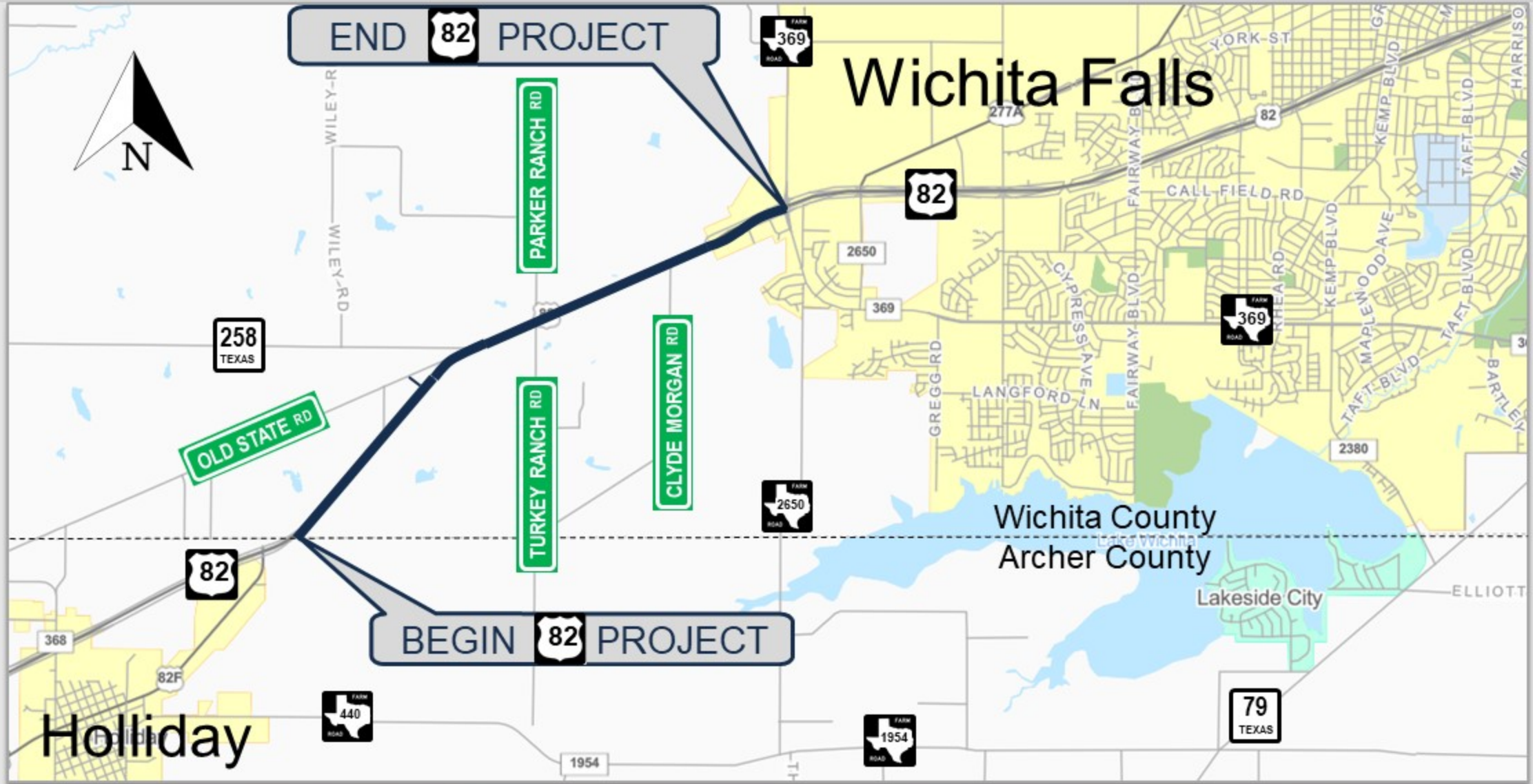
From Wichita/Archer County Line to FM 369

Virtual Public Meeting

September 22 – October 7, 2020



Station 2 (Board 1) – Proposed US 82 Gap Project Location Map



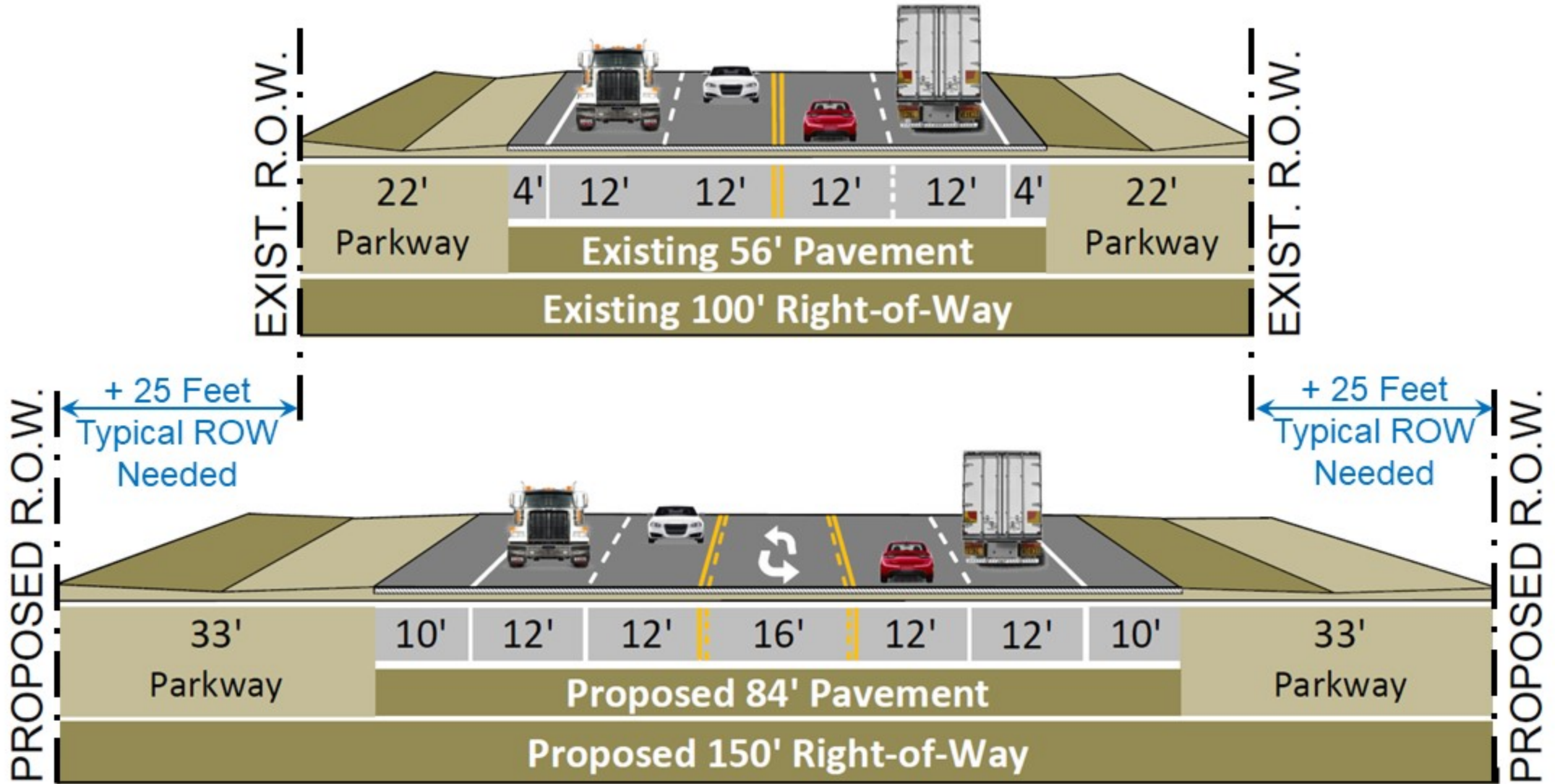


SUMMARY OF COMMENTS FROM FEBRUARY 9, 2017 PUBLIC MEETING:

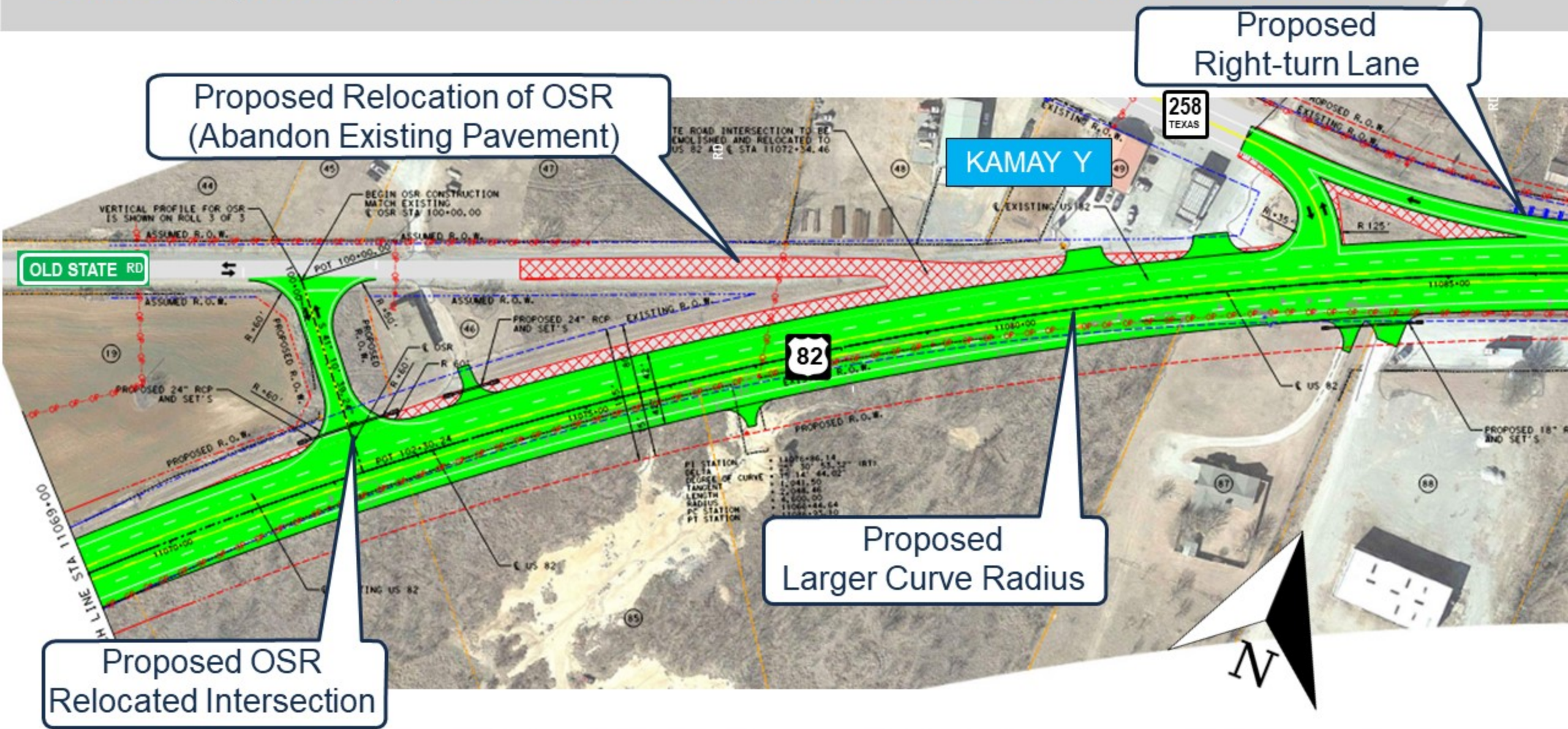
- Options 1A/1B were preferred by 98% of the written responses
- Options 2, 3, 4, 5 were favored by 0.5% of the written responses
- 1.5% of commenters expressed no opinion for a preferred option
- Other comments requested the following improvements to be made along the existing alignment:
 - Intersection improvements at Old State Road at US 82
 - Safety improvements at various locations
 - Yellow blinking traffic signal at the fire department
 - Left-turn lanes and shoulders at high traffic intersections

The image shows two copies of a 'PUBLIC MEETING COMMENT FORM' for proposed improvements to US 82 from the Archer County Line to 7 mile west of FM 309. The forms are dated Thursday, Feb. 9, 2017. The top form contains handwritten feedback: 'I am against putting in a by pass north of Pehu Road. It's not worth the cost. I would fight the decision to put a by pass in if it would be more cost effective to make the road wider about 1 mile long from 12-14th to the Dutton channel. Thank you.' The bottom form contains handwritten feedback: 'We are worried about 2 dangerous intersections. (1) Hwy 82 about 7/8th of 269 or east where Hwy 82 for residents who live on South side of East passed access road. Cars travel 55 mph eastbound. There is a lower speed limit in Hwy about 1/2 mile west of intersection. Cars cannot be seen from my address when they are in that dip. I am ready to pull out. Then they appear going 70 on 80 mph. Solar speed rate signs may help. Flashing yellow light or left turn lane in middle may help. (2) Old State road and Hwy 82 has terrible view from bad angle. A new housing division (Ches Ridge) is opening. Within 5 years (2022) this road will be very busy. Access or right of way intersection to 90 degree will be cheap new. Many families with children are involved.' Both forms include checkboxes for employment and business status, and a privacy notice.

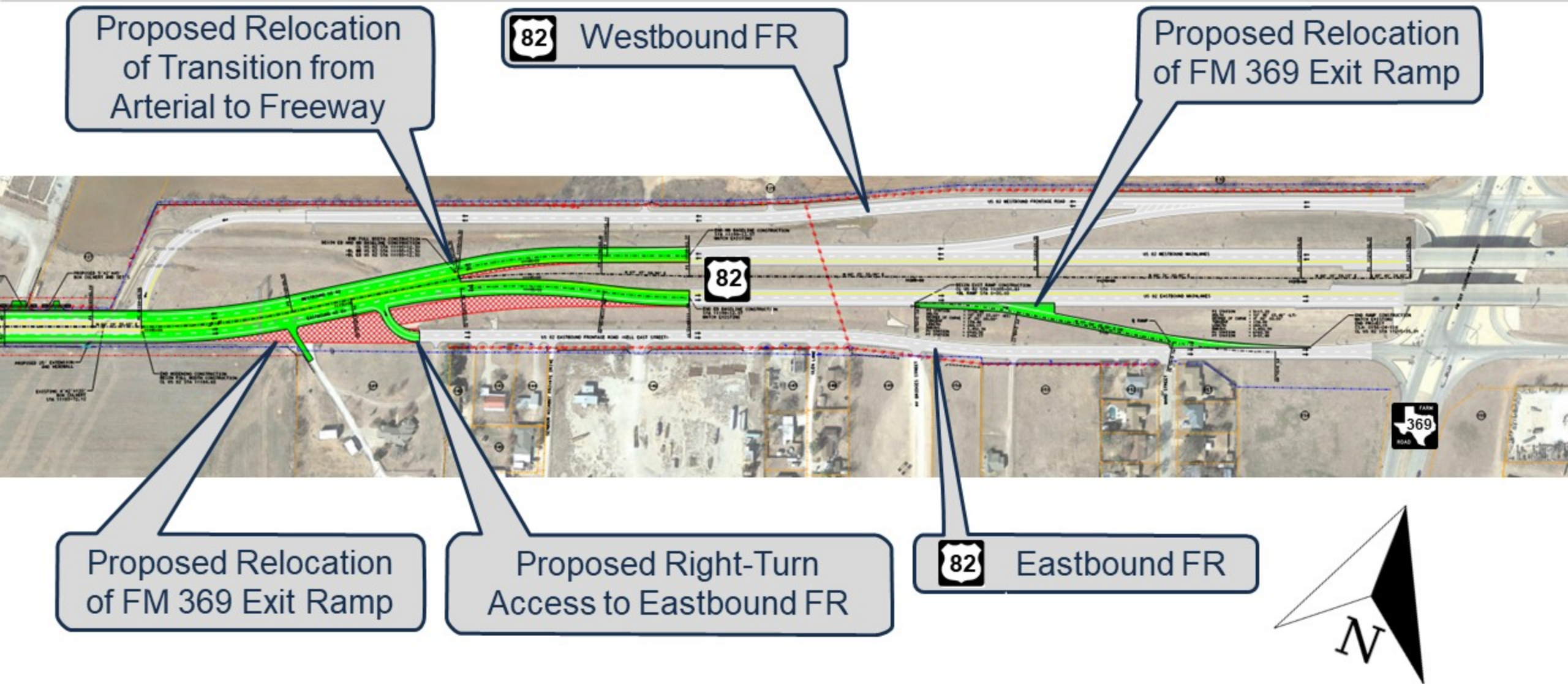
Station 3 (Board 1) - US 82 Existing and Proposed Typical Sections



Station 3 (Board 2) - US 82 at Old State Road and SH 258 Intersections



Station 3 (Board 3) – Proposed East End Transition (Arterial to Freeway)





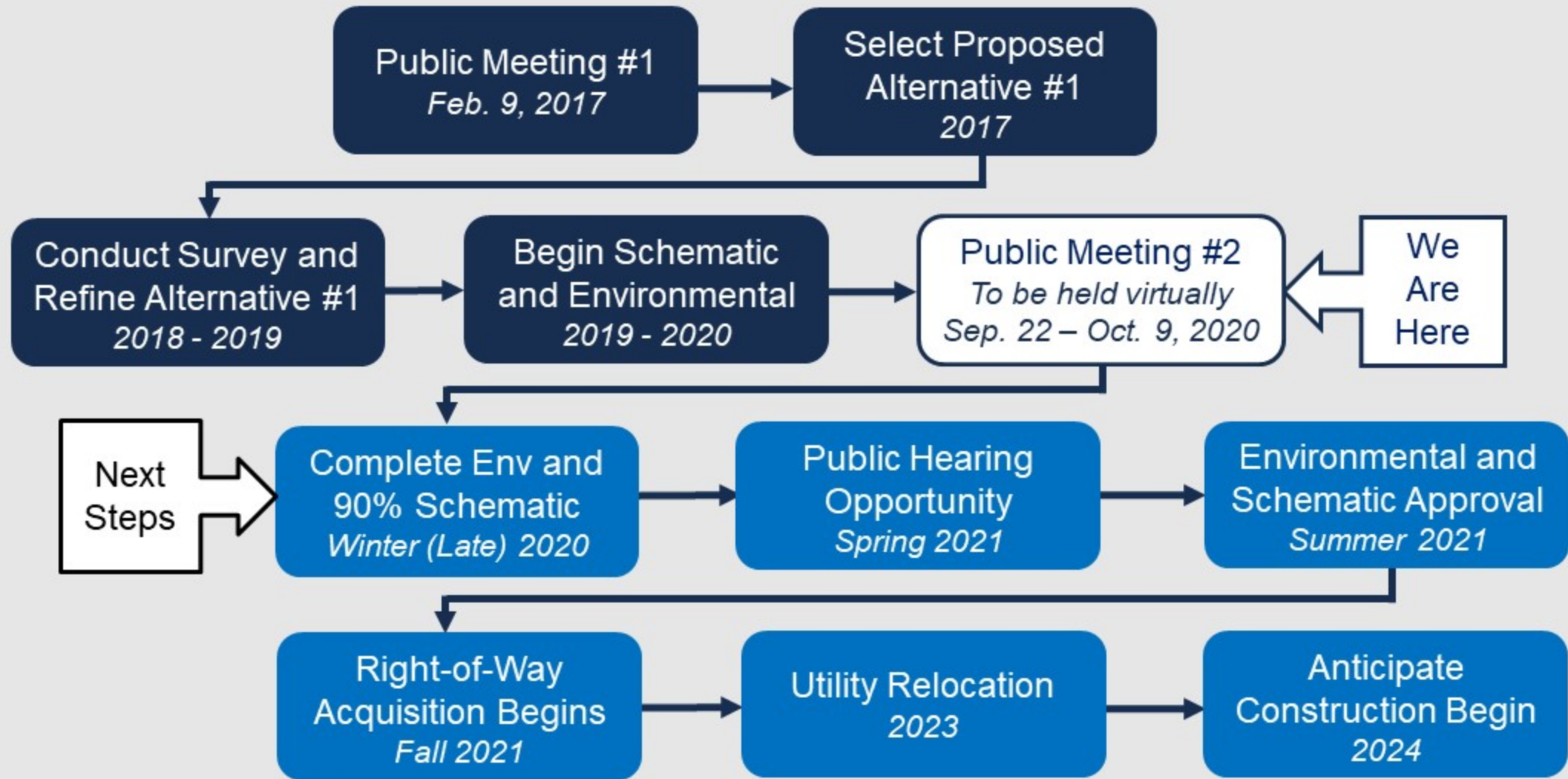
- The environmental process will include evaluation of the build and no-build alternatives and assessments of potential impacts to the natural and human environment, including:
 - Vegetation
 - Threatened and Endangered Species
 - Water Resources
 - Archeological Resources
 - Historic Resources
 - Hazardous Materials
 - Community Impacts
 - Environmental Justice and Limited English Proficiency
 - Access and Travel Patterns
 - Public Involvement



Proposed Construction Sequence:

- Subject to available funding, construction is anticipated to start in 2024
- Expect to construct the road in two phases over the length of the project.
- Construction would commence on half of the road, allowing traffic to continue using the other half of the existing pavement. Bridges and culverts would be extended.
- When the first half is completed, traffic would be switched to the new pavement while the other half of the roadway is constructed.
- Access to all adjacent properties would be maintained at all times during construction.

Station 6 (Board 2) – Tentative Schedule (Subject to Change)





COMMENT CARDS:

Comment forms are available for download on the public meeting website and can be submitted via:

Email: MyProjectsWichitaFalls@TxDOT.gov

Mail: TxDOT Wichita Falls District
US 82 Gap Project
1601 Southwest Pkwy
Wichita Falls, TX 76302

CONTACT INFORMATION:

If you have any questions or need additional information, you may contact:

Kyle Poirot, P.E.

Transportation Engineer

TxDOT Wichita Falls District

Phone: (940) 720-7776

Email: Kyle.Poirot@TxDOT.gov