



# Welcome

## FM 102

From I-10 to 0.66 miles south of FM 949  
CSJ: 0027-02-034

### Public Meeting

Thursday, Jan. 9, 2025

Available online through Friday, Jan. 24, 2025

#### Why am I here?

- Learn about the FM 102 project
- Provide comments on the proposed project

As provided for by 23 Code of Federal Regulations (CFR) 450.212, 23 CFR 450.318, and Appendix A to 23 CFR Part 450, the results of this PEL study may be incorporated into or used as part of the review of one or more projects under the National Environmental Policy Act, otherwise known as NEPA, which is carried-out by TxDOT pursuant to 23 United States Code (USC) 327 and a Memorandum of Understanding dated December 9, 2019, and executed by the Federal Highway Administration (FHWA) and TxDOT.

#### Slide 1 – Welcome

Welcome to the Texas Department of Transportation’s prerecorded virtual public meeting presentation. We appreciate your interest in the project and welcome each of you. Please note that you may pause this presentation at any point to allow more time to view the slides or navigate forward or backward as needed.

Your input on the proposed improvements is valuable and will benefit the community and shape the final project recommendations. The virtual public materials and project information can be found at [www.txdot.gov](http://www.txdot.gov) by typing the project keyword “FM 102 from I-10 to 0.66 miles south of FM 949” in the search box in the upper right-hand corner. After the project information is presented, we would appreciate your feedback.

**HELP**  
**#EndTheStreakTX**  
End the streak of daily deaths on Texas roadways.

### Slide 2 – Safety Moment

Before we begin, we would like to express our continued concern for safety by sharing TxDOT’s “End the Streak” campaign. November 7, 2000, was the last deathless day on roadways in Texas. Texans can play a major role in ending fatal crashes with a few simple driving habits: wear seatbelts, drive the speed limit, put away the phone and other distractions and never drive under the influence of alcohol or drugs. So please do your part and share this message with your friends and family.

# Table of Contents



- 04 | Public Meeting Purpose
- 05 | Project Location
- 10 | Environmental Process
- 12 | Right of Way (ROW)
- 13 | Project Development & Schedule
- 14 | How to Comment

## Slide 3 – Table of Contents

We will cover several topics regarding the FM 102 project throughout this presentation, including: the public meeting purpose, the project background, the environmental and right-of-way processes, the anticipated schedule and how to provide comments.

# Public Meeting Purpose



TxDOT holds public meetings for four purposes:

- Inform the public of the planning status for the project and present recommendations based on studies to date.
- Describe the project so the public can determine the project's potential to affect their lives and property.
- Provide the public with an opportunity to express their views in a stage of the planning process before location and design decisions are finalized.
- And finally, to develop a record of public views and participation to accompany recommendations for subsequent decisions.

## Stay Informed

Visit the project website to stay connected on updates to the FM 102 project at [www.txdot.gov](http://www.txdot.gov), keyword search "FM 102 from I-10 to 0.66 miles south of FM 949."

---

If you have any general questions regarding the proposed project, the virtual meeting or the in-person option, please contact Grant Tisdell-Blanch, Project Manager, at 361-293-4328 or email at [grant.tisdellblanch@txdot.gov](mailto:grant.tisdellblanch@txdot.gov).

## Slide 4 – Public Meeting Purpose

TxDOT holds public meetings for four essential purposes:

- Inform the public of the planning status for the project and present recommendations based on studies to date.
- Describe the project so the public can determine the project's potential to affect their lives and property.
- Provide the public with an opportunity to express their views during the planning process before location and design decisions are finalized.
- And finally, to develop a record of public views and participation to accompany recommendations for subsequent decisions.

If you have any questions regarding the FM 102 project, you may reach out to the project team as indicated on the slide.

# Project Background - Location



**Project Limits:**

FM 102 from I-10 to 0.66 miles south of FM 949

**Length:**

6.4 miles

**Location:** Colorado County



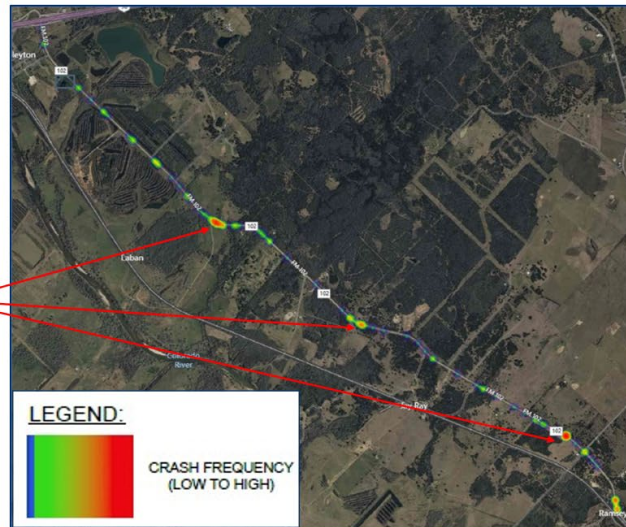
Slide 5 – Project Location

TxDOT is proposing to widen and realign a 6.4-mile section of FM 102 from I-10 to 0.66 miles south of FM 949 in Colorado County, Texas.

# Project Background - Heat Map



Most of the crashes along the FM 102 corridor over the last 10 years have occurred at the curves.



Source: TxDOT Crash Records Information System (CRIS), 2013-2022

## Slide 6: Crash Heat Map

Most of the crashes along the corridor over the last 10 years have occurred at the curves, indicating the existing curve geometry may be a contributing factor to crashes.

## NEED



Enhance safety

## PURPOSE



Bring the roadway into compliance with current design standards

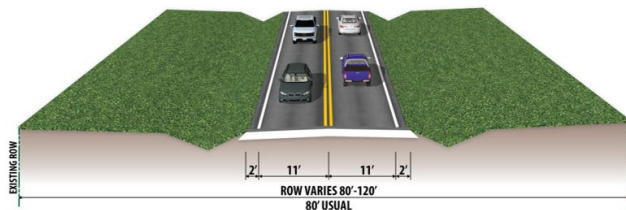
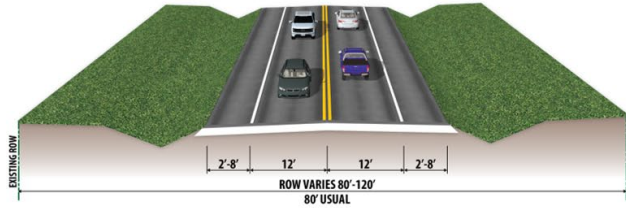
### Slide 7 – Project Need and Purpose

The project is needed because the existing roadway does not meet current design standards. The purpose of the project is to bring this stretch of FM 102 into compliance with current design standards and enhance safety by realigning the curvature of the roadway.

## Project Background – Existing Typical Section



- One 11- to 12-foot-wide travel lane in each direction
- 2- to 8-foot-wide shoulders
- Right-of-way (ROW) widths from 80 to 120 feet
- Roadway mostly at-grade and crosses several water bodies and floodplains
- Lacks a median, curb and gutters, and sidewalks



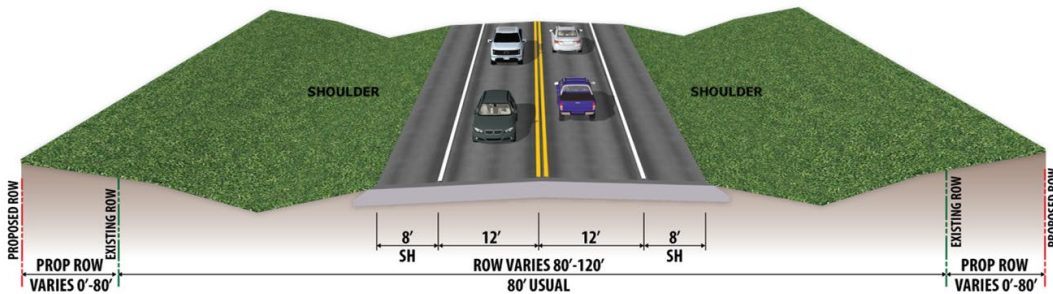
### Slide 8 - Existing Typical Section

The existing roadway on FM 102 consists of one 11- to 12-foot-wide travel lane in each direction with varying shoulder widths of 2 to 8 feet. The right-of-way widths vary from 80 – 120 feet. The corridor is mostly at-grade and crosses several water bodies and floodplains. The road does not have a median, curb and gutter, or sidewalks.

## Project Background – Proposed Typical Section



- Maintain the existing two-lane footprint
- Widen the shoulders and rehabilitate existing curves
- Add a slope ditch along both sides of FM 102 to accommodate drainage
- Replace and improve culverts



### Slide 9 - Proposed Typical Section

The proposed project would enhance safety and bring the roadway into compliance with current design standards. The corridor would maintain its existing two-lane footprint while widening the shoulders and rehabilitating existing curves. A typical slope ditch is proposed along both sides of FM 102 to accommodate drainage, along with various culvert replacements and improvements.

## National Environmental Policy Act (NEPA)



These are some of the social, economic, and environmental resources being studied:



Prior to December 16, 2014, the Federal Highway Administration, or FHWA, reviewed and approved documents prepared under the National Environmental Policy Act, known as NEPA; however, on December 16, 2014, TxDOT assumed responsibility from FHWA through a Memorandum of Understanding to review and approve certain assigned NEPA environmental documents. This Memorandum of Understanding between TxDOT and FHWA was updated on December 9, 2019.

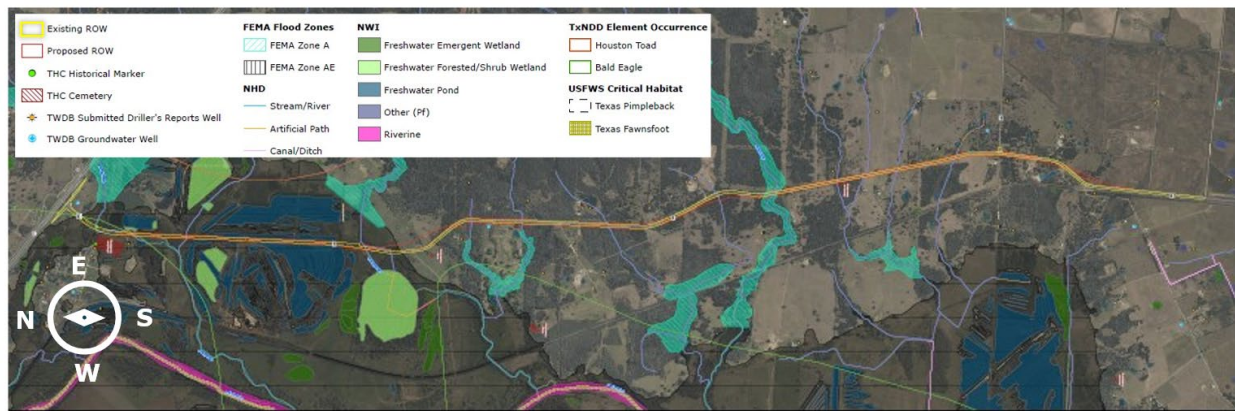
### Slide 10 – Environmental Process

The slide shows some of the environmental considerations that are included in the study, consistent with the National Environmental Policy Act, or NEPA. NEPA is a federal law that establishes procedures that must be followed when developing projects. NEPA guidance ensures consideration of the potential impacts on the social, economic, and physical environments and determines measures to avoid, minimize, and mitigate these potential impacts. It also ensures that project outcomes are improved through public outreach efforts, such as this public meeting where you can share your input for consideration by the project team and inclusion in the official public meeting record.

# Environmental Constraints



TxDOT is analyzing the preliminary environmental constraints within the project area.



FM 102

Full map available at [TxDOT.gov](http://TxDOT.gov) keyword search "FM 102 from I-10 to 0.66 miles south of FM 949"

11

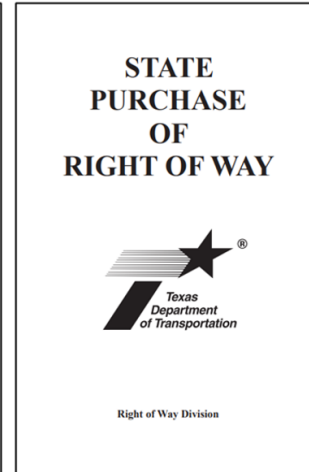
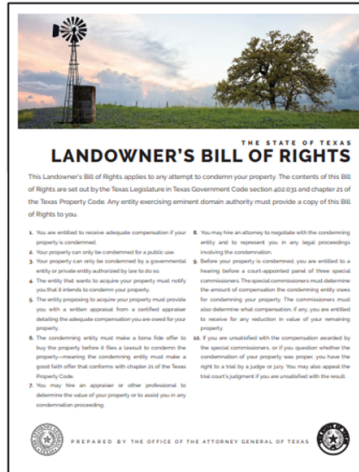
## Slide 11 – Environmental Constraints

TxDOT is analyzing the preliminary environmental constraints within the project area. This exhibit shows some of the environmental features present. As the proposed project is further refined, the environmental process will continue along with in-depth analyses and field studies to assess potential impacts. To view the full environmental constraints map, please visit the project website.

# Right of Way (ROW)



The proposed project would, subject to final design considerations, require an additional **48.58 acres** of right of way and displace one residential structure and no commercial structures. Relocation assistance is available for any displaced property owner. Additional right-of-way information is provided on the project website.



## Slide 12 – Right of Way

The proposed project would, subject to final design considerations, require an additional 48.58 acres of right-of-way and displace one residential structure and no commercial structures. Relocation assistance is available for any displaced property owners.

All right-of-way acquisition would be completed in accordance with the Uniform Relocation Assistance and Real Property Acquisition Policies Act of 1970, as amended. Detailed information to inform displaced persons of their rights is provided on the project website.

# Project Development



## Anticipated Project Timeline



**\*This timeline is approximate, subject to change, and contingent upon funding**

Advancement to right-of-way acquisition, utility adjustments, final design, and construction is contingent upon the results of the environmental process and funding availability.

### Slide 13 – Project Development

The anticipated schedule for the FM 102 project has tentative dates for when specific work for the project will start or be completed. After the public meeting, the environmental study will be completed. Any right-of-way that may be needed will be acquired prior to the start of construction, which is pending funding. All dates are subject to change.

# How to comment



## Comment Form

Submit a comment form online or in-person. You can access the online comment form by visiting [www.txdot.gov](http://www.txdot.gov), keyword search "FM 102 from I-10 to 0.66 miles south of FM 949."



## Mail

Submit a comment by mail to:  
TXDOT Yoakum District Office  
c/o Grant Tisdell-Blanch,  
Project Manager  
403 Huck St.,  
Yoakum, TX 77995

**Please submit or  
postmark  
comments by:  
Friday,  
Jan. 24, 2025**



## E-mail

Submit a comment to: [grant.tisdellblanch@txdot.gov](mailto:grant.tisdellblanch@txdot.gov)

**Visit [www.TxDOT.gov](http://www.TxDOT.gov) and keyword search "FM 102 from I-10 to 0.66 miles south of FM 949" for more information and to submit a comment**

## Slide 14 – How to Comment

Comments will be accepted in a variety of ways, including filling out a comment card in person at the public meeting, email or online.

Comments must be received or postmarked by Friday, Jan. 24, 2025, to be included in the official public meeting record. Responses to comments received will be posted on the public meeting website once they are prepared.

# Thank you for joining us!

## Slide 15 – Thank you

We appreciate your participation and interest in the proposed improvements to FM 102 from I-10 to 0.66 miles south of FM 949. Your questions, comments and concerns will receive careful consideration. Thank you.